

Mean endpoints

Force field without VFB (FFnv)

Force field with VFB (FFv)

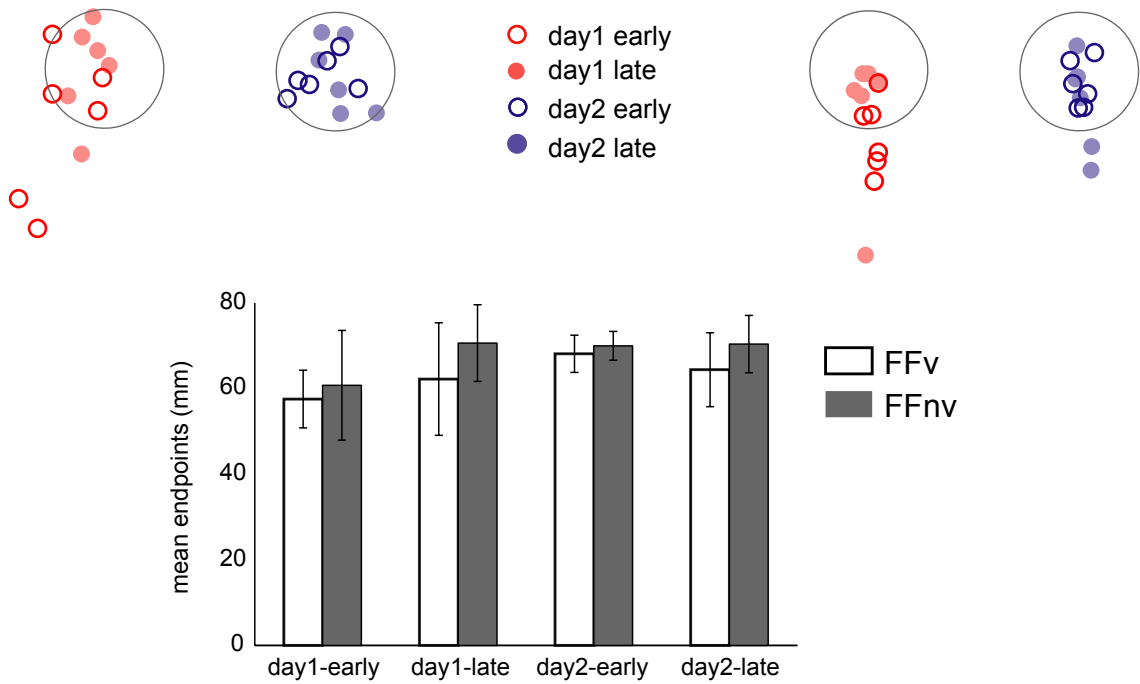


Figure S1. Mean movement endpoints of each of the subjects in force field without visual feedback (FFnv,left) and with (FFv,right). Each circle is a subject's mean final hand position across the early (1:40) and late (181:220) trials of both days. Bar plot of the mean endpoints across all subjects in each group during the early and late phases of day1 and day2 training. Vertical lines are ± 1 standard error of the mean.