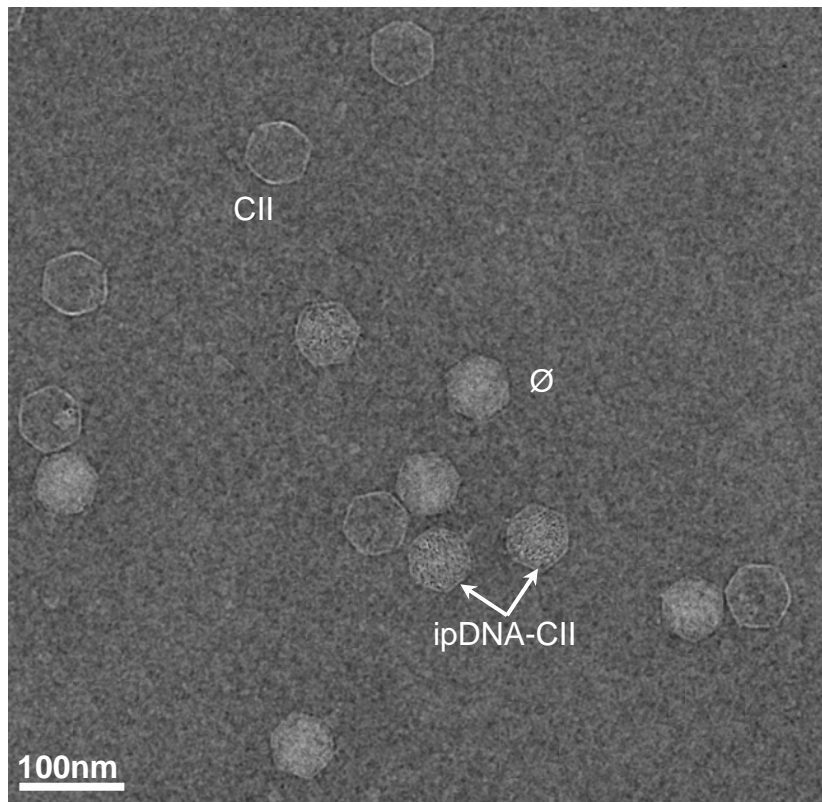
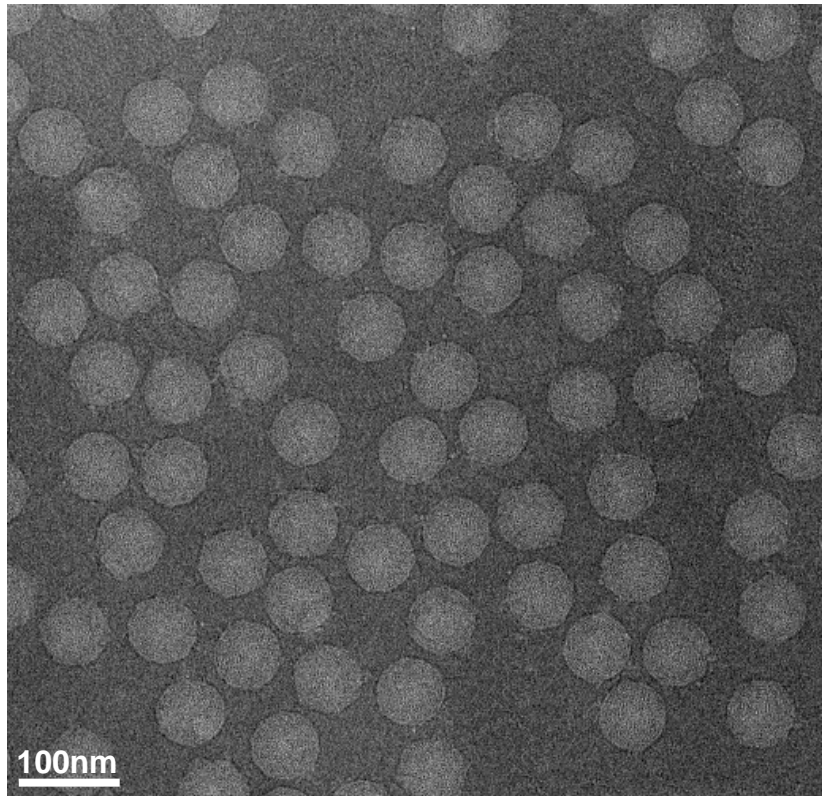


a



b



**Supplementary Figure 2.** Cryo-electron microscopy of fields of T3 22 kb ipDNA-capsid and phage fractions. Fields are shown of (a) an 22 kb ipDNA-capsid fraction at 2.7  $\mu\text{m}$  defocus, and (b) a T3 phage fraction at 1.8  $\mu\text{m}$  defocus. The length of the bar is 100 nm. The labels in (a) mark particles representative of the different types of capsids.