

Supporting Information

Barabutis and Schally 10.1073/pnas.0811209106

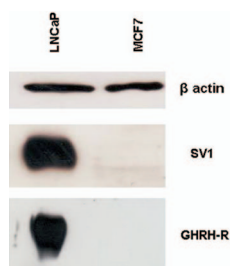


Fig. S1. Western blot analysis of expression of SV1 and GHRH-R in LNCaP prostate cancer cells. MCF-7 breast cancer cells were used as negative control.

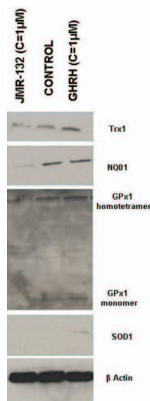


Fig. S2. Western blot analysis of expression of the antioxidant enzymes Trx1, NQO1, GPx1, and SOD1 in LNCaP prostate cancer cells after 72-h exposure to GHRH antagonist JMR-132 and GHRH(1-29)NH₂; $n = 2$.