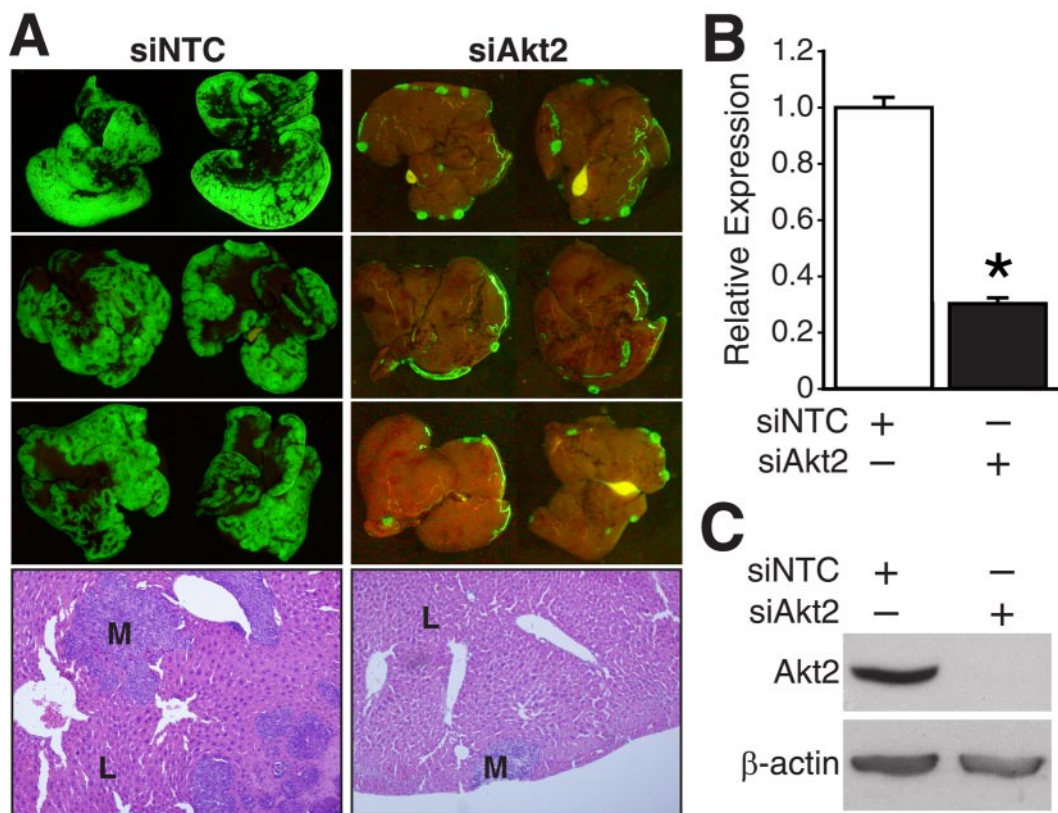


# Supporting Information

Rychahou *et al.* 10.1073/pnas.0810715105



**Fig. S1.** (A) KM20 cells were transfected with single NTC or Akt2 siRNA duplex *in vitro* and inoculated intrasplenically 56 hours later. Animals were monitored individually for metastatic tumor growth and killed 30 days after intrasplenic injection. Representative photographs of the diaphragmal and visceral liver surfaces are shown. L, normal liver; M, metastasis. (B, C) KM20 cells were transfected with single-sequence NTC or Akt2 siRNA. After 56 hours of incubation, specific knockdown was confirmed by qRT-PCR or Western blot analysis, respectively.  $\beta$ -actin serves as a loading control.



