

Supporting Information

Abu Bakar *et al.* 10.1073/pnas.0809073106

Table S1. Properties of 24 crossovers in CEPH pedigrees leading to reassortment of β -defensin repeat units

Crossover child	Parental origin	β -Defensin copy number		Distal flanking genetic marker	Assembly coordinate	Proximal flanking genetic marker	Assembly coordinate	Copy number change?
		Distal	Proximal					
10204	M	1	1	AFMb294yg5/(AC)n	11515050	AFM320yf1/(AC)n	12786453	No
10206	M	1	0	afm304ze9/(AC)n	10918926	rs2898254	10929940	No
10207	P	2	1	rs751009	6741958	rs895252	8997910	Yes
10209	M	1	0	afm304ze9/(AC)n	10918926	rs2898254	10929940	No
10214	P	1	2	rs751009	6741958	rs895252	8997910	Yes
10215	M	1	1	rs2898254	10929940	AFM144zb2/(AC)n	11317121	No
10216	M	1	1	AFMa216zb1/(AC)n	10177958	afm304ze9/(AC)n	10918926	No
10406	M	1	1	cos140B11/pcr	9781807	rs2898254	10929940	No
10407	M	1	0	rs2001329	11024269	rs2203837	12864210	No
133205	M	1	1	AFMa216zb1/(AC)n	10177958	afm304ze9/(AC)n	10918926	No
133306	M	1	2	rs2001329	11024269	rs2203837	12864210	Yes
133404	P	1	1	cos140B11/pcr	9781807	afm304ze9/(AC)n	10918926	No
134106	M	1	1	afm198wd2/(AC)n	6504084	rs433960	8805729	No
134109	M	1	1	afm198wd2/(AC)n	6504084	rs433960	8805729	No
135005	M	1	2	cos140B11/pcr	9781807	afm304ze9/(AC)n	10918926	No
135006	M	1	1	rs895252	8997910	cos140B11/pcr	9781807	No
135008	M	1	1	rs895252	8997910	cos140B11/pcr	9781807	No
135009	M	1	2	rs2001329	11024269	GATA23D06/pcr	12880230	No
136210	M	1	0	afm304ze9/(AC)n	10918926	AFMa216zb1/(AC)n	10177958	No
136211	M	1	0	afm304ze9/(AC)n	10918926	AFMa216zb1/(AC)n	10177958	No
136217	M	1	0	AFMa216zb1/(AC)n	10177958	rs433960	8805729	No
1329206	M	(ambiguous)		rs2898254	10929940	rs939557	12814009	No
1329404	M	1	1	rs751009	6741958	rs2898254	10929940	No
1329407	P	1	1	rs881362	6686304	rs433960	8805729	No

The numbers of copies of β -defensin at the proximal and distal sites are shown for the recombinant haplotype. The final column indicates events leading to a recombinant haplotype with a copy number not found on either parental haplotype. Maternal haplotypes in family 1362 are in the inverted orientation, and distal and proximal markers are shown in the corresponding order.

Other Supporting Information Files

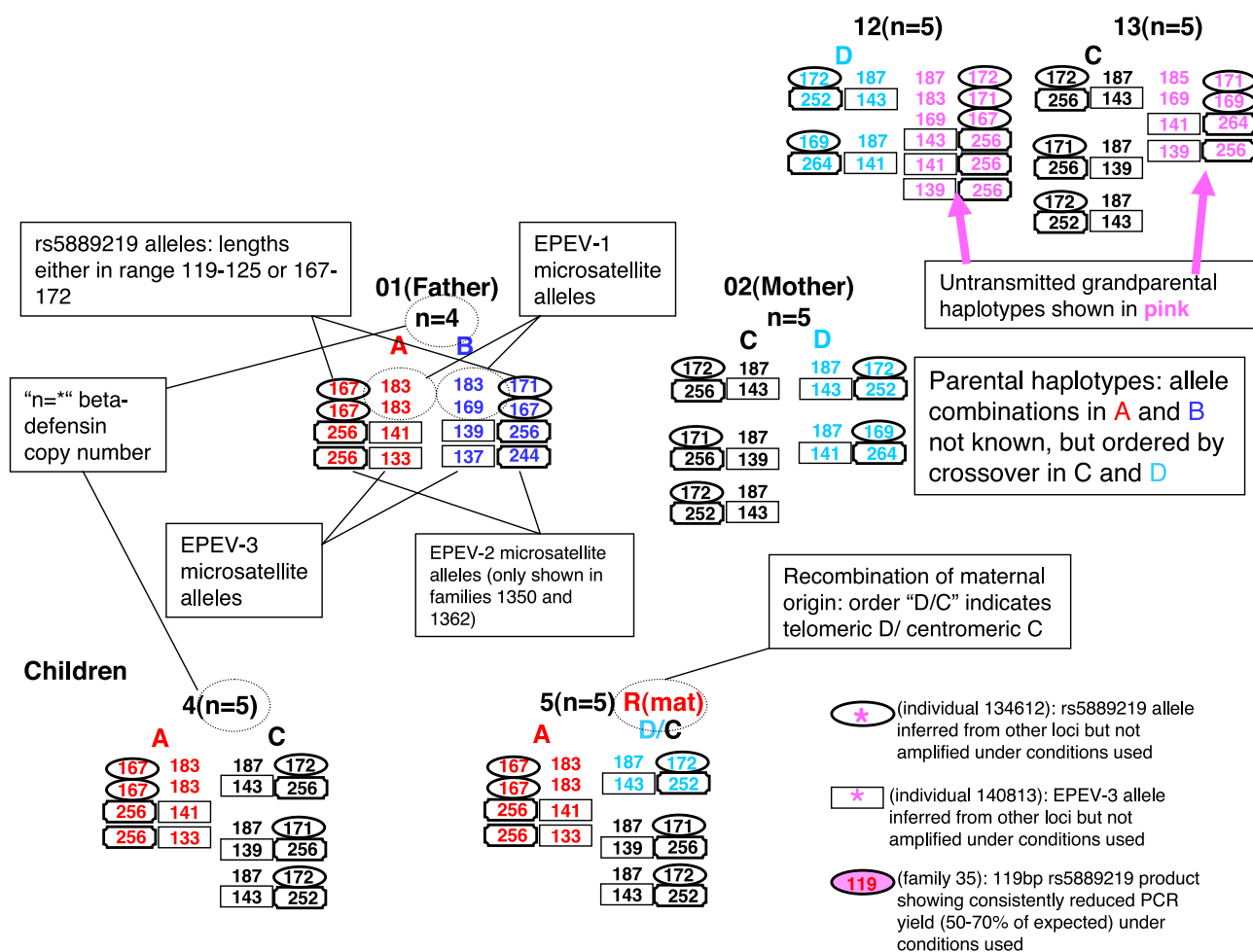


Fig. S1. Diagrammatic summaries of CEPH family segregation for copy number and multiallelic markers in the β -defensin cluster. Pages 3–28 show the segregation of all markers typed in pedigrees, with one page per family; the explanatory key to the symbols used is on the second page.

[Fig. S1 \(PDF\)](#)

[Dataset S1 \(XLS\)](#)