

Fig. S7. Example percent identity and length of alignment quartile plots

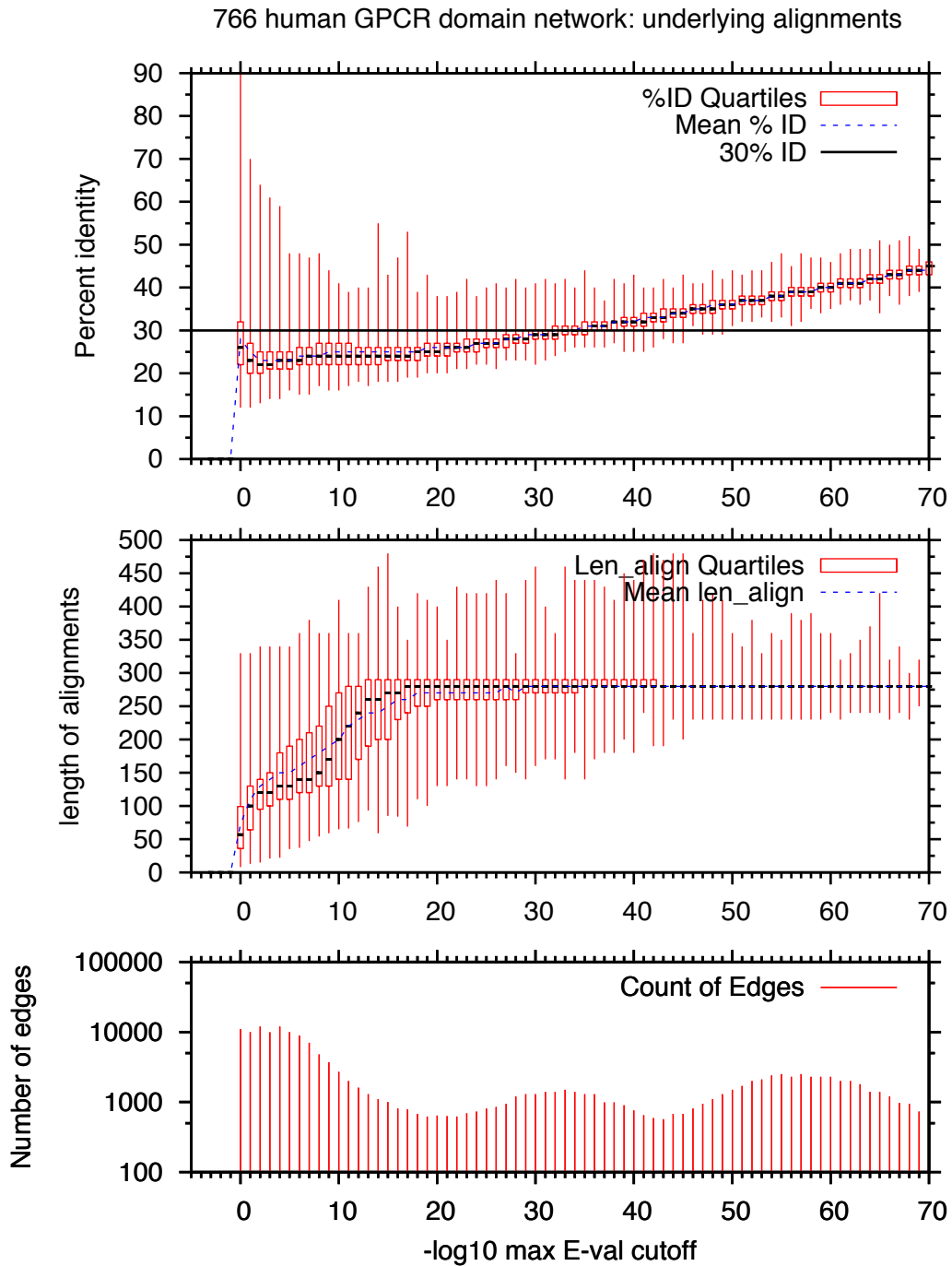


Fig. S7. This series of plots describes the alignments at different E-values associated with the 766-sequence GPCR suprafamily that is depicted using a 1×10^{-2} E-value threshold in Fig. 4B. Observing the range of percent identities and alignment lengths associated with each E-value range is a key step in deciding which thresholded networks to examine in more detail. For example, perhaps only networks based on alignments that cover at least the length of the domain in common and have greater than 30% sequence identity are of interest.