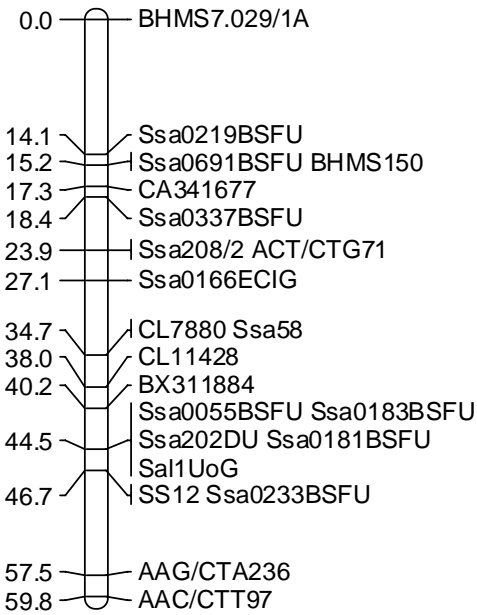
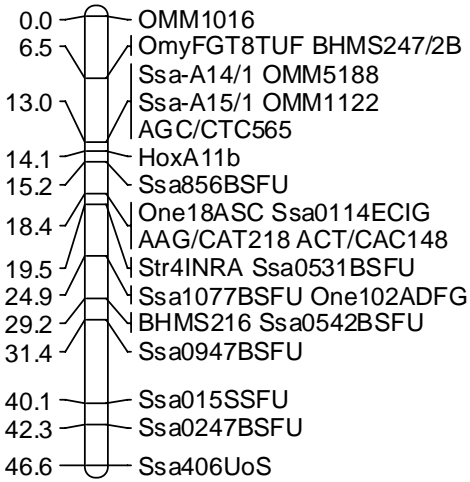
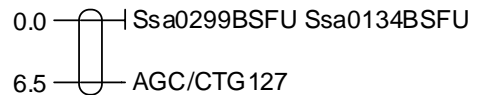
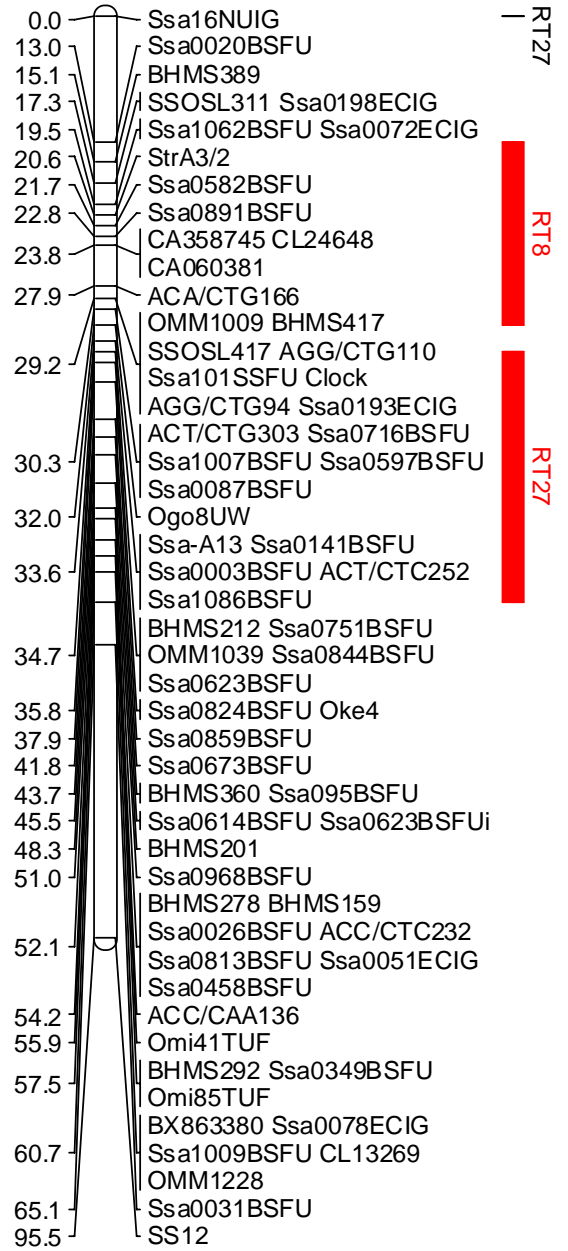


Supplementary Figure 2: Atlantic salmon merged female genetic map depicting all linkage groups numbered in sequence. The 'f' suffix following the linkage group name indicates it is a female map. Map distances are indicated as observed recombination distances (Θ) where 1% recombination = 1 cM. Homologous regions within Atlantic salmon to their respective rainbow trout linkage groups are indicated to the right of each linkage group. Atlantic salmon chromosomes ranked according to size (Phillips et al. unpublished) are indicated below each linkage group designation.

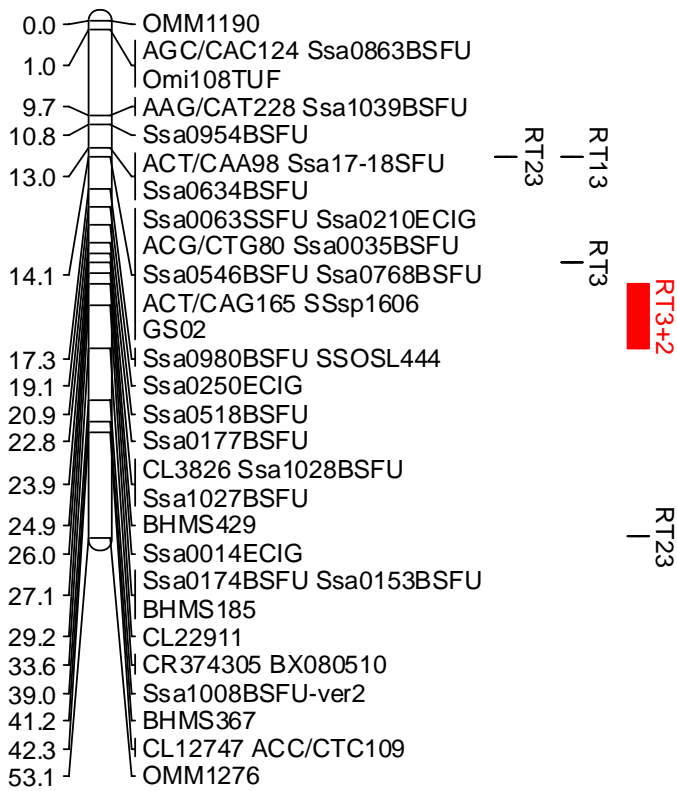
AS-1f



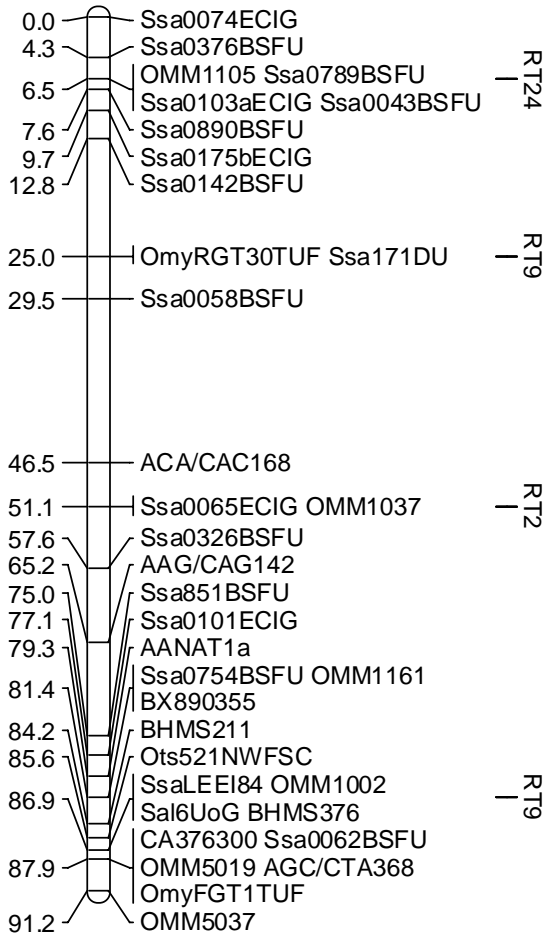
AS-2f



AS-3f



AS-4f



RT24

RT9

RT2

RT9

RT2

RT9

RT5

RT9

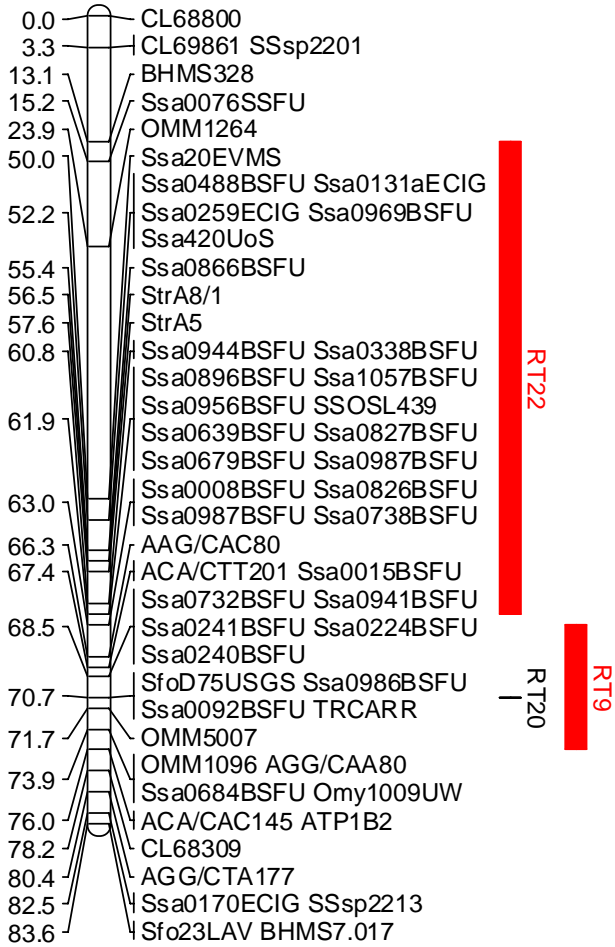
RT2

0.0 Omy27INRA

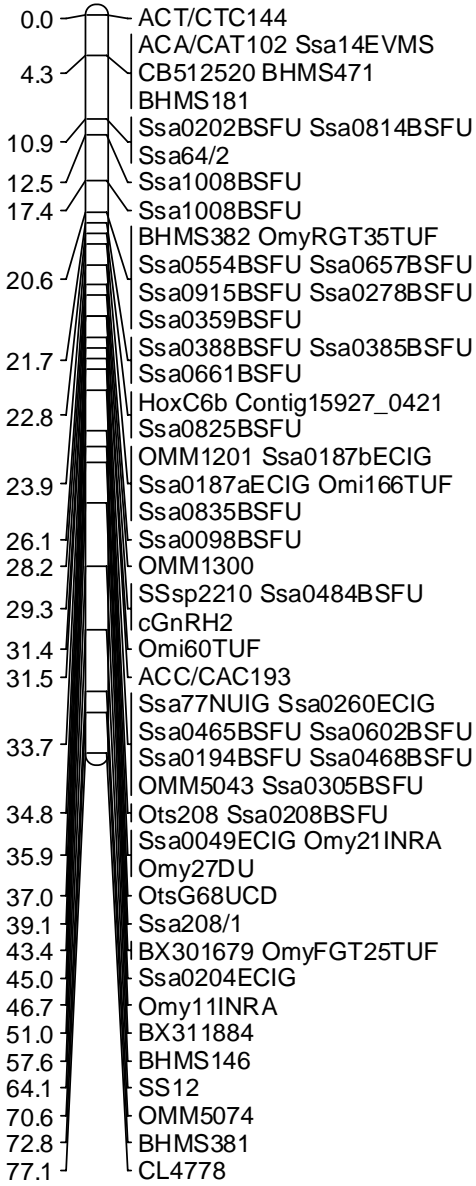
8.7 Ssa-A12 ACT/CAA115

9.7 HSP(VMS)

AS-5f



AS-6f



RT12

RT29

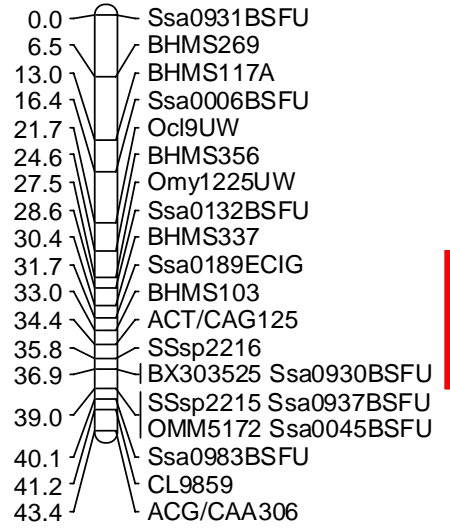
RT2

RT29

RT2

RT29

AS-7f



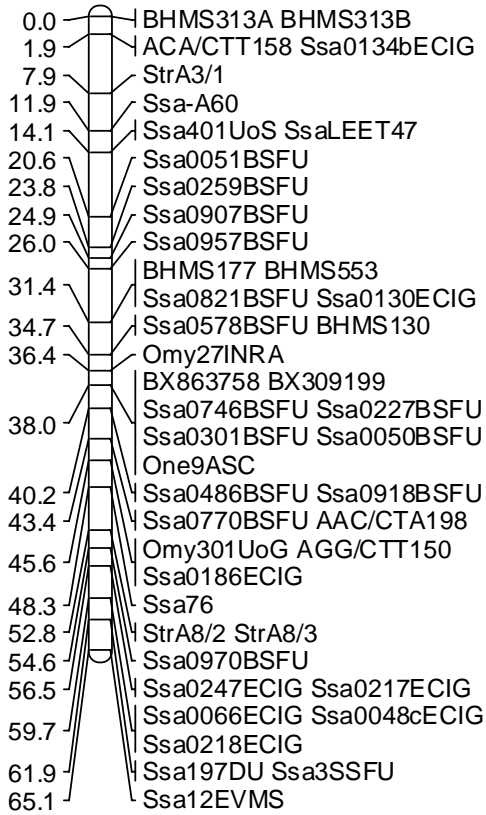
RT10



RT2

RT29

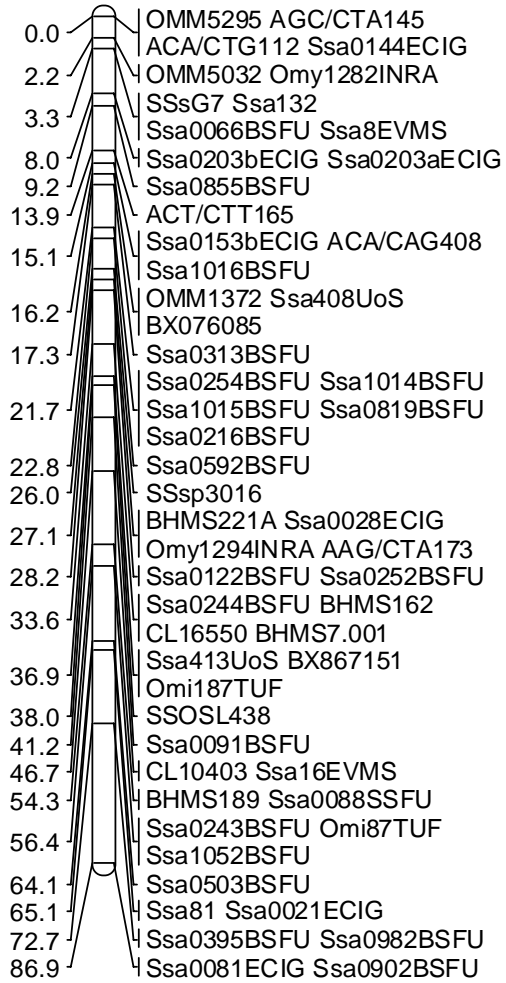
AS-8f



RT24 RT2

RT21

AS-9f



RT1

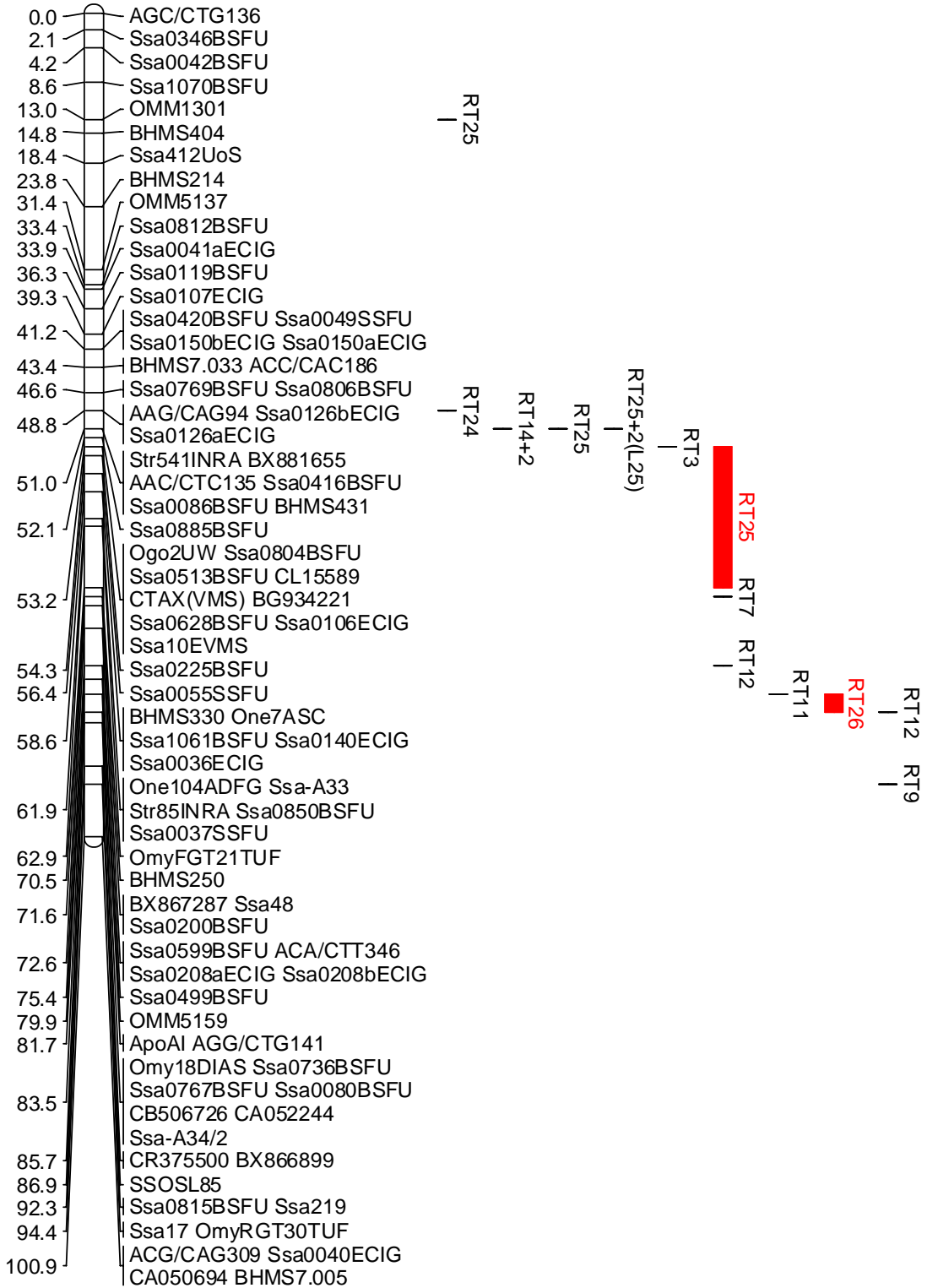
RT10

RT18+2(L25)

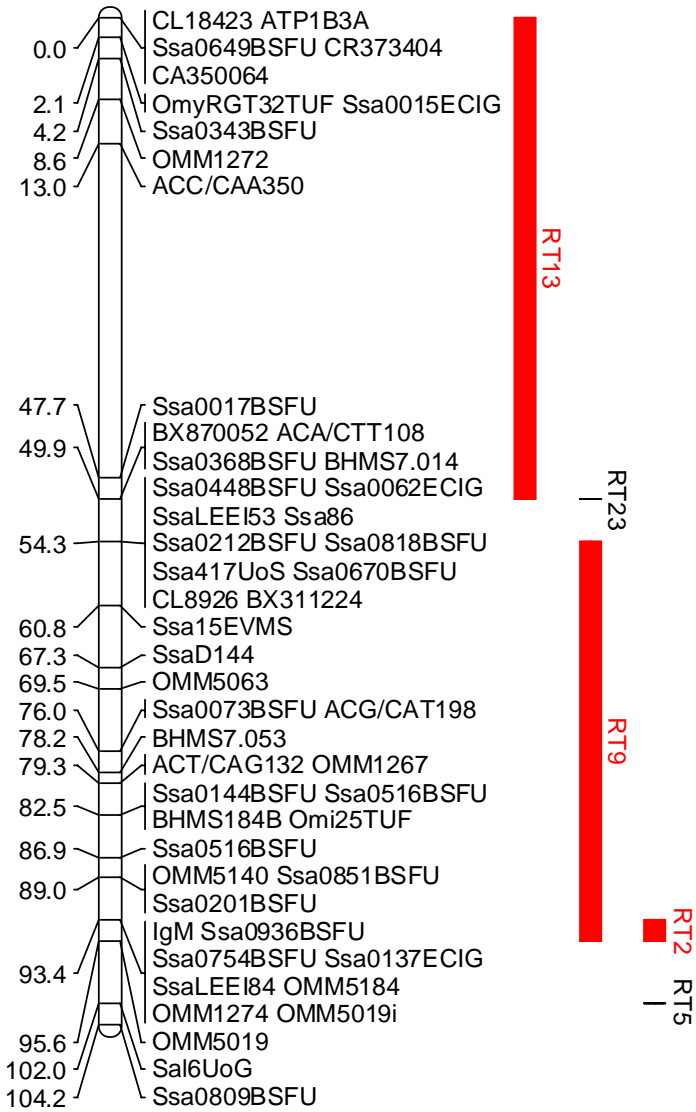
RT18(L25)

RT18(L44)

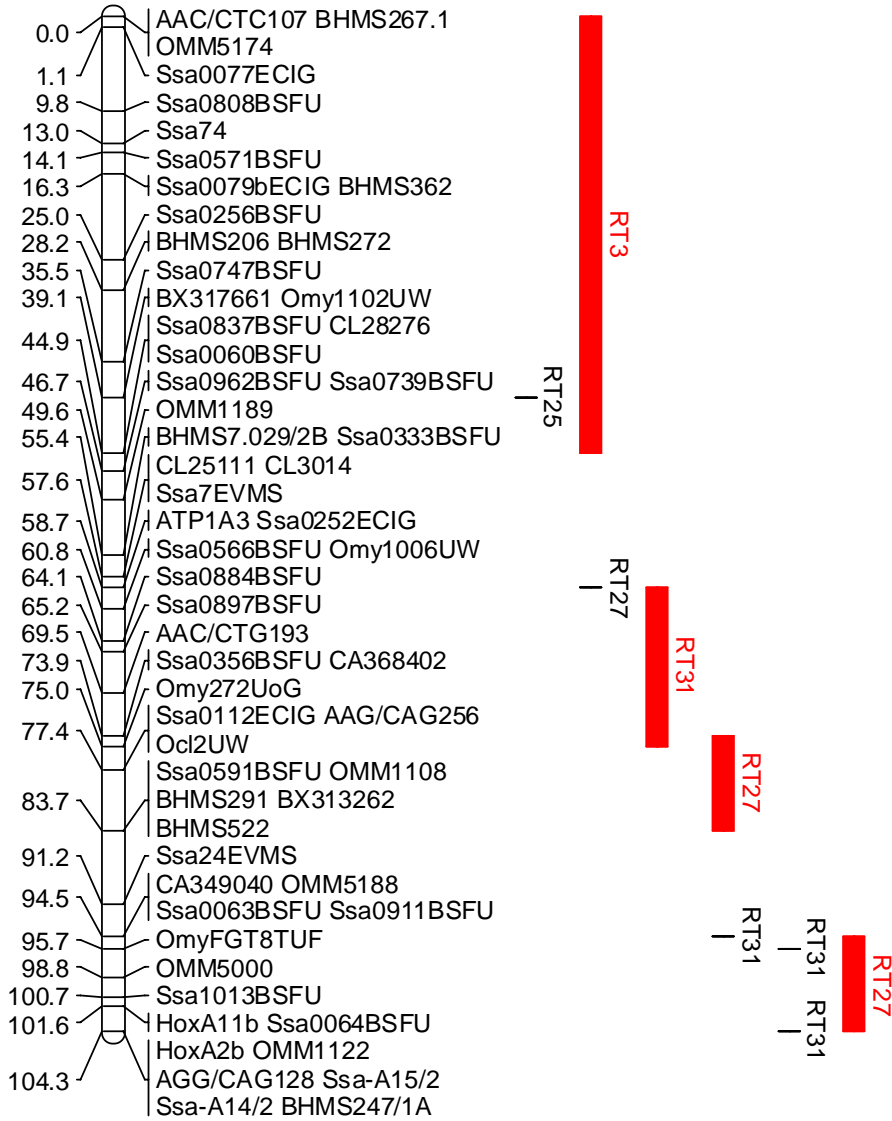
AS-10f



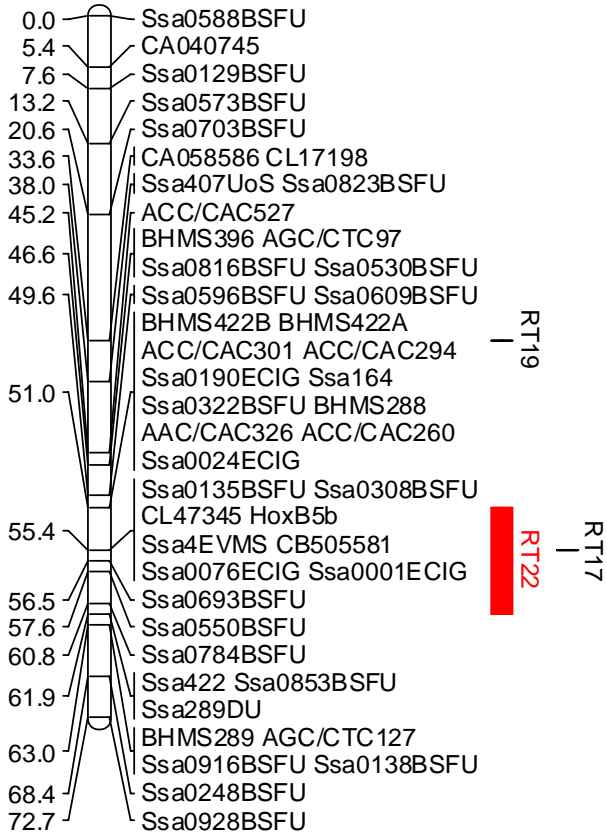
AS-11f



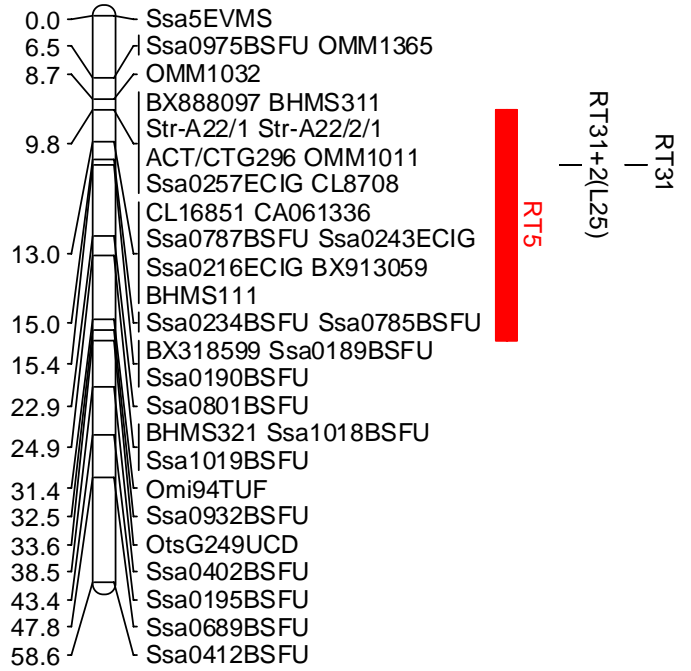
AS-12f



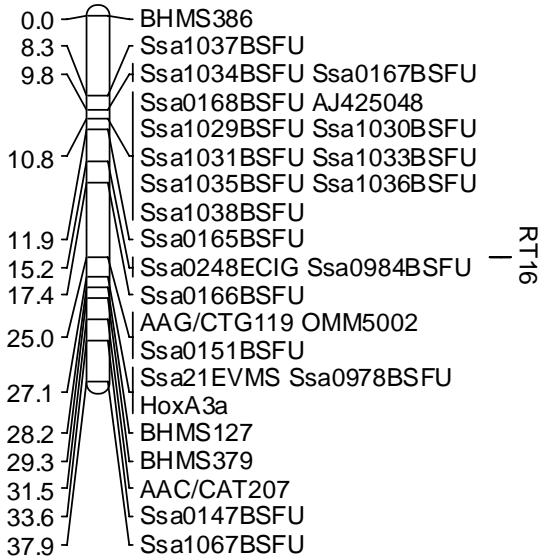
AS-13f



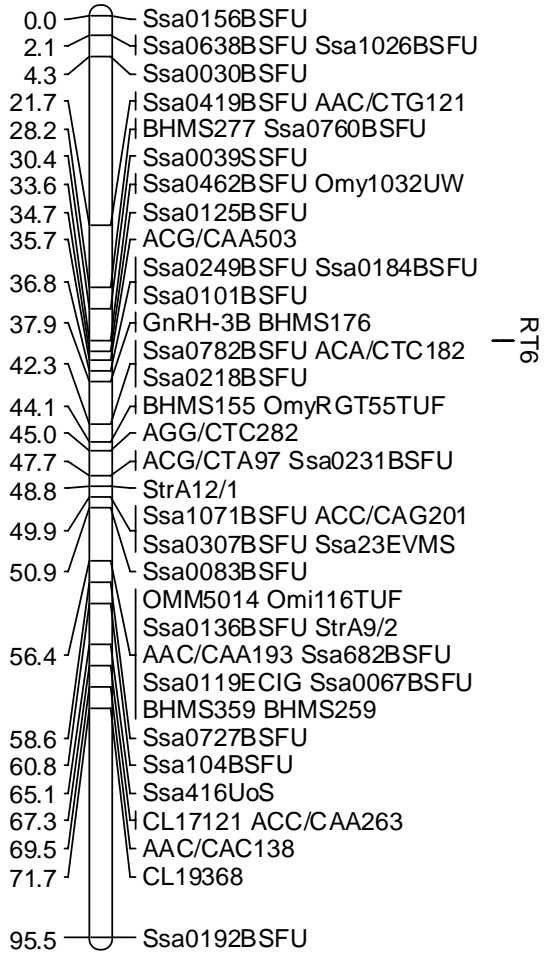
AS-14f



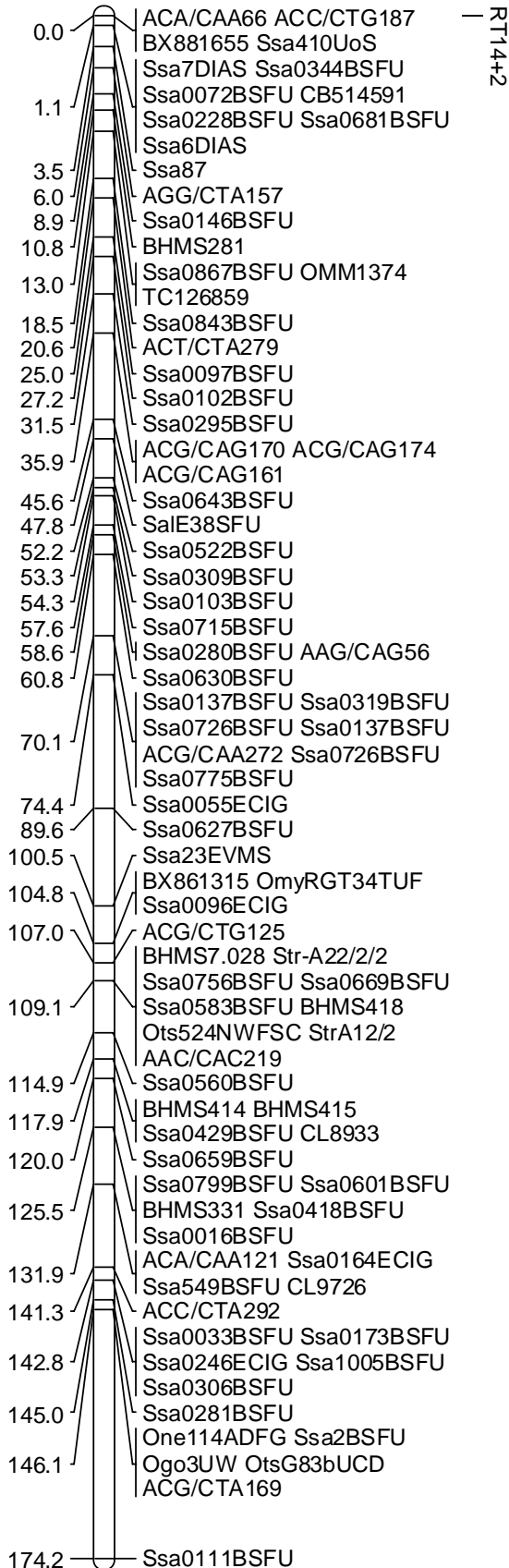
AS-15f



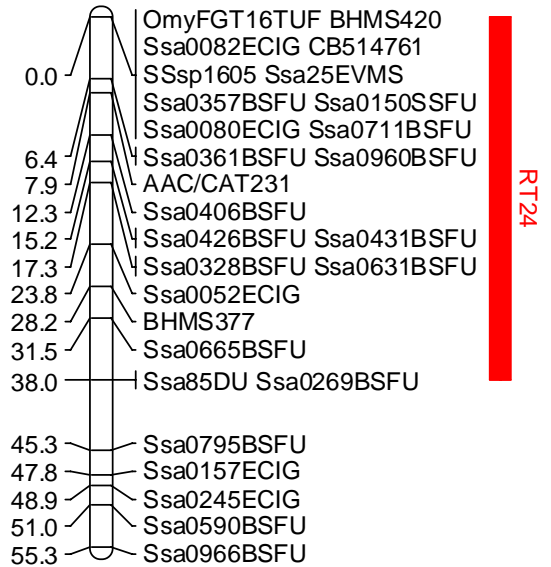
AS-16f



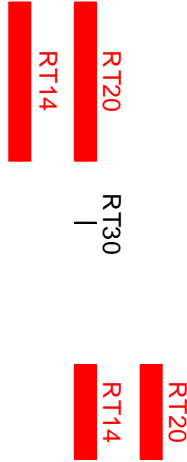
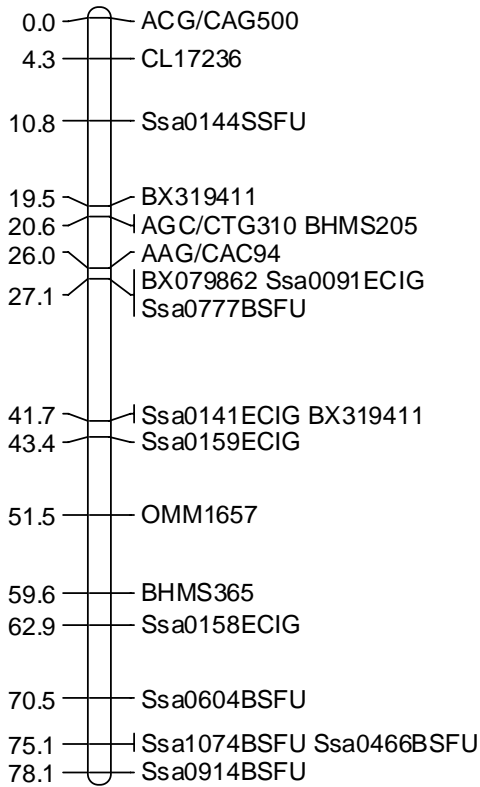
AS-17



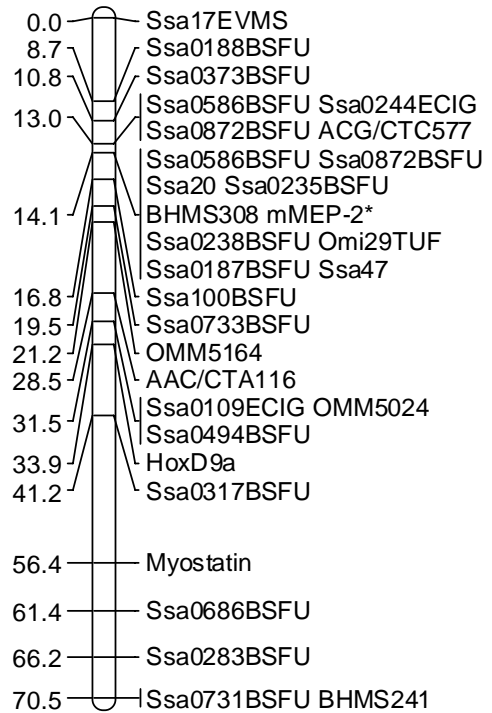
AS-18f



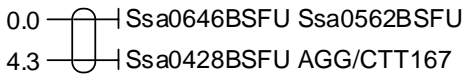
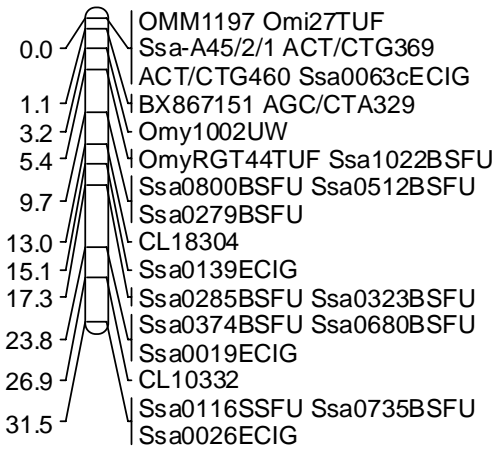
AS-19f



AS-20f



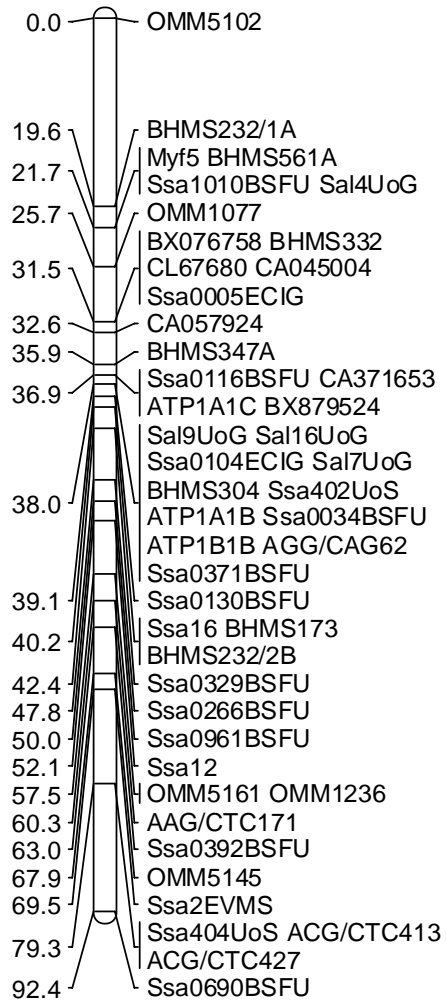
AS-21f



RT10

RT18

AS-22f



RT7

RT15

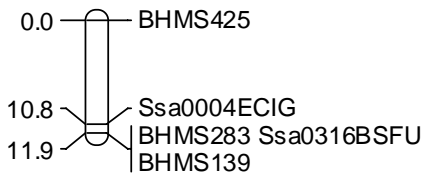
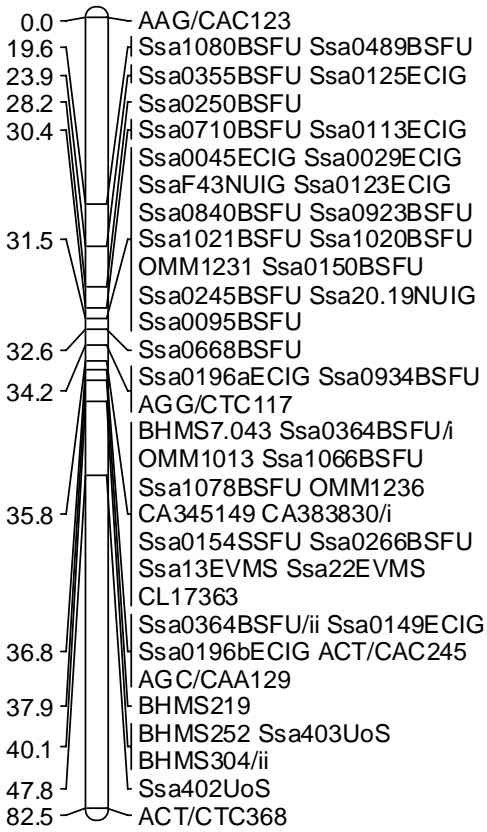
RT7

RT16

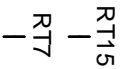
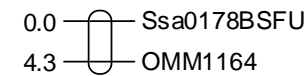
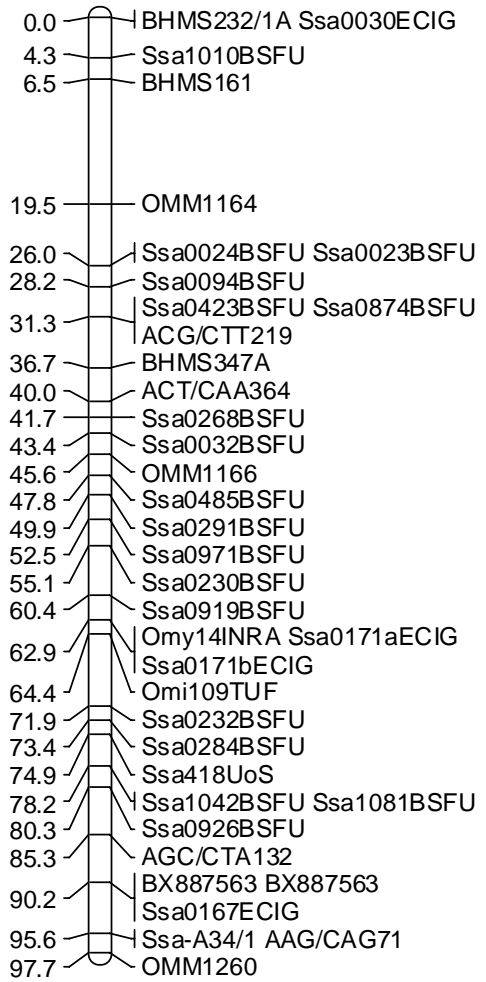
RT16

RT12

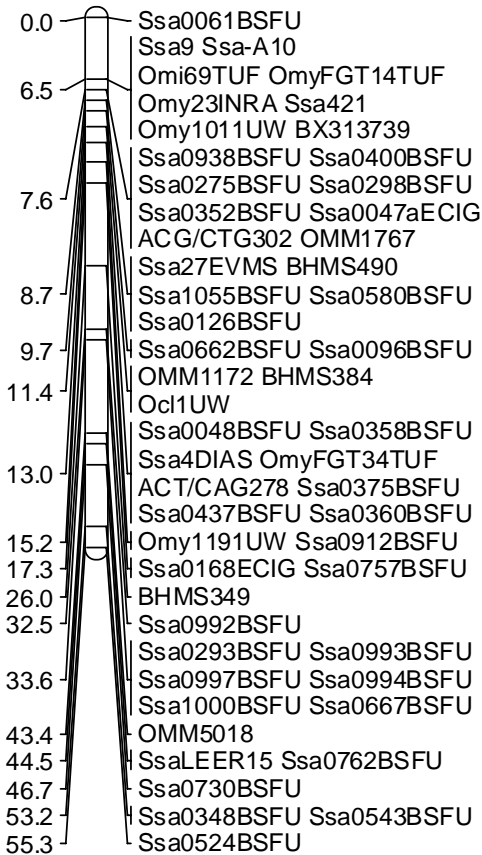
AS-23f



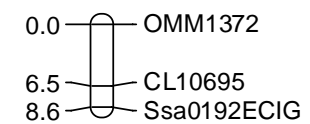
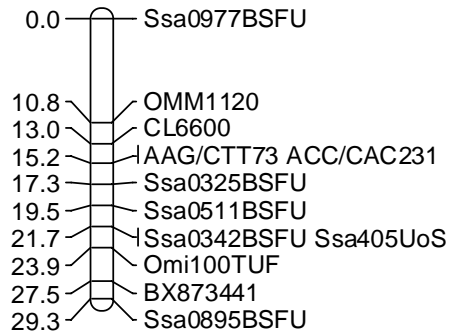
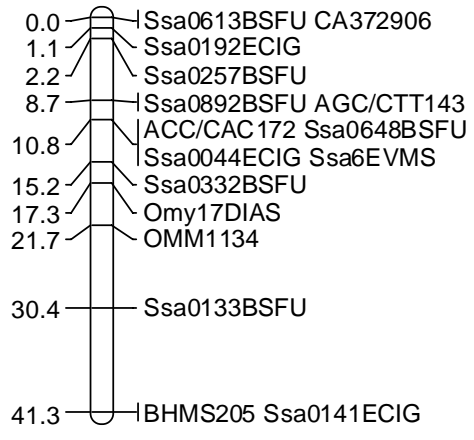
AS-24f



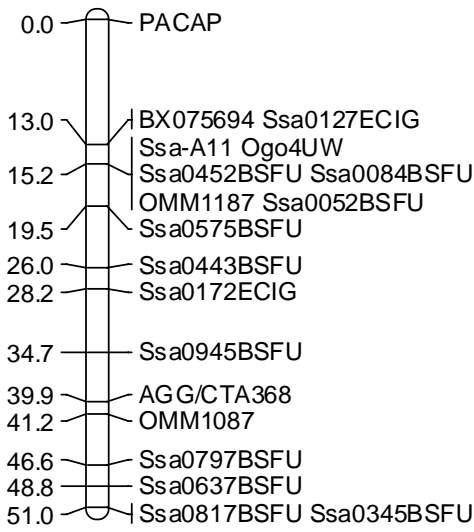
AS-25f



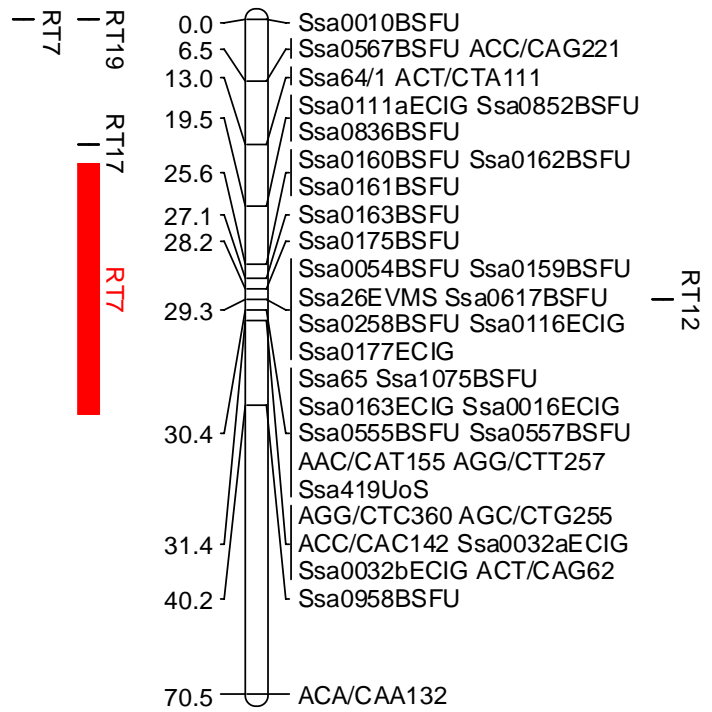
AS-28f



AS-31f



AS-32f



AS-33f

