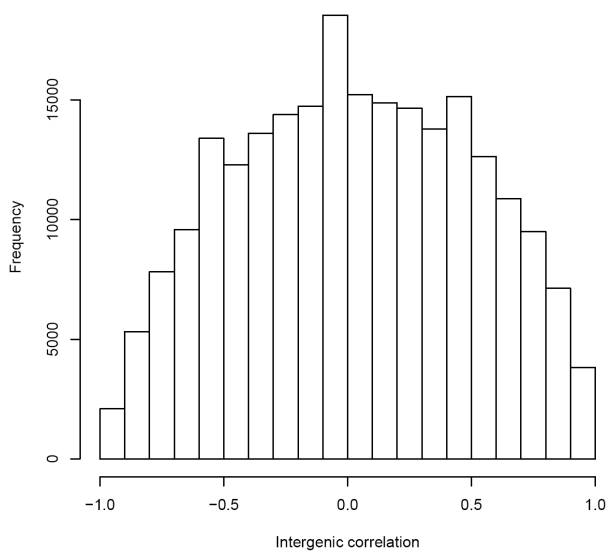
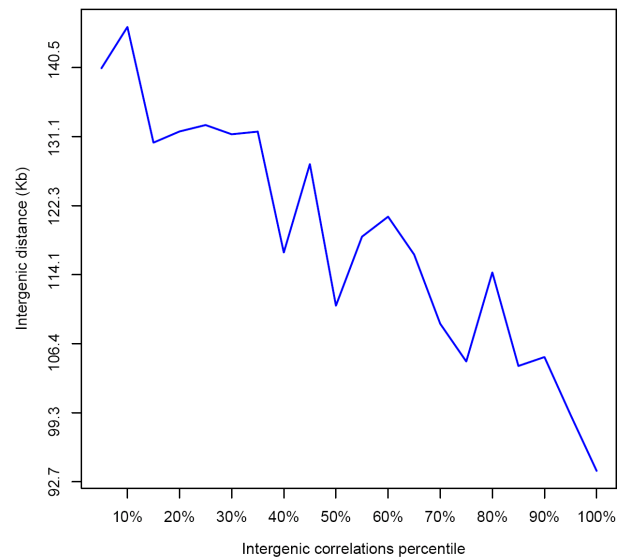


A



B



Inverse correlation between distance of adjacent gene pairs and correlation coefficients of corresponding expression vectors: positively correlated genes tend to be close each other, whereas negatively correlated genes tend to be separated by larger intergenic regions.

The above image represents A) the plot of frequency distribution of pairwise correlation coefficients of genes included in the genomic windows considered for computing Local Correlation Scores; B) the plot of average distance of pairs of adjacent genes within the considered genomic windows versus correlation percentile, showing an inverse relationship between distance and correlation.