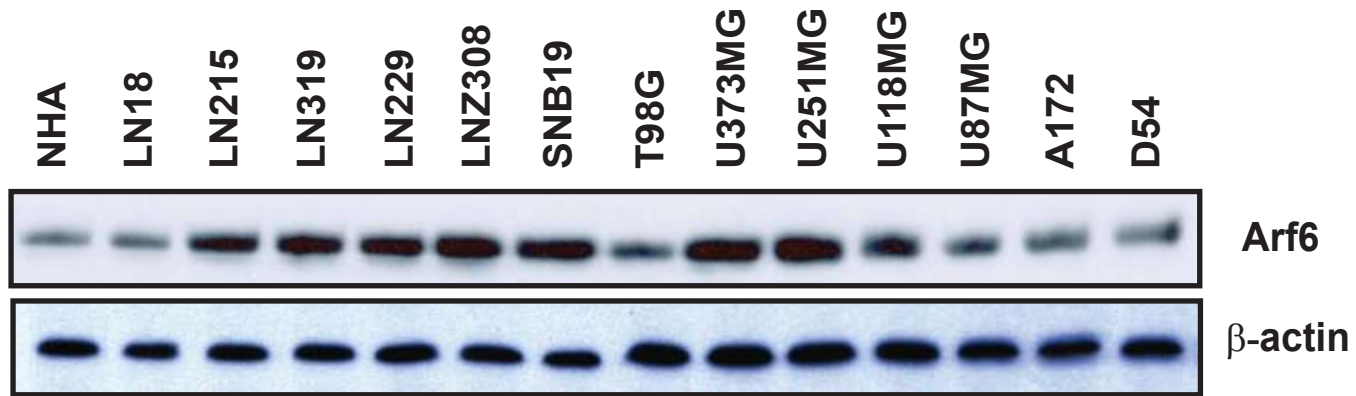


**Figure S1**



**Figure S1. ARF6 proteins are abundantly expressed in invasive glioma cell lines.** Immunoblot (IB) analysis of whole cells lysates of various human glioma cell lines and normal human astrocytes (NHA) with an anti-ARF6 antibody. IB for  $\beta$ -actin was used as a protein loading control. Data are representative of three independent experiments with similar results.