

Figure S1

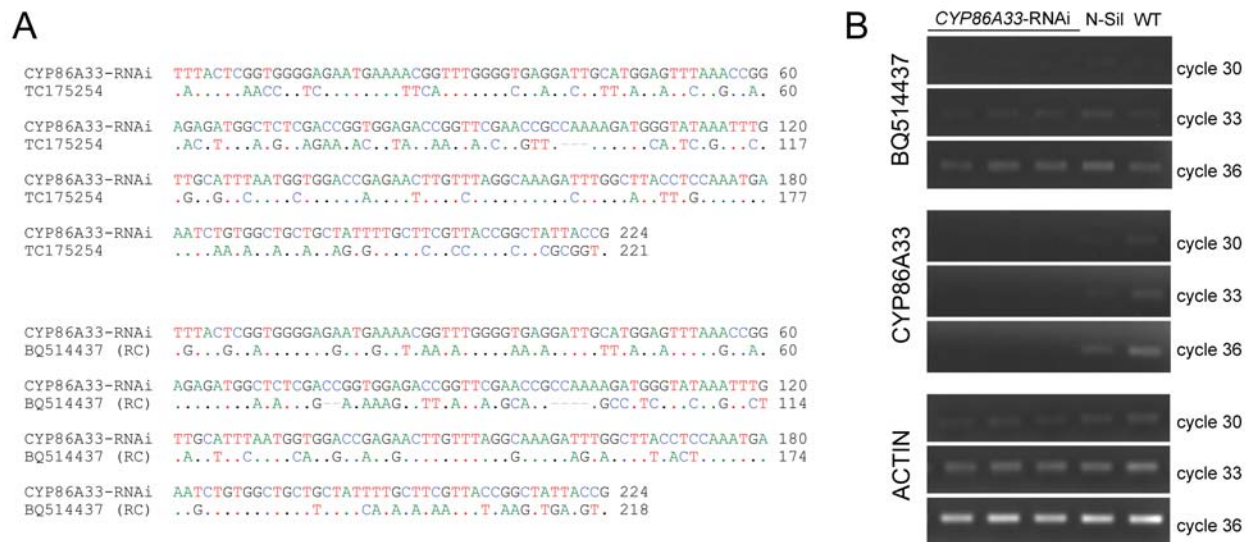


Figure S1. Analysis of the putative off-target EST BQ514437 in *CYP86A33*-RNAi periderm.

A. Alignment of *CYP86A33*-RNAi fragment with TC175254 and BQ514437 (reverse complement, RC) by CLUSTALW. Identical nucleotides are shown by dots.

B. RT-PCR analysis with PCR incremental cycle numbers of the *CYP86A33*, BQ514437 and *ACTIN* genes. PCR products were analyzed at the cycle numbers indicated in the left. Equal amount of cDNA was used as template for each sample as showed by the PCR amplification of *ACTIN*. Note that *CYP86A33* transcript levels are decreased in silenced lines whereas transcript levels corresponding to BQ514437 are similar in silenced (*CYP86A33*-RNAi), non-silenced (N-Sil) and wild-type plants (WT).