

# Supporting Information

Goldstein *et al.* 10.1073/pnas.0811411106

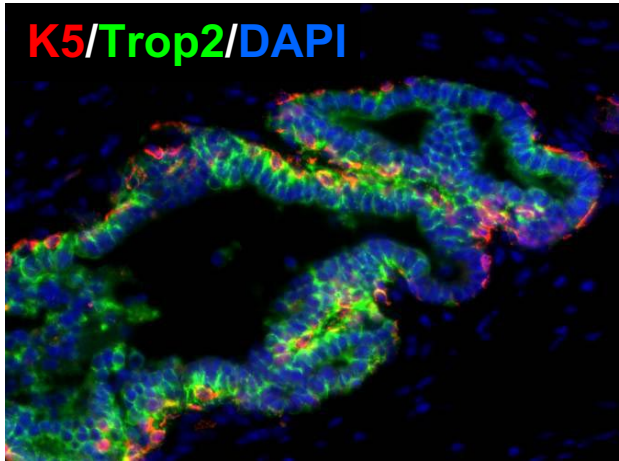
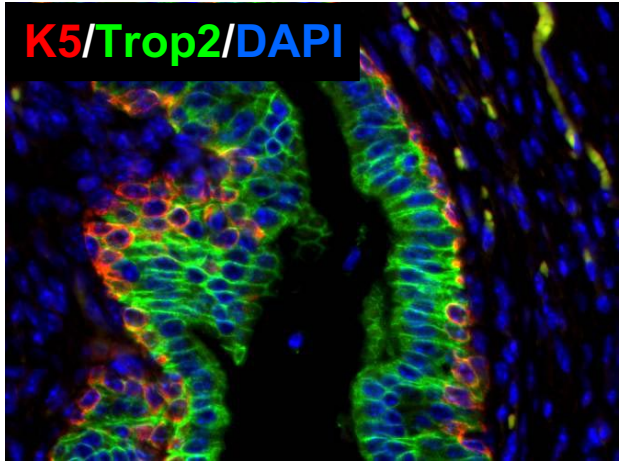
## SI Text

**Antibodies Used for Immunofluorescent and Histological Analysis.** Primary antibodies used were: CD49f (555734; BD Biosciences), Cytokeratin 5 (PRB-160P; Covance), Cytokeratin 8 (MMS-184I; Covance), p63 (sc-8431; Santa Cruz Biotechnologies), AR (sc-7305; Santa Cruz Biotechnologies), Trop2 (mouse: BAF1122; human: BAF650; R&D Systems), and Synaptophysin (MAB5258; Chemicon). Secondary antibodies used were: Alexa 594 or Alexa 488 anti-mouse (Invitrogen), Alexa 594 or Alexa 488 anti-rabbit (Invitrogen), and Alexa 594 or Alexa 488 conjugated to Streptavidin (Invitrogen).

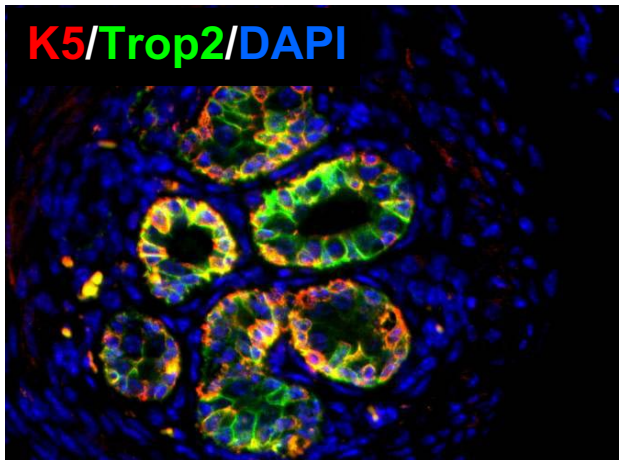
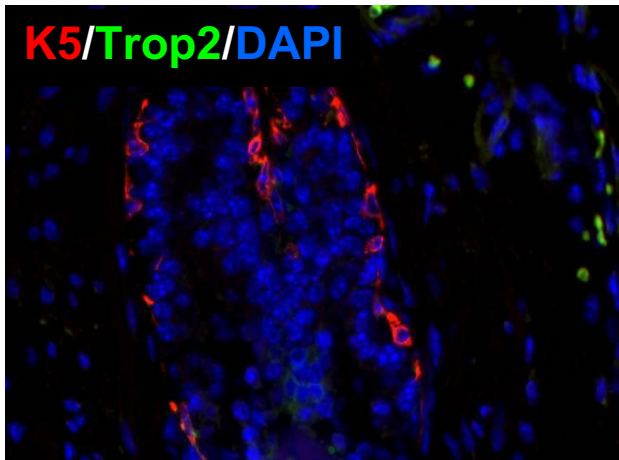
**Antibodies Used for FACS Analysis and Sorting.** Primary antibodies used were: CD49f-PE (555736; BD Biosciences), CD49f-Alexa647 (313610; Biolegend), Sca-1 PE-Cy7 (122514; Biolegend), CD31-FITC (11-0311; eBioscience), CD45-FITC (11-0451; eBioscience), Ter119-FITC (11-5921; eBioscience), and Trop2-biotin (mouse: BAF1122; human: BAF650; R&D Systems). Secondary antibodies used were: Streptavidin-APC (554067; BD Biosciences) and Streptavidin-APC-Cy7 (405208; Biolegend).

**Intact murine prostate**

**Castrated murine prostate**

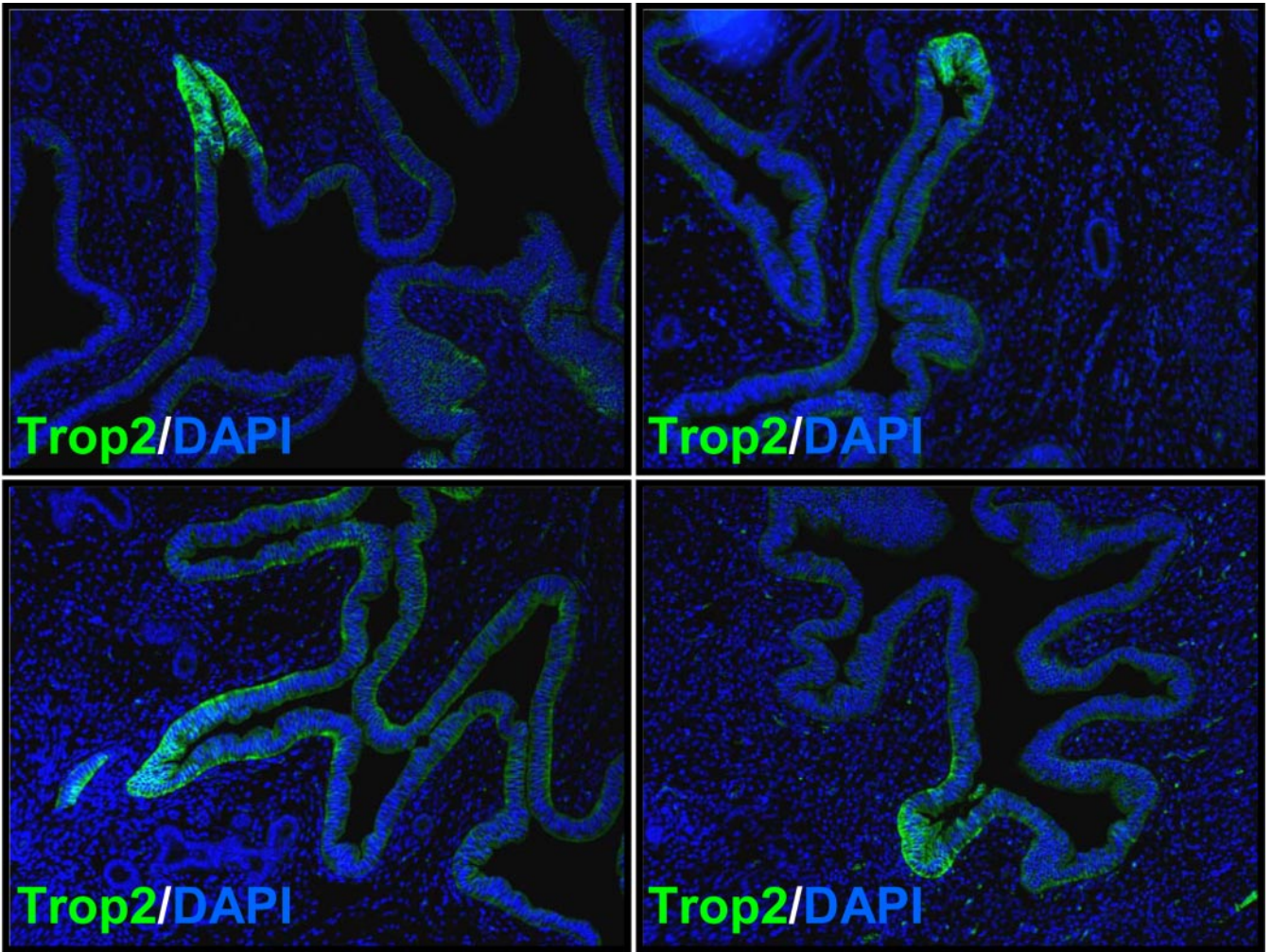


Proximal

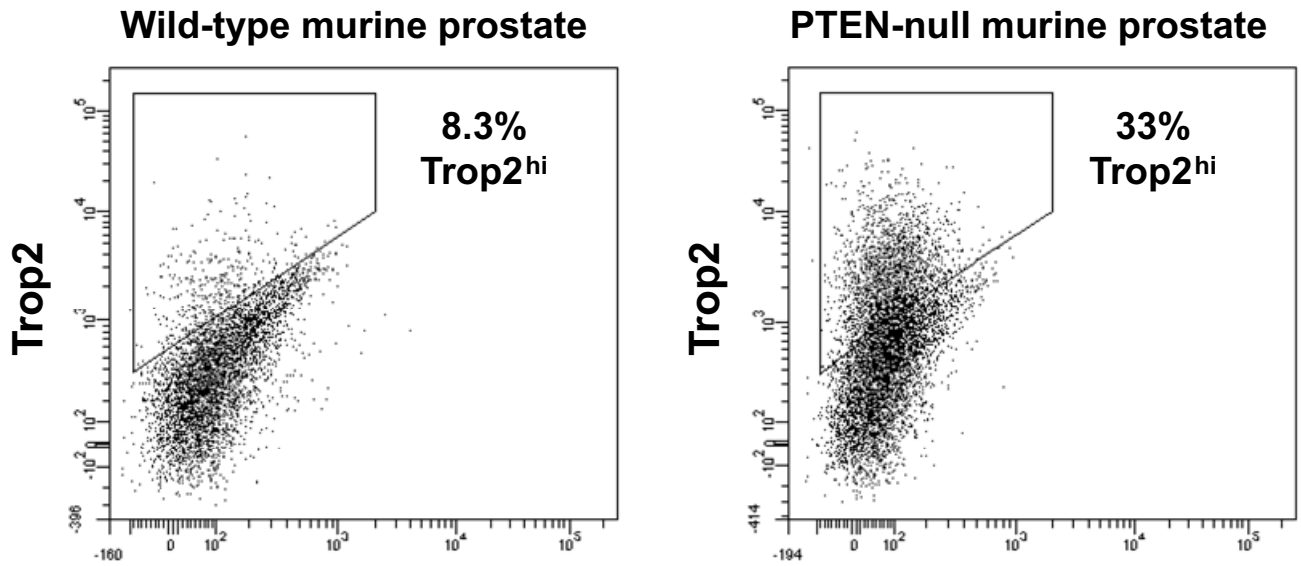


Distal

**Fig. S1.** An expansion of Trop2<sup>hi</sup> basal cells in the murine prostate after castration. Paraffin-embedded tissue sections of castrated and intact murine prostates were stained for antibodies against Trop2 and cytokeratin 5. Sections were counterstained with DAPI nuclear stain. (Original magnification: 400×.)



**Fig. S2.** Trop2 expression in murine endometrial glands. Frozen sections of adult murine endometrial glands were stained for Trop2 and counterstained with DAPI nuclear stain. (Original magnification: 100 $\times$ .)



**Fig. S3.** An expansion of Trop2<sup>hi</sup> cells in PTEN-null murine prostate cancer. Prostates from 15-week-old Pten-null and wild-type (C57BL/6) mice were dissociated into single cells and stained for Trop2. FACS plots show an increase in Trop2<sup>hi</sup> cells from Pten-null prostate tissue.

**Table S1. Primer sequences for qRT-PCR**

Gene	5' (listed from 5' to 3')	3' (listed from 5' to 3')
<i>Trop2</i>	AGACCAAAGCCTGCGCTGCG	AGCTGGGGTGCAGCTTGTAG
<i>p63</i>	TTATGAGCCACCACAGGTT	ACGCAGCTGCTGTTACACAT
<i>Sca-1</i>	CCATCAATTACCTGCCCTA	GGCAGATGGGTAAGCAAGA
<i>CD49f</i>	AGAGACATGAAGTCCGCGCA	ACCTTCCCAGATCATCATAG
<i>K14</i>	CCTCTGGCTCTCAGTCATCC	TGAGCAGCATGTAGCAGCTT
<i>K5</i>	GAGATCGCCACCTACAGGAA	TCCTCCGTAGCCAGAAGAGA
<i>Nkx3.1</i>	CTCCAGAGCCCGACAAAG	CACTTGCTAAGTCCCCTGGA
<i>GAPDH</i>	TGTTCTACCCCAATGTGT	GGTCCTCAGTGTAGCCCAAG