

Supplemental data for:

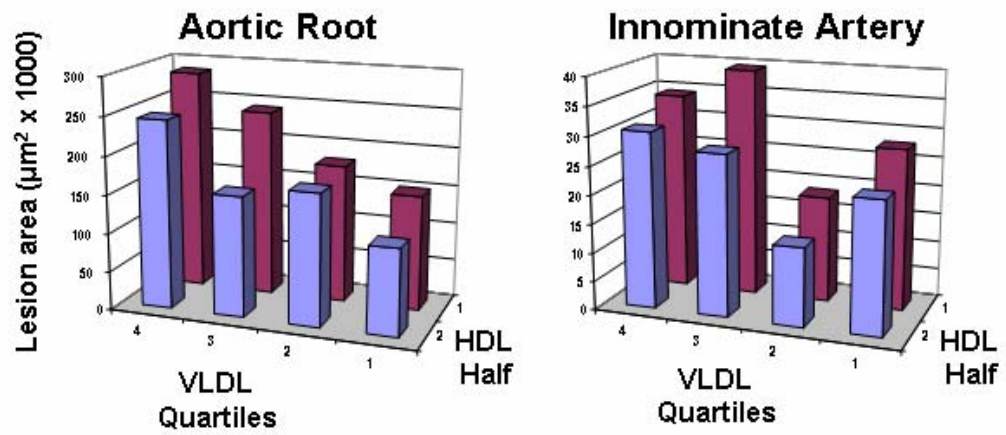
VLDL Best Predicts Aortic Root Atherosclerosis in Low Density Lipoprotein Receptor Deficient Mice

Paul A. VanderLaan[†], Catherine A. Reardon[†], Ronald A. Thisted[‡], and Godfrey S. Getz^{†*}

Supplemental Figure Legend

Figure S1. Progressive quartiles for VLDL cholesterol and upper and lower half of HDL cholesterol and the corresponding aortic root and innominate artery atherosclerotic lesion size are plotted for the entire LDLR^{-/-} data set.

Figure S1



apoE^{-/-} mice

	Total Cholesterol	Triglycerides	VLDLc	LDLc	HDLc	nonHDLc / HDLc
LDLR^{-/-} mice (n= 235)	0.003	0.011	0.005	0.001	0.014	0.002
ApoE^{-/-} mice (n= 128)	0.043	0.025	0.032	0.020	0.048	0.021

Each lipid variable was plotted against innominate artery lesion size and the R² value determined from the slope of the line.