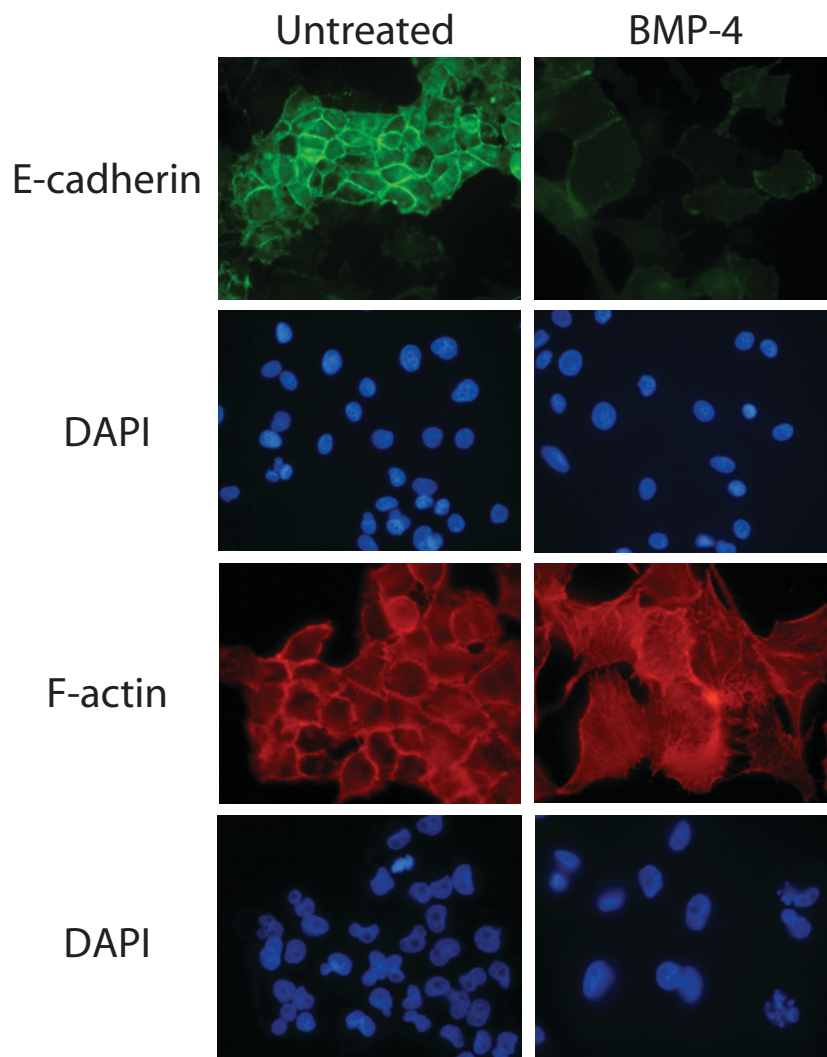
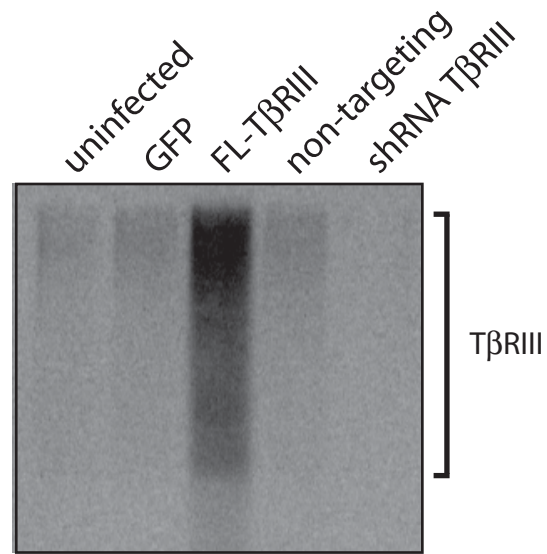


Supplemental Figure 1



Supplementary Fig. 1. BMP-4 Induces E-cadherin Relocalization and Actin Reorganization. Immunofluorescence of the epithelial marker, E-cadherin (green) and localization of F-actin (red) to assay for EMT. DAPI (blue) was used to stain the nuclei.

Supplemental Figure 2



Supplementary Fig. 2. TβRIII levels are altered by adenoviral infection. Autoradiograph of the level of TβRIII as determined by binding and crosslinking of [¹²⁵I]-TGF-β to Panc-1 cells adenovirally infected (50 M.O.I.) with GFP control, wild-type HA-tagged TβRIII-IRES-GFP (FL-TβRIII), a non-targeting shRNA control or shRNA against TβRIII, as indicated. The image is representative of 3 independent experiments.