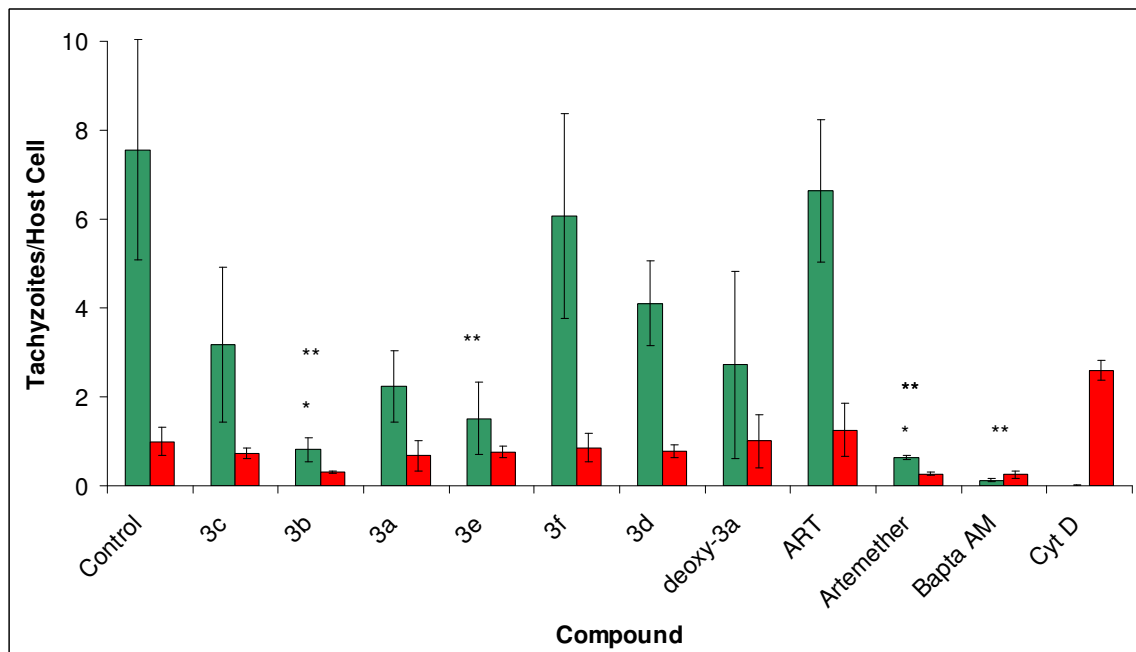


Supplementary data

Colour version of Figure 1(c)



Colour version of Figure 1(d)

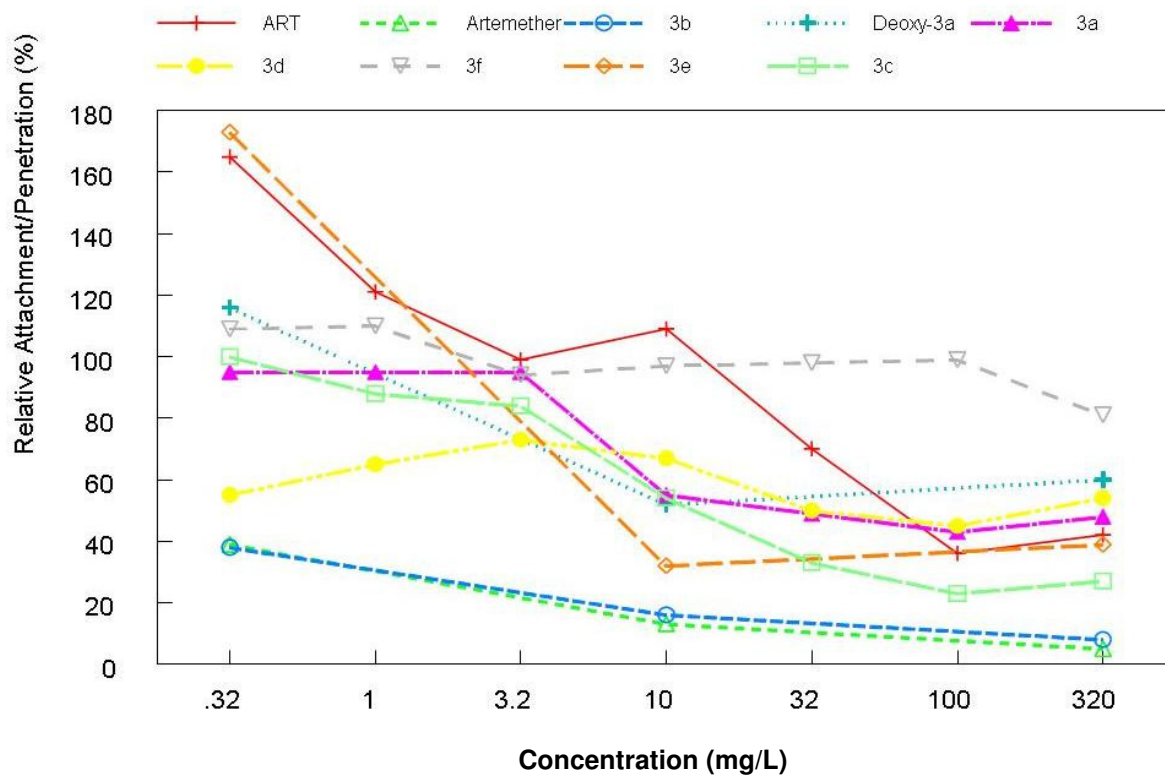


Figure S1. Representative graph of inhibition of *T. gondii* by ART derivatives over the concentration range tested in the 5 day growth inhibition assay, 320–0.032 mg/L. All derivatives except **deoxy-3a** produced standard sigmoidal curves. Shown are the data for derivative **3a**.

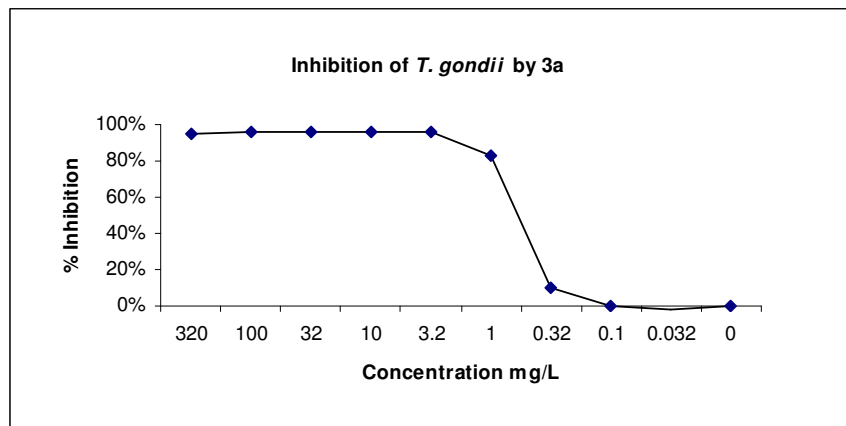


Figure S2. Replication assay (see the Materials and methods section). Representative fluorescence images of fibroblast monolayers infected with strain 2F tachyzoites and then treated with ART, ART derivatives or DMSO. Infections were allowed to continue for 26 h. After fixation, tachyzoites within vacuoles were immunostained red and host nuclei stained blue. Numbers of vacuoles containing 1, 2, 4, 8 or 16+ parasites/vacuole were enumerated (see Figure 1b). Shown are images of the most common sized vacuole for each individual drug. Fewer parasites indicates inhibition.

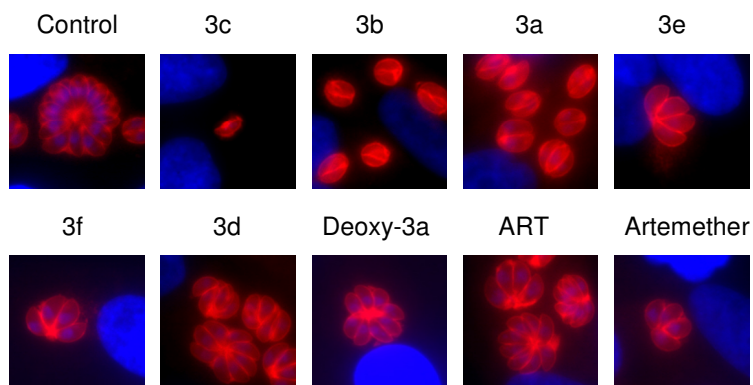


Figure S3. Invasion assay (see the Materials and methods section). Representative fluorescence images of fibroblast monolayers infected with strain 2F tachyzoites that had been treated with ART, ART derivatives or DMSO. Attached/extracellular parasites are stained red, penetrated/intracellular parasites are stained green and host nuclei are stained blue. Numbers of green and red parasites were enumerated (see Figure 1c). Fewer total parasites and/or an increased number of attached versus penetrated parasites indicates inhibition.

