

Supplementary Figures and Legends

Figure S1

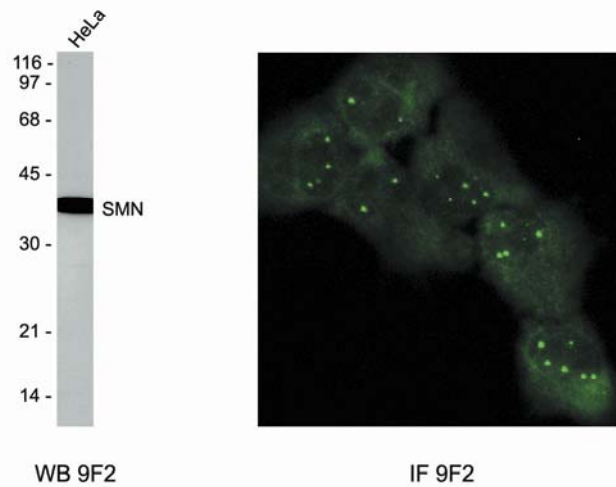


Figure S1: Characterization of mAb 9F2. Western blotting of HeLa lysate reveals a single band of 38 kD (A). Immunofluorescence analysis of HeLa cells demonstrates that mAb 9F2 shows proper localization of SMN diffusely throughout the cytoplasm as well as in prominent nuclear foci (Cajal bodies).

Figure S2

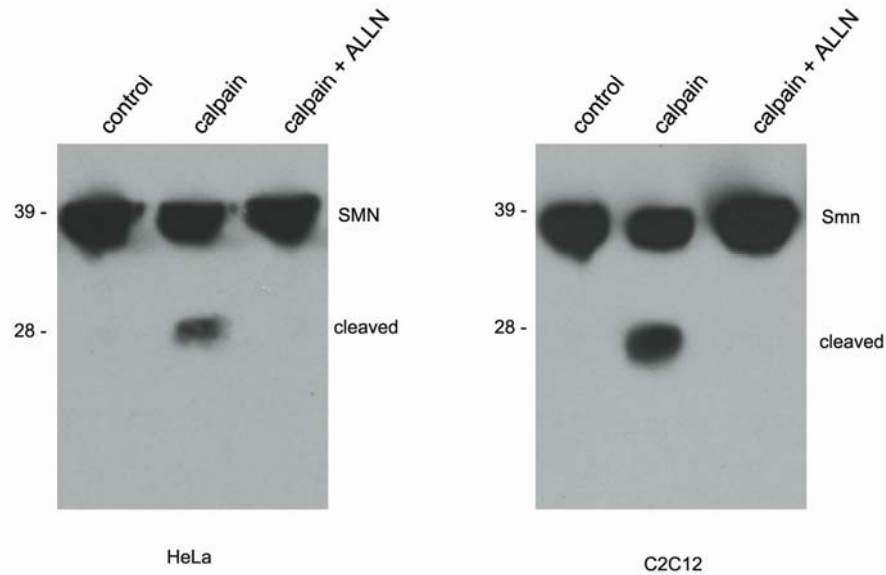


Figure S2: Inhibition of calpain cleavage in human and mouse cell lysates using ALLN. Lysates from human and mouse cells (HeLa and C2C12, respectively) were incubated with exogenous calpain and 1 mM added Ca^{++} in the presence or absence of the calpain inhibitor ALLN. The SMN cleavage profile was analyzed.