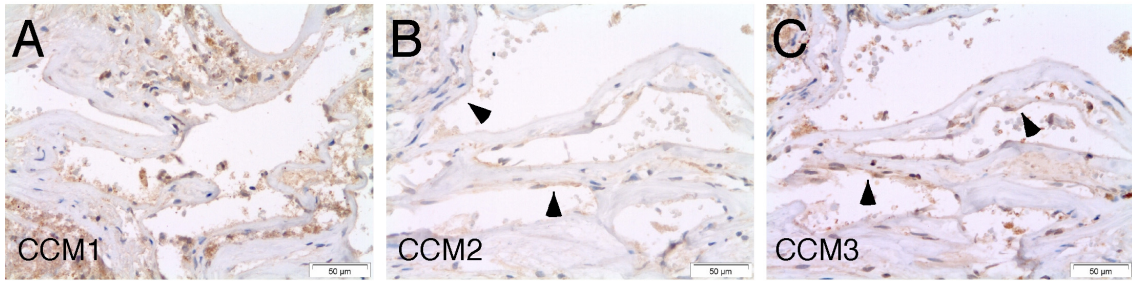
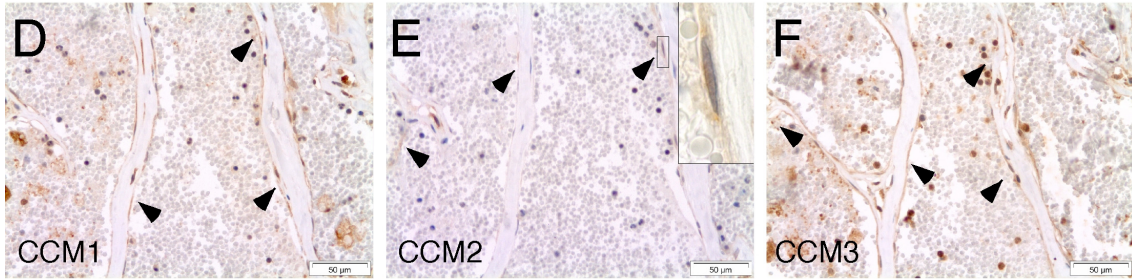


Supplemental Figure 1. (A) CCM1 protein expression in cavernous endothelia from a *CCM1*:c.1683_1684insA germline mutation carrier (No. 1, table 1) is markedly reduced while (D) the gene product of *CCM1*:c.2143-2A>G germline mutation carrier (No. 3, table 1) retains immunoreactivity in accordance with *in vitro* data (18). (H, K) Two sibs carrying a *CCM2* mutation at the N-terminus of the gene product (No. 5, 6, table 1) reveal unequivocal immunonegativity for the anti-CCM2 antibody. (B-C, E-F, G, I, J, L) Concomitant expression of the other two CCM proteins.

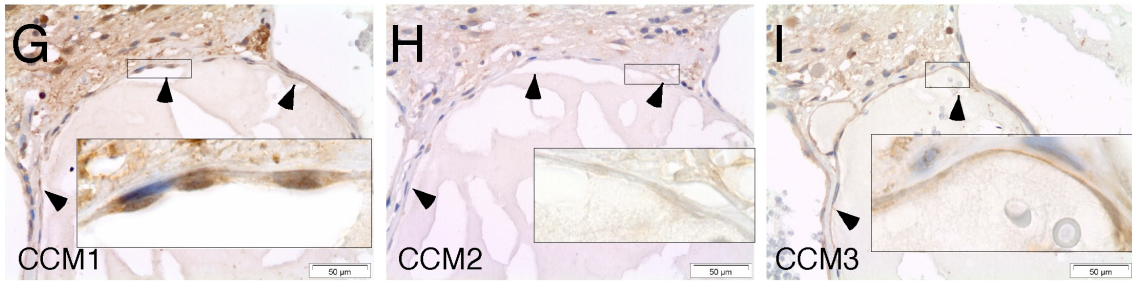
CCM1:c.1683_1684insA



CCM1:c.2143-2A>G



CCM2:c.55C>T



CCM2:c.55C>T

