

Supporting Information

Walton et al. 10.1073/pnas.0809275106

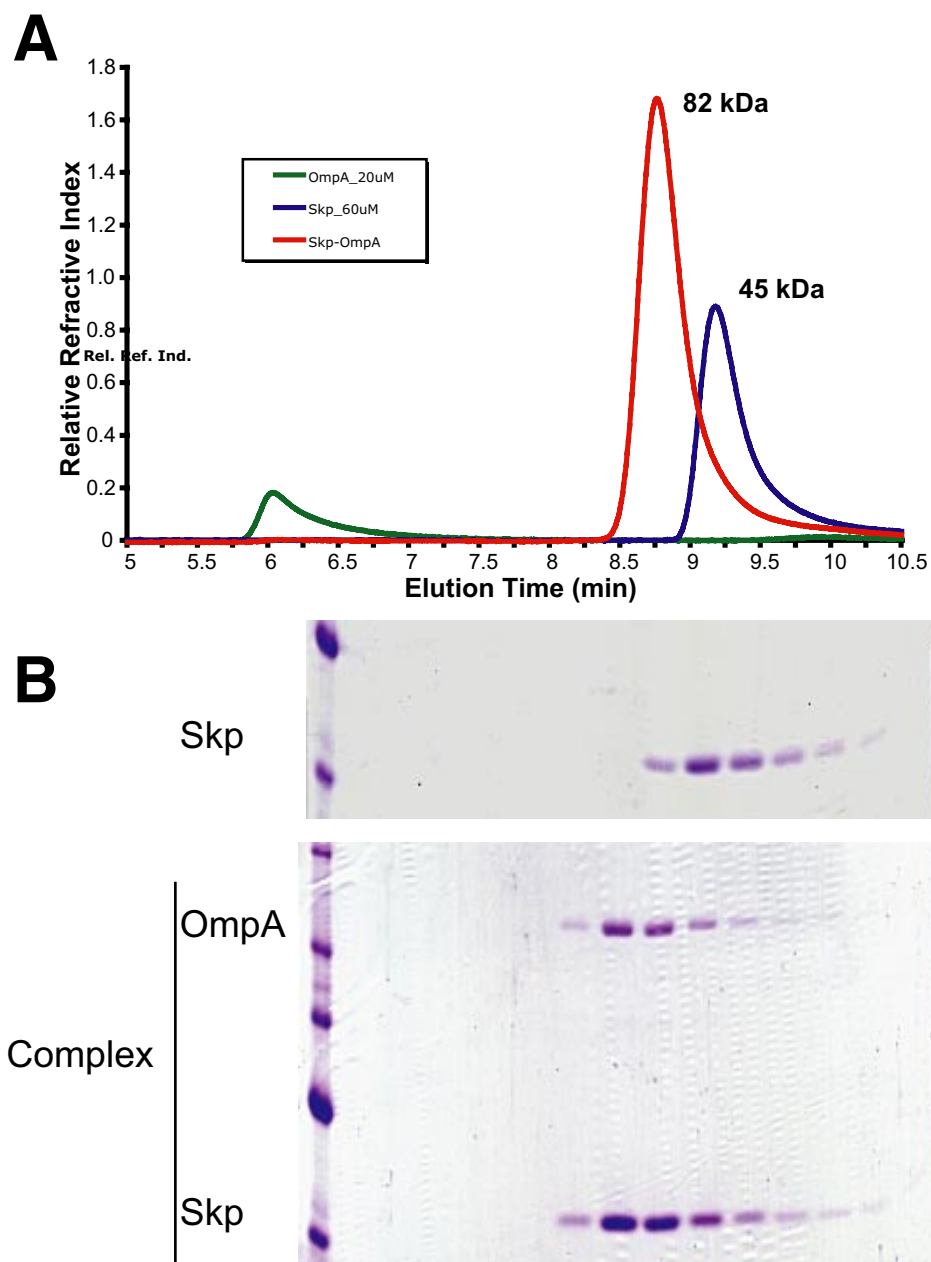


Fig. S1. Formation of Skp–OmpA complex detected by SEC. OmpA (green trace), Skp (blue trace), and Skp–OmpA complex (red trace) were analyzed by SEC and detected by refractive index. The absolute mass of the proteins eluted from the SEC column as monodisperse peaks was calculated from scattering data collected with a MALS detector (Wyatt Technologies) and are indicated next to the peak. (B) SDS/PAGE analysis of 0.25-mL fractions of the SEC runs collected from 7.5 to 11 min. (Upper) Fractions from the blue trace. (Lower) Fractions from the red trace.

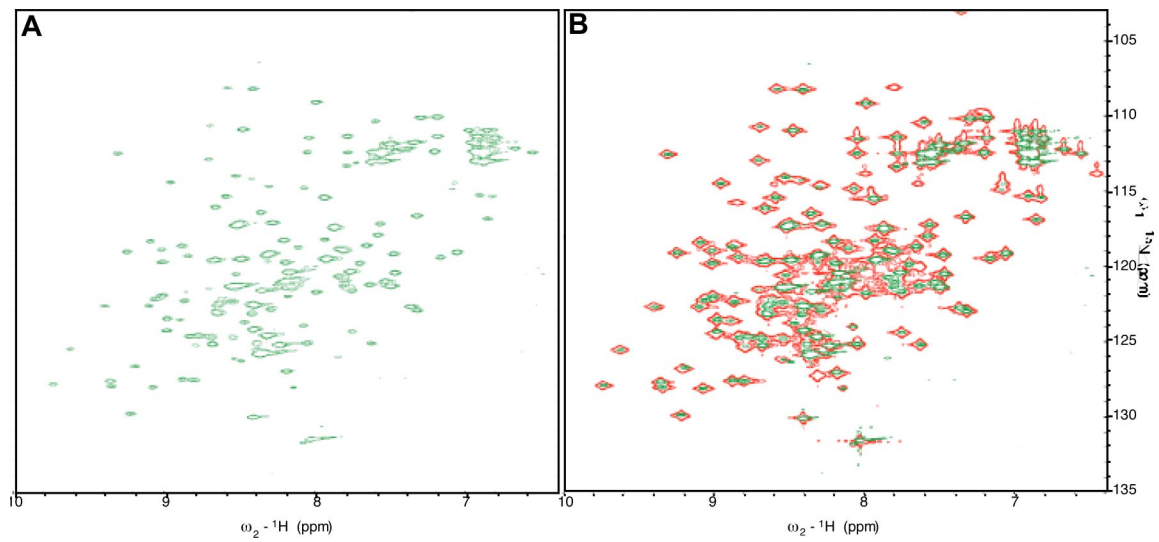


Fig. S2. 2D ^1H , ^{15}N HSQC of ^{15}N -labeled OmpA₁₇₇₋₃₂₅. (A) OmpA₁₇₇₋₃₂₅ after denaturation in GuHCl and dilution into buffer containing Skp. (B) Overlay of spectrum of native OmpA₁₇₇₋₃₂₅ (red) onto the spectrum shown in A (green)