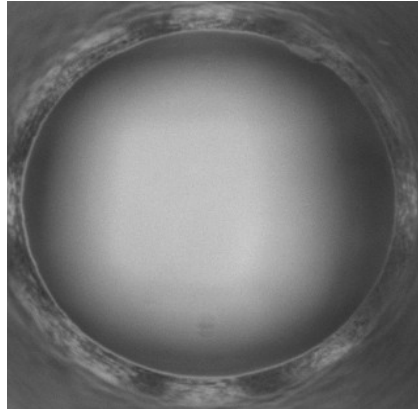
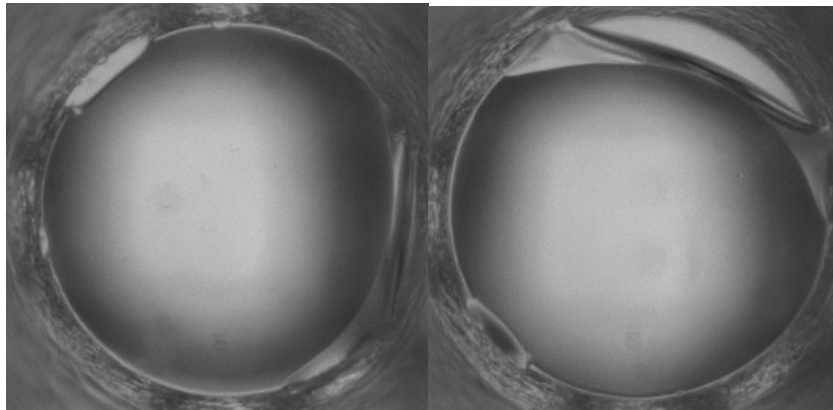


Tutorial for Image Analysis

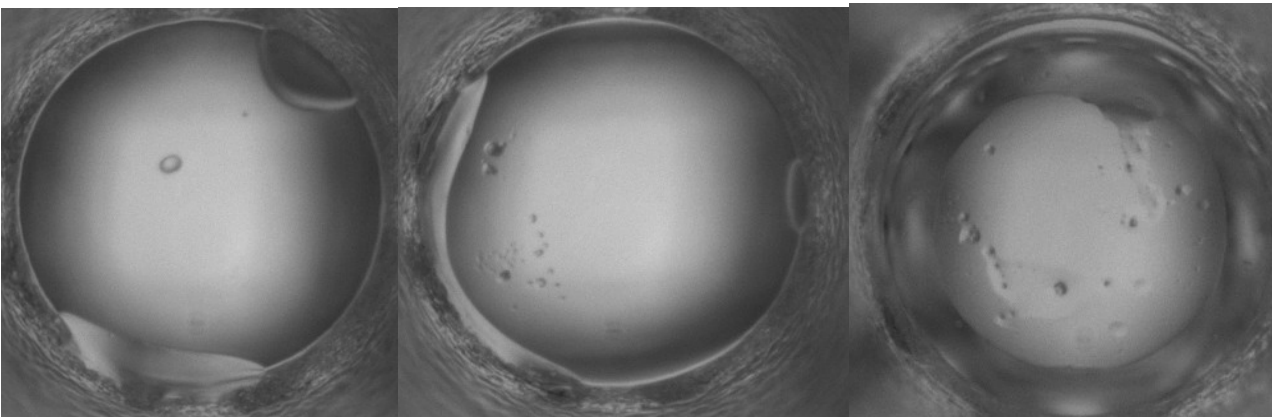
1. Clear:



The Low Birefringence (LBR) plates tend to have “humps” along the edge of the wells.



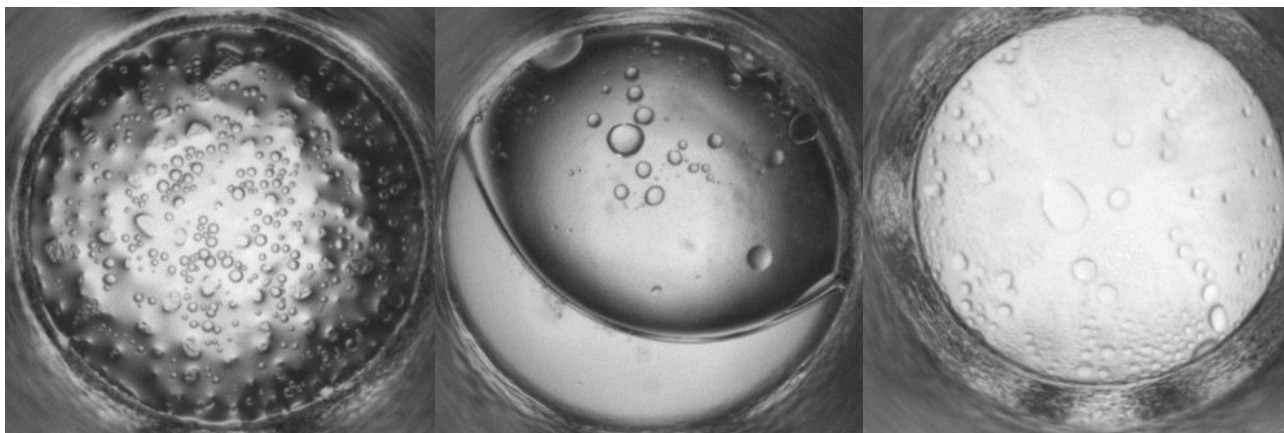
Even though they aren't completely clear, we consider them clear and move on.



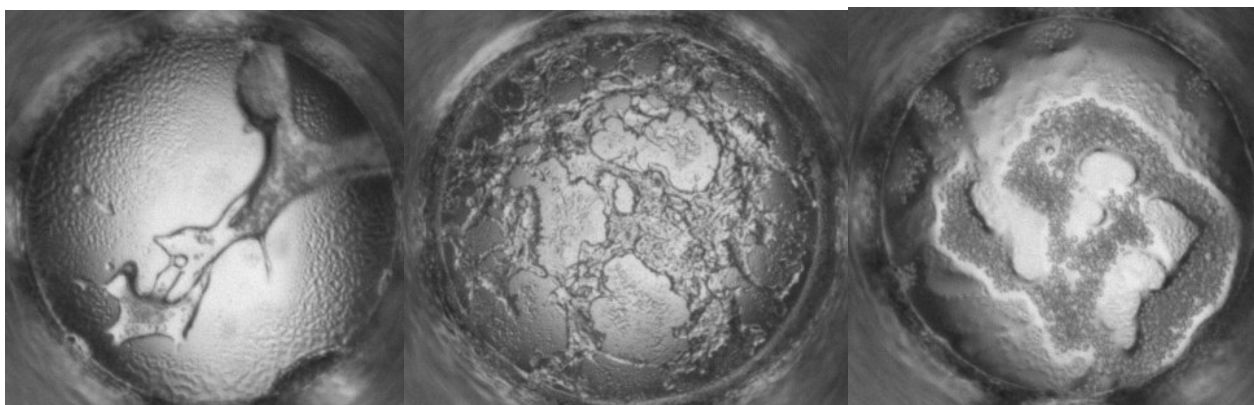
2. Phase Separation:

Various types of phase separations can be observed

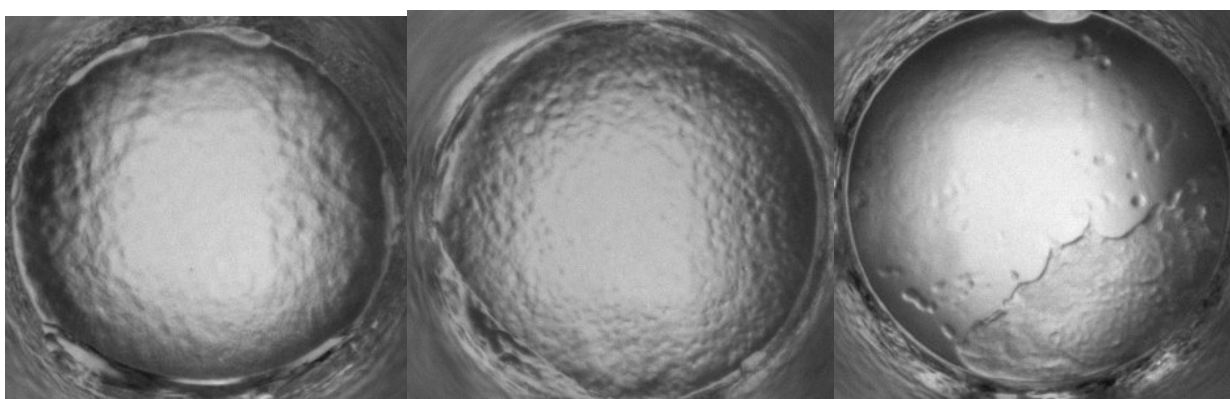
A) Oil: Little Bubbles



B) Gel:

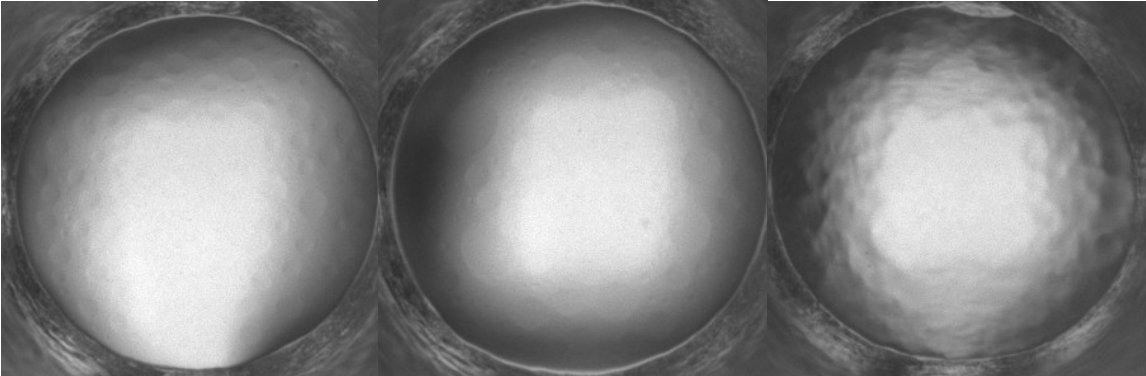


C) Wavy:

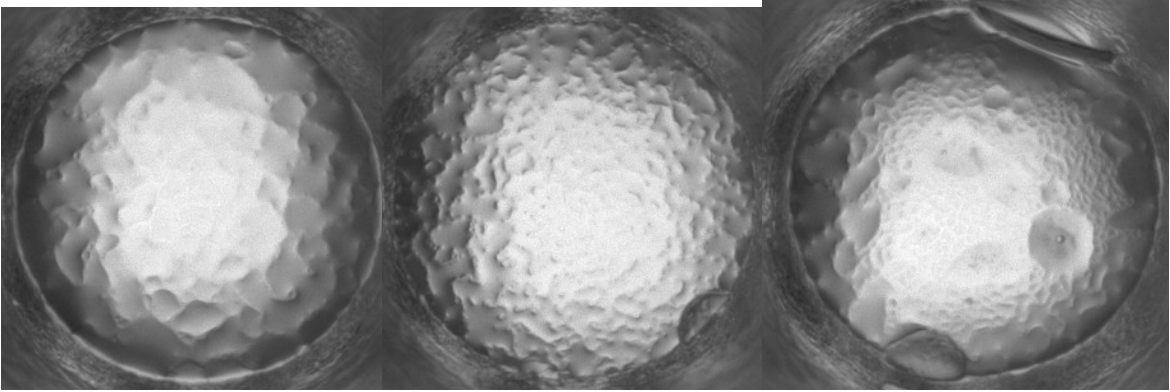


Other Phases:

D) "Lumps": crater-like indentations in well.



E) "Surface puckering": more sever "Lumps"

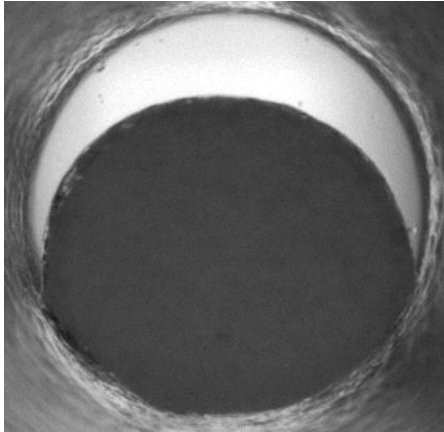


3. Precipitate:

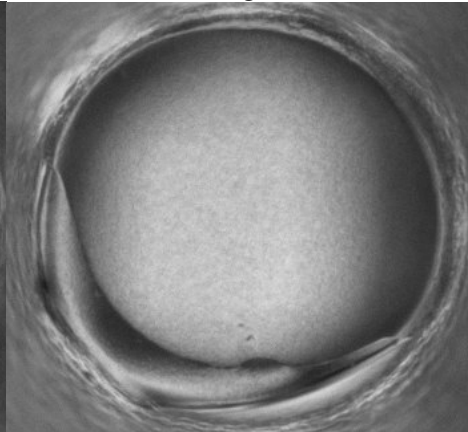
There are many types of ppt, the following are just a few of the most common

A) Uniformed

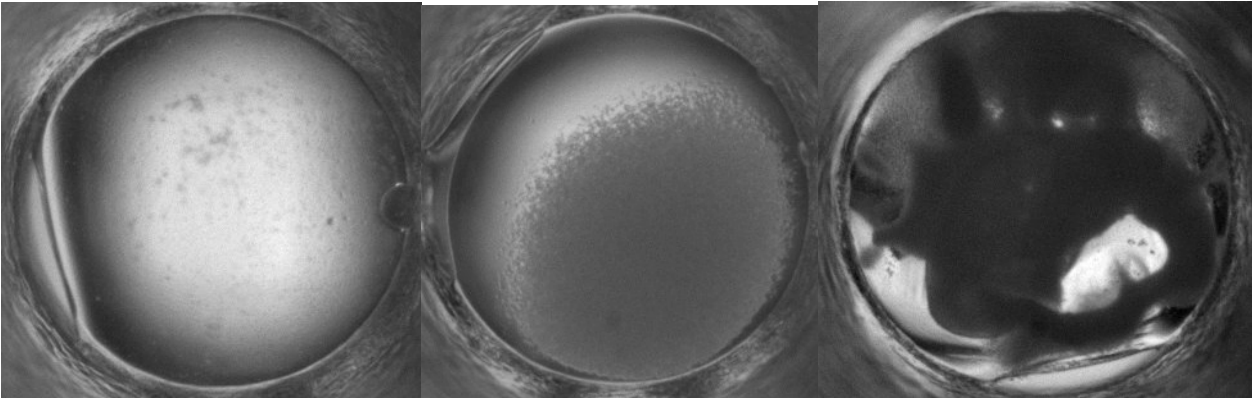
Dark



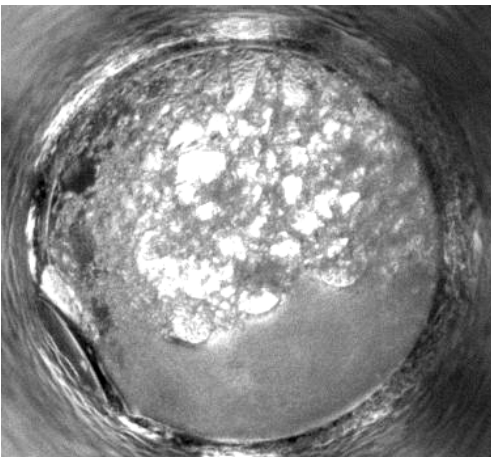
Light



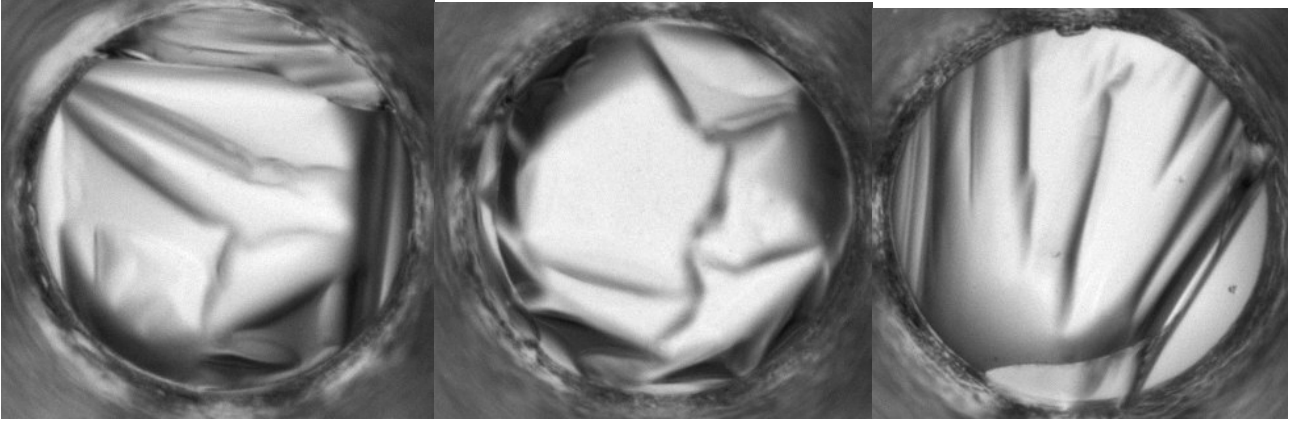
B) Not Uniform:



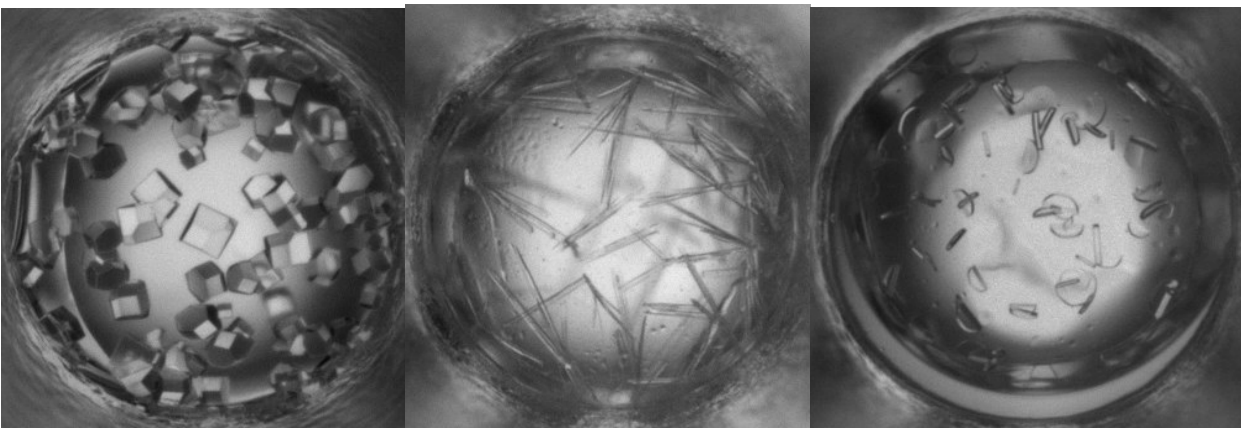
C) Patterned:



4. Skin:

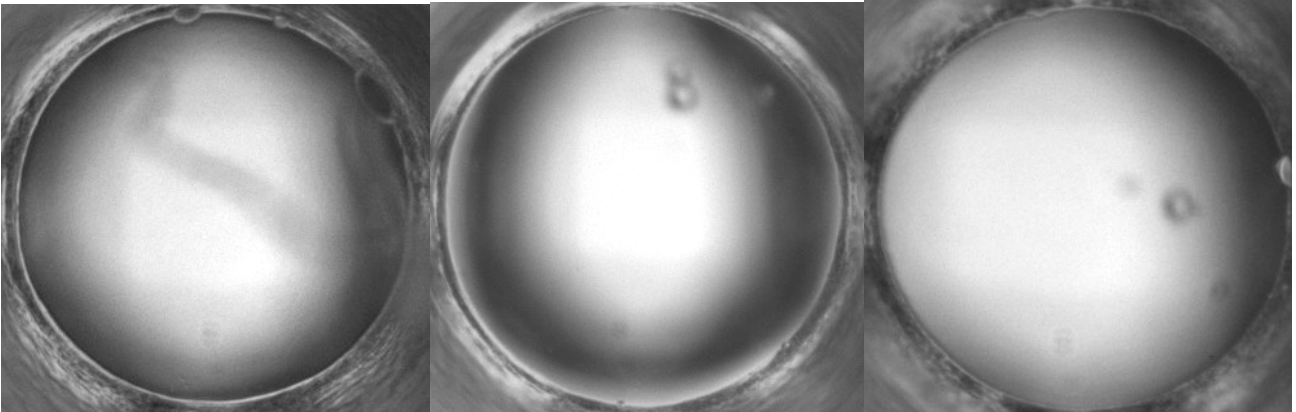


5. Crystals:



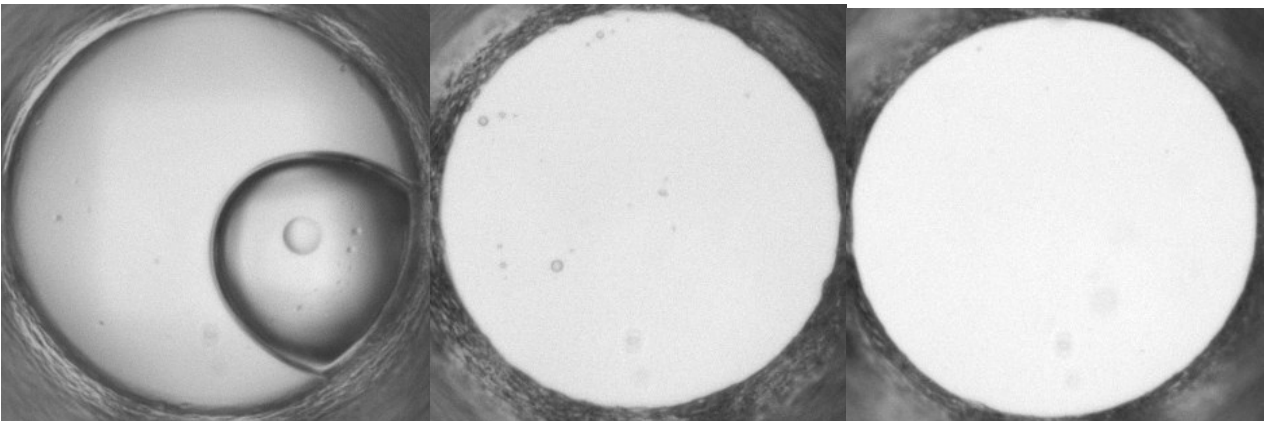
6. Garbage:

A) Out of Focus:

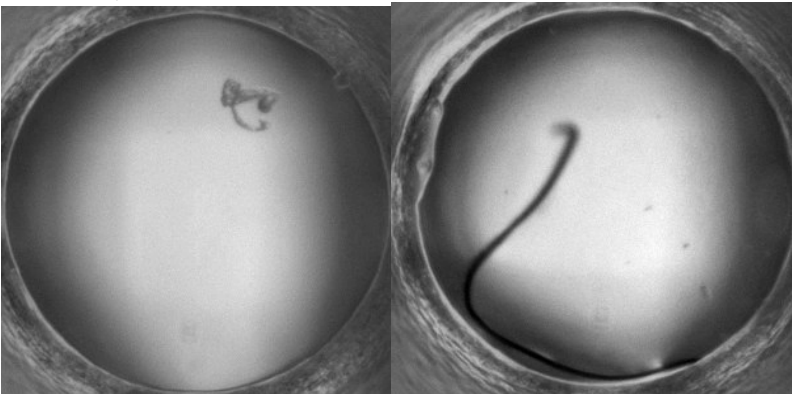


B) Missing Solution:
Some Solution

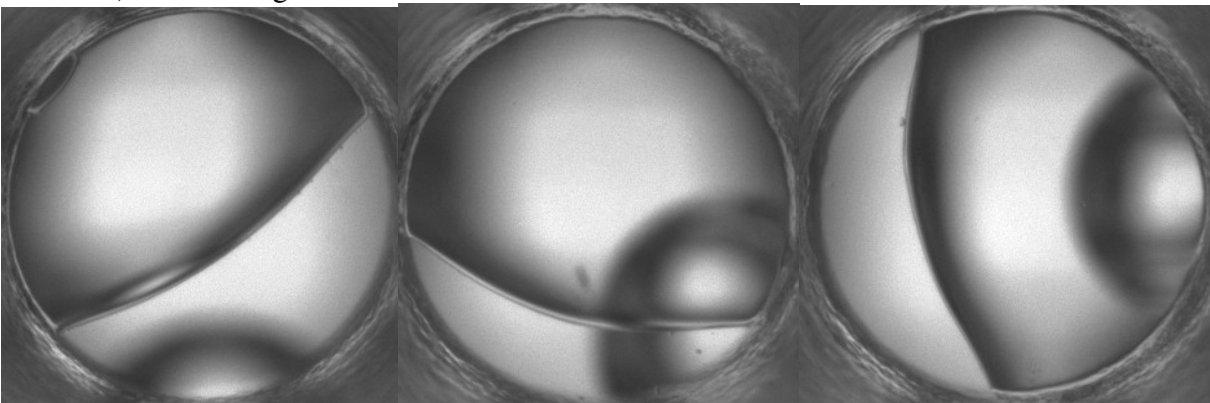
No Solution



C) Debris:



D) Didn't merge:



7. Unsure:

Use this category when you just aren't sure what to call it.
Or if you can't make up your mind as to whether it belongs in one category or another.

