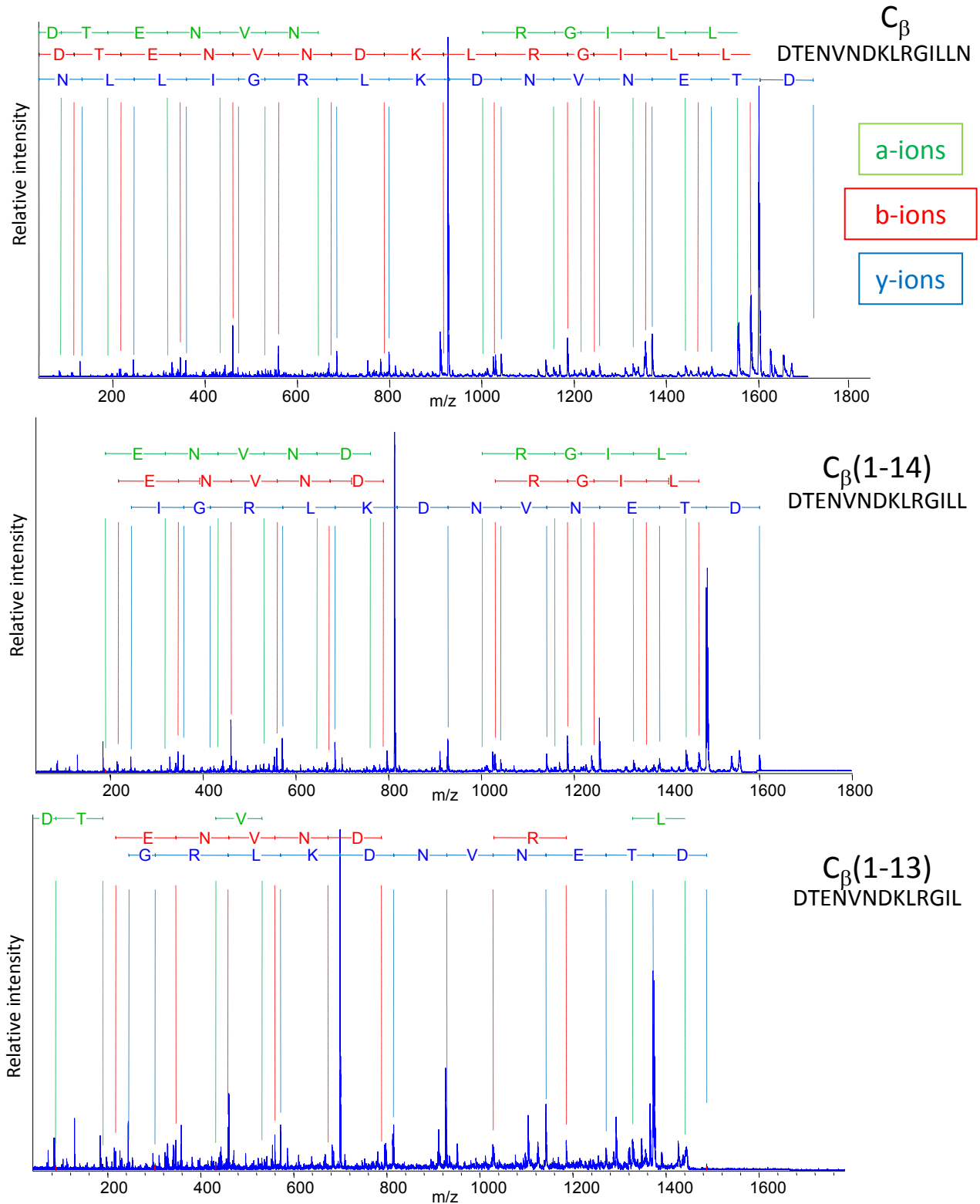


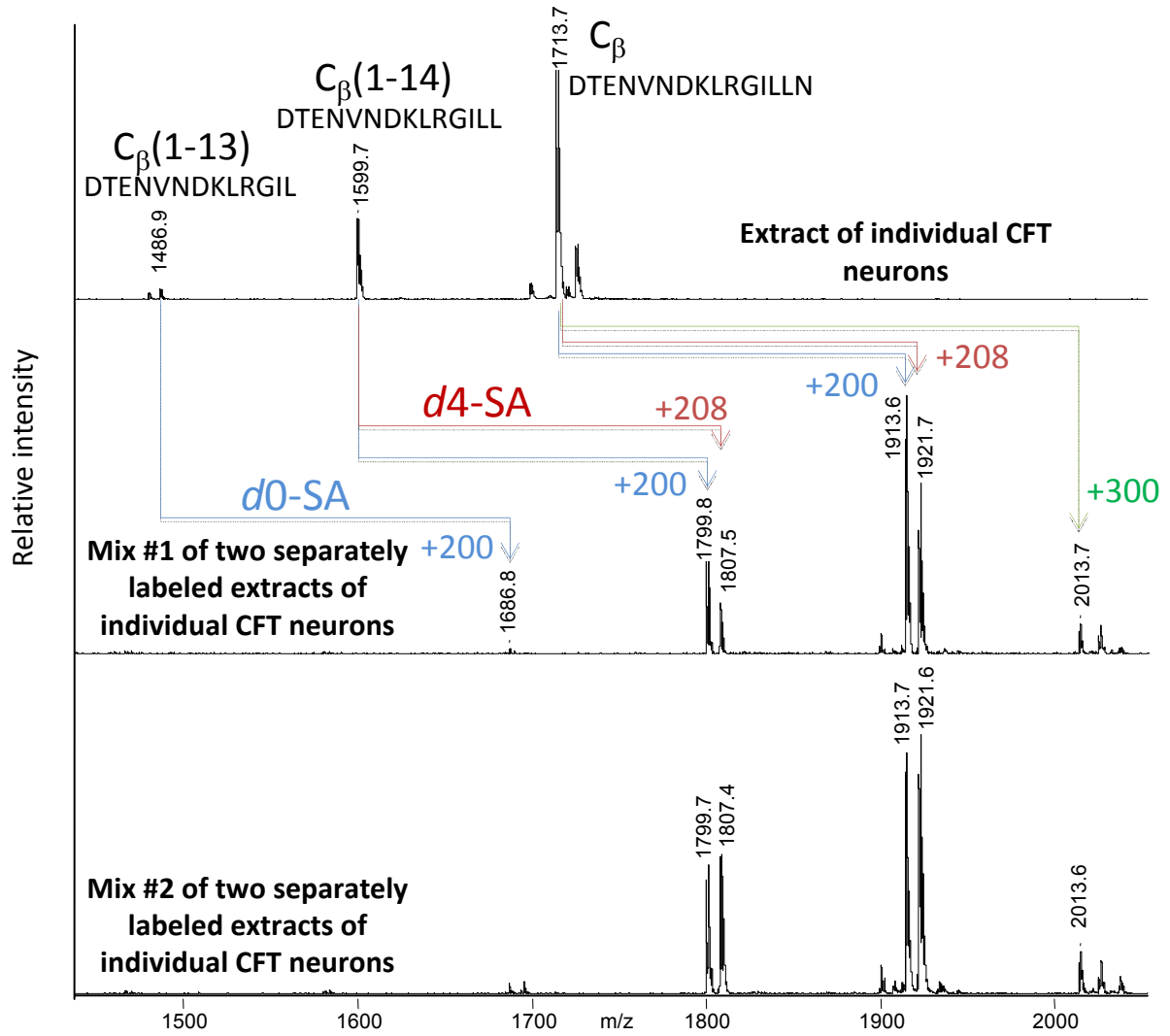
# Quantitative measurements of cell-cell signaling peptides with single cell MALDI MS

Supporting Figures

*S. S. Rubakhin and J.V. Sweedler*



**Supporting Figure 1.** C $\beta$  peptide and related peptides MS/MS sequencing. Aplysia insulin prohormone sequence: MSKFLQSHS ANACLLTLL TLASNLDSL ANFEHSCNGY MRPHPRGLCG EDLHVIIISNL CSSLGGNRRF LAKYMVKR **DT ENVNDKLRGI LLN** KKEAFSY LTKREASGS I TCECCFNQCR IFELAQYCRL PDHFFSRISR TGRSNSGHAQ LEDNFS



**Supporting Figure 2.** Relative quantitation of endogenous peptides in individual neurons using the succinic anhydride approach.