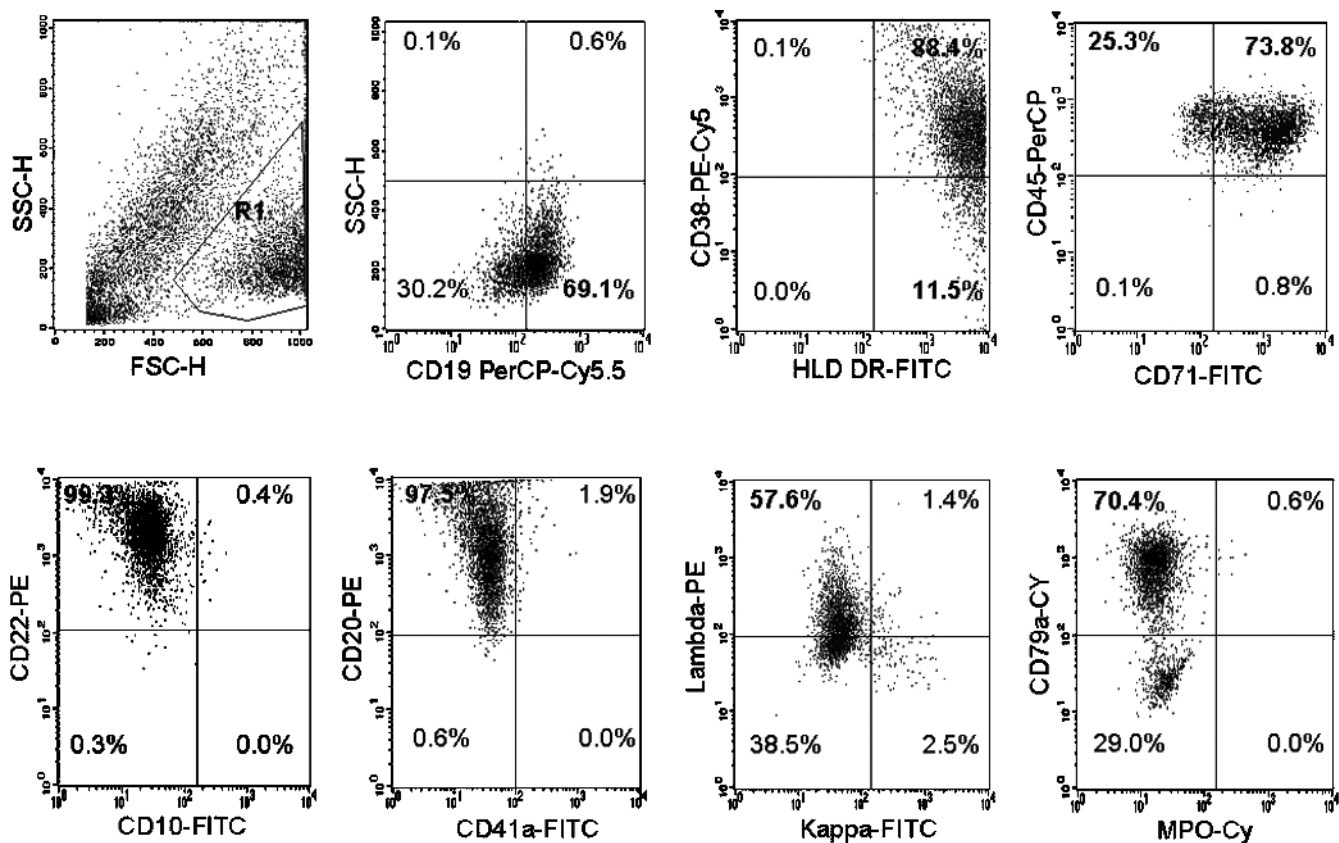


**Table W1.** Analysis of PL104 Cell Surface Antigens.

	Result
CD2	Negative
CD3	Negative
CD4	Negative
CD5	Negative
CD7	Negative
CD8	Negative
CD10	Negative
CD11b	Negative
CD13	Negative
CD14	Negative
CD15	Negative
CD16	Negative
CD19	<b>Positive</b>
CD20	<b>Positive</b>
CD22	<b>Positive</b>
CD33	Negative
CD34	Negative
CD38	<b>Positive</b>
CD41a	Negative
CD45	<b>Positive</b>
CD56	Negative
CD64	Negative
CD71	<b>Positive</b>
CD79a	<b>Positive</b>
CD117	Negative
MPO	Negative
HLA DR	<b>Positive</b>
λ chain	<b>Positive</b>
κ chain	Negative

Immunophenotypic profile of PL104 cells assessed by flow cytometry. A positive result was considered when the comparison of the staining pattern of a certain antibody (defined as a percentage) was 20% over the corresponding percentage of the isotypic control.

Data in **boldface** emphasis correspond to  $P < .001$ .



**Figure W1.** PL104 cells correspond to mature B monoclonal lymphocytes. Dot pot graphics showing positive CD expression on PL104 assessed by flow cytometry.