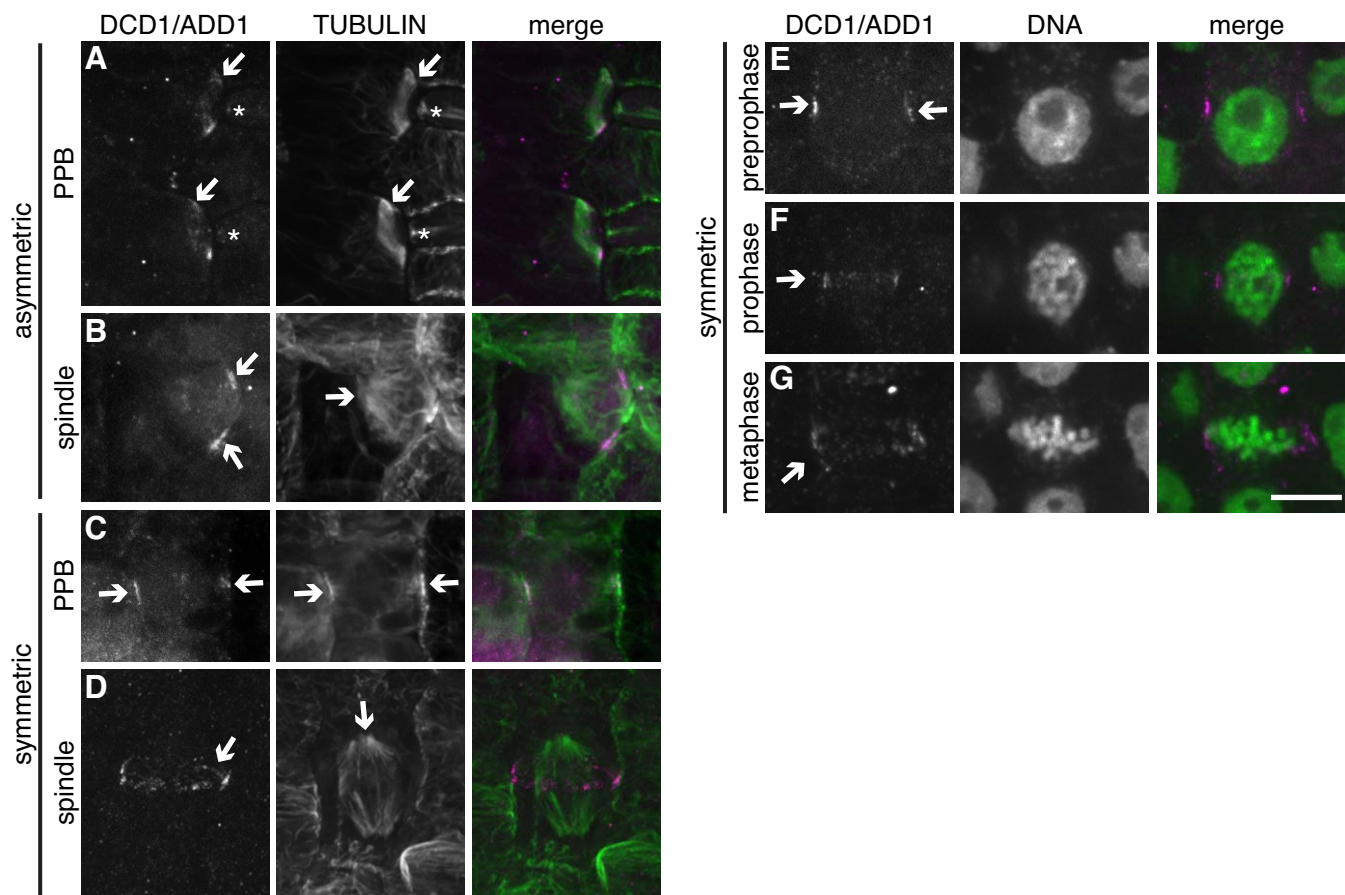


Supplemental Figure 1. DCD1/ADD1 localizes to the interphase cortical rings in GMCs, but is not needed for their formation.

A-B) Microtubules were visualized by tubulin indirect immunofluorescence (green) and DNA was stained with propidium iodide (false colored blue). A) In control GMCs, a cortical microtubule ring is present during interphase (arrow). The GMC is adjacent to a SMC with a PPB (asterisk). B) In *add1(RNAi) dcd1(RNAi)* GMCs, the cortical microtubule ring is present during interphase (arrow). The GMC is adjacent to a SMC in prophase lacking a PPB (asterisk). C) DCD1/ADD1 (middle panel, red in merged image) was detected by indirect immunofluorescence and DNA (left panel, blue in merged image) was stained with SYTOX blue. DCD1/ADD1 localizes to the interphase cortical microtubule ring in the GMC (arrow) as well as to the cortical division site in the SMC (asterisk).



Supplemental Figure 2. **Localization of DCD1/ADD1 in wild-type (B73) dividing maize leaf epidermal cells.** A-D) DCD1/ADD1 (left panel, magenta in the merged image) and tubulin (middle panel, green in the merged image) were detected by indirect immunofluorescence. The merge is shown in the right panel. A) Surface view of SMCs. DCD1/ADD1 antibody highlights cortical rings (left panel, arrows and asterisks) that are coincident with PBBs (middle panel, arrows) and interphase cortical bands in adjacent GMCs (middle panel, asterisks). B) Mid-plane view of an SMC with an early spindle (middle panel, arrow) and no PPB. DCD1/ADD1 antibody highlights the cortical division site (left panel, arrows). C) Mid-plane view of a symmetrically dividing cell. DCD1/ADD1 antibody highlights cortical rings (left panel, arrows) that are coincident with PBBs (middle panel, arrows). D) Z-projection of a symmetrically dividing cell. DCD1/ADD1 antibody highlights the cortical division site (left panel, arrow), while tubulin staining of the same cell shows a spindle (middle panel, arrow). E-G) DCD1/ADD1 were visualized by tubulin indirect immunofluorescence (left panel, magenta in the merged image) and DNA was stained with propidium iodide (false-colored green in the merged image, middle panel). The merge is shown in the right panel. E) Mid-plane view of a preprophase cell as judged by the lack of condensed chromosomes. DCD1/ADD1 are localized to a cortical ring (left panel, arrows). F) Surface-plane view of a prophase cell as judged by condensed chromosomes. DCD1/ADD1 are localized to a cortical ring (left panel, arrow). G) Z projection of metaphase cell as judged by the chromosome arrangement. DCD1/ADD1 are localized to a cortical ring (left panel, arrow). Scale bar is 10 μ m.