

Supporting Information

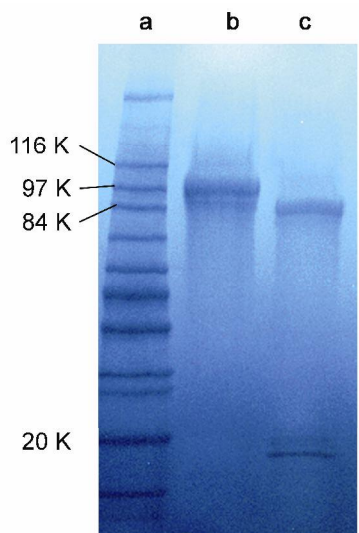


Figure S1 Copper stained SDS-PAGE gel of thrombin cleavage of apoCaM-ELP180. Lanes: a) Molecular weight markers; b) apoCaM-ELP180 (MW: 90.5 kDa) and c) apoCaM-ELP180 after cleavage with thrombin. Note that in lane c, two major bands are observed, corresponding to apoCaM (16.7 kDa) and ELP (73.8 kDa).

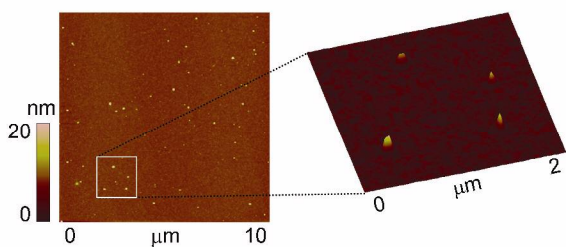


Figure S2 Tapping mode AFM image in air of a 1 μM solution of apoCaM-ELP60 in water that was adsorbed onto a PAH monolayer on silicon and freeze-dried prior to imaging. The inset is a 2x2 μm magnified view.

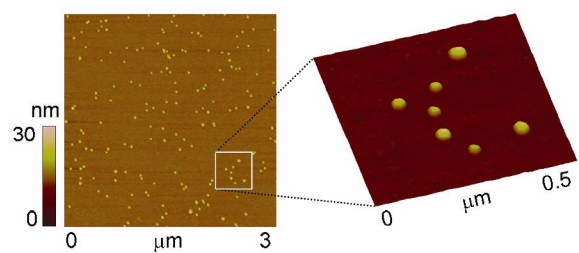


Figure S3. Tapping mode AFM image in air of 10 nm diameter spherical gold nanoparticles (Ted Pella Inc., Redding, CA) at an imaging speed of 2 $\mu\text{m/s}$. The inset is a 0.5x 0.5 μm magnified view.