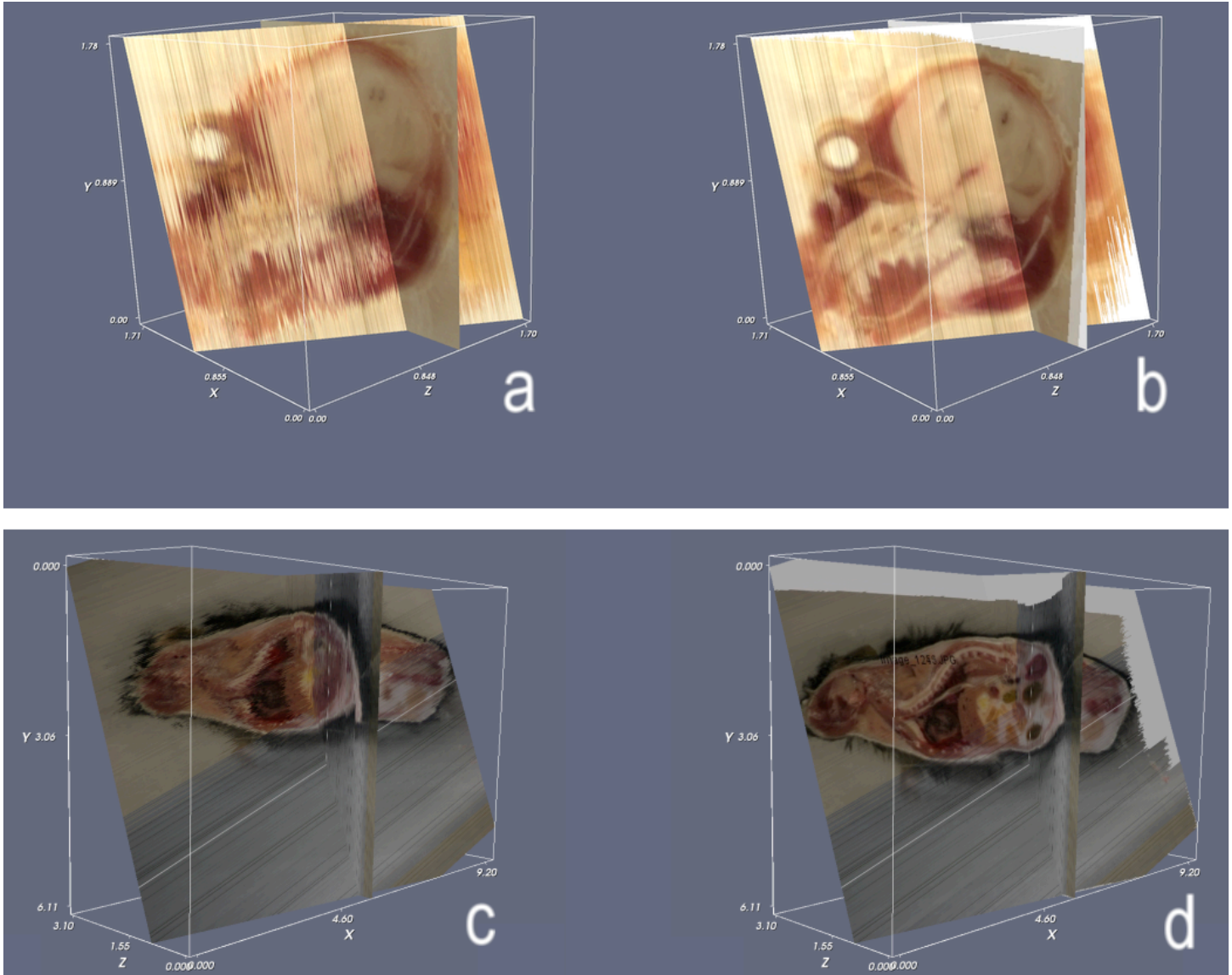


## Supplementary Figure 2



Reconstructed blockface volumes for a mouse head and whole mouse. The mouse head was sectioned coronally in an anterior to posterior fashion. **(a)** The volume before reconstruction. **(b)** The volume after reconstruction. Substructures in the brain are more clearly resolved in the reconstructed volume. Features of interest include the left eye of the mouse, the jaw, and corpus callosum and ventricles in the brain. **(c)** and **(d)** The unreconstructed and reconstructed volumes for the whole mouse, respectively. Gross anatomic features are readily apparent in the reconstructed volume, including: the spine, the liver, the stomach, the heart, and the brain. The X, Y, and Z axes are labeled to provide physical space dimensions and spatial cues for the orientation of the blockface volume (units in centimeters).