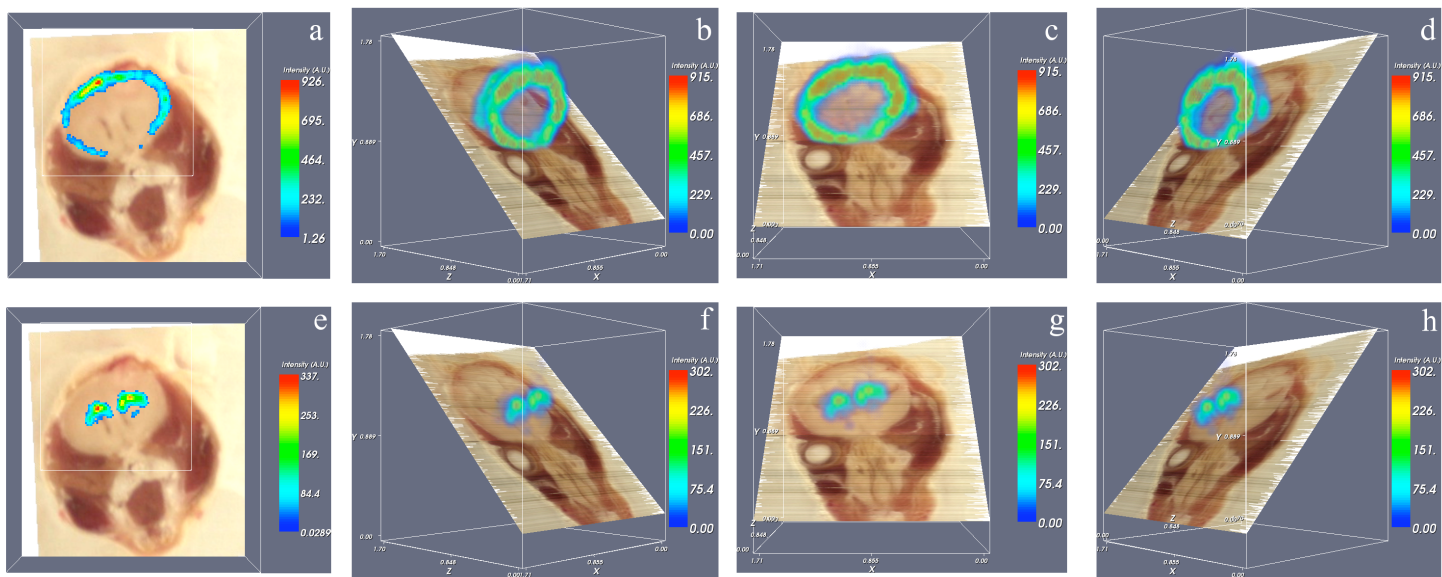


Supplementary Figure 4



Spatially resolved volumetric MALDI IMS in a mouse head. **(a)** and **(e)** Ion images for m/z 5826 and 14182, respectively, overlaid onto the corresponding blockface image. **(b-d)** and **(f-h)** Three MALDI IMS ion images concatenated into a volume and rendered along an oblique image plane through the mouse head. The oblique plane is provide to demonstrate the spatial extent of the mouse head and also the volumetric MALDI IMS data. The X, Y, and Z axes are labeled in centimeters.