

Figure 1: MS/MS spectrum of nitrated peptide obtained from *in vivo* LDL⁻ apoB-100 protein. Mass of peptides observed is in red upon ionization and annotated on the chart. Spectra were obtained from bioworks browser.

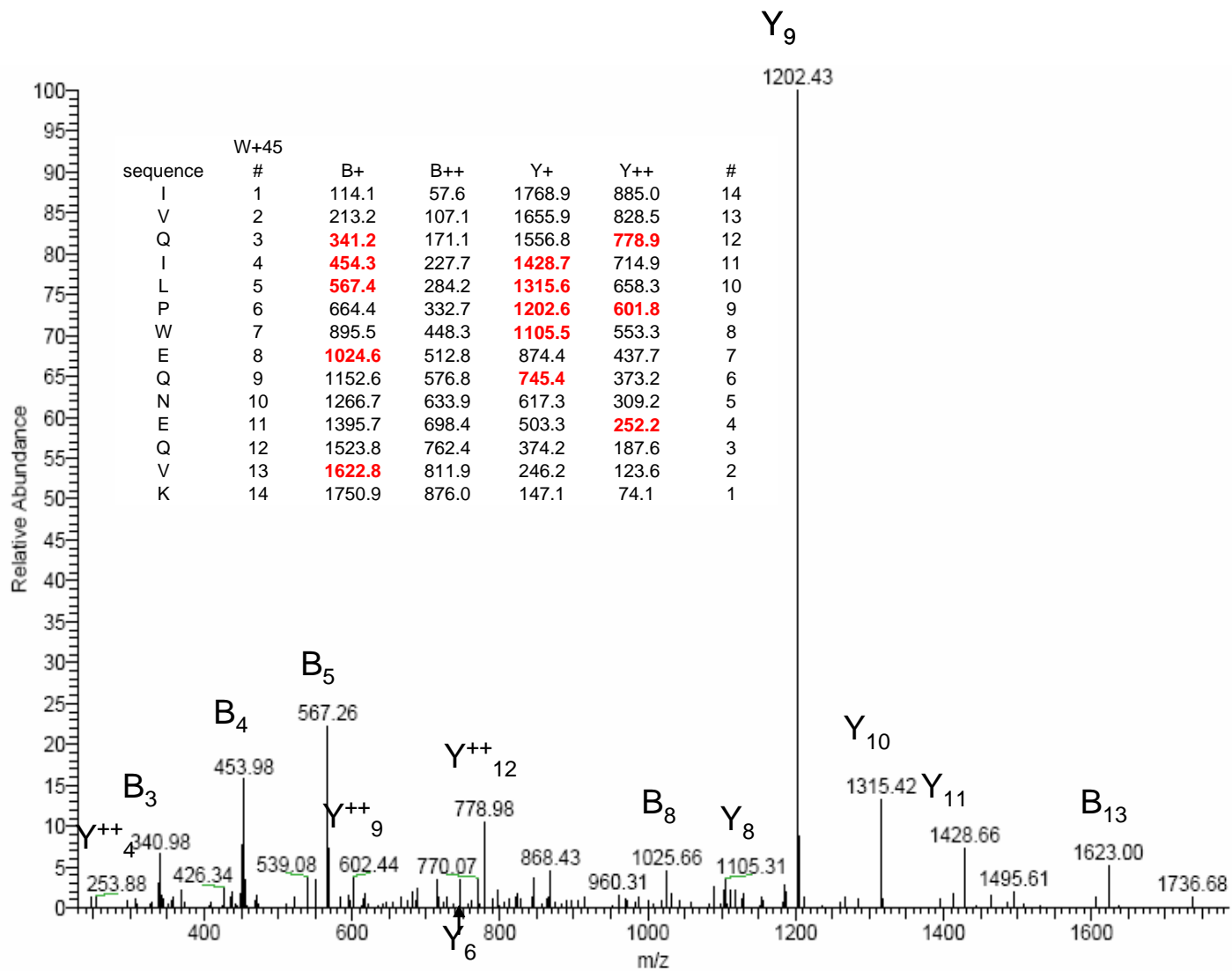


Figure 2: MS/MS spectrum of nitrated peptide obtained from *in vivo* LDL⁻ apoB-100 protein. Mass of peptides observed is in red upon ionization and annotated on the chart. Spectra were obtained from bioworks browser.

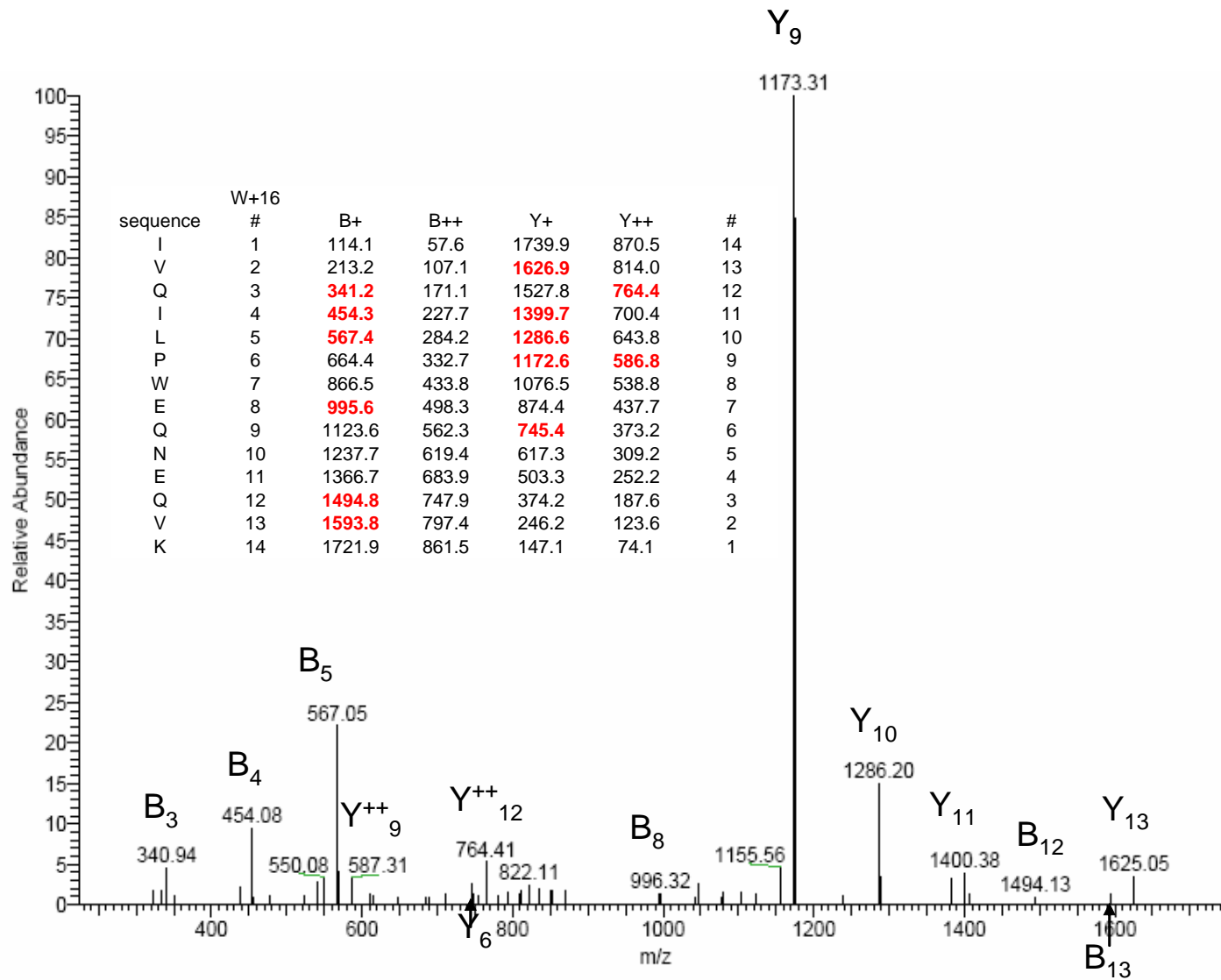


Figure 3: MS/MS spectrum of nitrated peptide obtained from *in vivo* LDL⁻ apoB-100 protein. Mass of peptides observed is in red upon ionization and annotated on the chart. Spectra were obtained from bioworks browser.

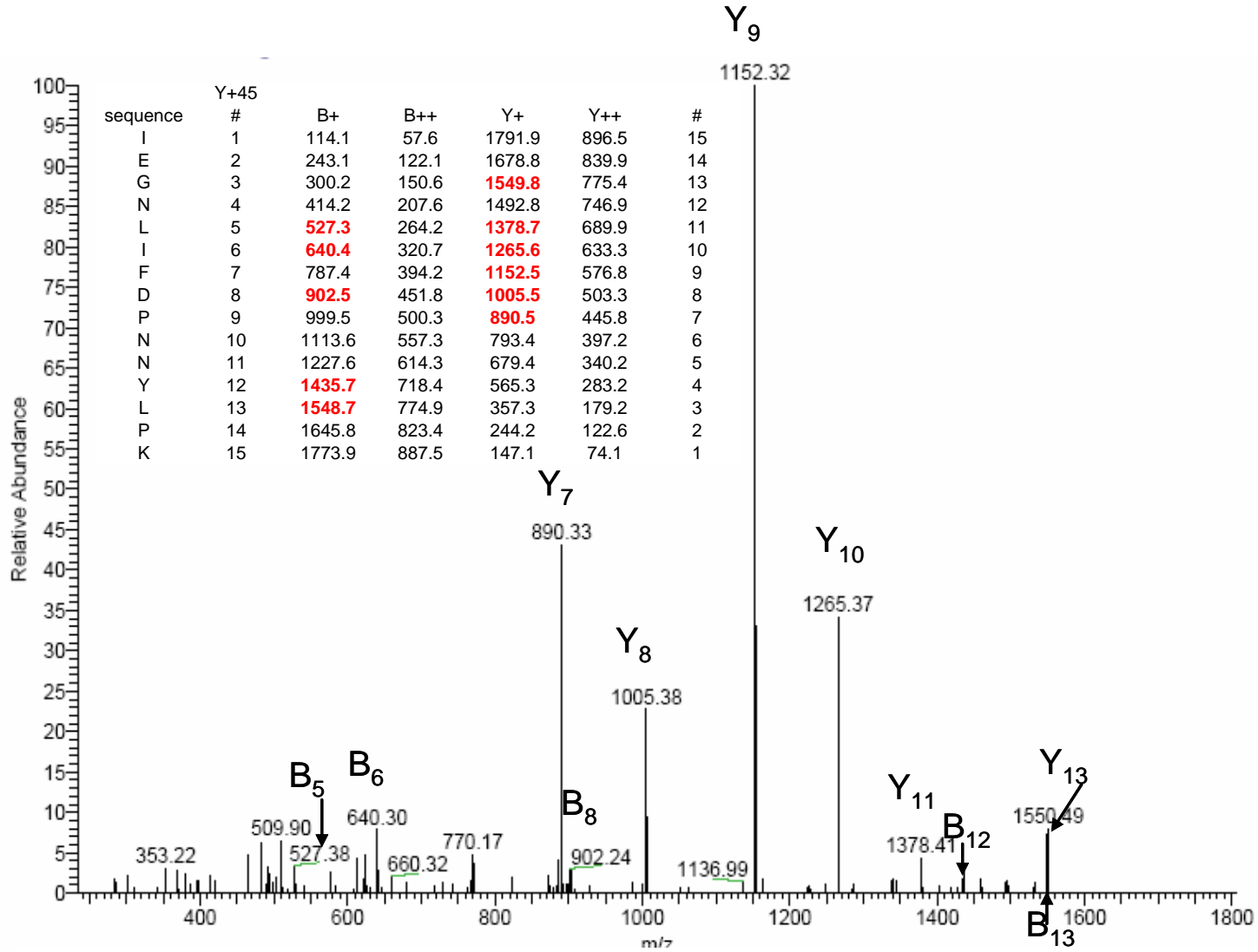


Figure 4: MS/MS spectrum of nitrated peptide obtained from *in vivo* LDL⁻ apoB-100 protein. Mass of peptides observed is in red upon ionization and annotated on the chart. Spectra were obtained from bioworks browser.

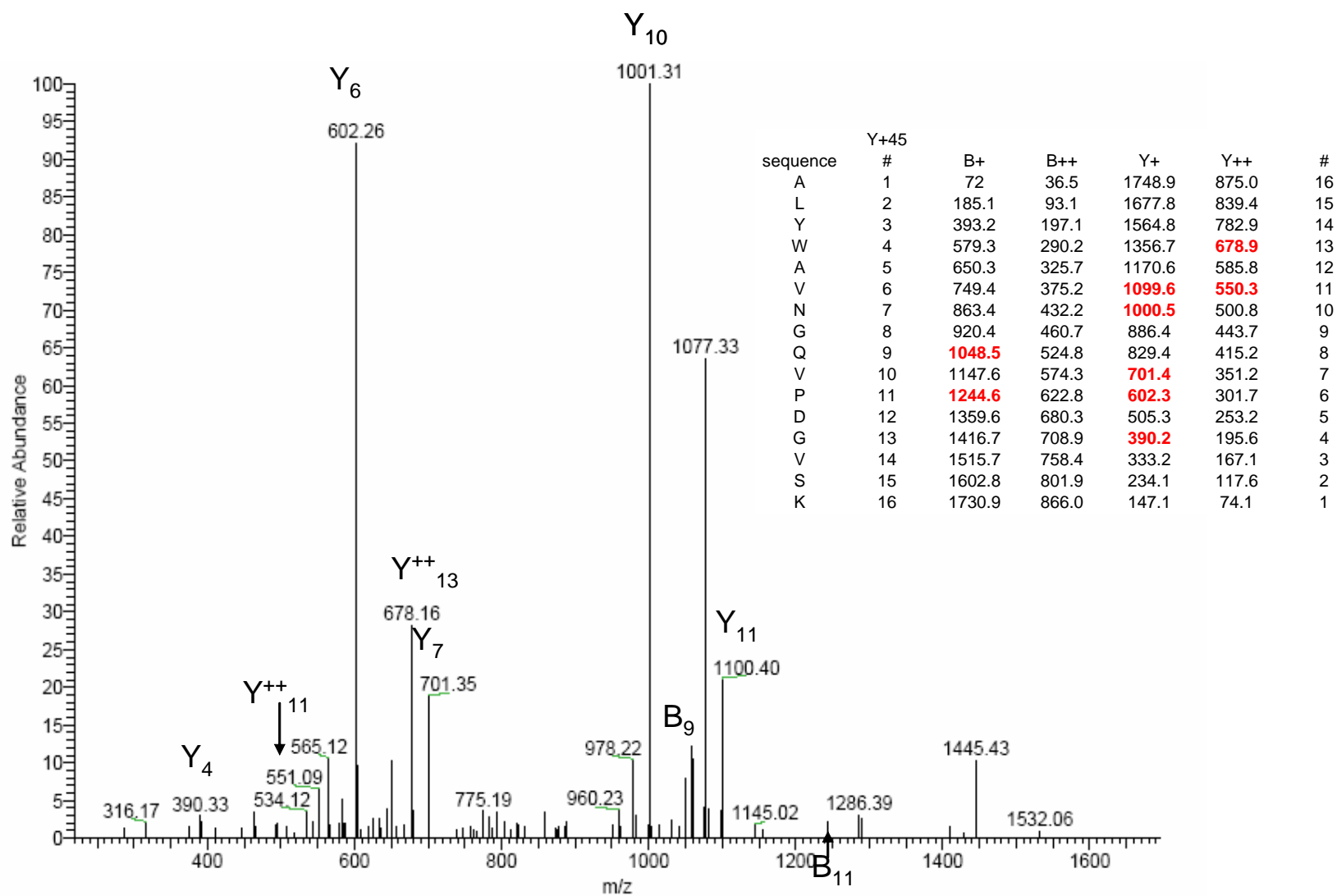


Figure 5: MS/MS spectrum of nitrated peptide obtained from *in vivo* LDL⁻ apoB-100 protein. Mass of peptides observed is in red upon ionization and annotated on the chart. Spectra were obtained from bioworks browser.

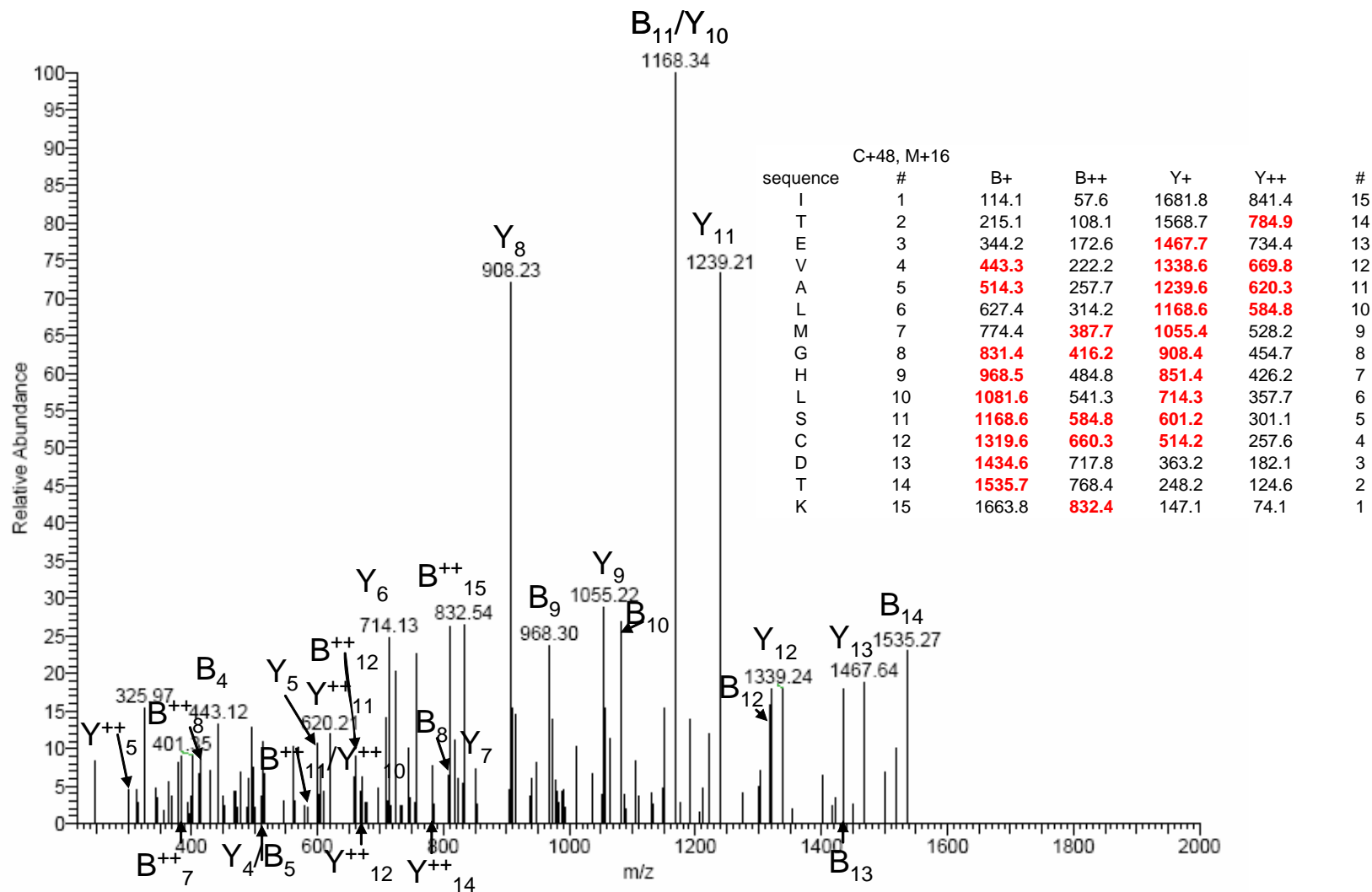


Figure 6: MS/MS spectrum of nitrated peptide obtained from *in vivo* LDL⁻ apoB-100 protein. Mass of peptides observed is in red upon ionization and annotated on the chart. Spectra were obtained from bioworks browser.

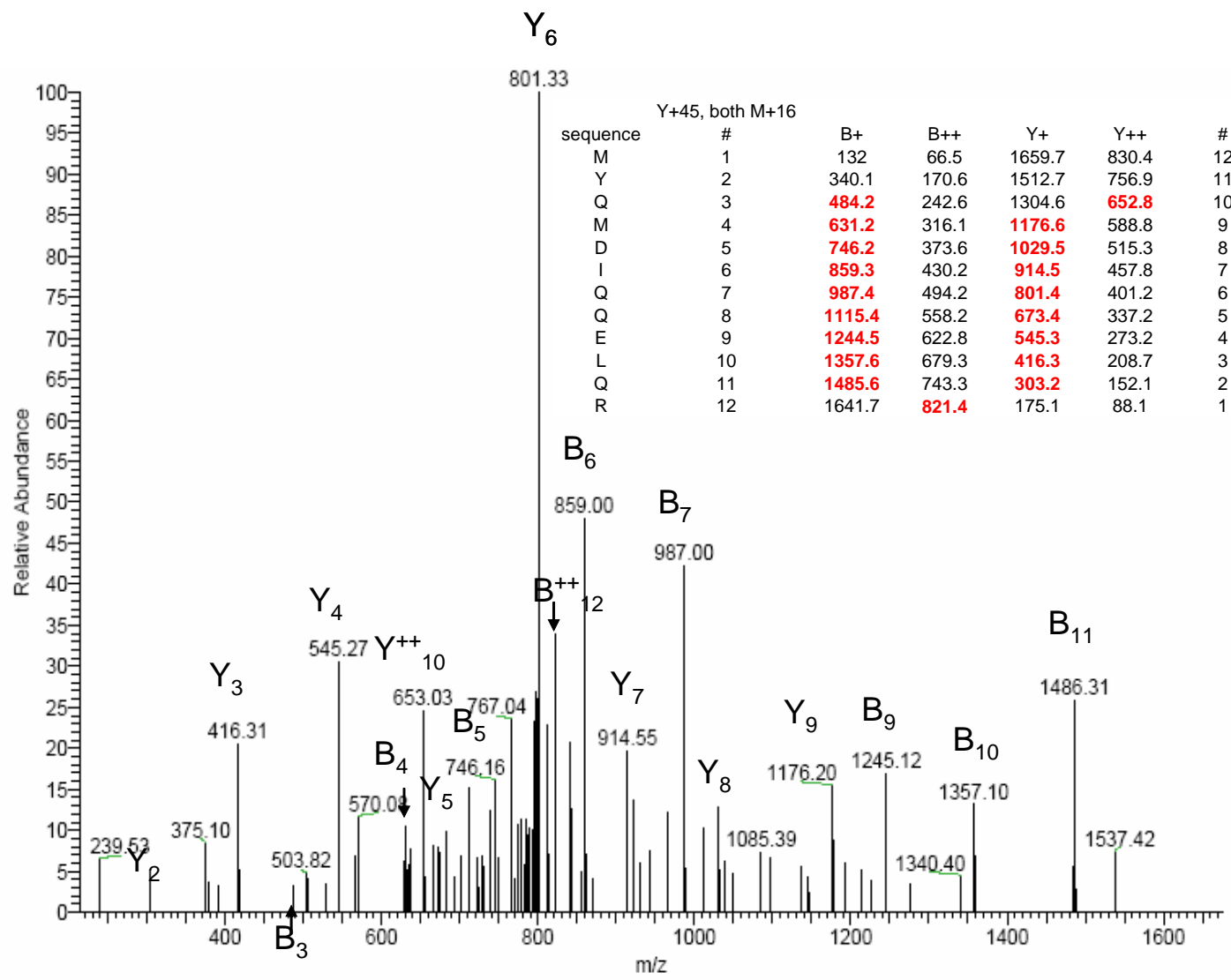


Figure 7: MS/MS spectrum of nitrated peptide obtained from *in vivo* LDL apoB-100 protein. Mass of peptides observed is in red upon ionization and annotated on the chart. Spectra were obtained from bioworks browser.

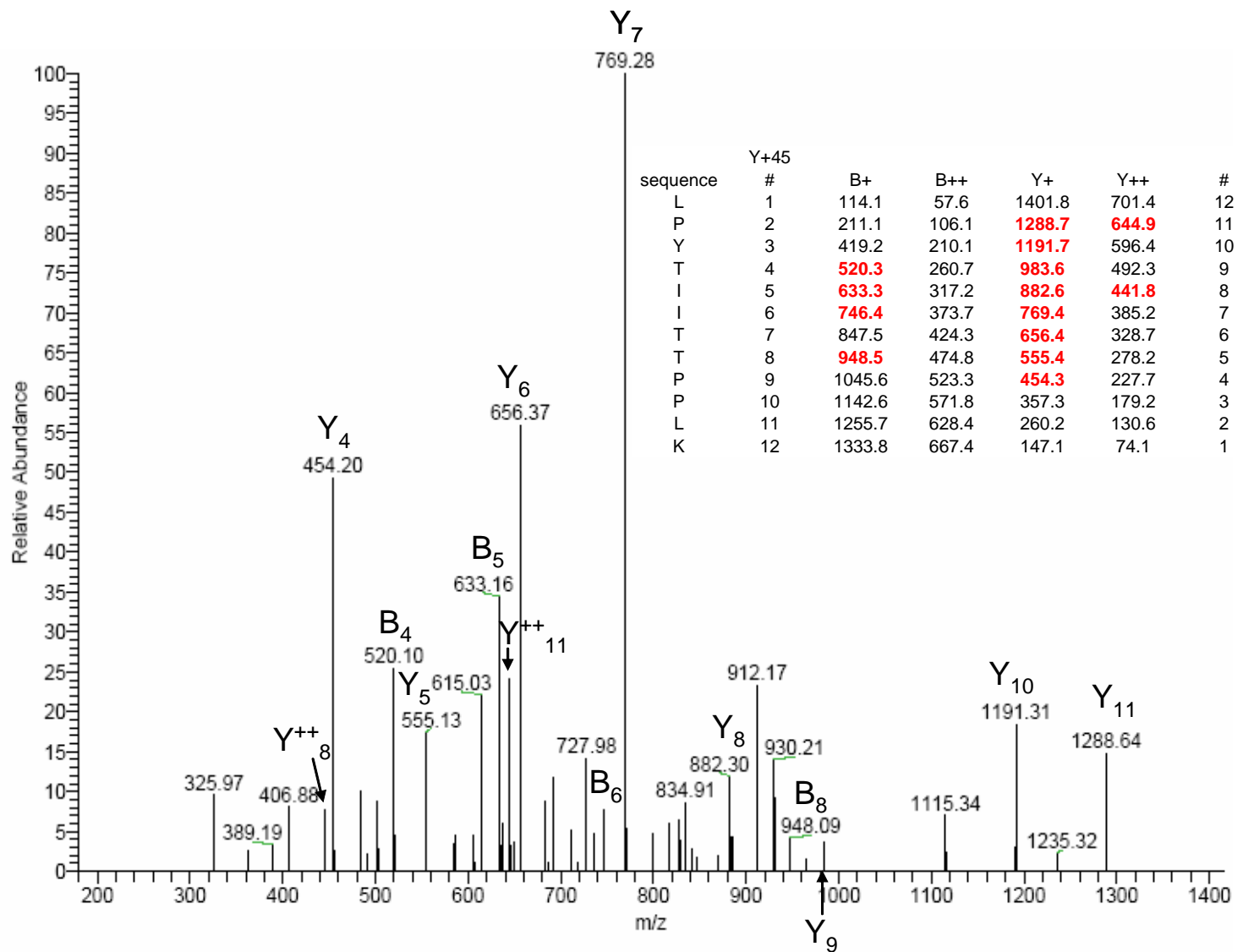


Figure 8: MS/MS spectrum of nitrated peptide obtained from *in vivo* LDL⁻ apoB-100 protein. Mass of peptides observed is in red upon ionization and annotated on the chart. Spectra were obtained from bioworks browser.

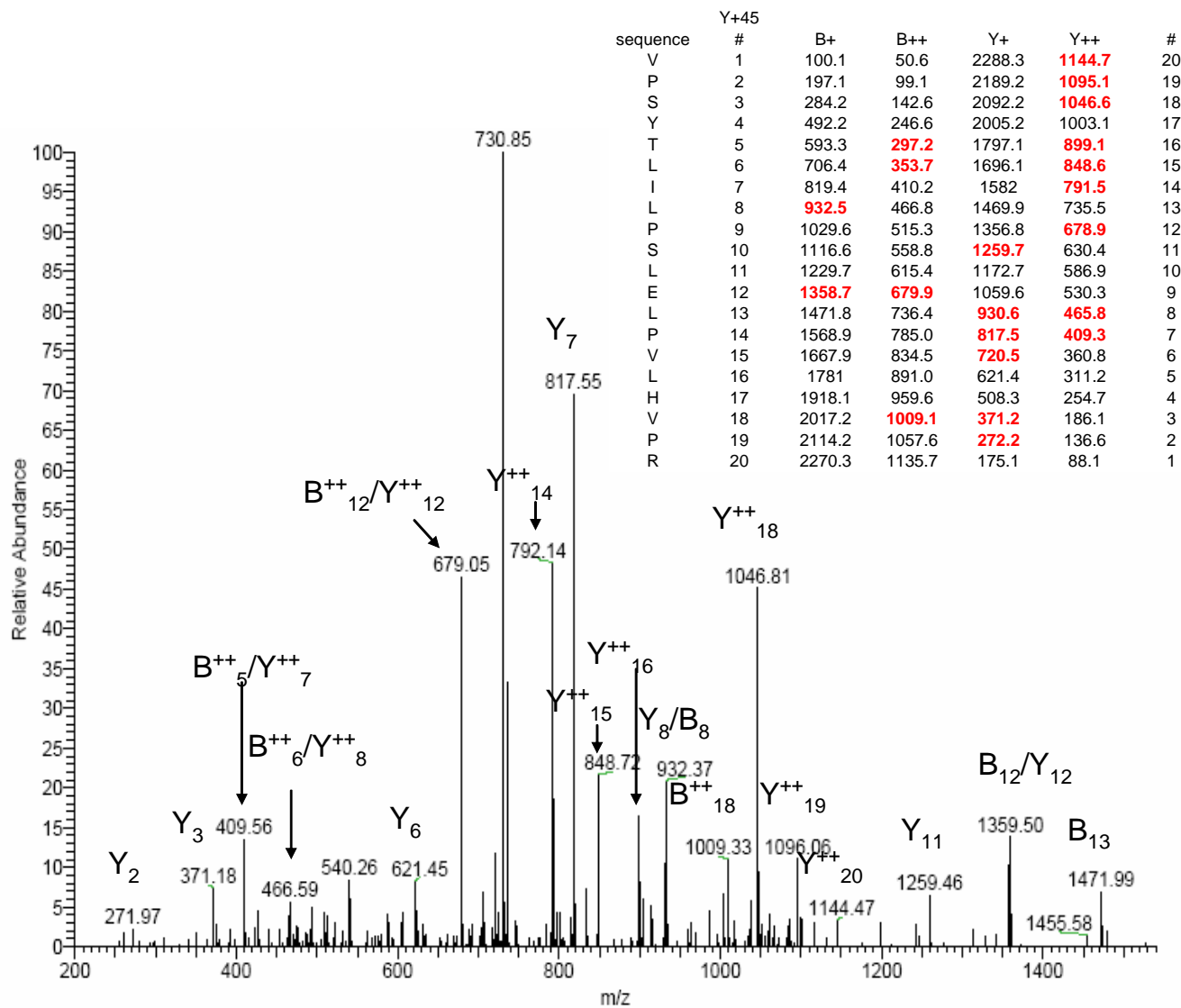


Figure 9: MS/MS spectrum of nitrated peptide obtained from *in vivo* LDL⁻ apoB-100 protein. Mass of peptides observed is in red upon ionization and annotated on the chart. Spectra were obtained from bioworks browser.

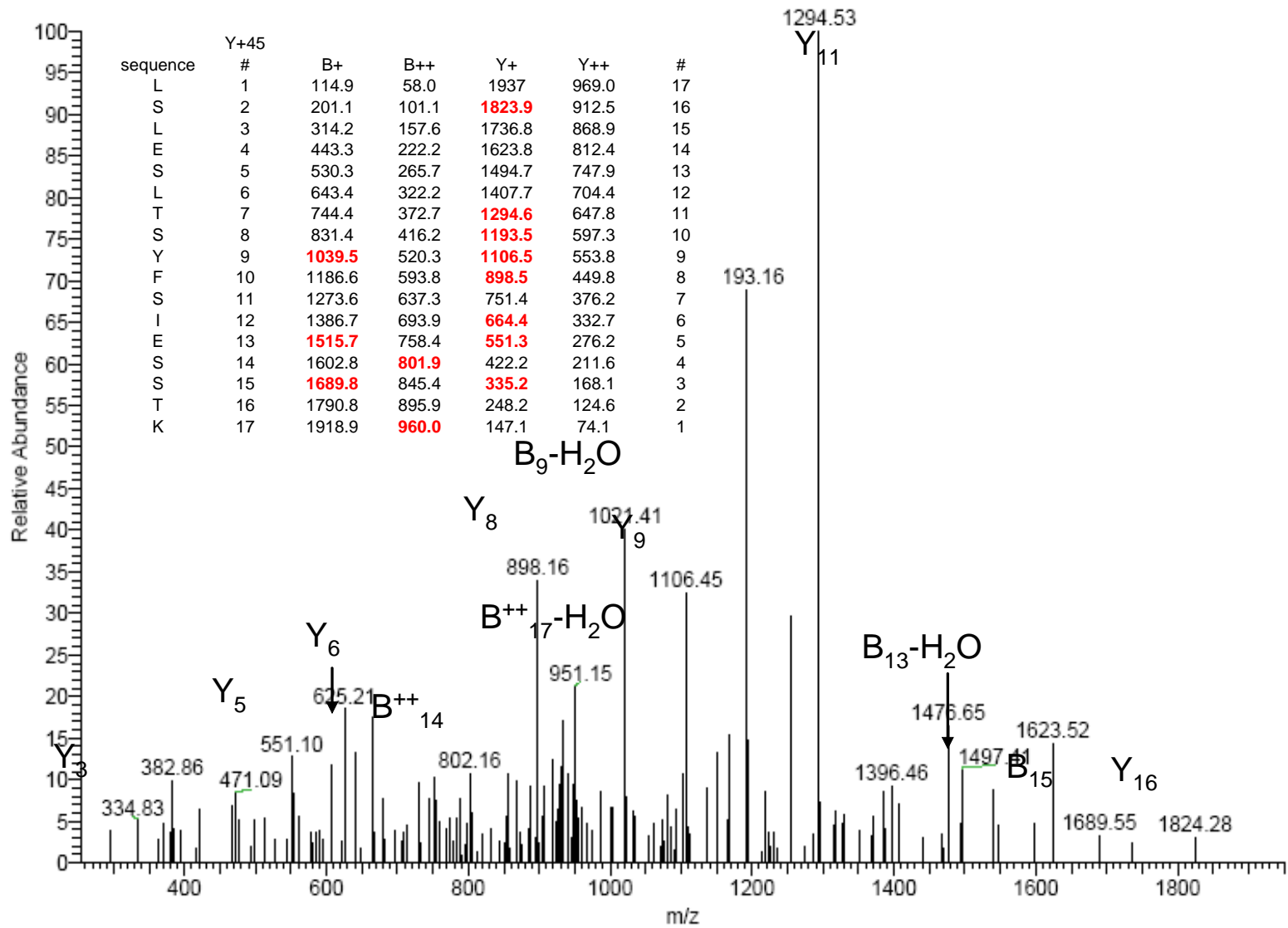


Figure 10: MS/MS spectrum of nitrated peptide obtained from *in vivo* LDL⁻ apoB-100 protein. Mass of peptides observed is in red upon ionization and annotated on the chart. Spectra were obtained from bioworks browser.

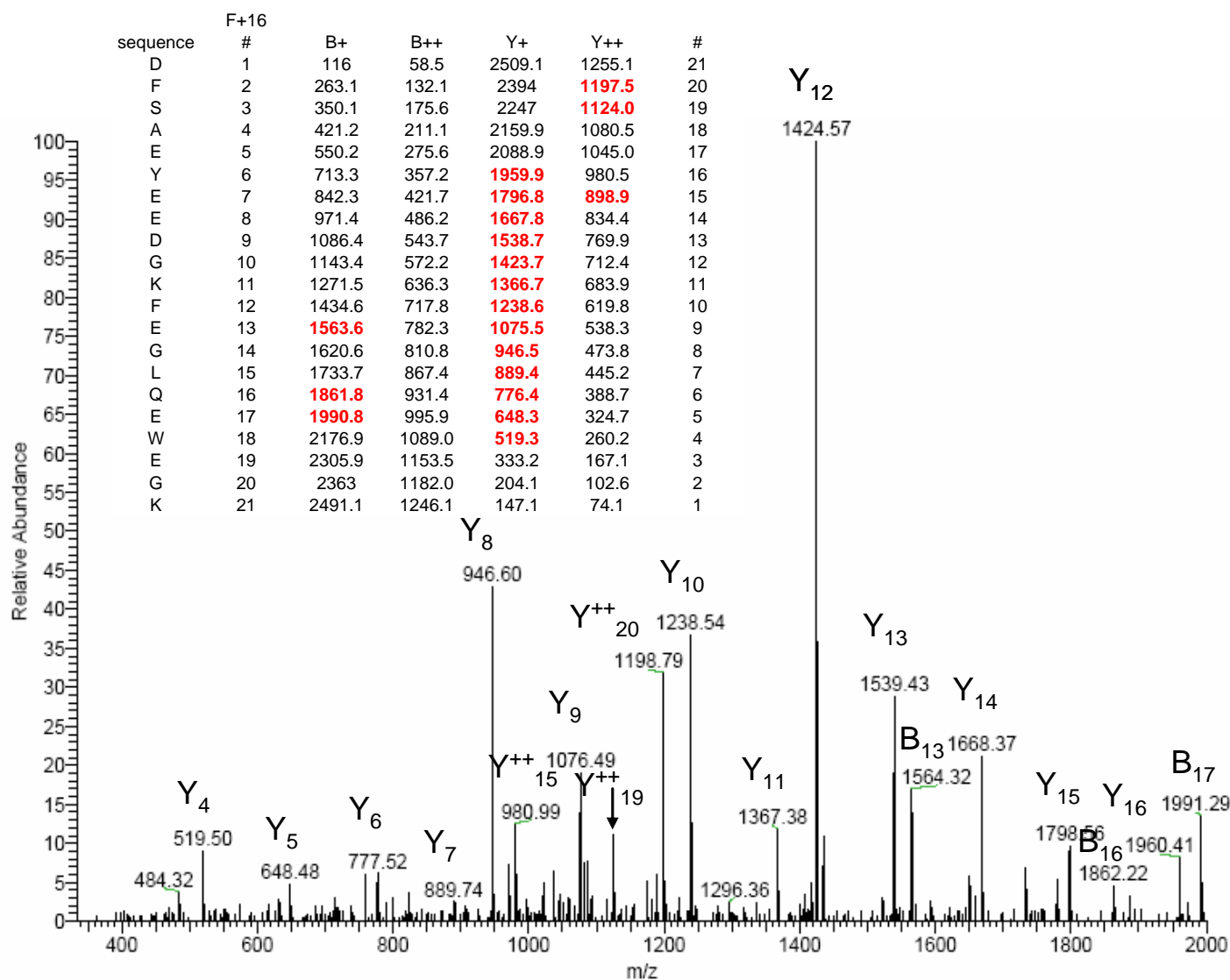


Figure 11: MS/MS spectrum of nitrated peptide obtained from *in vivo* LDL⁻ apoB-100 protein. Mass of peptides observed is in red upon ionization and annotated on the chart. Spectra were obtained from bioworks browser.

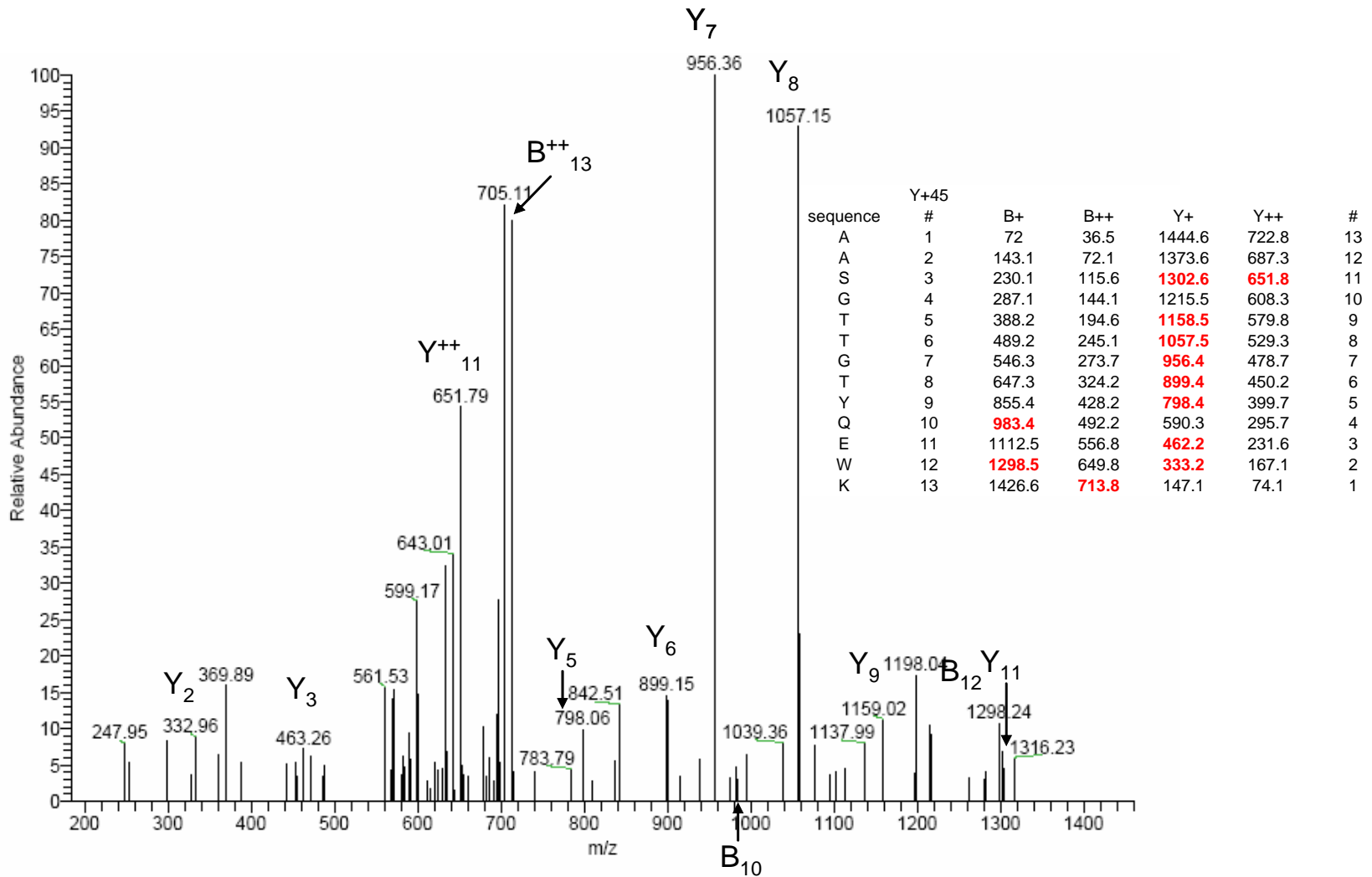


Figure 12: MS/MS spectrum of nitrated peptide obtained from *in vivo* LDL⁻ apoB-100 protein. Mass of peptides observed is in red upon ionization and annotated on the chart. Spectra were obtained from bioworks browser.

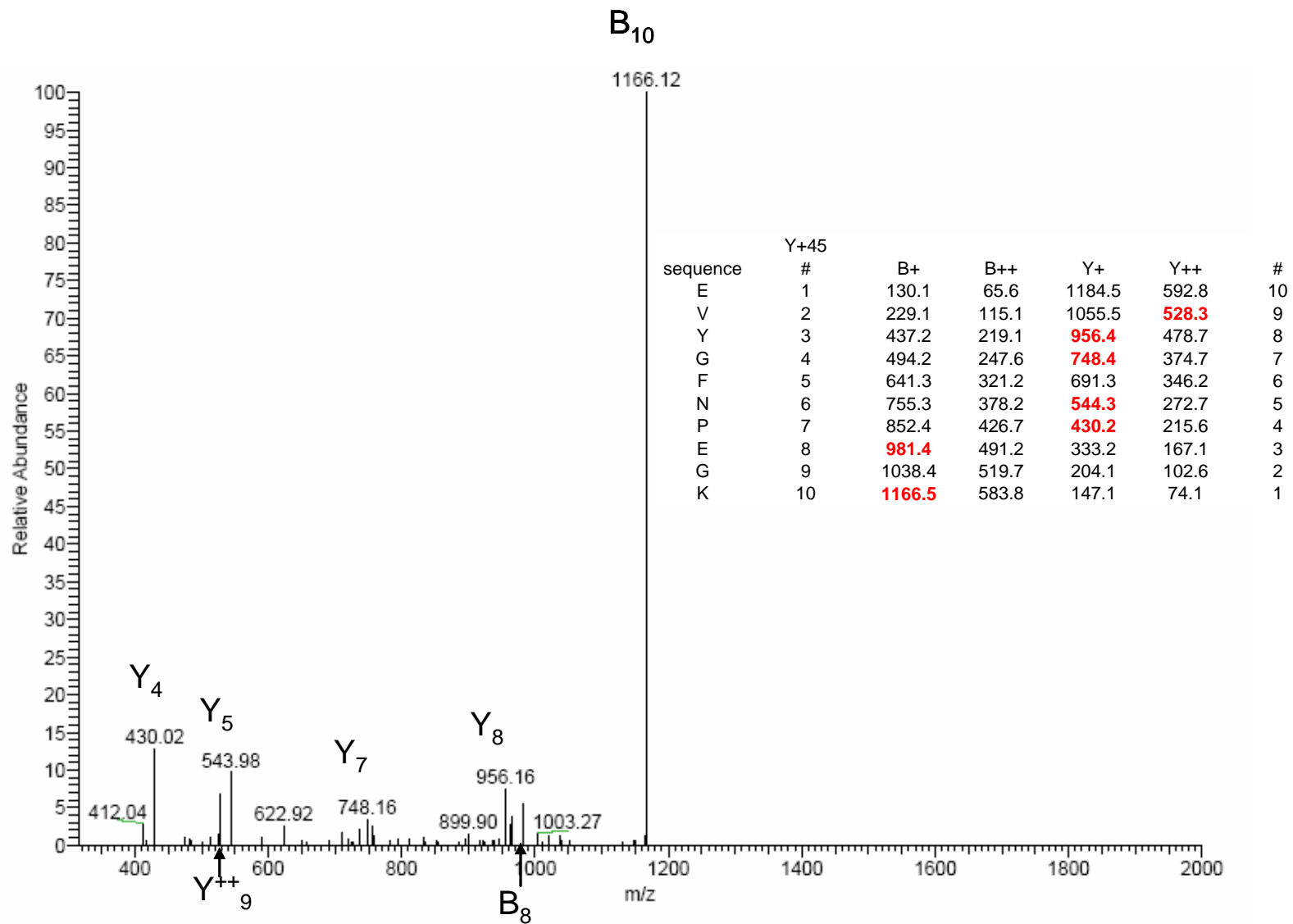


Figure 13: MS/MS spectrum of nitrated peptide obtained from 100 μM ONOO⁻-treated LDL apoB-100 protein. Mass of peptides observed is in red upon ionization and annotated on the chart. Spectra were obtained from bioworks browser.

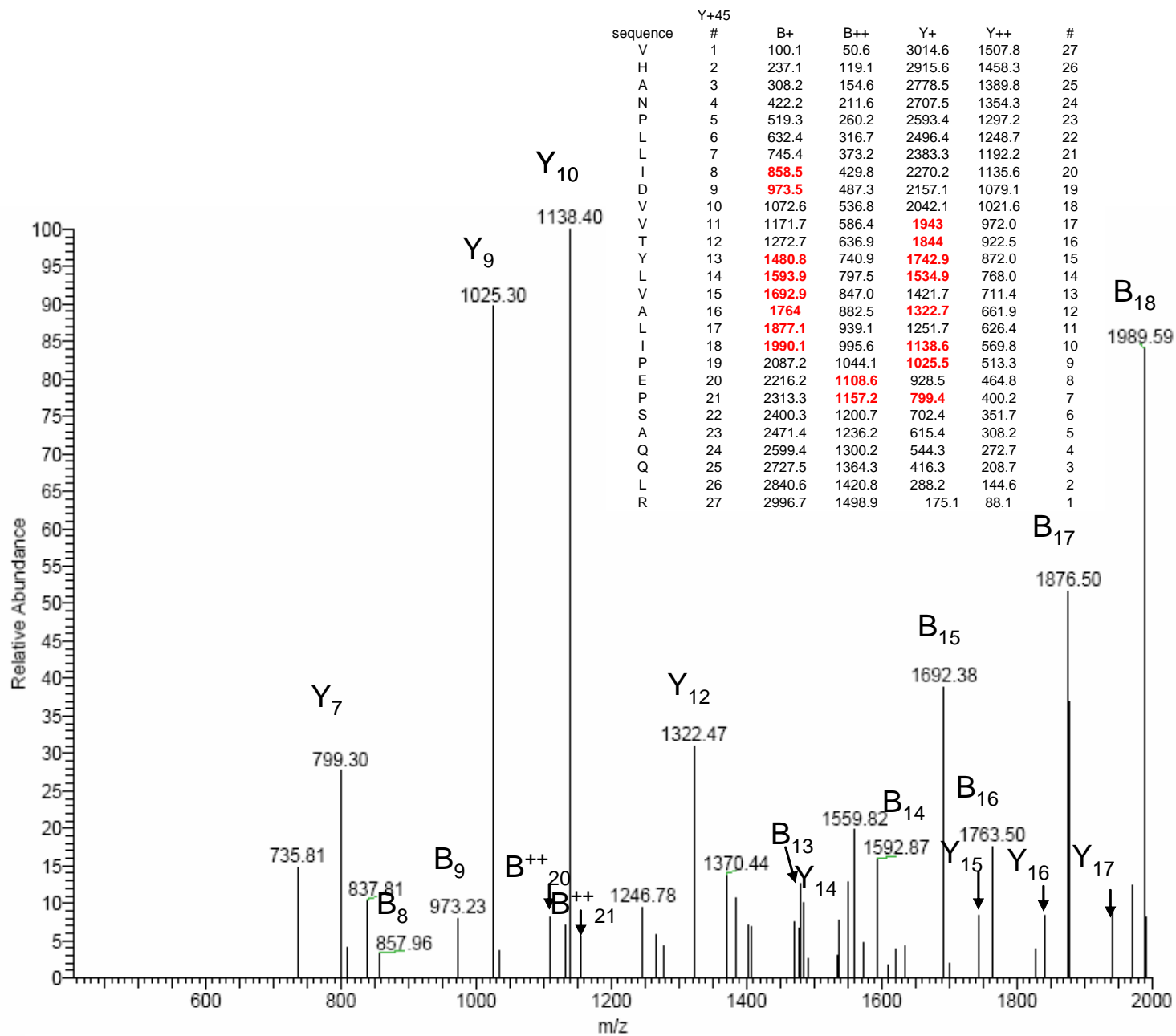


Figure 14: MS/MS spectrum of nitrated peptide obtained from 100 μM ONOO⁻-treated LDL apoB-100 protein. Mass of peptides observed is in red upon ionization and annotated on the chart. Spectra were obtained from bioworks browser.

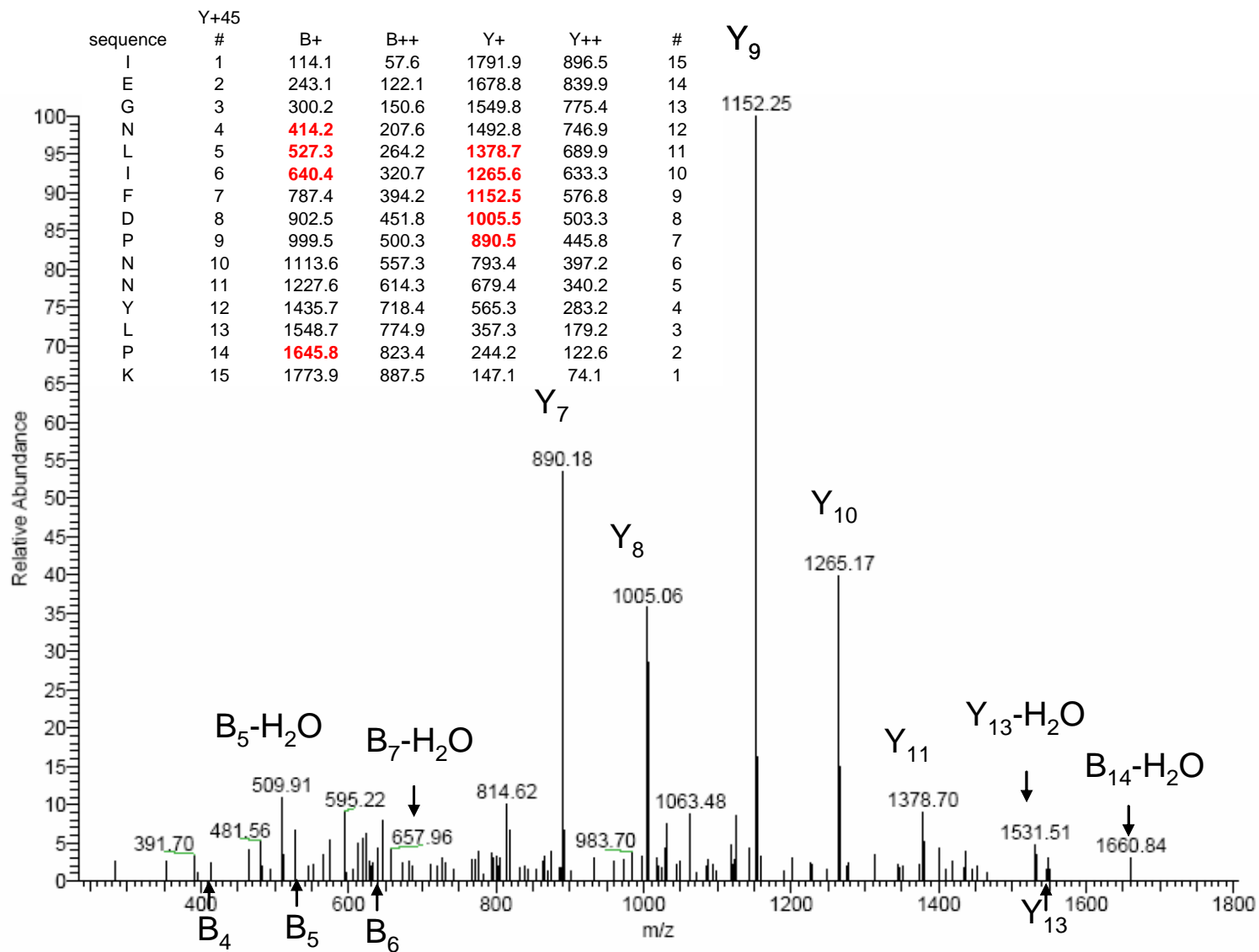


Figure 15: MS/MS spectrum of nitrated peptide obtained from 100 μM ONOO⁻-treated LDL apoB-100 protein. Mass of peptides observed is in red upon ionization and annotated on the chart. Spectra were obtained from bioworks browser.

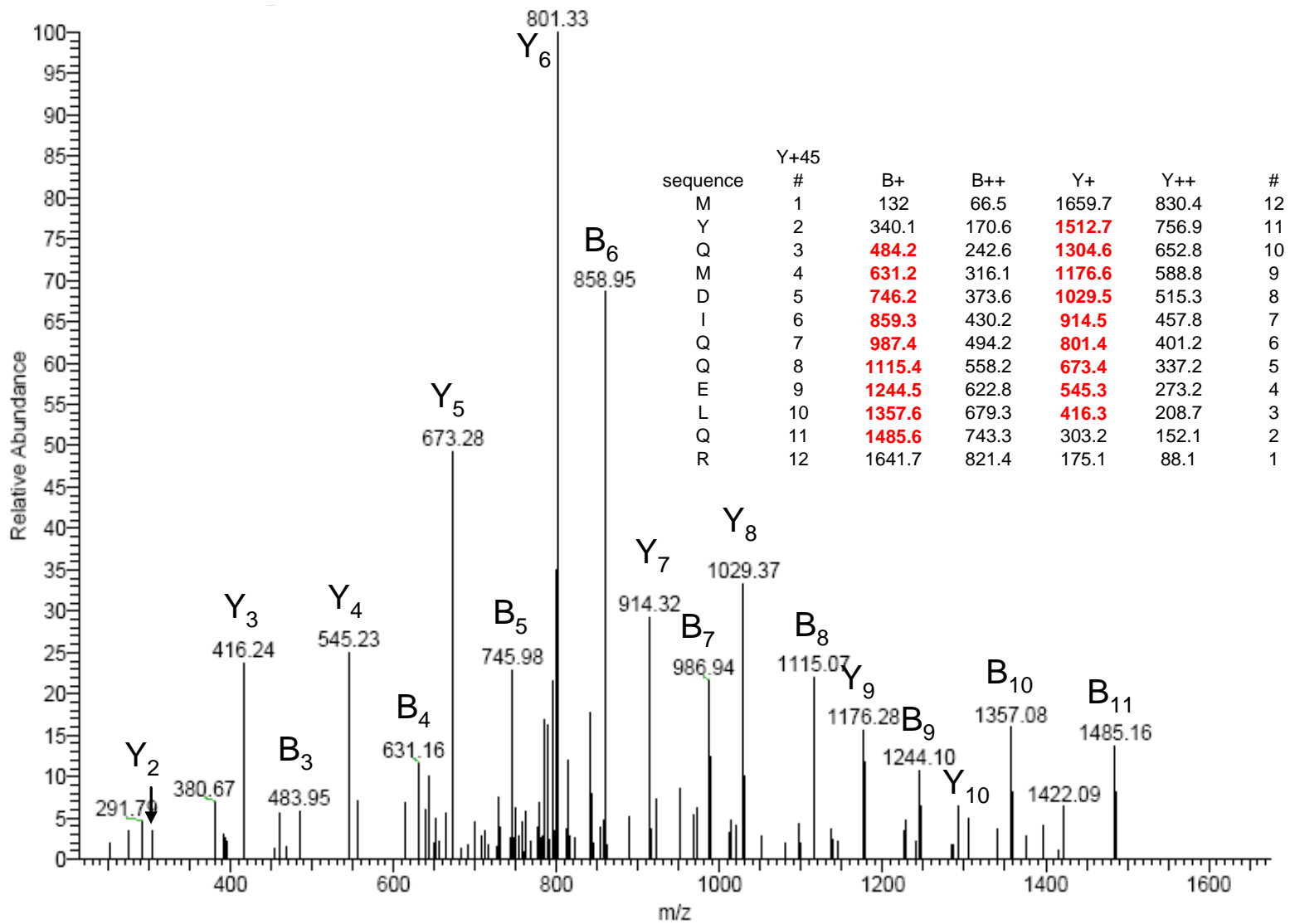


Figure 16: MS/MS spectrum of nitrated peptide obtained from 100 μM ONOO⁻-treated LDL apoB-100 protein. Mass of peptides observed is in red upon ionization and annotated on the chart. Spectra were obtained from bioworks browser.

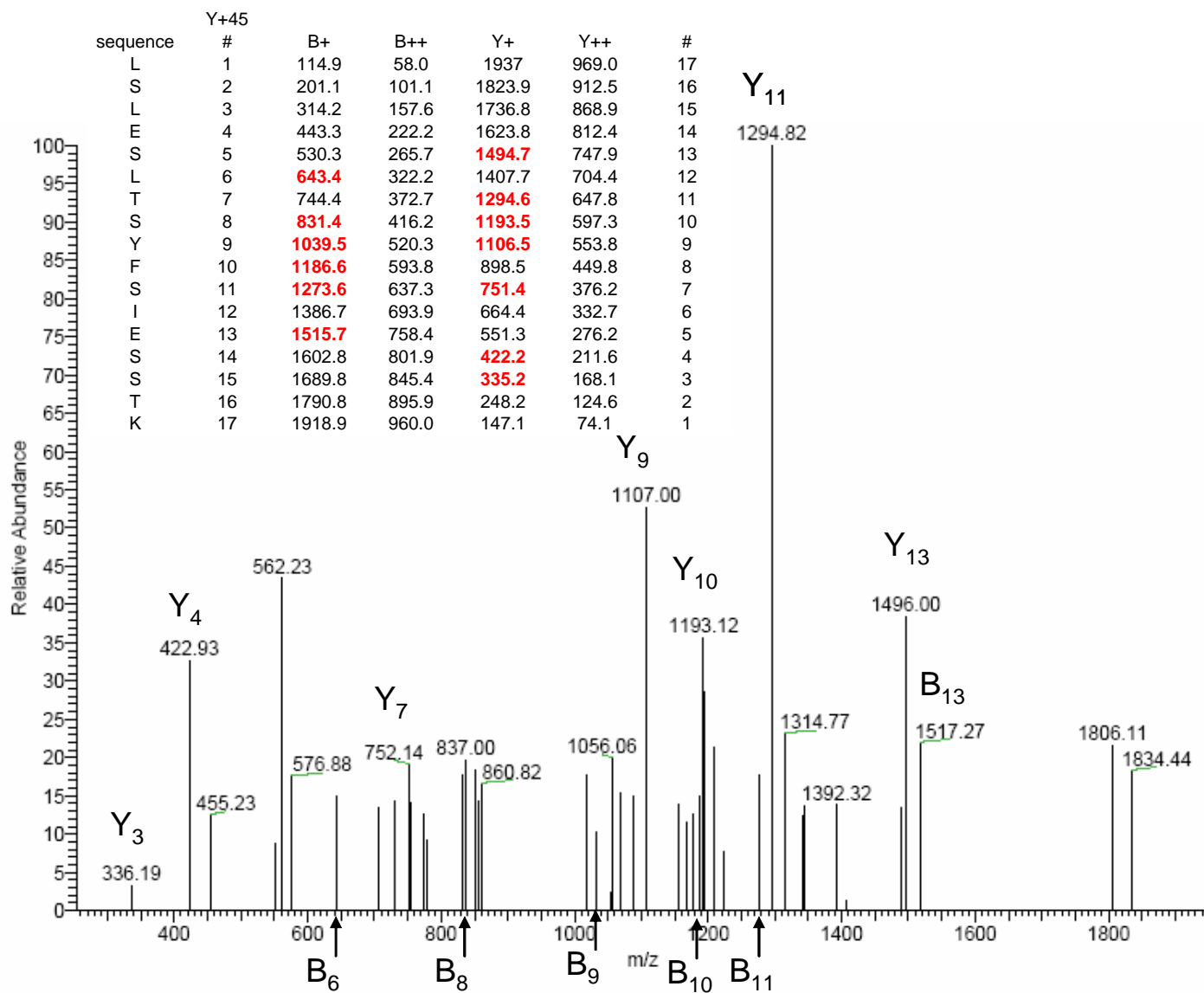


Figure 17: MS/MS spectrum of nitrated peptide obtained from 100 μM ONOO^- -treated LDL apoB-100 protein. Mass of peptides observed is in red upon ionization and annotated on the chart. Spectra were obtained from bioworks browser.

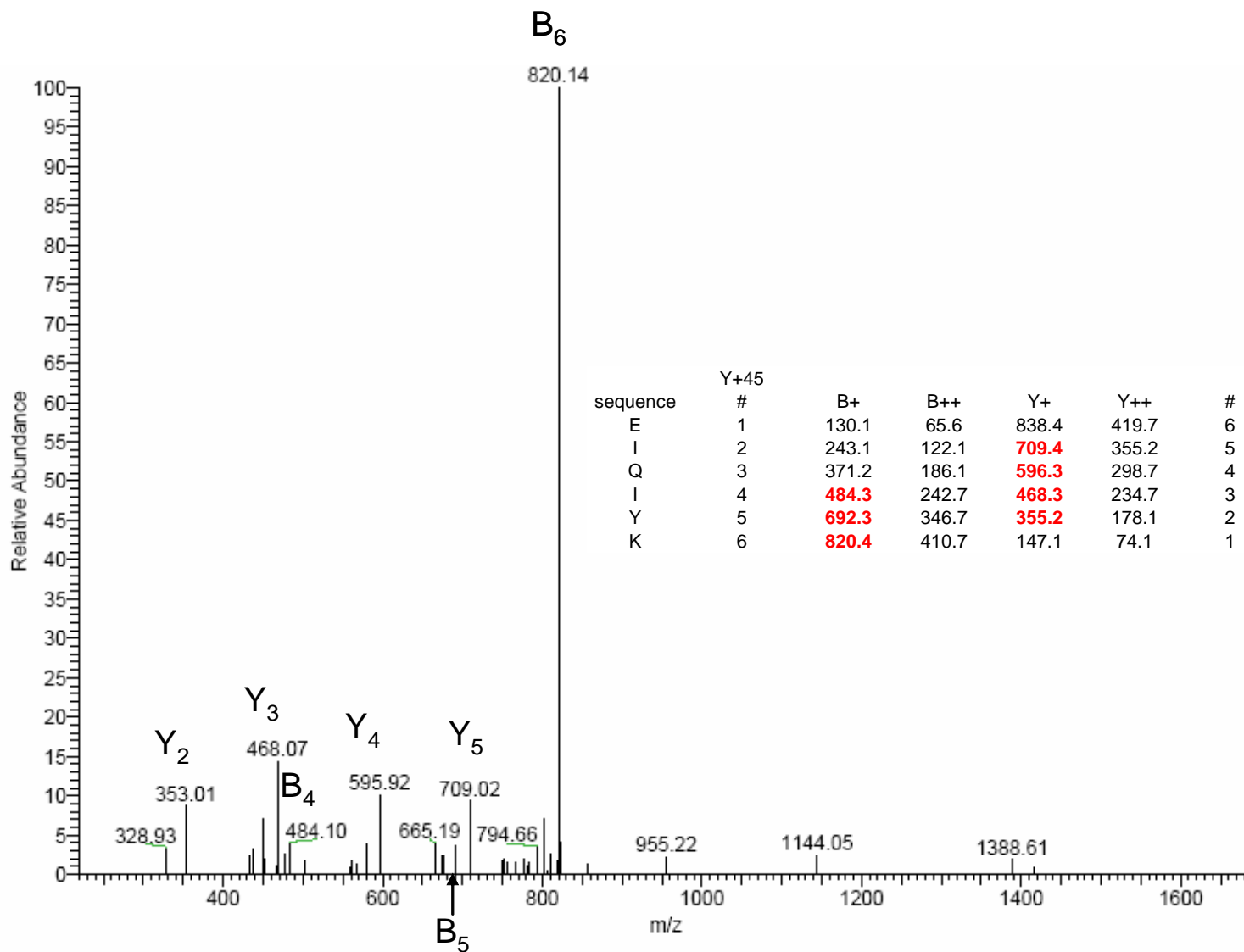


Figure 18: MS/MS spectrum of nitrated peptide obtained from 100 μM ONOO^- -treated LDL apoB-100 protein. Mass of peptides observed is in red upon ionization and annotated on the chart. Spectra were obtained from bioworks browser.

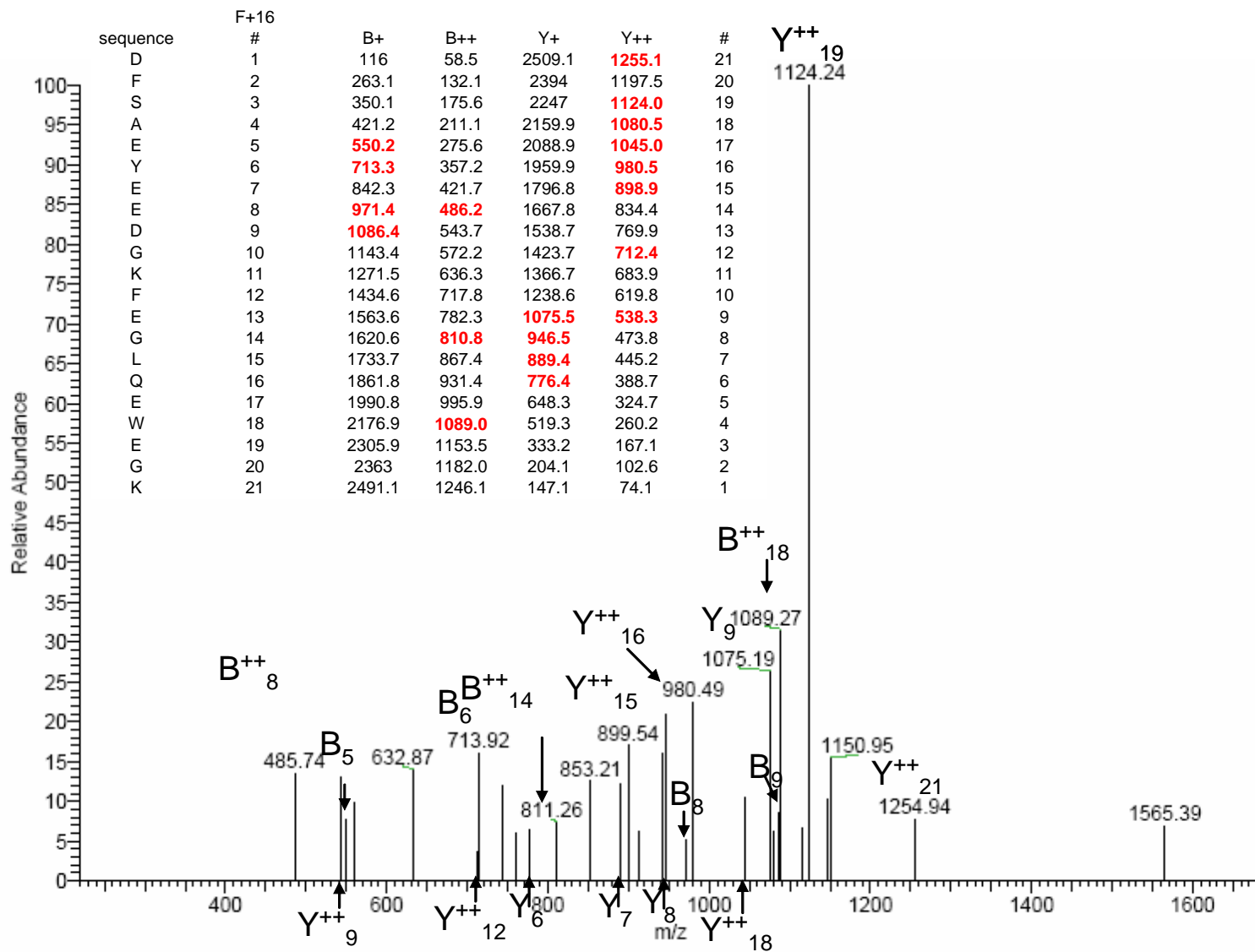


Figure 19: MS/MS spectrum of nitrated peptide obtained from 100 μM ONO_2^- -treated LDL apoB-100 protein. Mass of peptides observed is in red upon ionization and annotated on the chart. Spectra were obtained from bioworks browser.

sequence	Y+45 #	B+	B++	Y+	Y++	#
Y	1	209.1	105.1	1457.7	729.4	11
H	2	346.1	173.6	1249.6	625.3	10
W	3	532.1	266.6	1112.6	556.8	9
E	4	661.3	331.2	926.5	463.8	8
H	5	798.3	399.7	797.5	399.3	7
T	6	899.4	450.2	660.4	330.7	6
G	7	956.4	478.7	559.4	280.2	5
L	8	1069.5	535.3	502.3	251.7	4
T	9	1170.5	585.8	389.3	195.2	3
L	10	1283.6	642.3	288.2	144.6	2
R	11	1439.7	720.4	175.1	88.1	1

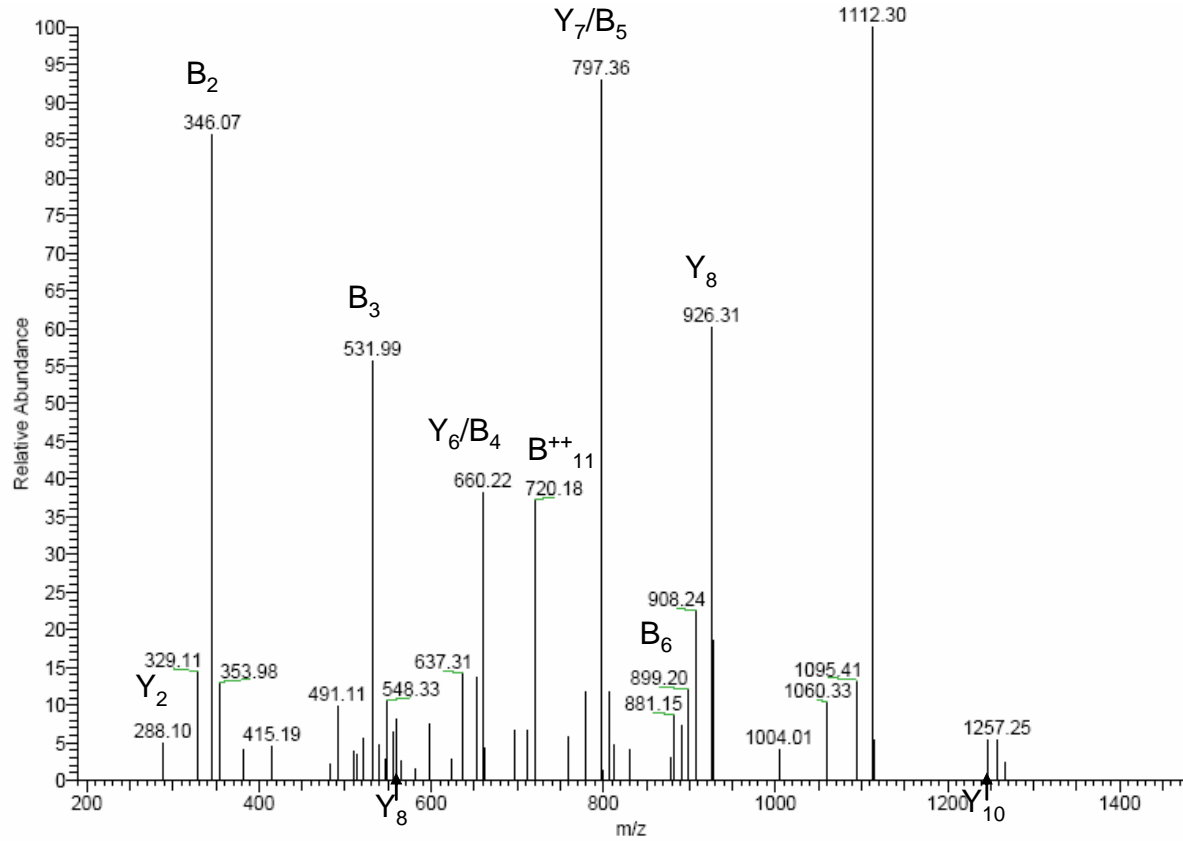


Figure 20: MS/MS spectrum of nitrated peptide obtained from 100 μ M ONOO⁻-treated LDL apoB-100 protein. Mass of peptides observed is in red upon ionization and annotated on the chart. Spectra were obtained from bioworks browser.