

Supporting Information

Nozawa *et al.* 10.1073/pnas.0805323106

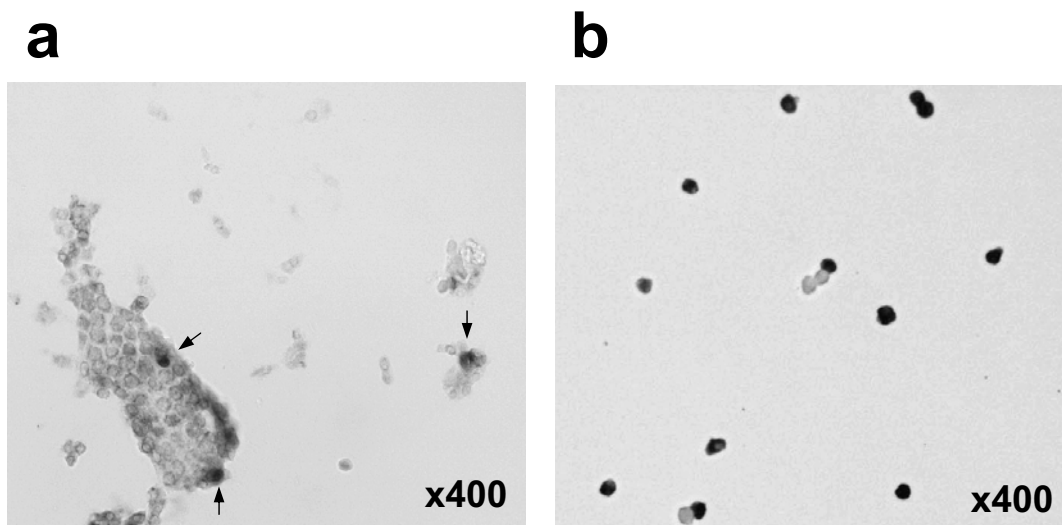


Fig. S1. Immunostaining for unfractionated epithelial cells (A) and enriched EC cells (B). 5-HT positive cells are sparsely distributed in unfractionated epithelial cells (arrows in A). Positive staining for 5-HT was obtained in over 80% of cells in the enriched EC cell fraction (B).

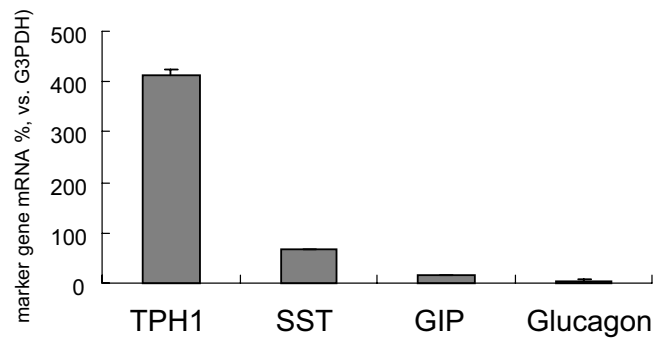


Fig. S2. RT-PCR identifiable contaminating cells in the enriched EC cell fraction. Data represent the ratio of somatostatin (SST), GIP, and glucagon to glyceraldehyde-3-phosphate dehydrogenase (G3PDH) mRNA. Data represent the mean \pm S.D. ($n = 3$).

Table S1. Primers used for real-time RT-PCR

Gene	Primer sequence (5'-3')	
	Forward	Reverse
Human TRPA1 (NM_007332)	GAGAGTCCTTCTAGAACCATATCTGA	CATGAGGACAATTGGGACAAATATT
Rat TRPA1 (NM_207608)	TCCTATACTGGAAGCAGCGA	CTCCTGATTGCCATCGACT
Mouse TRPA1 (NM_177781)	TGCTGCAGAAAAAATCAAGTTGA	CCTTGGCTGAGAAGAACTTTACACT
Rat TPH1 (NM_001100634)	TTTTGTGACTGCGACATCAA	CGTGGTGTGGGACTTCAGC
Rat chromogranin A (NM_021655)	AGGAGCATGGGATTCCACAG	TGGCTTTTCTGGCTTGCTG
Rat synaptophysin (NM_012664)	TTGGCAACTTATGGTTCGTGTT	TGCTGGTTGCTTTTCCGG
Rat VMAT1 (NM_013152)	CCCTTCGGTGTAACCTGGAC	TTTTGGTACTGAGCTGGCTTCA
Rat somatostatin (NM_012659)	CCAGACAGAGAACGATGCC	CTCCAGCCTCATCTCGTCCT
Rat GIP (NM_019630)	CTTTGCCCAAGAGCCTCAGT	CGCCATCCAGGCCAGTAG
Rat glucagon (NM_012707)	TCACAGGGCACATTCACCAG	TCATCAACCACTGCACAAAATCT