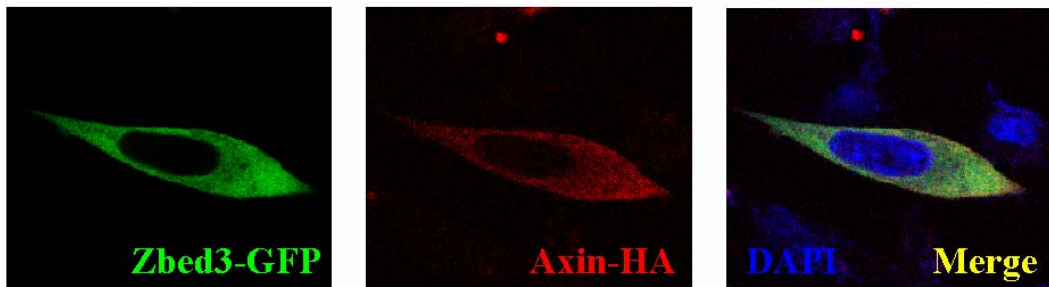
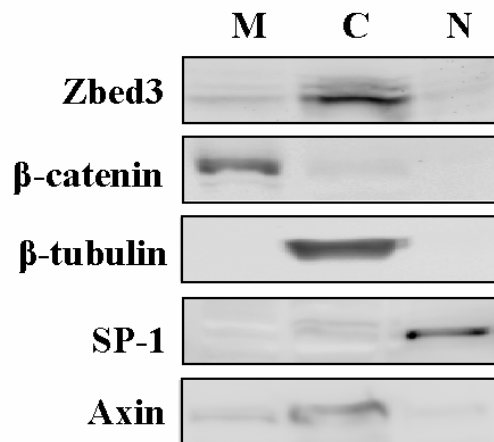


Supplementary Data 1 (S1)

A



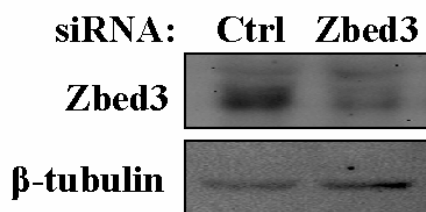
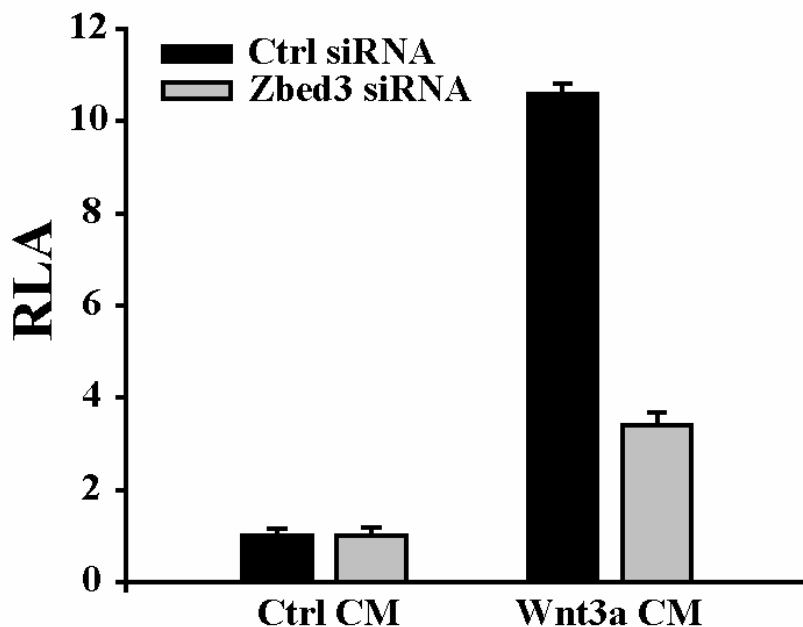
B



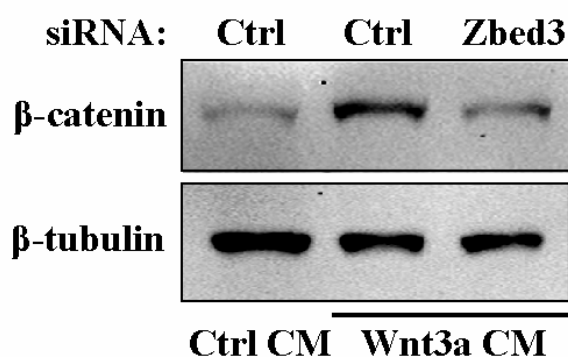
Supplementary data 1 (S1): Zbed3 and Axin co-localized in cytoplasm. (A) Zbed3-GFP and Axin-HA co-localized in cytoplasm of NIH3T3. (B) Endogenous Zbed3 and Axin were in the same cell fraction of NIH3T3. NIH3T3 were fractionated into membrane, cytoplasm and nucleus fractions which were abbreviated as M, C and N. β -catenin, β -tubulin and SP-1 were used as marker for different cell fractions respectively. Experiments were performed as described in Experimental Procedures.

Supplementary Data 2 (S2)

A



B



Supplementary data 2 (S2): Knocking down Zbed3 with siRNA decreases Wnt/ β -catenin signaling. (A) & (B) Zbed3 siRNA effects on Wnt/ β -catenin signaling in NIH3T3 cells were measured as described in Fig. 4A&B. RNAi efficiency of Zbed3 siRNA is shown in the lower panel of Fig. S2A.