

Supporting information

A New Class of Natural Glycopeptides with Sugar Moiety-dependent Antioxidant Activities derived from *Ganoderma lucidum* Fruiting Bodies

Yalin Wu* and Denong Wang

Department of Ophthalmology, Columbia University, New York, New York 10032; and Stanford Tumor Glycomics Laboratory, Department of Genetics, Stanford University School of Medicine, Stanford, California 94305

E-mails: yw2248@columbia.edu

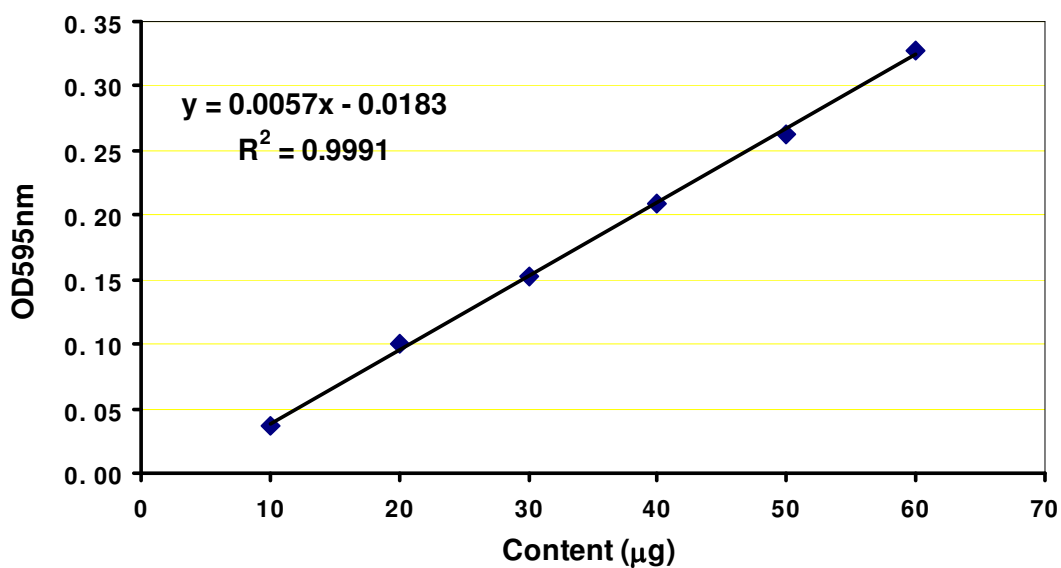


Figure S1. Protein calibration curve of a standard curve using Coomassie Brilliant Blue and bovine serum albumin as the standard.