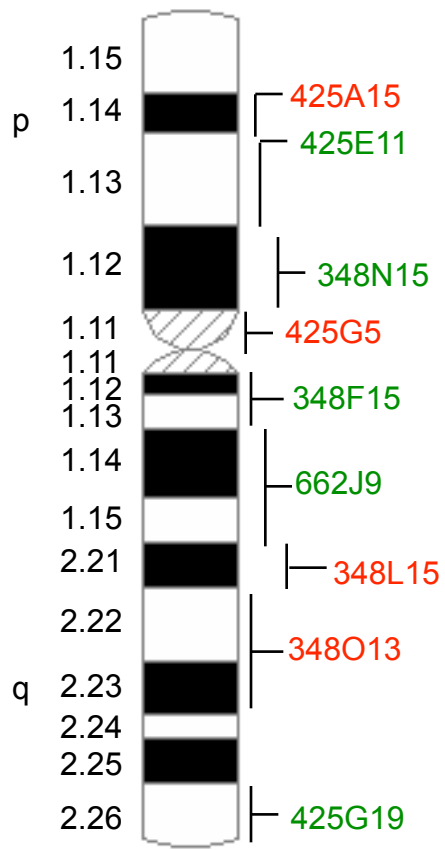
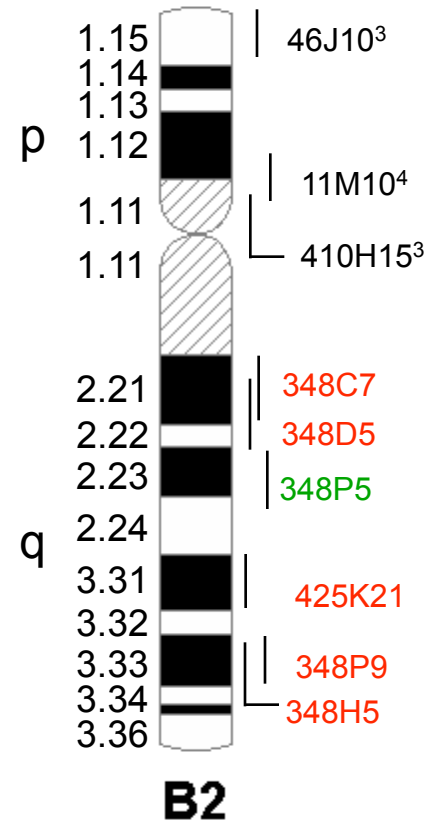
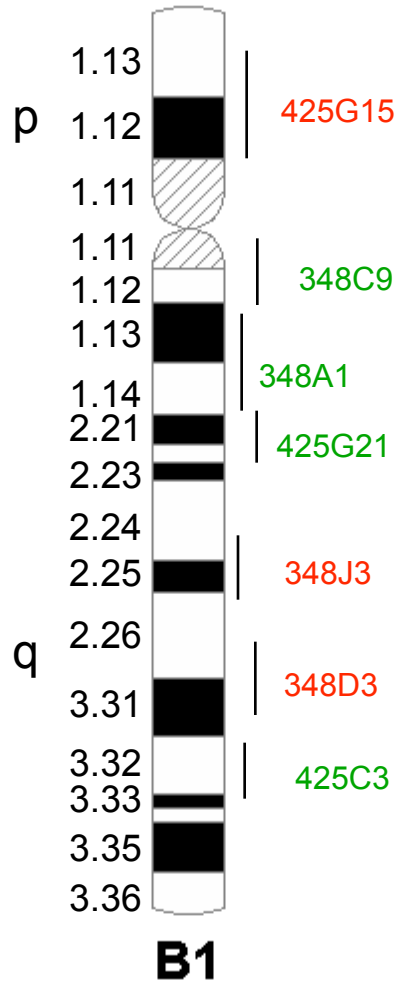


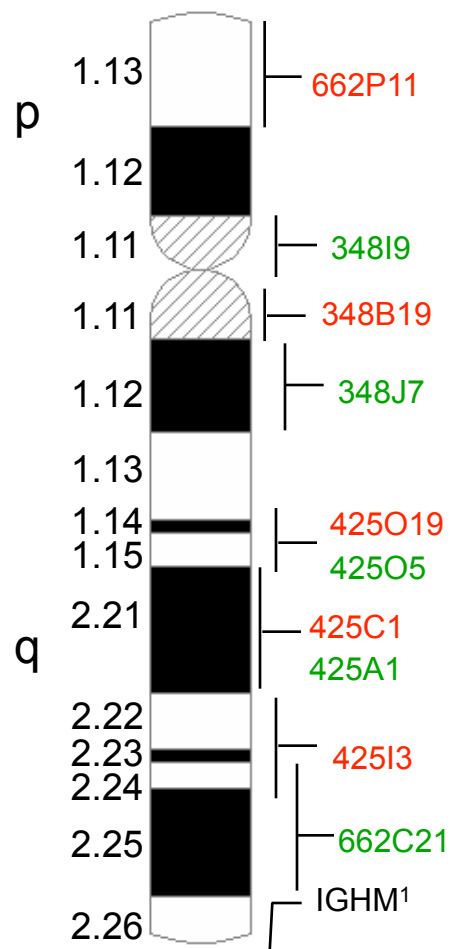
Supplementary Figure 2: Cytogenetic maps of each domestic cat chromosome. Chromosome banding nomenclature follows the standard convention (Cho KW et al. *Cytogenet Cell Genet.* 1997;79(1-2):71-8). BAC probes are labeled in green and red to the right of each chromosome, connected to their band assignment based on FISH experiments. Previously published gene or BAC clone assignments are given in black, followed by a superscript designation referring to the publication.

- ¹ Cho KW, Satoh H, Youn HY, Watari T, Tsujimoto H, O'Brien SJ, Hasegawa A. *Cytogenet Cell Genet.* 1997;79(1-2):118-20.
- ² Lee JH, Cho KW. *Cytogenet Cell Genet.* 1999;84(1-2):109-10.
- ³ Beck TW, Menninger J, Murphy WJ, Nash WG, O'Brien SJ, Yuhki N. *Immunogenetics.* 2005 ;56(10):702-9.
- ⁴ Eder V, Ventura M, Ianigro M, Teti M, Rocchi M, Archidiacono N. *Mol Biol Evol.* 2003 ;20(9):1506-12.
- ⁵ Fujino Y, Mizuno T, Masuda K, Ohno K, Satoh H, Tsujimoto H. *Cytogenet Cell Genet.* 2001;95(1-2):122-4.
- ⁶ Cho KW, Okuda M, Endo Y, Satoh H, Kang CB, Watari T, Tsujimoto H, Hasegawa A. *Cytogenet Cell Genet.* 1997;79(1-2):145-6.
- ⁷ Fujino Y, Mizuno T, Masuda K, Ohno K, Satoh H, Tsujimoto H. *Cytogenet Cell Genet.* 2001;94(1-2):92-3.
- ⁸ Cho KW, Satoh H, Youn HY, Watari T, Tsujimoto H, Hasegawa A. *Cytogenet Cell Genet.* 1997;78(2):135-6.
- ⁹ Cho KW, Tsujimoto H, Hasegawa A, Satoh H. *Mamm Genome.* 1998 ;9(2):178-9.

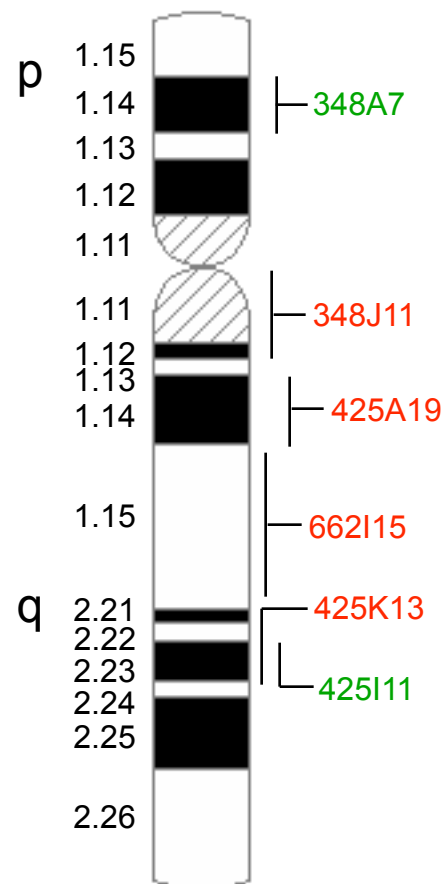


A3





B3



B4

