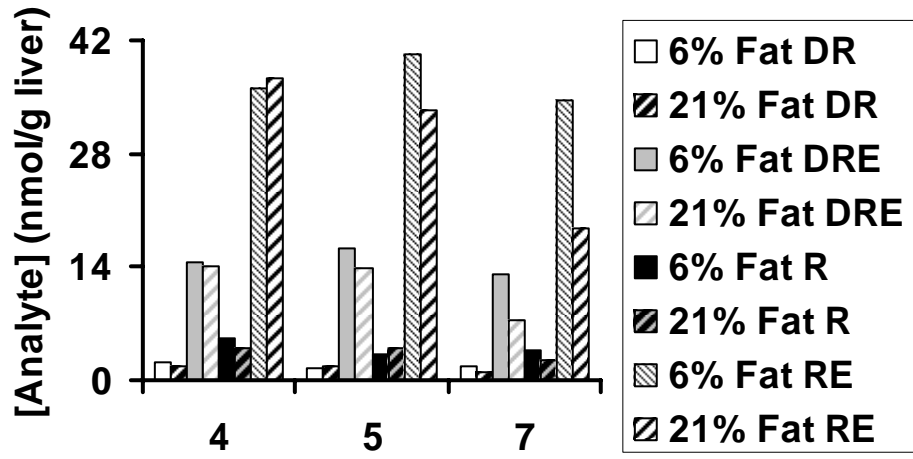


Supplemental Fig. 1. Concentrations (nmol/g) of 3,4-didehydroretinol, 3,4-didehydroretinyl esters, retinol, and retinyl esters in liver (A) and kidney (B) in rats fed 6% (solid; except for retinyl ester = narrow downward diagonal) versus 21% fat (wide upward diagonal) 4, 5, and 7 days following a one time oral 700 nmol 3,4-didehydroretinyl acetate dose at the beginning of week 10. These rats were dosed daily with 70 nmol retinyl acetate. Different lower case letters indicate a significant difference between 6 and 21% dietary fat group by compound by LSD ($P < 0.05$). n = 4 per day per dietary fat group except for day 5, 21% dietary fat n = 3. Values are means.

FIGURE S1

A



B

