

Supporting Information

Omsland, et al. 10.1073/pnas.0812074106

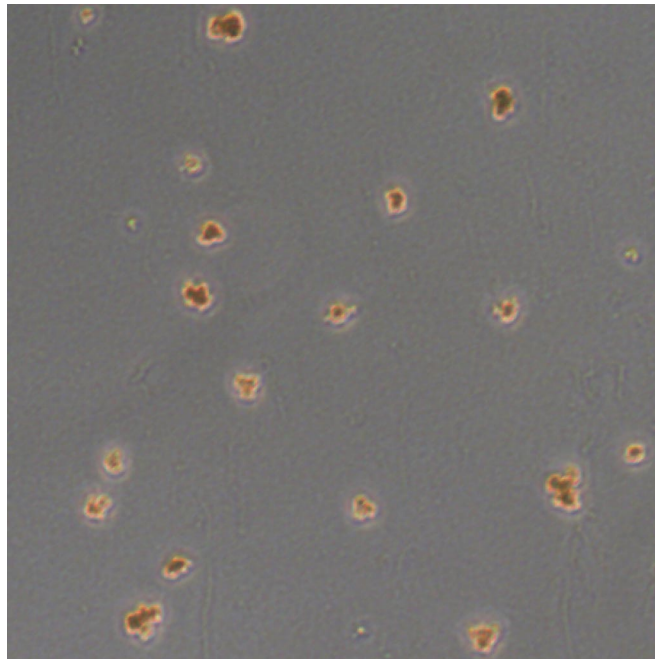


Fig. S1. *C. burnetii* forms colonies on solid ACCM medium. *C. burnetii* was spread on a 1% ACCM-agarose base and covered with 0.25% ACCM-agarose. Colonies (0.05–0.1 mm) were present after a 14 days incubation in a 2.5% oxygen environment. A representative image is shown.

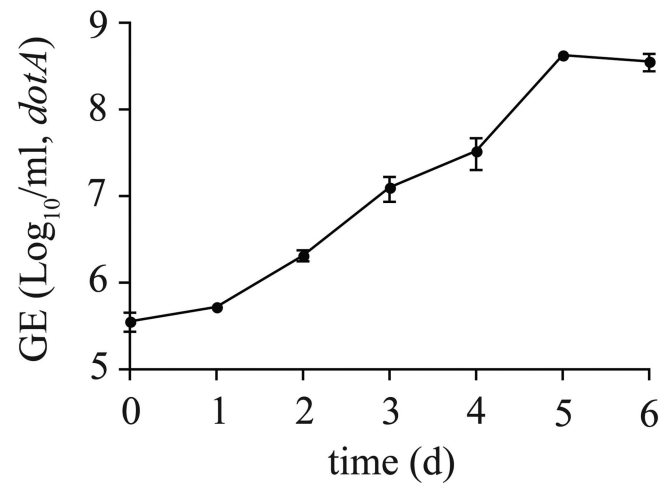


Fig. S2. *C. burnetii* SCVs can initiate growth in ACCM. ACCM was inoculated with purified *C. burnetii* SCVs and culture aliquots analyzed for increases in *C. burnetii* GE every 24 h for 6 days by QPCR. Values are mean \pm SEM ($n = 3$). Cultures exhibited an approximate 3 log increase in GE over 6 days.

Table S1. Ribosomal gene expression of *C. burnetii* during incubation in CCM

Gene	Designation	Annotation	Fold difference (CCM/Vero)
CBU0221b	—	Protein Translation Elongation Factor Tu	−6.10
CBU0224	<i>secE</i>	Protein translocase subunit secE	−6.41
CBU0225	<i>nusG</i>	Transcription antitermination protein nusG	−9.20
CBU0226	<i>rplK</i>	LSU ribosomal protein L11P	−3.78
CBU0227	<i>rplA</i>	LSU ribosomal protein L1P	−5.28
CBU0228	<i>rplJ</i>	LSU ribosomal protein L10P	−21.30
CBU0229	<i>rplL</i>	LSU ribosomal protein L12P	−9.55
CBU0231	<i>rpoB</i>	DNA-directed RNA polymerase (β)	−3.82
CBU0232	<i>rpoC</i>	DNA-directed RNA polymerase (β')	−3.75
CBU0233	<i>rpsL</i>	SSU ribosomal protein S12P	−16.09
CBU0234	<i>rpsG</i>	SSU ribosomal protein S7P	−5.98
CBU0235	<i>fusA</i>	Protein translation elongation factor G	−7.05
CBU0237	<i>rpsJ</i>	SSU ribosomal protein S10P	−5.04
CBU0238	<i>rplC</i>	LSU ribosomal protein L3P	−4.70
CBU0239	<i>rplD</i>	LSU ribosomal protein L1E/L4P	−5.69
CBU0240	<i>rplW</i>	LSU ribosomal protein L23P	−3.58
CBU0241	<i>rplB</i>	LSU ribosomal protein L2P	−2.02
CBU0242	<i>rpsS</i>	SSU ribosomal protein S19P	−10.85
CBU0243	<i>rplV</i>	LSU ribosomal protein L22P	−6.28
CBU0244	<i>rpsC</i>	SSU ribosomal protein S3P	−4.22
CBU0245	<i>rplP</i>	LSU ribosomal protein L16P	−6.74
CBU0246	<i>rpmC</i>	LSU ribosomal protein L29P	−9.79
CBU0247	<i>rpsQ</i>	SSU ribosomal protein S17P	−3.70
CBU0248	<i>rplN</i>	LSU ribosomal protein L14P	−6.52
CBU0249	<i>rplX</i>	LSU ribosomal protein L24P	−6.39
CBU0250	<i>rplE</i>	LSU ribosomal protein L5P	−7.55
CBU0251	<i>rpsN</i>	SSU ribosomal protein S14P	−4.64
CBU0252	<i>rpsH</i>	SSU ribosomal protein S8P	−4.79
CBU0253	<i>rplF</i>	LSU ribosomal protein L6P	−3.28
CBU0254	<i>rplR</i>	LSU ribosomal protein L18P	−2.15
CBU0255	<i>rpsE</i>	SSU ribosomal protein S5P	−2.31
CBU0256	—	LSU ribosomal protein L30P	−2.63
CBU0257	<i>rplO</i>	LSU ribosomal protein L15P	−4.80
CBU0260	—	SSU ribosomal protein S13P	−3.21
CBU0261	<i>rpsK</i>	SSU ribosomal protein S11P	−4.30
CBU0263	<i>rpoA</i>	DNA-directed RNA polymerase (α)	−6.56
CBU0264	<i>rplQ</i>	LSU ribosomal protein L17P	−2.43