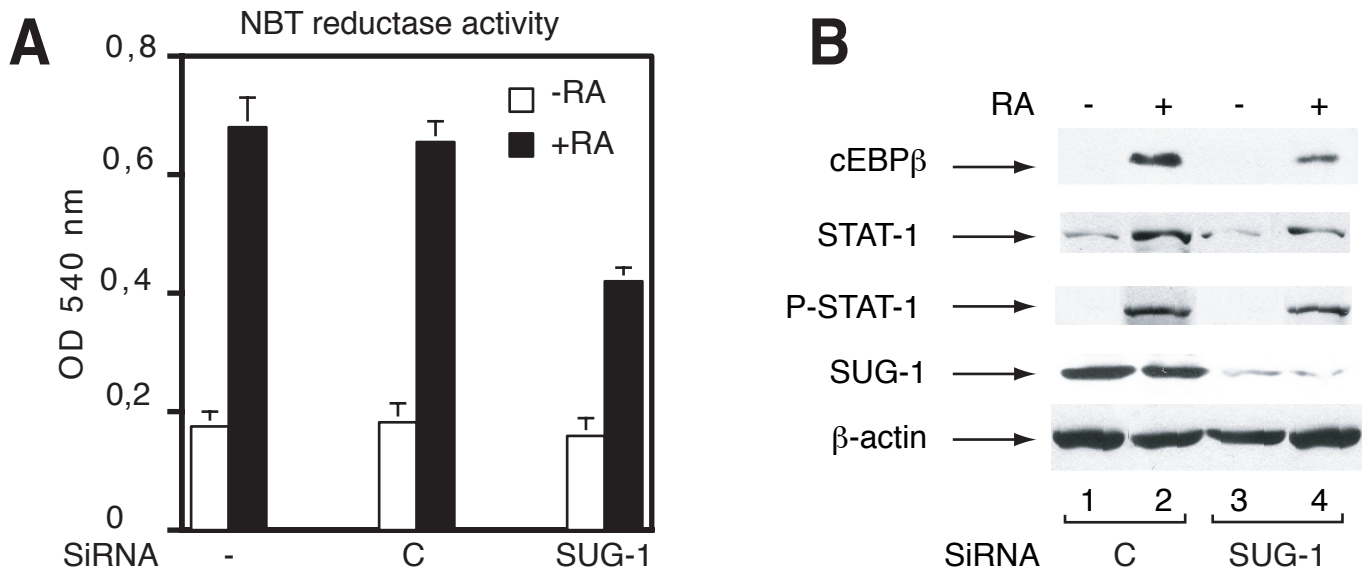


Supplemental Figure 1

NB4 cells



NB4 cells were cultured and transfected with siRNAs as described (20). (A) Knockdown of SUG-1 in NB4 cells decreases the RA-induced increase in NADPH oxidase activity measured by nitrobluetetrazolium reduction (NBT-R) as in (20). Each value represents the mean \pm SD of three independent culture flasks from two independent experiments. (B) Immunoblots showing that knockdown of SUG-1 also decreased the RA-induced expression of cEBP β and STAT-1 as well as the RA-induced phosphorylation of STAT-1. Antibodies against cEBP β and STAT1 were from Santa Cruz Biotechnology Inc.(USA). Those against the phosphorylated form of STAT-1 were from Upstate/Millipore.