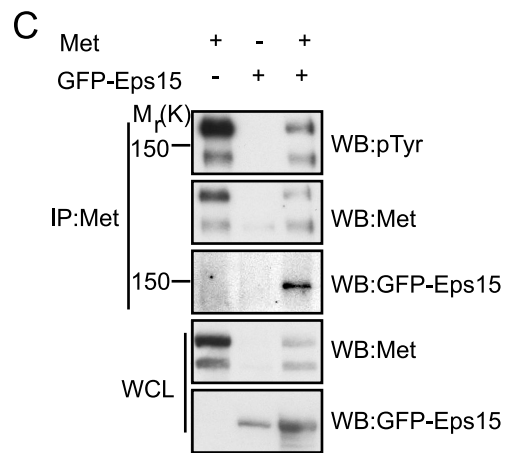
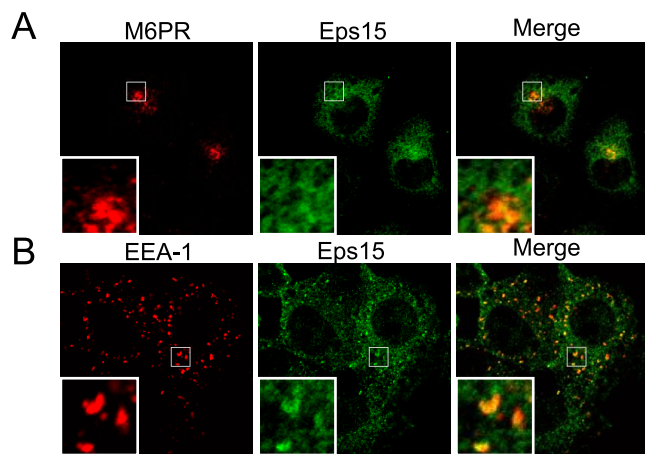


**FIG. S1. Eps15 is recruited to a Met complex that is EEA-1 positive upon Met activation.** *A*, Confocal images of HeLa cells stained for endogenous Eps15 and Mannose-6-phosphate receptor (M6PR). M6PR (red), Eps15 (green) and DAPI. 100x mag, 1.5x zoom. *B*, Confocal images of HeLa cells cold load stimulated with HGF and released for 15 min then stained for Eps15 (green) and early endosome marker EEA-1 (red) and DAPI. 100x mag, 1.5x zoom. *C*, HEK293 cells were transiently transfected with Met, GFP-Eps15 or both. Lysates were immunoprecipitated (IP) for Met and blotted with the indicated antibodies (pTyr = phosphotyrosine).

**FIG. S2. Ubiquitination occurs upon Met over-expression and Eps15 WT but not  $\Delta$ UIM binds to Ub.** *A*, HEK293 cells transiently transfected with vector or Met and HA-Ub were immunoprecipitated with anti-Met antibodies and blotted for ubiquitin (Ub) stripped then reprobbed for total Met levels. *B*, HEK293 cells were transiently transfected with Eps15 WT or Eps15 $\Delta$ UIM (also referred to as Eps15 $\Delta$ IV) immunoprecipitated with anti-FLAG M2 beads and blotted as indicated. Molecular weight is indicated to the left-hand side. Heavy chain is denoted with an asterisk.

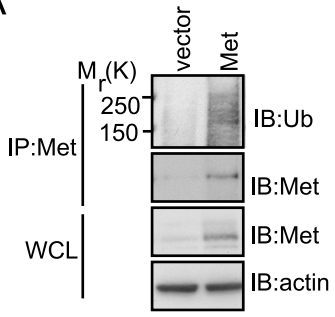
**FIG. S3. Comparison of Gab1 and Eps15 co-immunoprecipitation with Grb2 and Eps15 P770A and WT co-immunoprecipitation with Met.** *A*, HEK293 cells transfected with GFP-tagged Eps15 or GFP-Gab1 were co-transfected with Myc-Grb2 and immunoprecipitated as indicated. *B*, Met and either Eps15 WT or P770A expression constructs were immunoprecipitated as indicated and blotted.

# Supplemental Figure S1

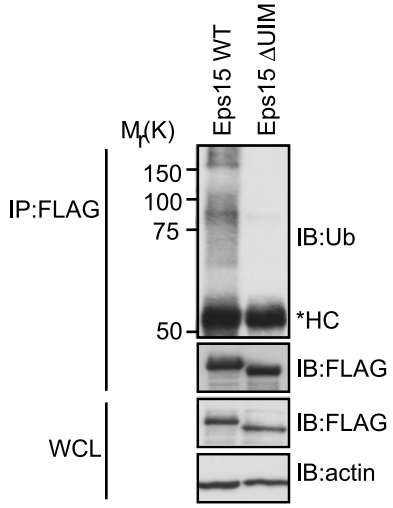


# Supplemental Figure S2

**A**



**B**



Supplemental Figure S3

