

SUPPLEMENTAL FIGURE LEGENDS

Fig. S1. Cellular distribution of cytochrome *c* is matched with the staining pattern of mitochondria in each different condition. Rat VSMCs were serum-starved, then stimulated with AngII and treated with H₂O₂ as described for 'Figure 1E'. After fixed, cells were incubated with 200 nM MitoTracker Deep Red 633 for 20 min at room temperature. Next, cellular distribution of cytochrome *c* was visualized by immunostaining. Images of MitoTracker staining were obtained using a 633 nm excitation and 650 nm emission filter set. Data shown represent similar results obtained from three independent experiments.

Fig. S2. Overexpression of phosphorylation-impaired BAD proteins induces the fragmented pattern of cytochrome *c* distribution in rat VSMCs. Cells were transfected with plasmids expressing indicated phosphorylation-impaired BAD. Cellular distribution of cytochrome *c* and expression of the mutant BAD proteins were visualized as described for the case of the wild-type BAD in 'Figure 3E'. Images shown represent similar results obtained from four independent experiments.

Figure S1

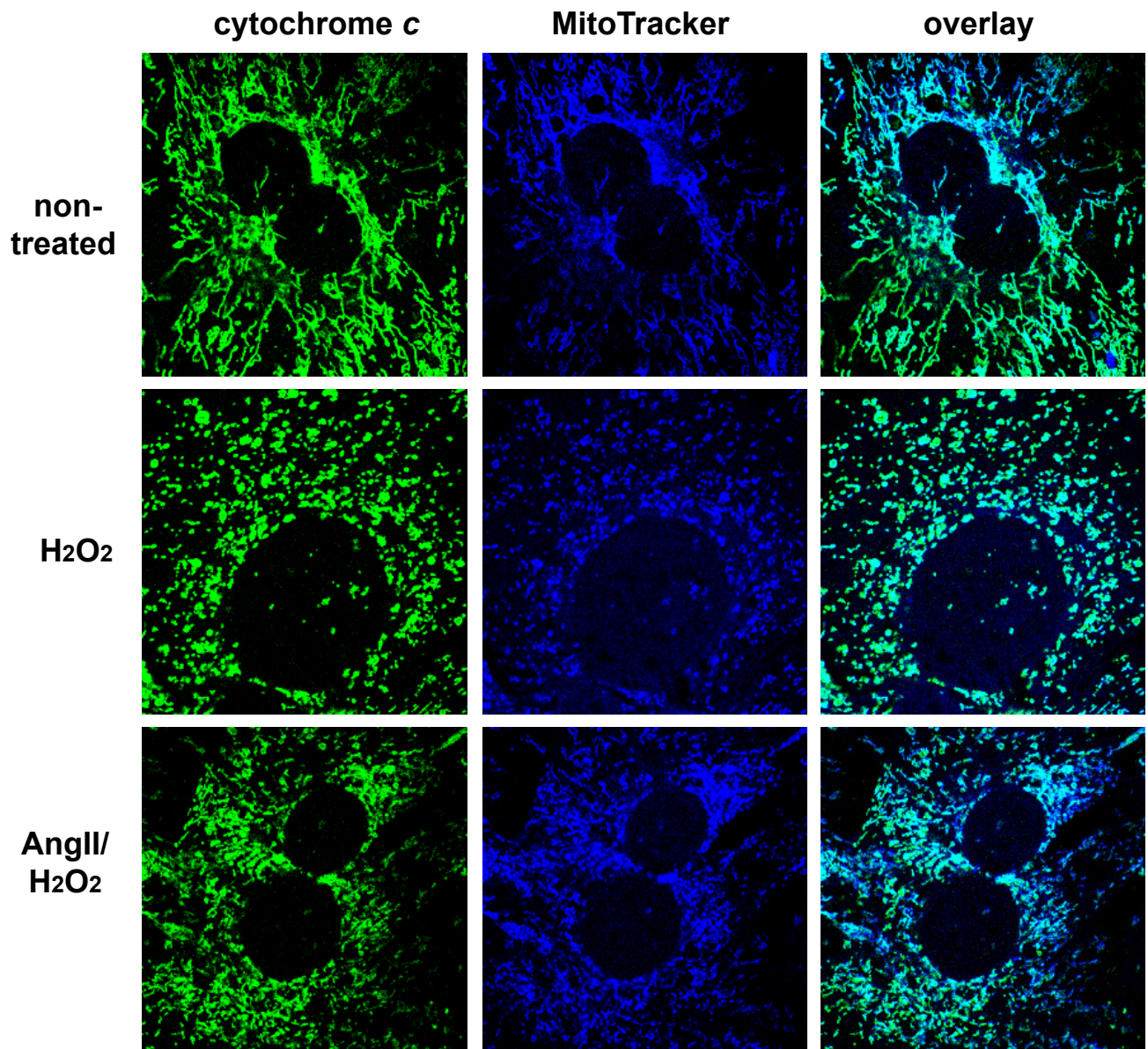


Figure S2

