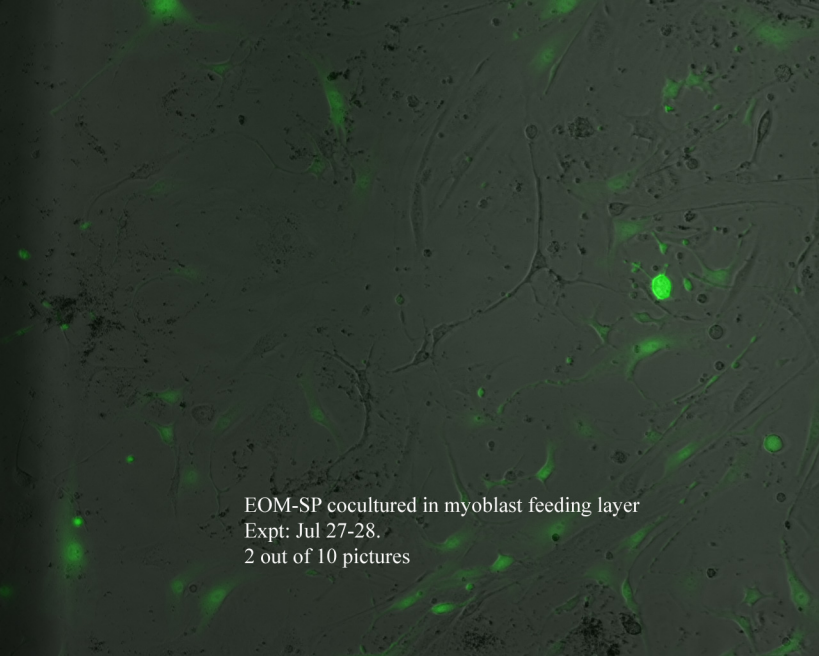
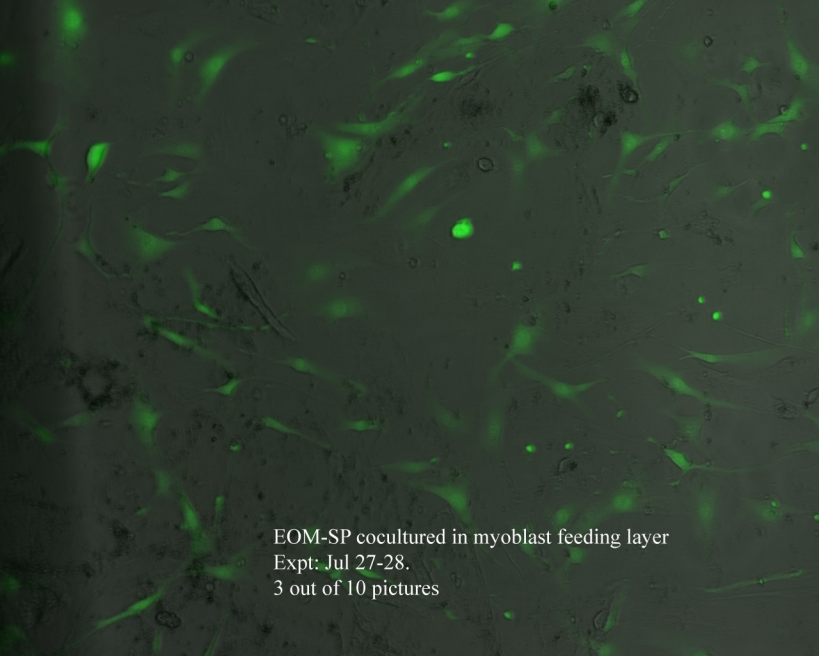


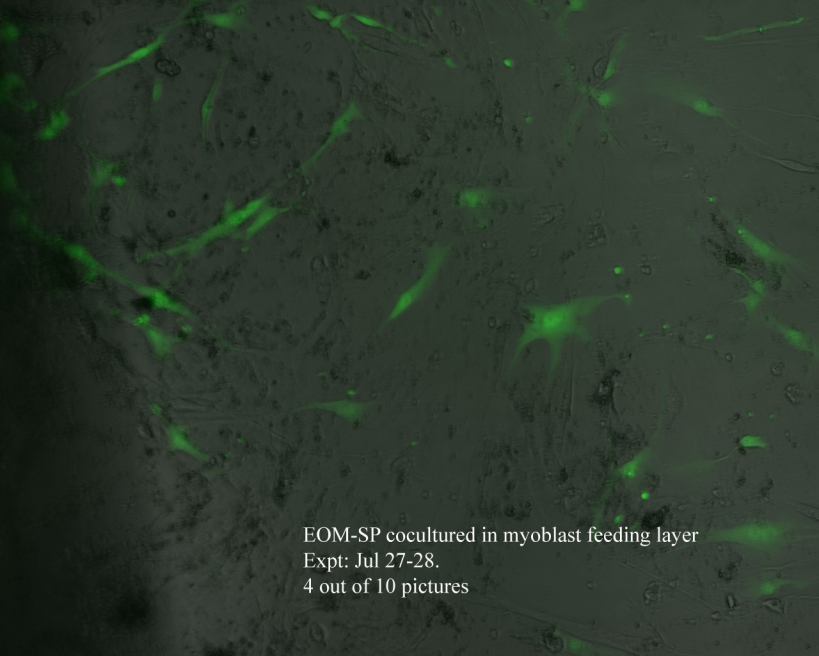
EOM-SP cocultured in myoblast feeding layer  
Expt: Jul 27-28.  
1 out of 10 pictures

A fluorescence microscopy image showing a dense network of cells. The cells are primarily stained in shades of green and yellow, with some bright green spots. The background is dark, making the stained cells stand out. The cells appear to be interconnected, forming a complex web-like structure. The overall appearance is that of a cell culture or tissue section.

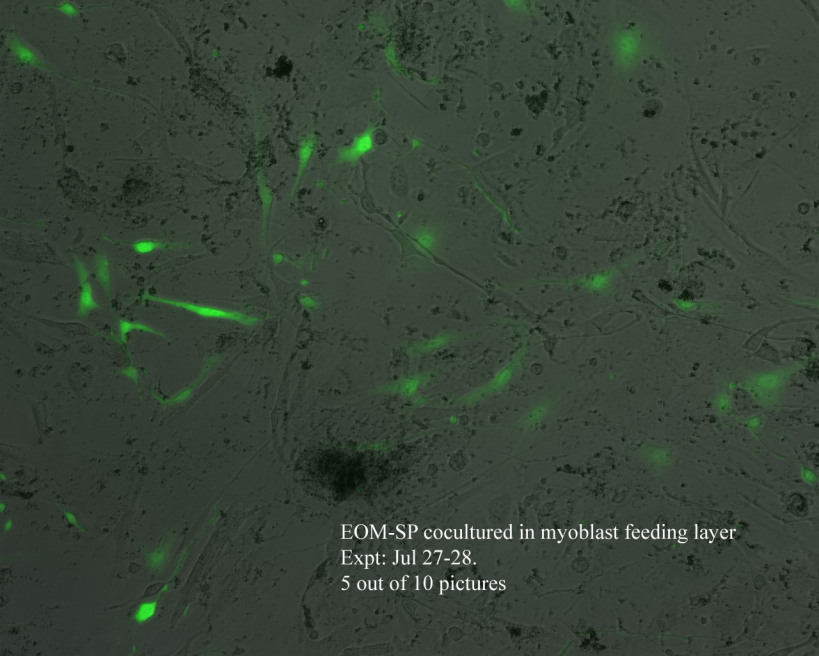
EOM-SP cocultured in myoblast feeding layer  
Expt: Jul 27-28.  
2 out of 10 pictures



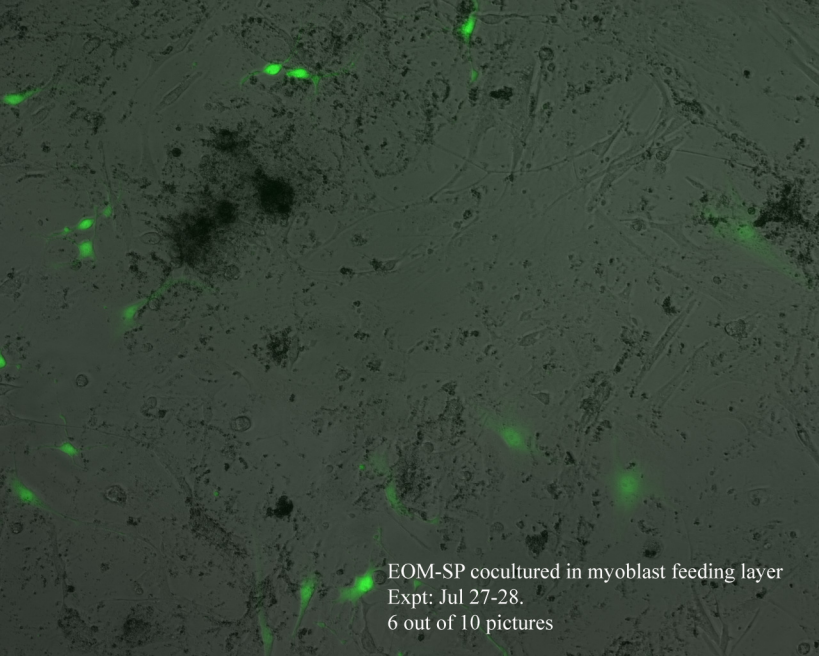
EOM-SP cocultured in myoblast feeding layer  
Expt: Jul 27-28.  
3 out of 10 pictures



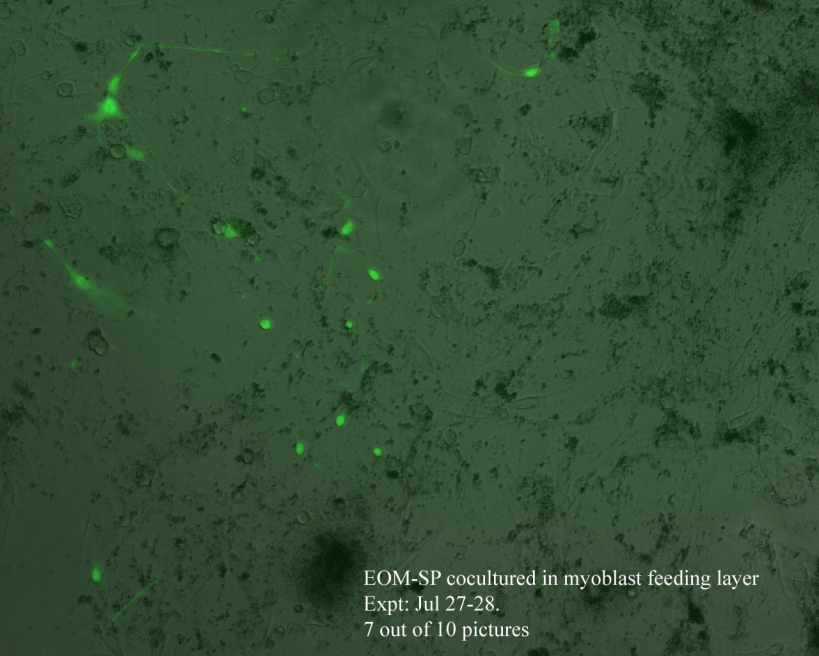
EOM-SP cocultured in myoblast feeding layer  
Expt: Jul 27-28.  
4 out of 10 pictures



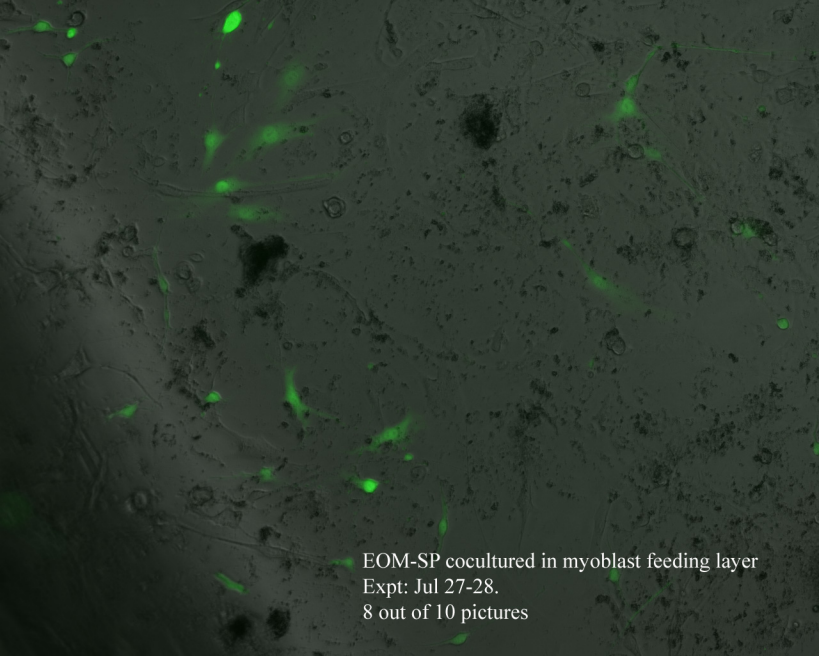
EOM-SP cocultured in myoblast feeding layer  
Expt: Jul 27-28.  
5 out of 10 pictures



EOM-SP cocultured in myoblast feeding layer  
Expt: Jul 27-28.  
6 out of 10 pictures

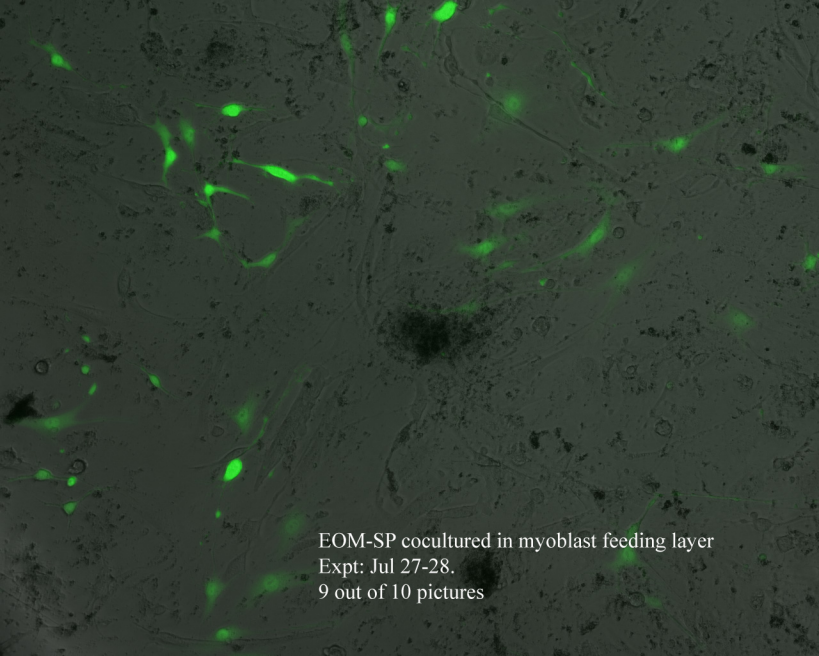


EOM-SP cocultured in myoblast feeding layer  
Expt: Jul 27-28.  
7 out of 10 pictures

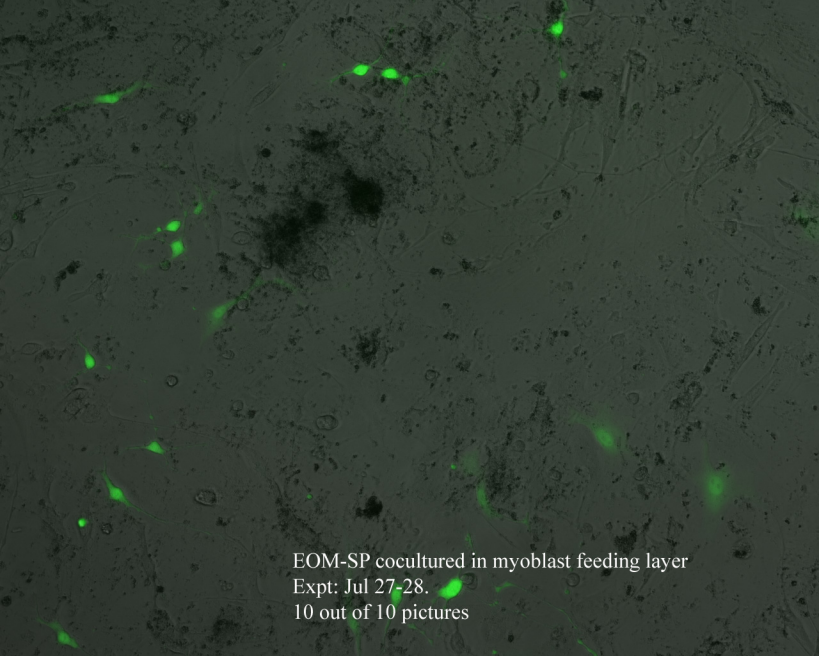


EOM-SP cocultured in myoblast feeding layer  
Expt: Jul 27-28.  
8 out of 10 pictures

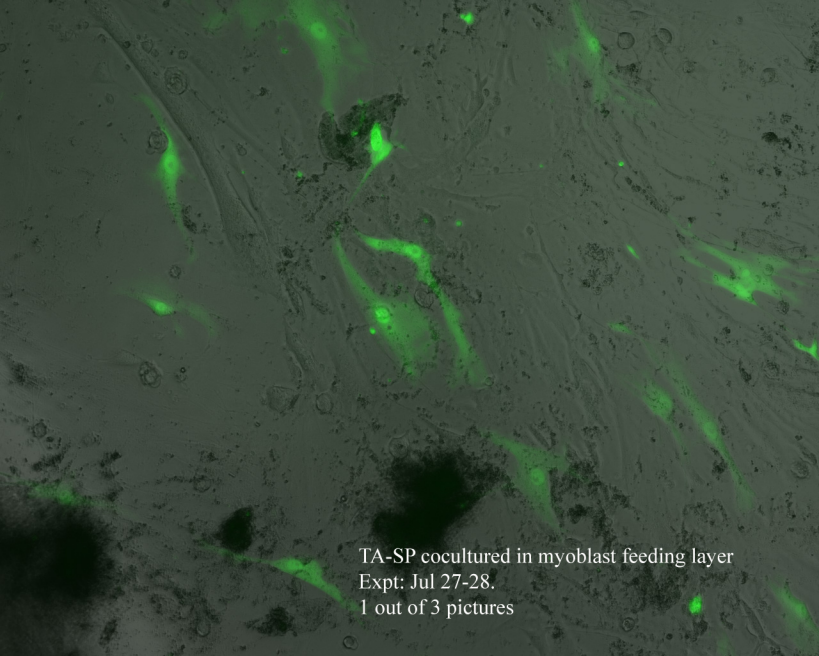




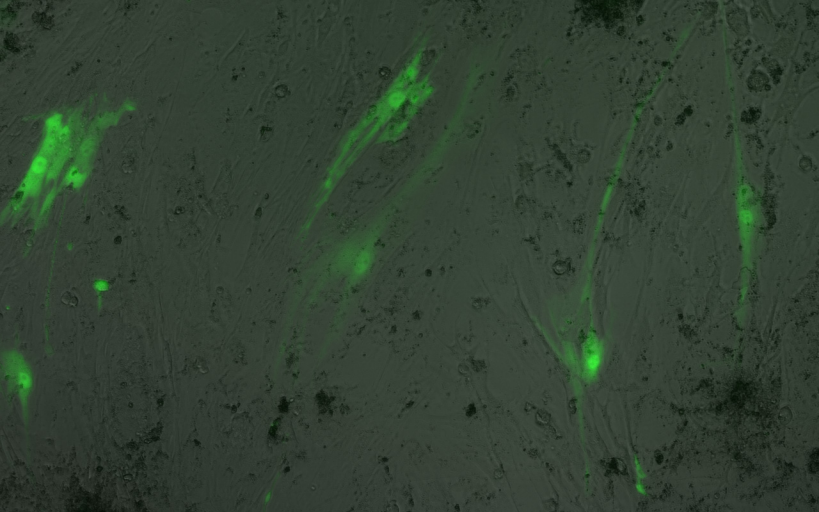
EOM-SP cocultured in myoblast feeding layer  
Expt: Jul 27-28.  
9 out of 10 pictures



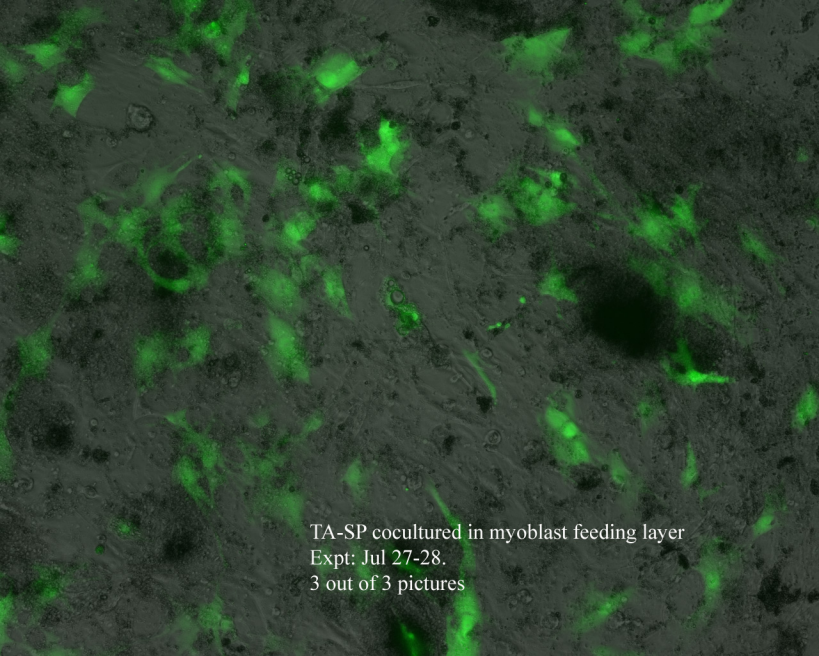
EOM-SP cocultured in myoblast feeding layer  
Expt: Jul 27-28.  
10 out of 10 pictures



TA-SP cocultured in myoblast feeding layer  
Expt: Jul 27-28.  
1 out of 3 pictures



TA-SP cocultured in myoblast feeding layer  
Expt: Jul 27-28.  
2 out of 3 pictures



TA-SP cocultured in myoblast feeding layer  
Expt: Jul 27-28.  
3 out of 3 pictures