

Supporting information for:
**Different intermediate populations formed by tazobactam, sulbactam,
and clavulanate reacting with SHV-1 β -lactamases: Raman
crystallographic evidence**

Matthew Kalp, Monica A. Totir, John D. Buynak and Paul R. Carey*

Contribution from Case Western Reserve University, Department of Biochemistry, 10900 Euclid Avenue, Cleveland, OH 44106 and Southern Methodist University, Department of Chemistry, PO Box 750314, Dallas, TX 75275-0314

paul.carey@case.edu

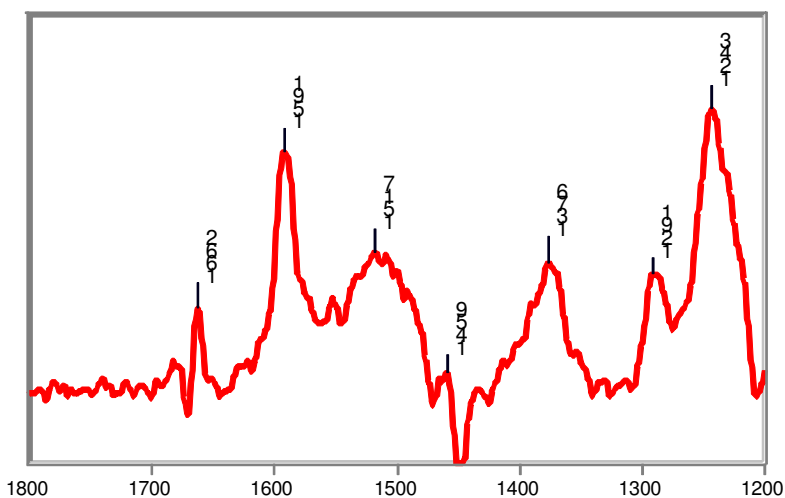


Figure S1. Raman difference spectra of the tazobactam/SHV E166A complex in H₂O at room temperature.

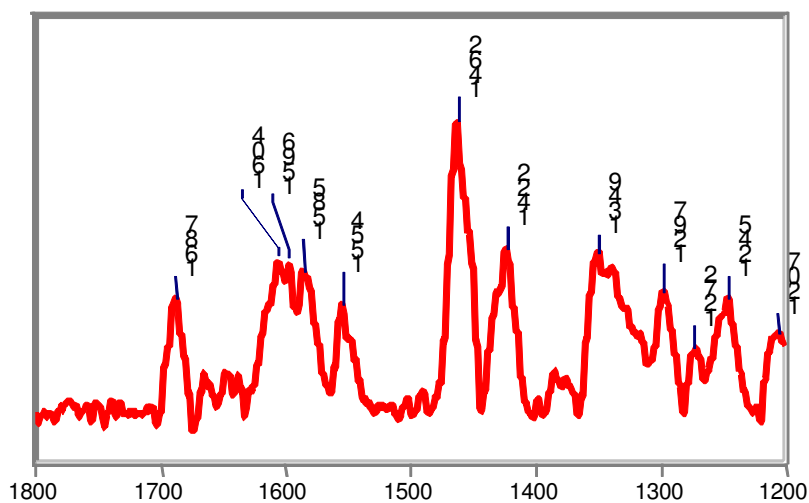


Figure S2. Raman difference spectra of the tazobactam/SHV S130G complex in H₂O at room temperature.

Reference 32. Frisch, M. J. T., G. W.; Schlegel, H. B.; Scuseria, G. E.; Robb, M. A.; Cheeseman, J. R.; Montgomery, Jr., J. A.; Vreven, T.; Kudin, K. N.; Burant, J. C.; Millam, J. M.; Iyengar, S. S.; Tomasi, J.; Barone, V.; Mennucci, B.; Cossi, M.; Scalmani, G.; Rega, N.; Petersson, G. A.; Nakatsuji, H.; Hada, M.; Ehara, M.; Toyota, K.; Fukuda, R.; Hasegawa, J.; Ishida, M.; Nakajima, T.; Honda, Y.; Kitao, O.; Nakai, H.; Klene, M.; Li, X.; Knox, J. E.; Liashenko, A.; Piskorz, P.; Komaromi, I.; Martin, R. L.; Fox, D. J.; Keith, T.; Al-Laham, M. A.; Peng, C. Y.; Nanayakkara, A.; Challacombe, M.; Gill, P. M. W.; Johnson, B.; Chen, W.; Wong, M. W.; Gonzalez, C.; and Pople, J. A *Gaussian 03*, Revision C.02; Gaussian, Inc: Wallingford CT, 2004. Hratchian, H. P.; Cross, J. B.; Bakken, V.; Adamo, C.; Jaramillo, J.; Gomperts, R.; Stratmann, R. E.; Yazyev, O.; Austin, A. J.; Cammi, R.; Pomelli, C.; Ochterski, J. W.; Ayala, P. Y.; Morokuma, K.; Voth, G. A.; Salvador, P.; Dannenberg, J. J.; Zakrzewski, V. G.; Dapprich, S.; Daniels, A. D.; Strain, M. C.; Farkas, O.; Malick, D. K.; Rabuck, A. D.; Raghavachari, K.; Foresman, J. B.; Ortiz, J. V.; Cui, Q.; Baboul, A. G.; Clifford, S.; Cioslowski, J.; Stefanov, B. B.; Liu, G.;