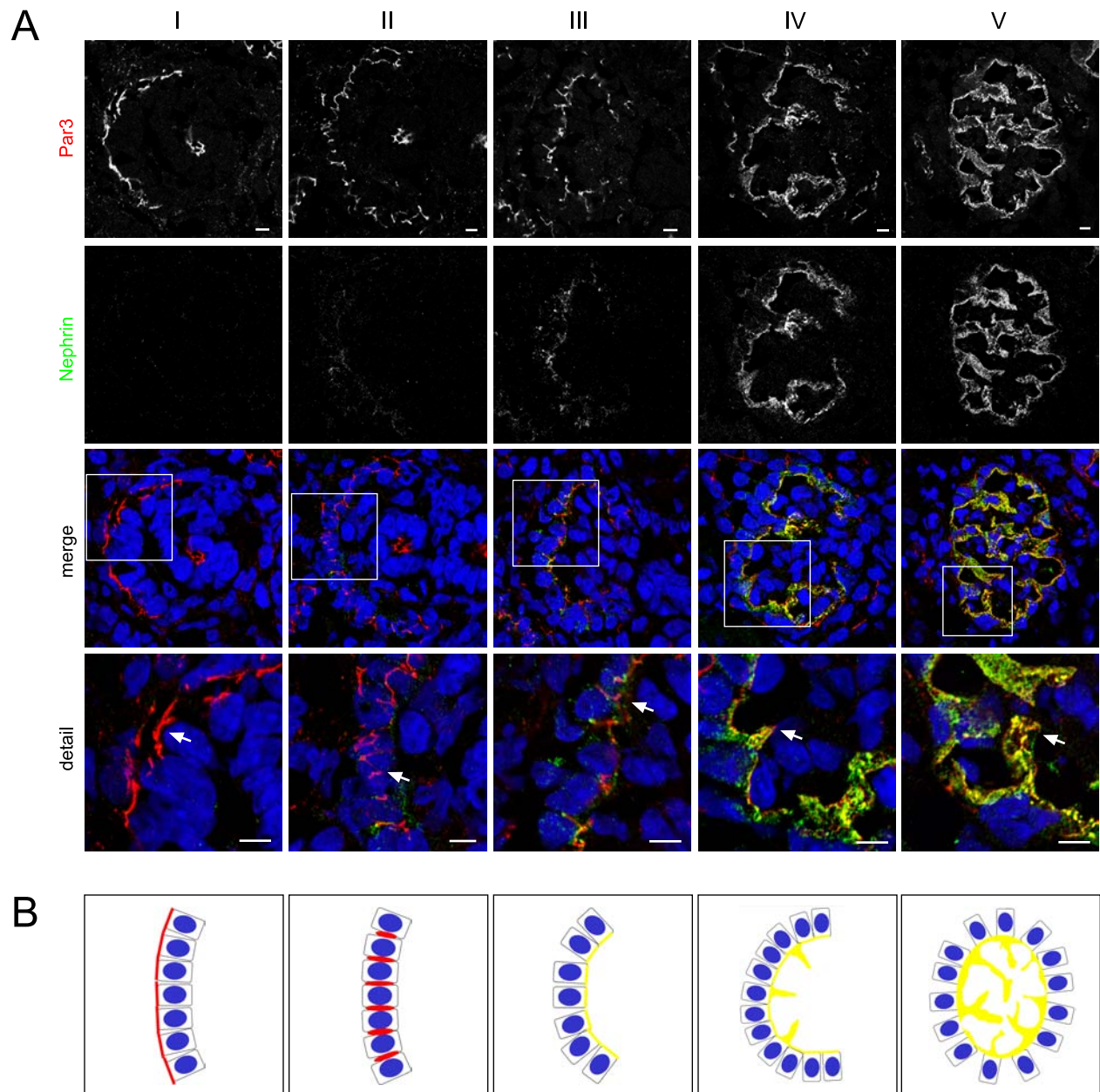


Supplemental figure 2



Nephrin and Par3 colocalization during glomerular development.

(A) Developmental co-staining of Par3 and nephrin in frozen kidney sections of newborn Wistar rat (day 1) illustrates the apico-basal translocation of Par3 and synchronized basolateral expression of Par3 and nephrin (II-III, arrows). Scale bars represent 5 μm (from left to right panel: developmental stages ranging from comma-shaped body (I), s-shaped body (II), capillary loop stage (III-IV) to a maturing glomerulus (V)). **(B)** Schematic illustration of the the coordinated translocation of Par3 and nephrin.