

Figure S4

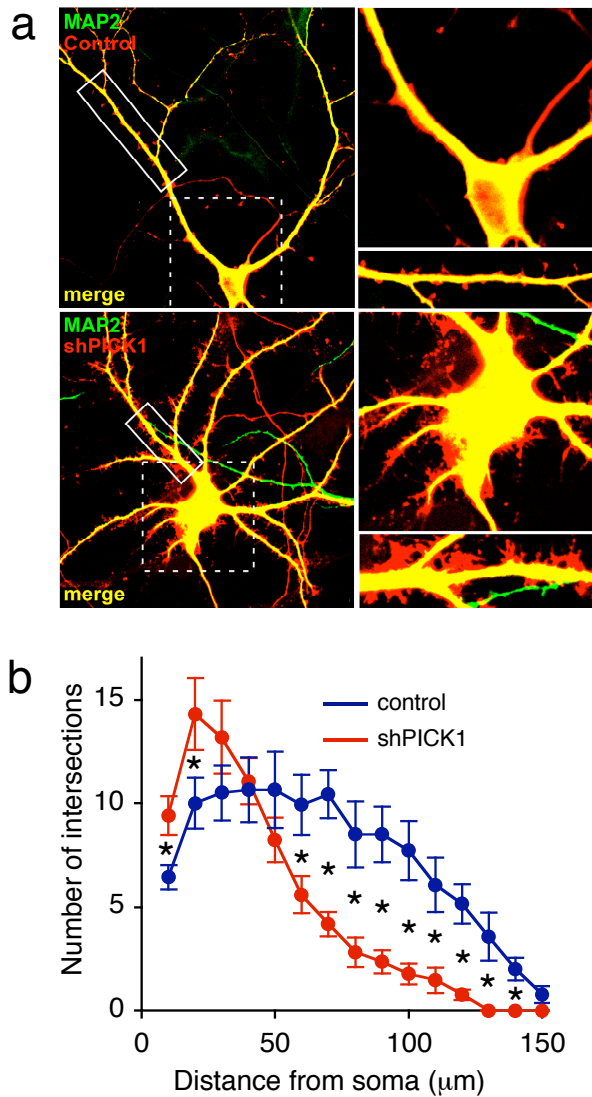


Figure S4

PICK1 knockdown increases the branching of MAP2-positive proximal dendrites.

- (a) Not all aberrant processes are MAP2-positive. Dissociated hippocampal neurons were transfected with mCherry-PICK1shRNA or mCherry control constructs at 10 DIV, prepared for immunocytochemistry 5 days later, and stained for MAP2 (green). mCherry fluorescence is shown in red. Merged images are shown.
- (b) Sholl analysis of MAP2 immunofluorescence for control and shPICK1-transfected neurons. Concentric circles with increasing radii were superimposed on MAP2 immunofluorescence images of neurons, and the number of processes crossing each radius was counted. $n=15$ cells, $*p<0.05$. Data are presented as mean \pm SEM.