

Figure S1

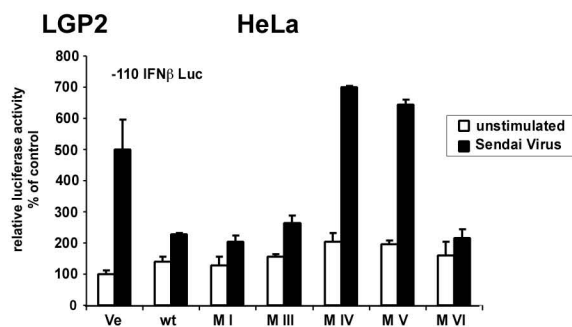


Figure S1: Luciferase reporter gene assay measuring the IFN β promotor activity in HeLa cells after transfection for expression of LGP2 wild type and mutant proteins. Cells were left unstimulated (white) or infected with 3×10^6 PFU Sendai virus (black) for 6h before harvest.

Figure S2

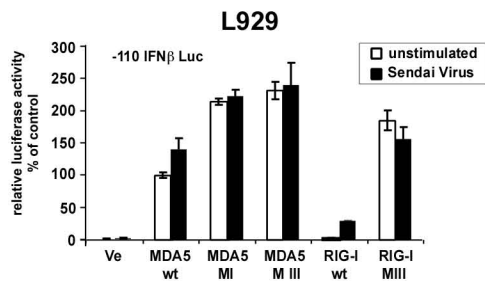


Figure S2: Luciferase reporter gene assay measuring the IFN β promotor activity in L929 cells after transfection for expression of MDA5 and RIG-I wild type and mutant proteins. Cells were left unstimulated (white) or infected with 3×10^6 PFU Sendai virus (black) for 6h before harvest.