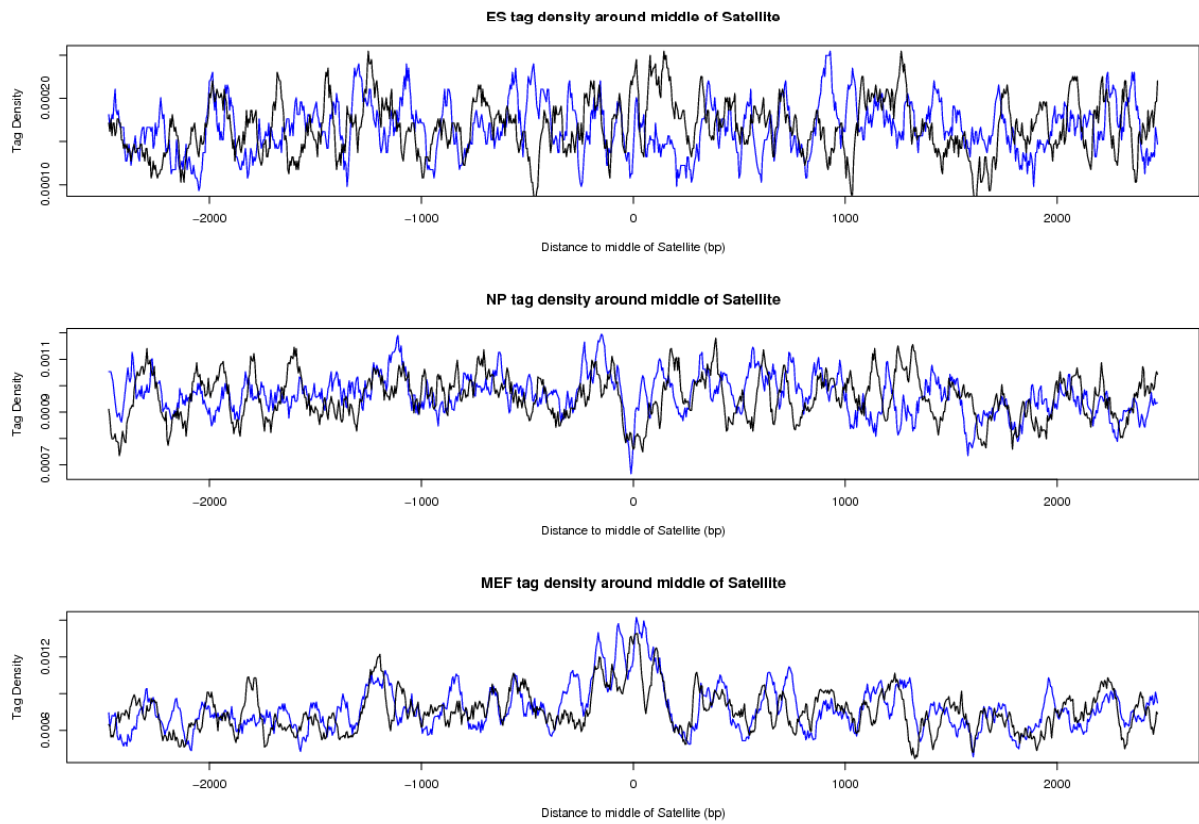


Supplementary Figure S1



Supplementary Figure S1. Comparative density profiles of tags mapped to forward strand (black lines) and reverse strand (blue lines) in a 5kbp window centered around middle of Satellite repeats. As the enrichment of tags in Satellite repeats were likely to be resulted from mapping issues and other random noise, no well-positioned fragment was expected, resulted in closely correlating density profile of forward tags and reverse tags.