

## Supplemental Tables

**Table 1. Characteristics of apoE-deficient mice with and without C2GlcNAcT-I**

Diet/period	Genotype	n	Body Weight (g)	White blood cells, × 10 <sup>6</sup> /ml	Monocytes, × 10 <sup>6</sup> /ml	Monocytes, % of the total
WD/3 months	C2GlcNAcT-I <sup>-/-</sup>	24	29.3 ± 6.6	3.8 ± 1.4	0.2 ± 0.09	5.7 ± 1.7%
	C2GlcNAcT-I <sup>+/+</sup>	27	26.9 ± 5.3	2.7 ± 1.2	0.2 ± 0.09	6.1 ± 2.7%
CD/6 months	C2GlcNAcT-I <sup>-/-</sup>	19	30.5 ± 6.8	8.3 ± 1.5	0.2 ± 0.06	2.8 ± 0.6%
	C2GlcNAcT-I <sup>+/+</sup>	26	27.9 ± 3.6	8.7 ± 0.7	0.3 ± 0.06	3.5 ± 0.8%

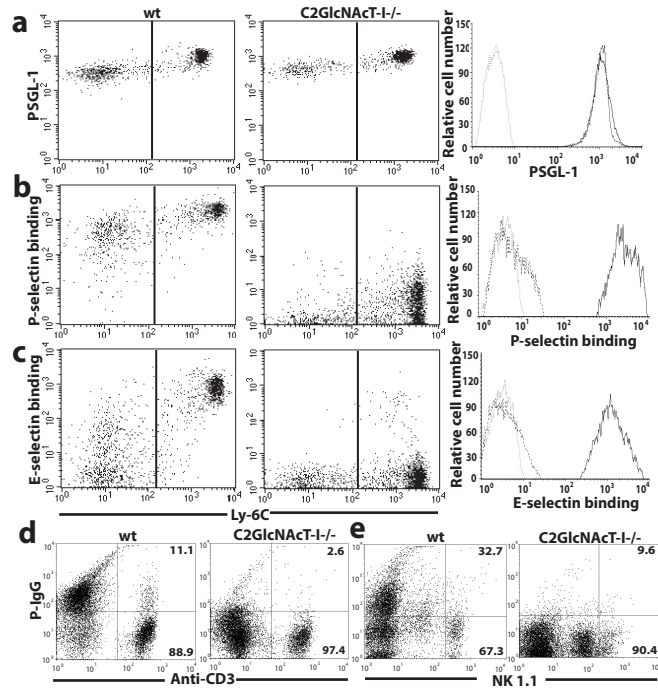
Mice were maintained on Western diet for 3 months or on standard chow diet for 6 months. Values are mean ± SEM. n represents the number of animals evaluated in each group. No statistical difference in evaluated parameters was found in mice from matched groups.

**Table 2. Plasma Lipid profiles in apoE<sup>-/-</sup> mice with and without C2GlcNAcT-I**

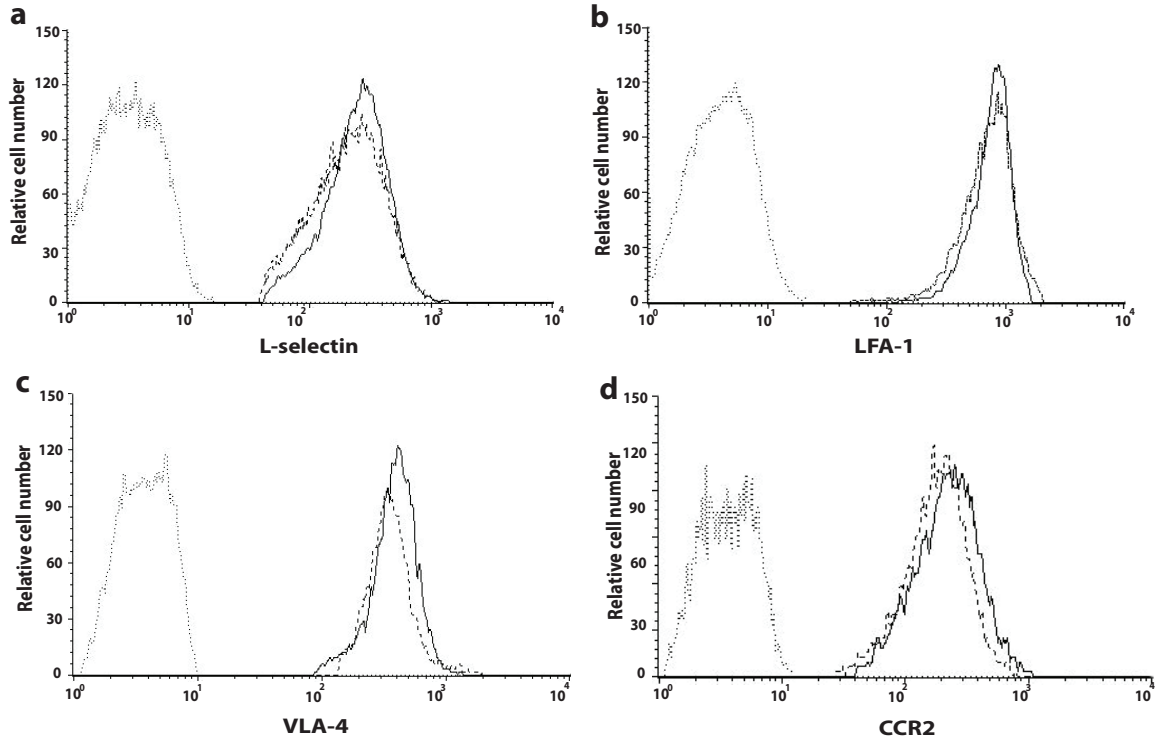
Diet/period	Genotype	n	TC, mg/dl	TG, mg/dl	HDL-C, mg/dl	LDL-C, mg/dl	VLDL-C, mg/dl
WD/3 months	C2GlcNAcT-I <sup>-/-</sup>	13	668 ± 238	63 ± 19	111 ± 59	405 ± 157	13 ± 4
	C2GlcNAcT-I <sup>+/+</sup>	13	760 ± 131	75 ± 27	172 ± 47	556 ± 99	15 ± 5
CD/6 months	C2GlcNAcT-I <sup>-/-</sup>	13	403 ± 125	61 ± 26	90 ± 40	262 ± 64	12 ± 5
	C2GlcNAcT-I <sup>+/+</sup>	14	349 ± 81	72 ± 25	103 ± 34	234 ± 52	14 ± 5

TC indicates total plasma cholesterol; TG, total plasma triglycerides; HDL-C, HDL-cholesterol; LDL-C, LDL-cholesterol; VLDL-C, VLDL-cholesterol. Mice were fed a western diet for 3 months or a chow diet for 6 months. Values are mean ± SEM. n represents the numbers of animals evaluated in each group. No statistical difference in the levels of serum lipids was found between matched groups.

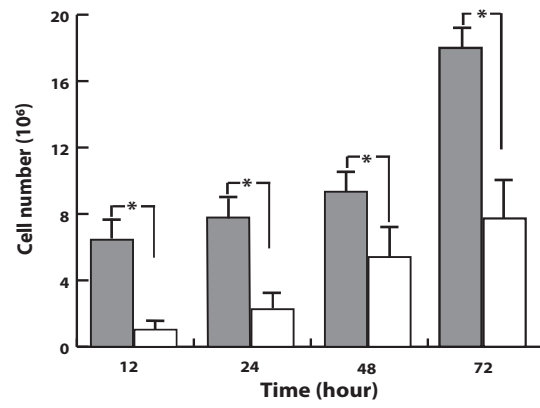
Figure I



**Figure II**



**Figure III**



**Figure IV**

Mouse blood Ly6C<sup>hi</sup> monocytes

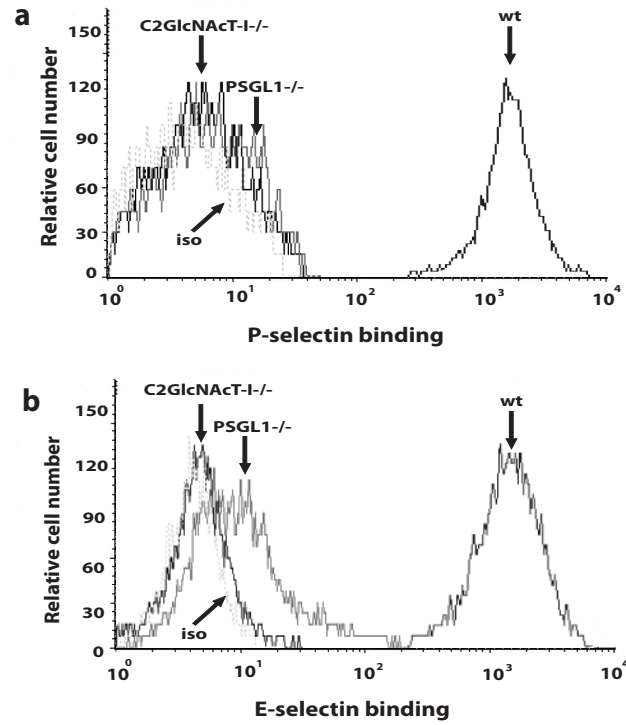
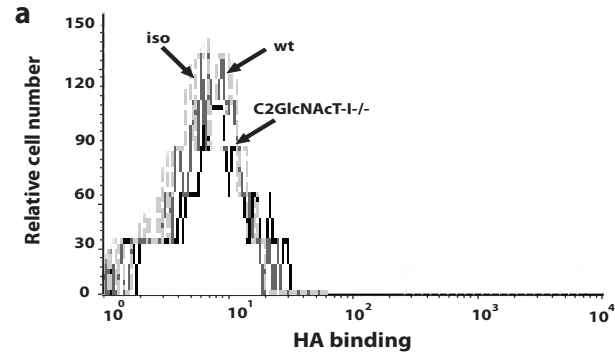


Figure V

Mouse blood Ly6C<sup>hi</sup> monocytes



Mouse peritoneal macrophages

