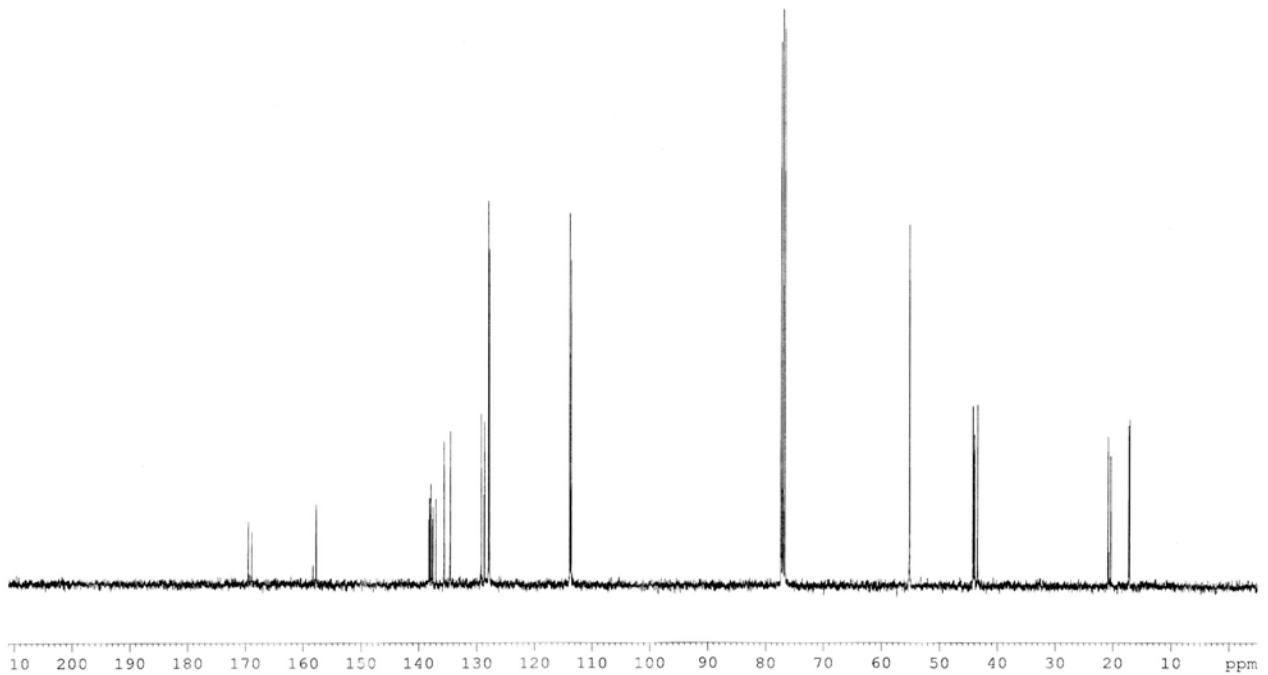
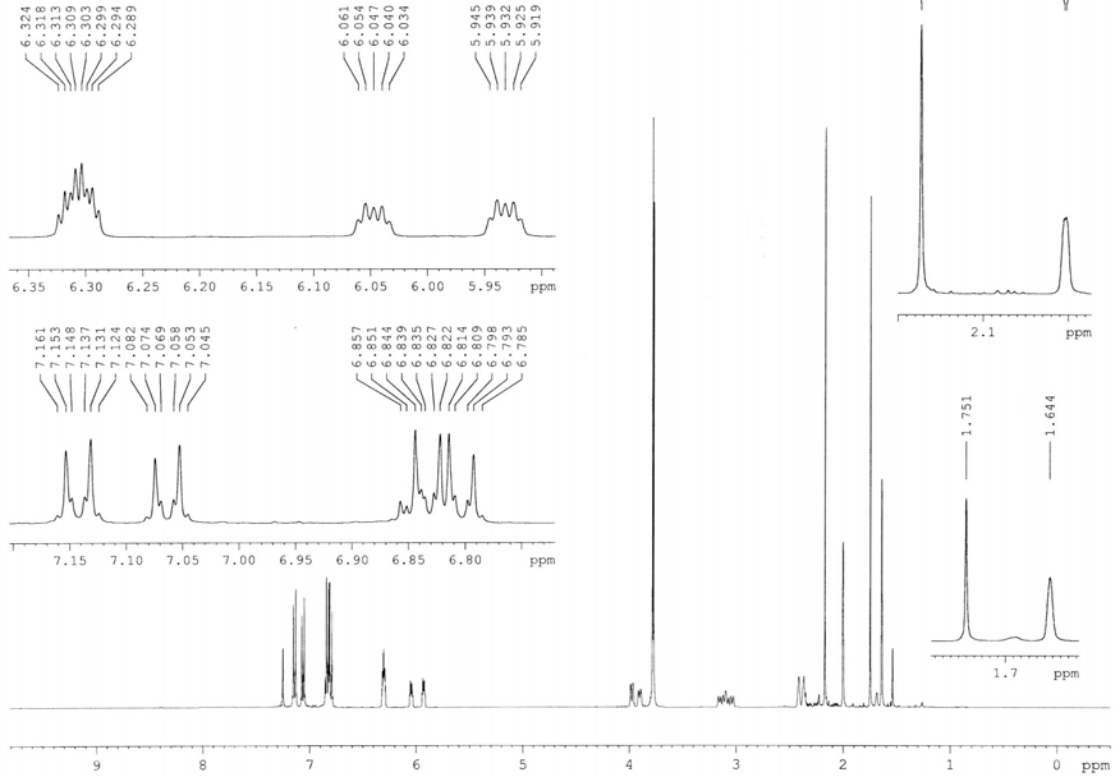
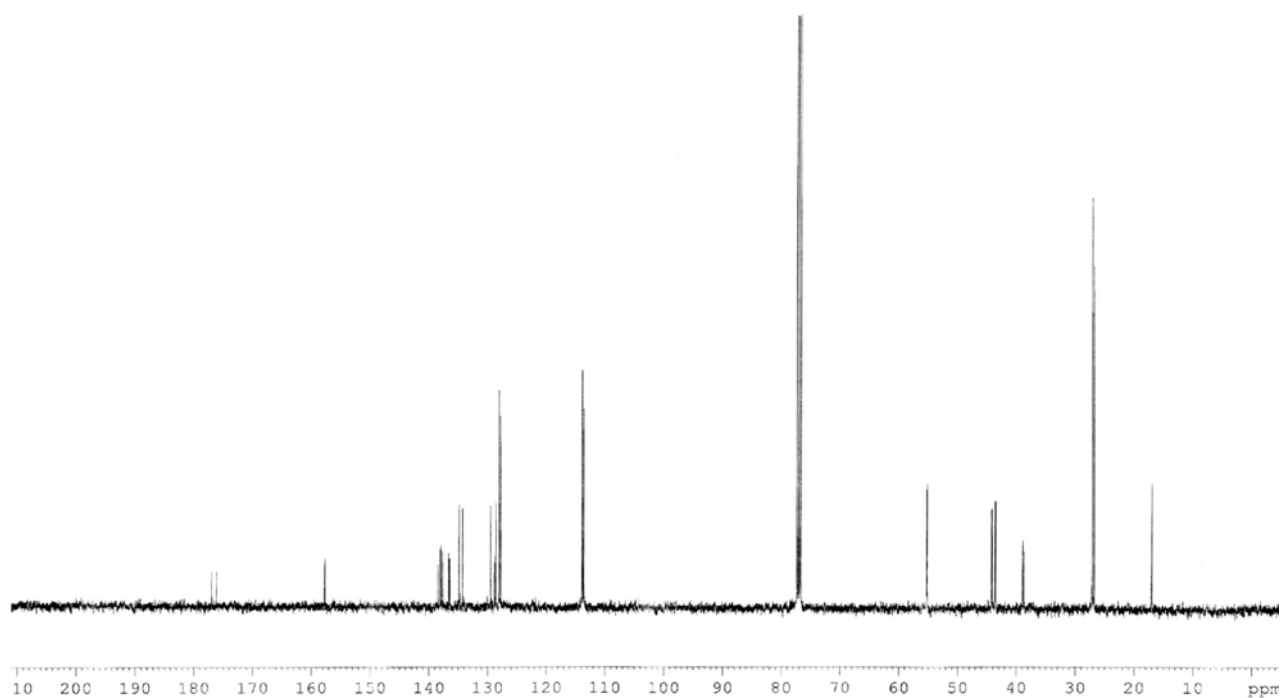
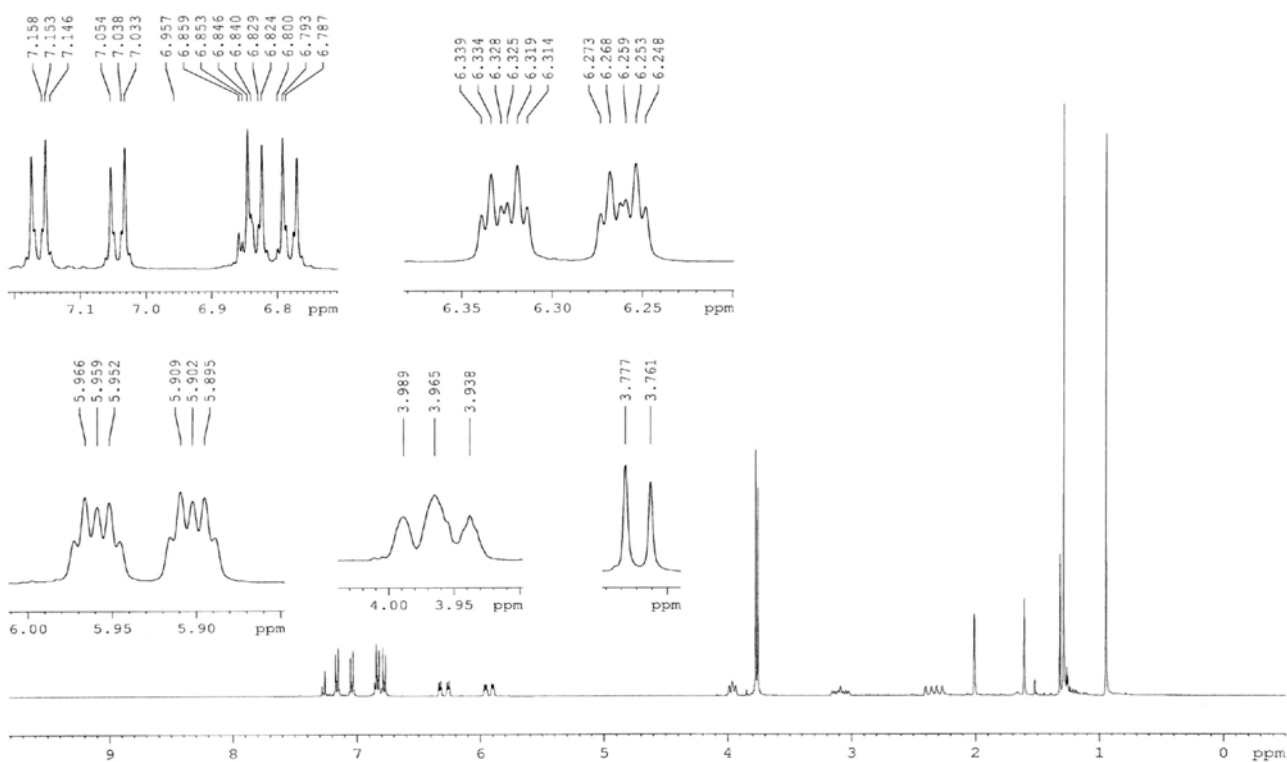
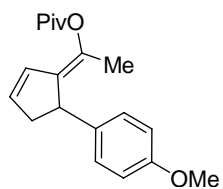
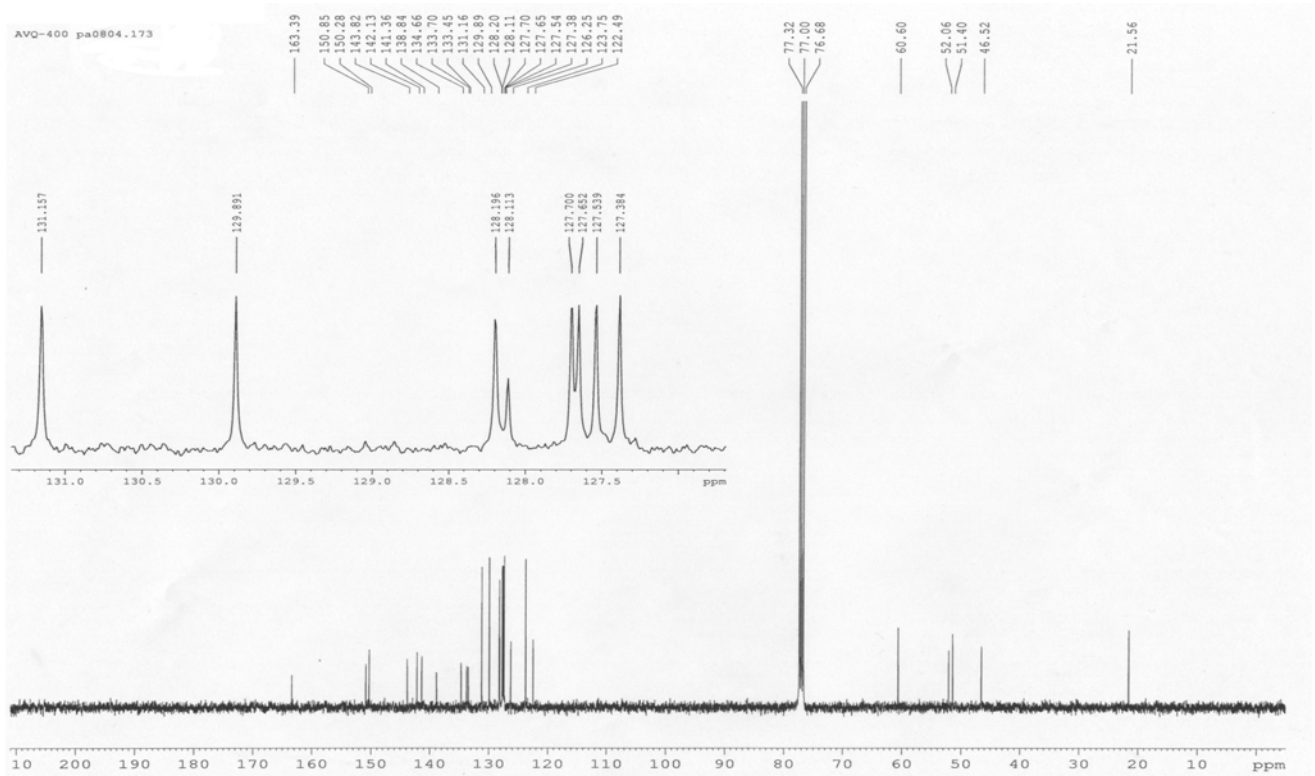
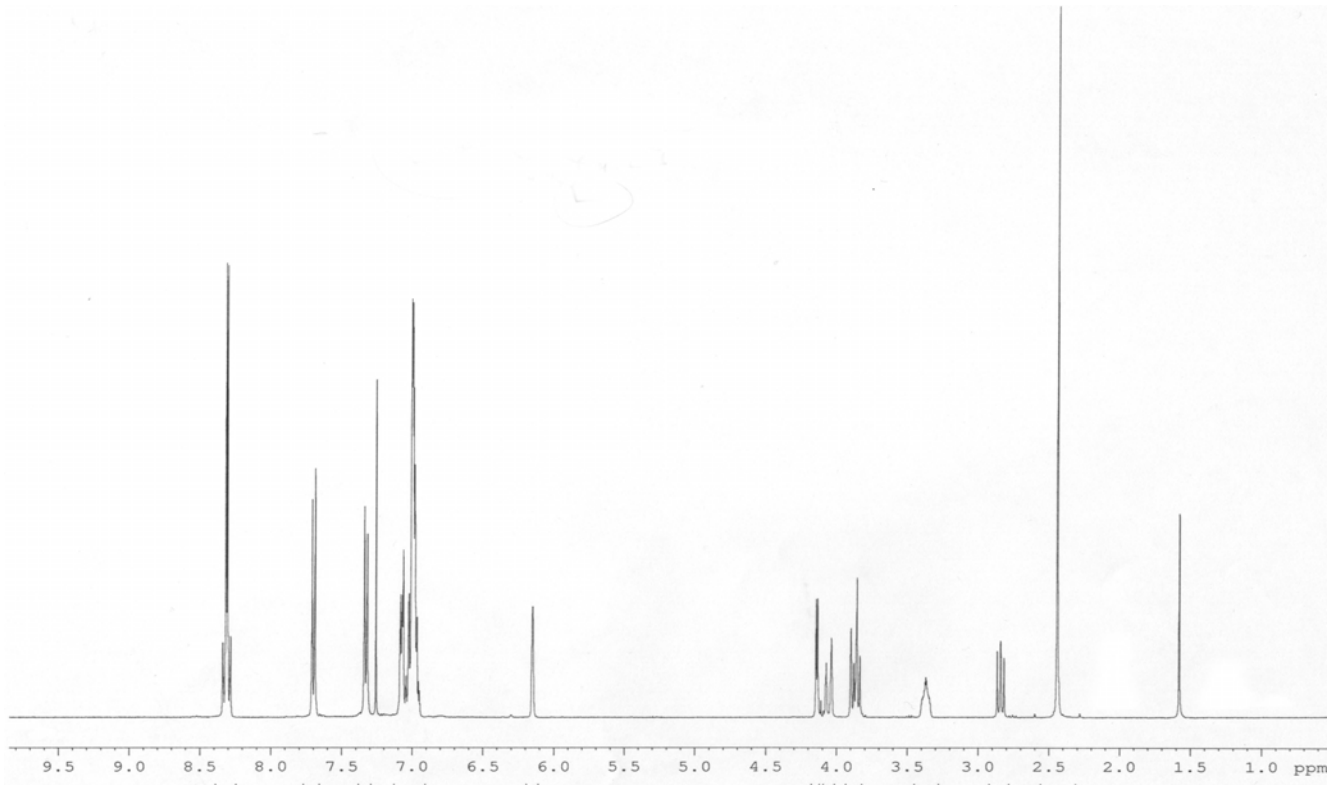
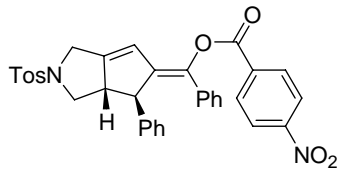
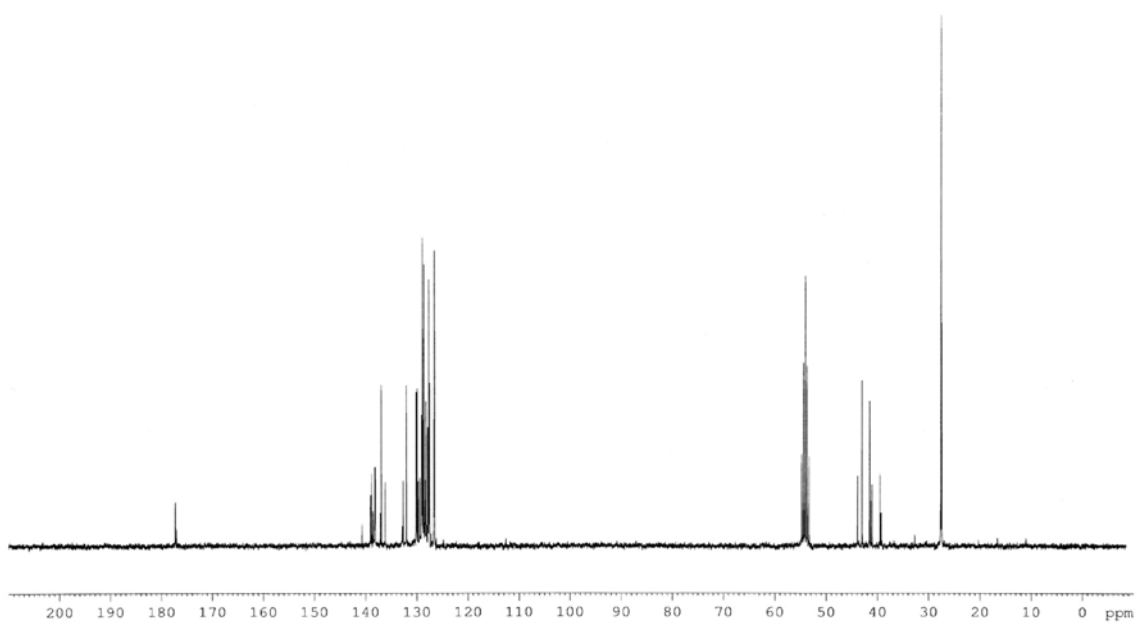
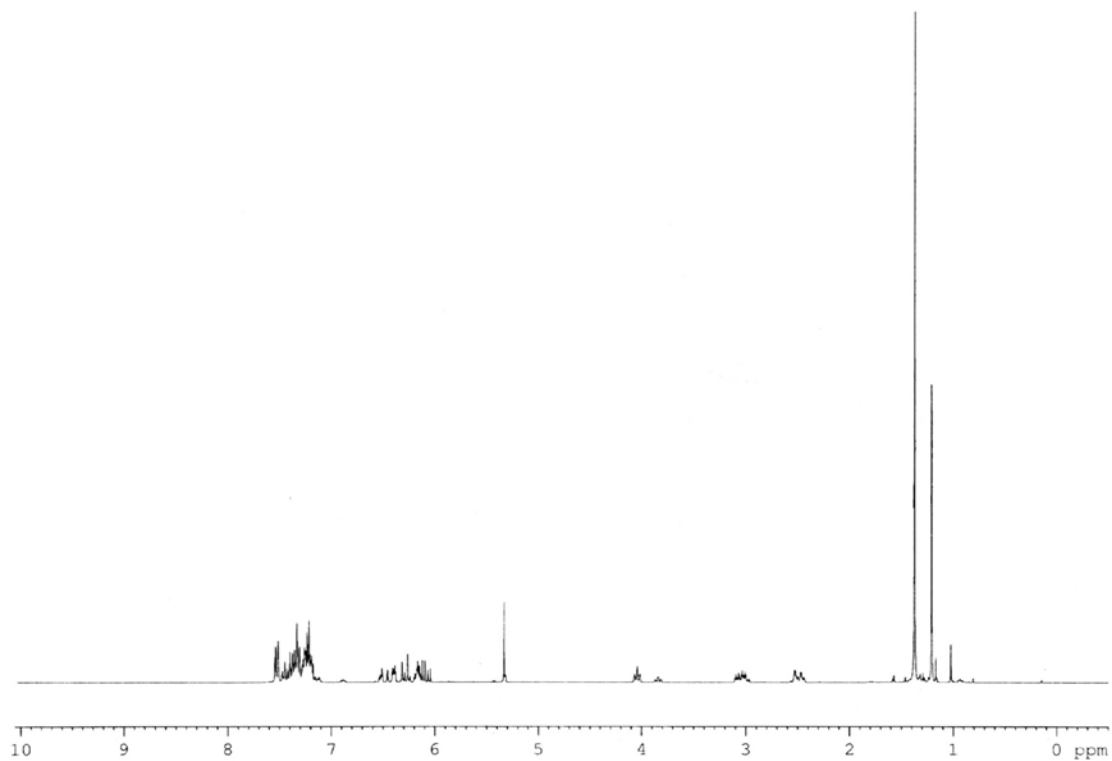
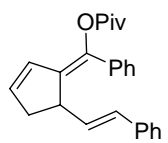


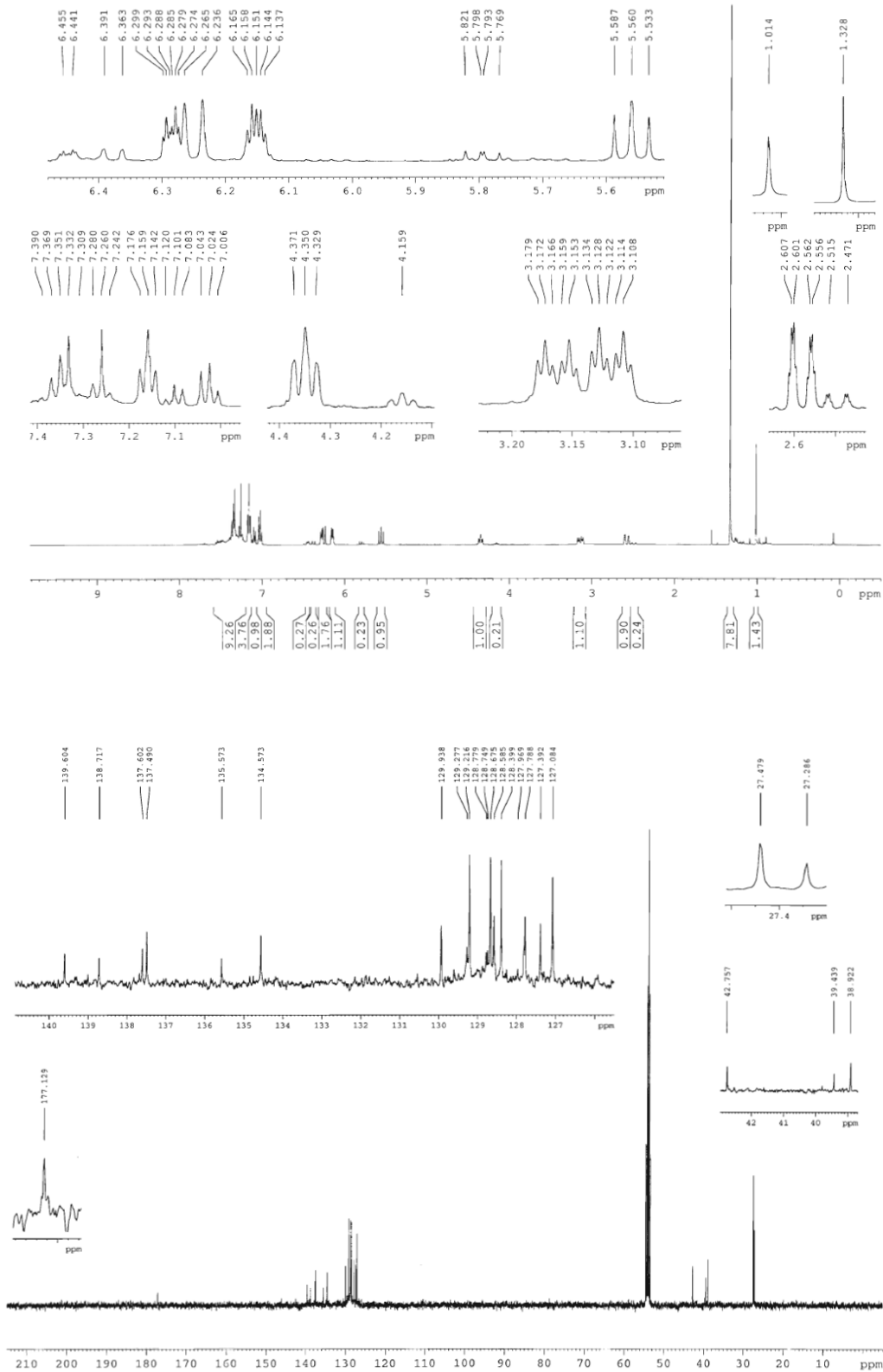
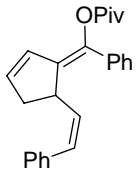
VQ-400 pa0808.053

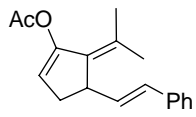




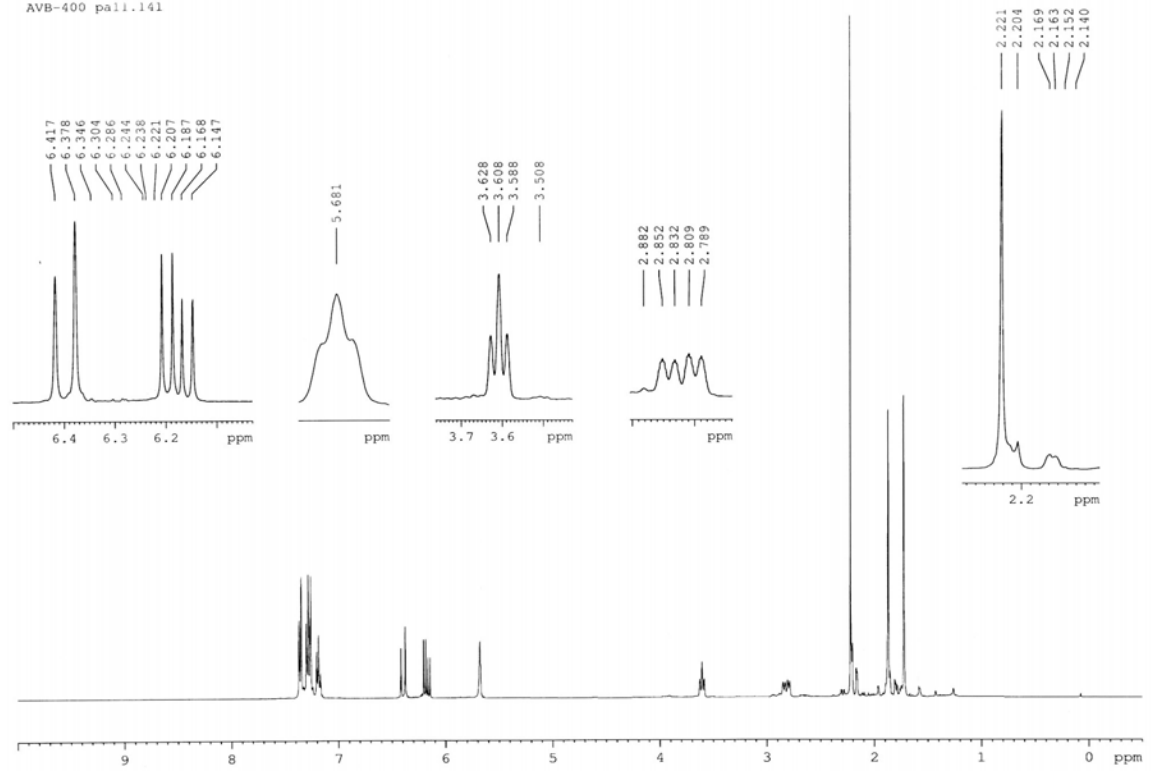




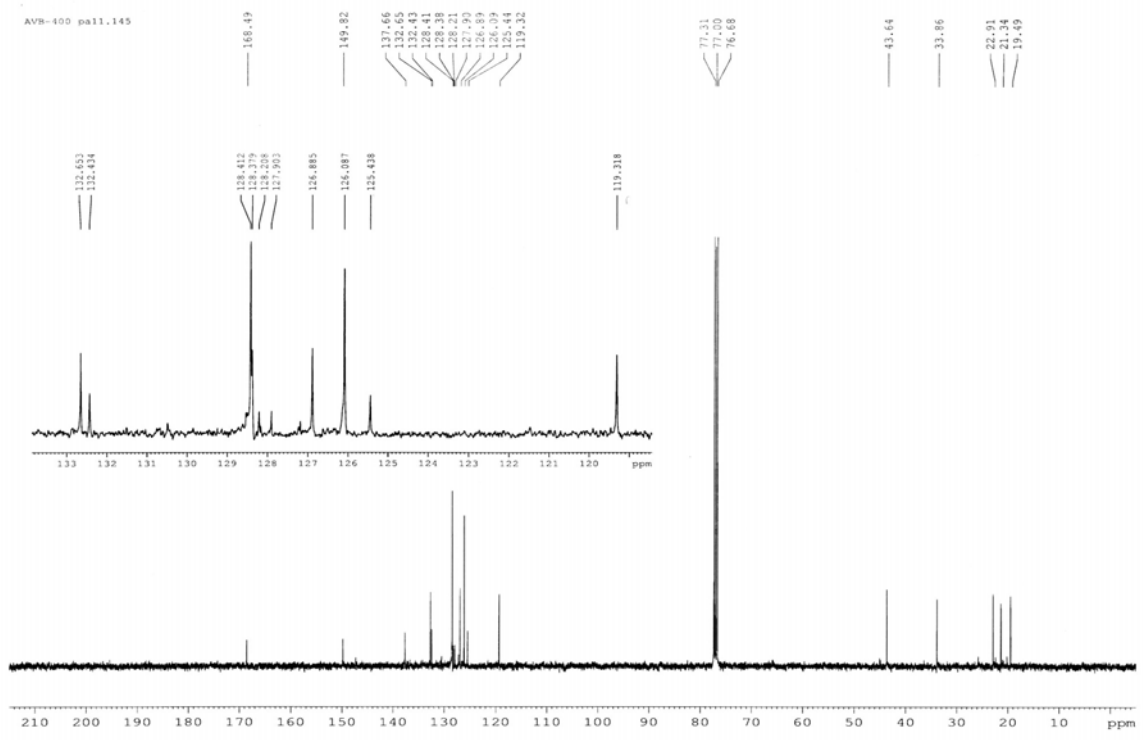




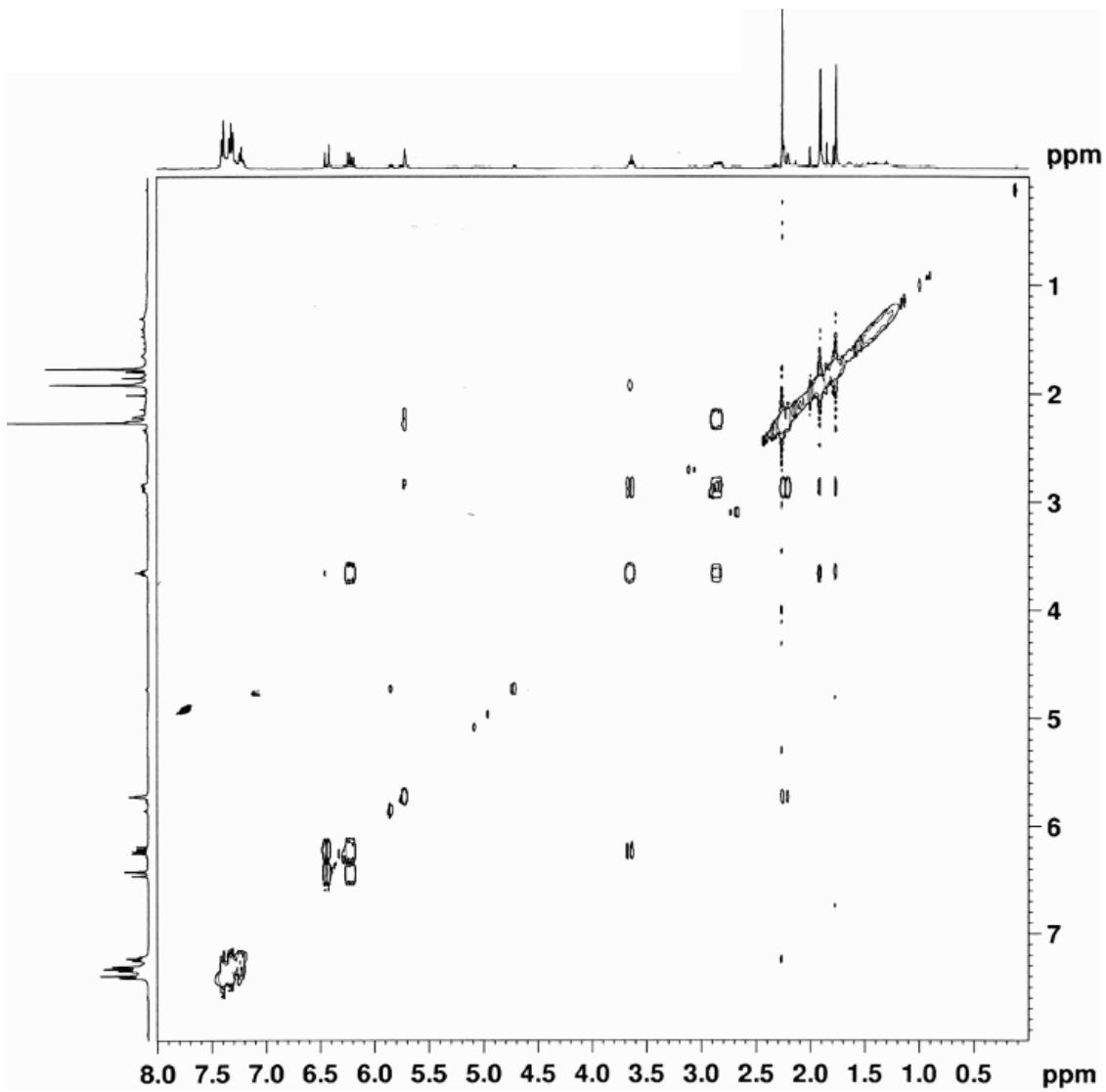
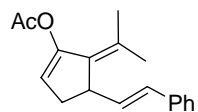
AVB-400 pa11.141



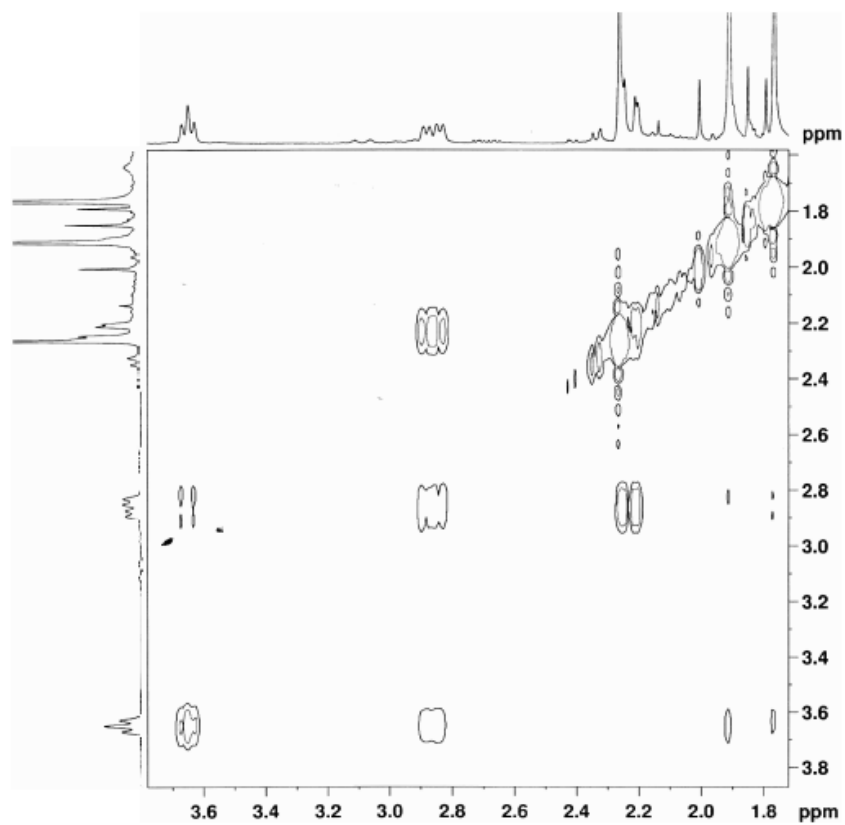
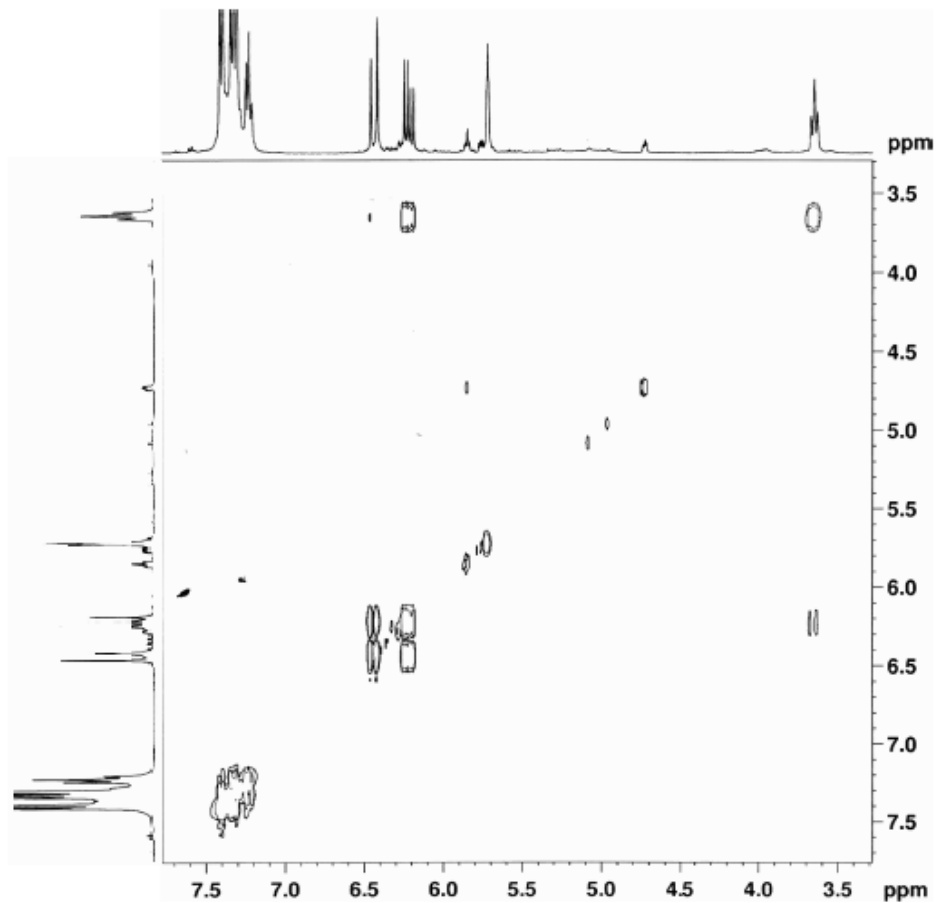
AVB-400 pa11.145



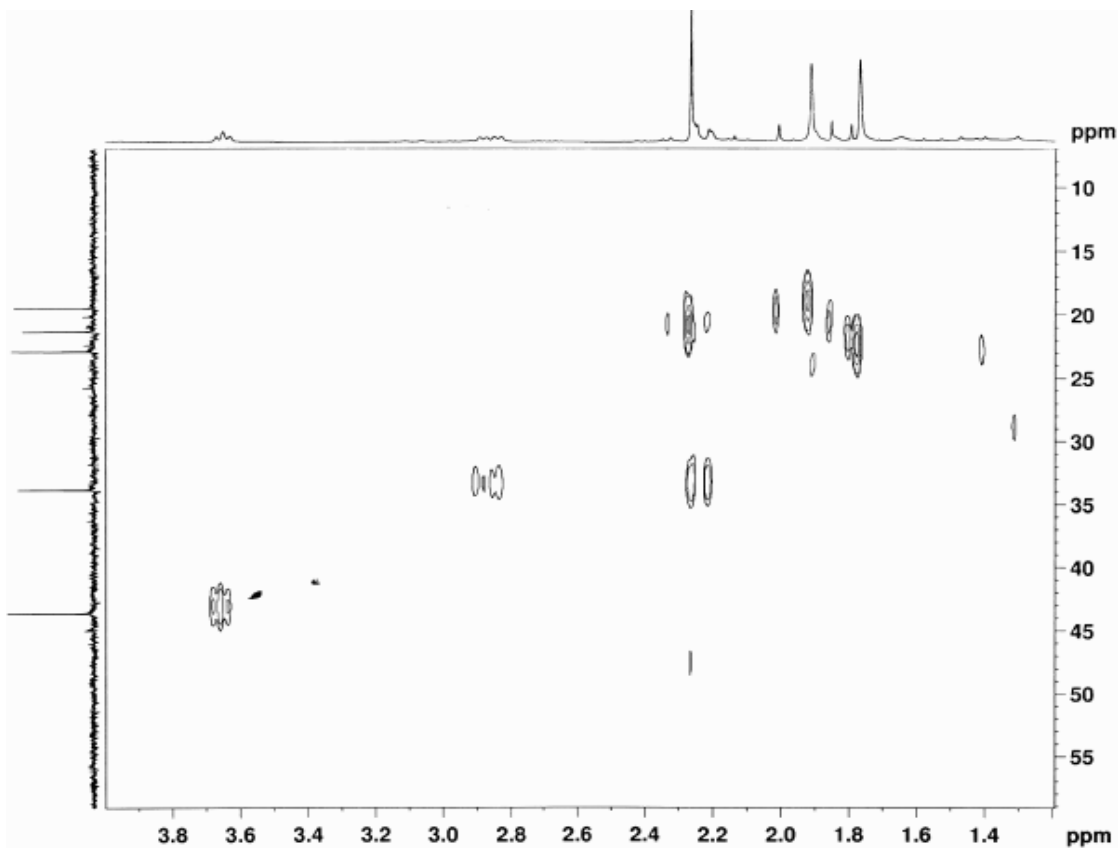
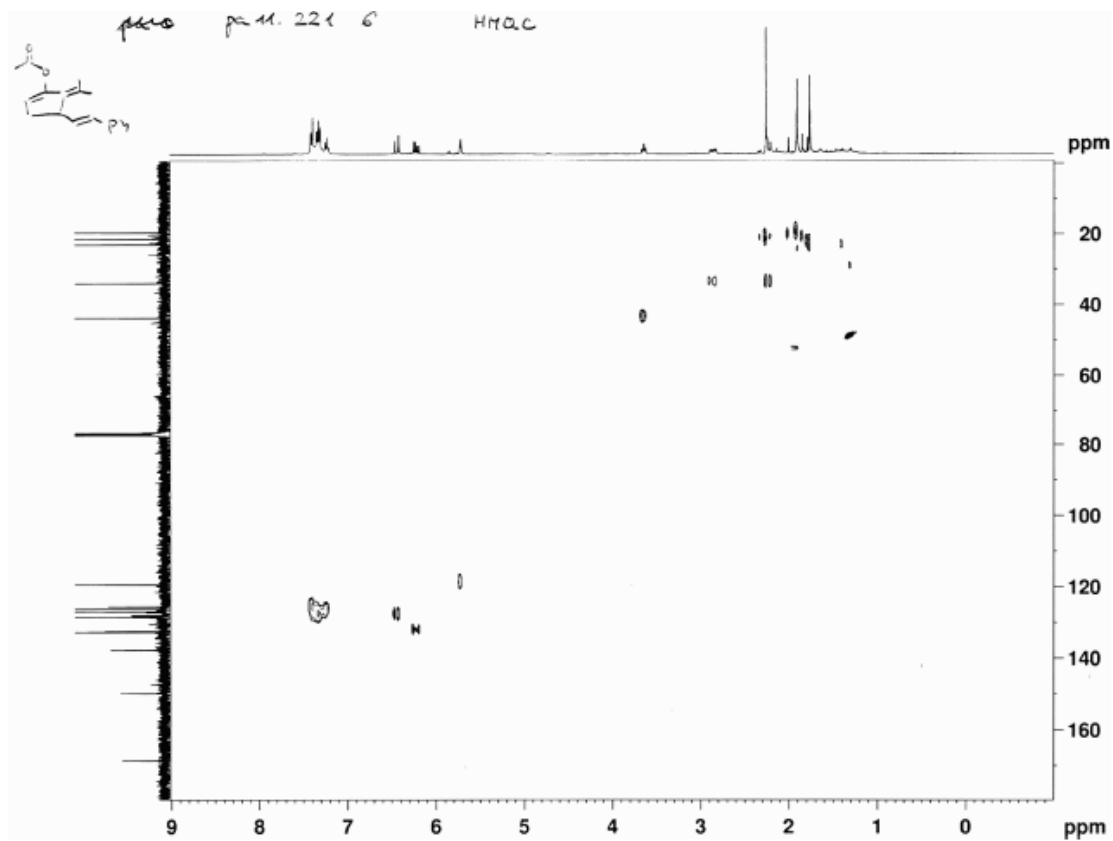
2D studies on cyclopentene 36: COSY

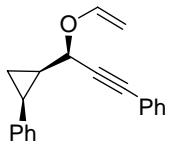


2D studies on cyclopentene 36: COSY

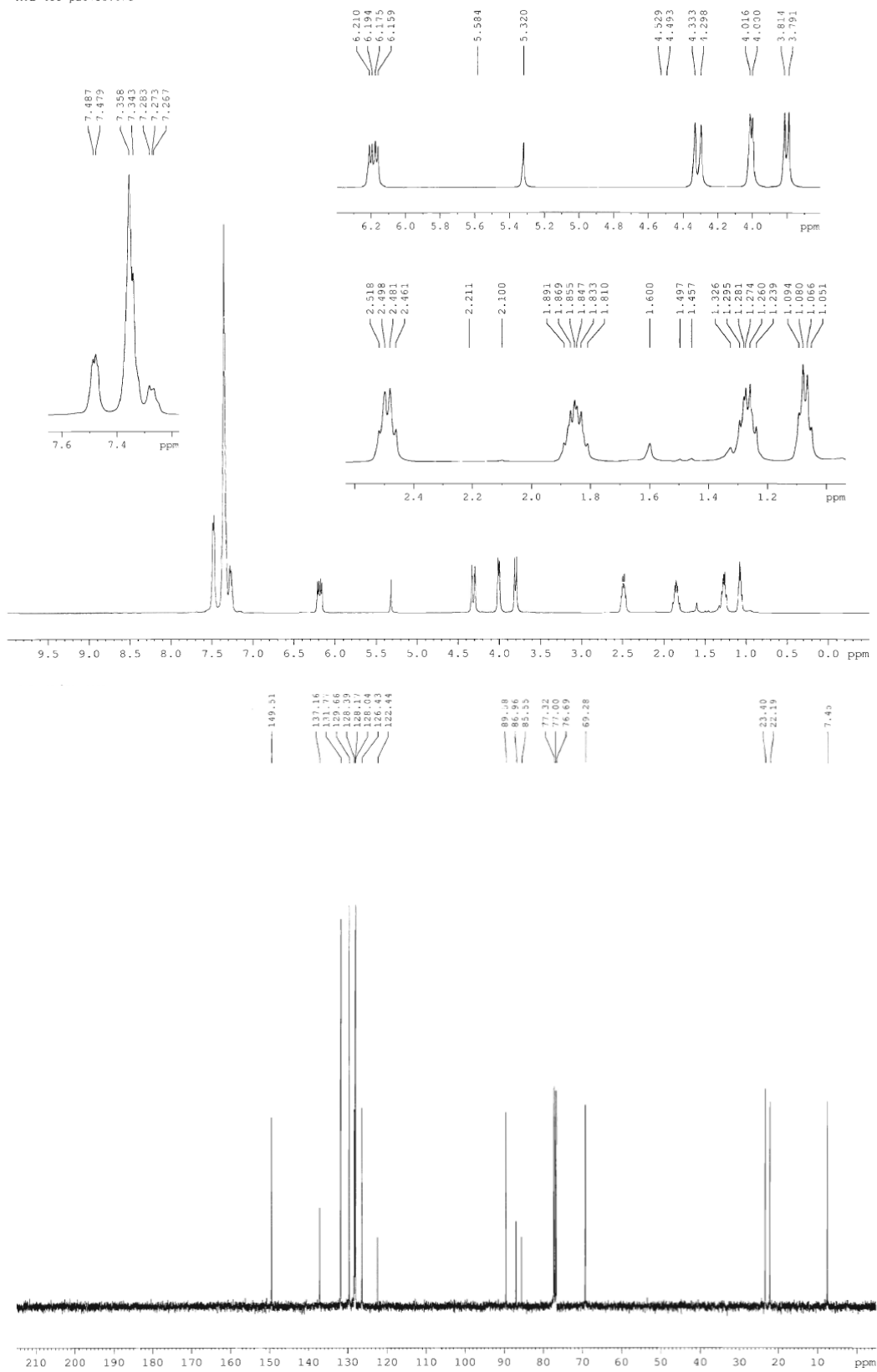


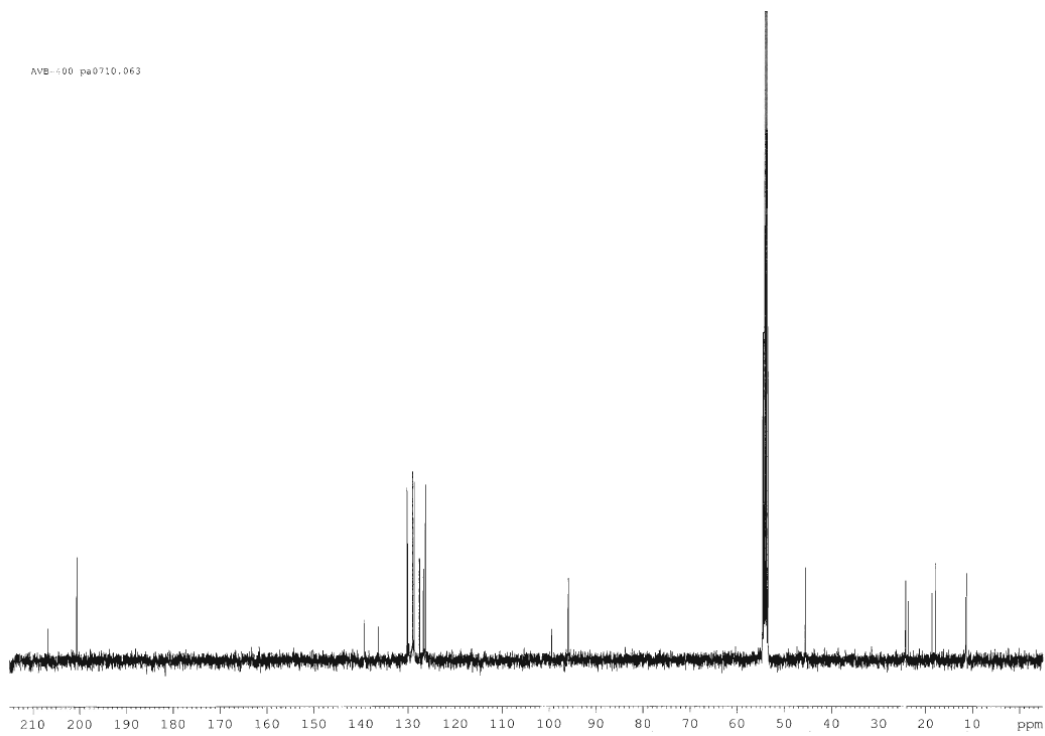
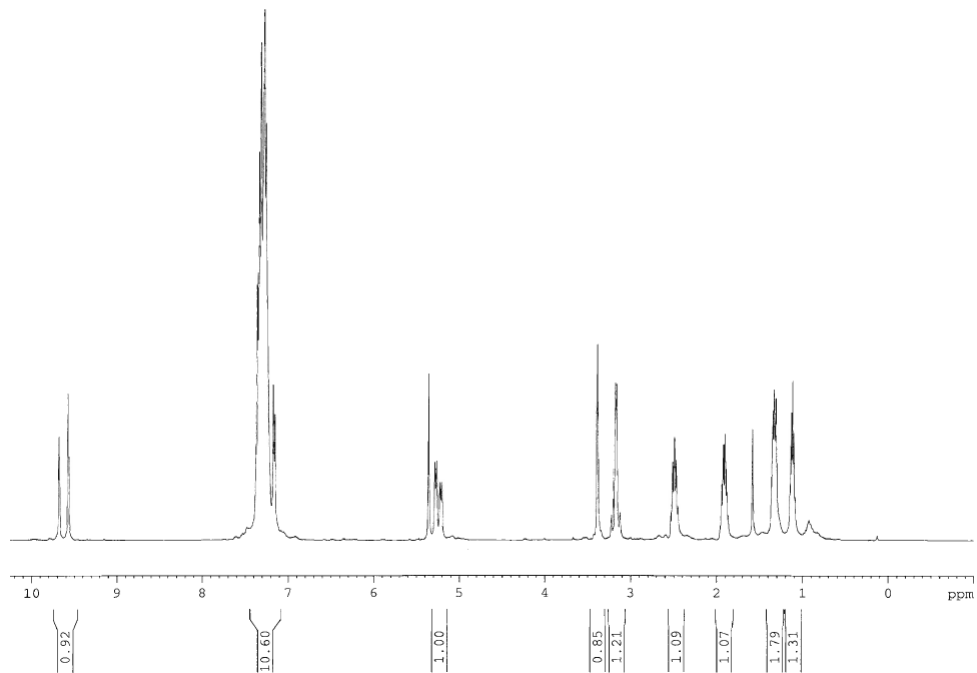
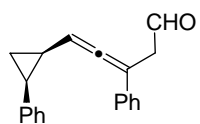
2D studies on cyclopentene 36: HMQC

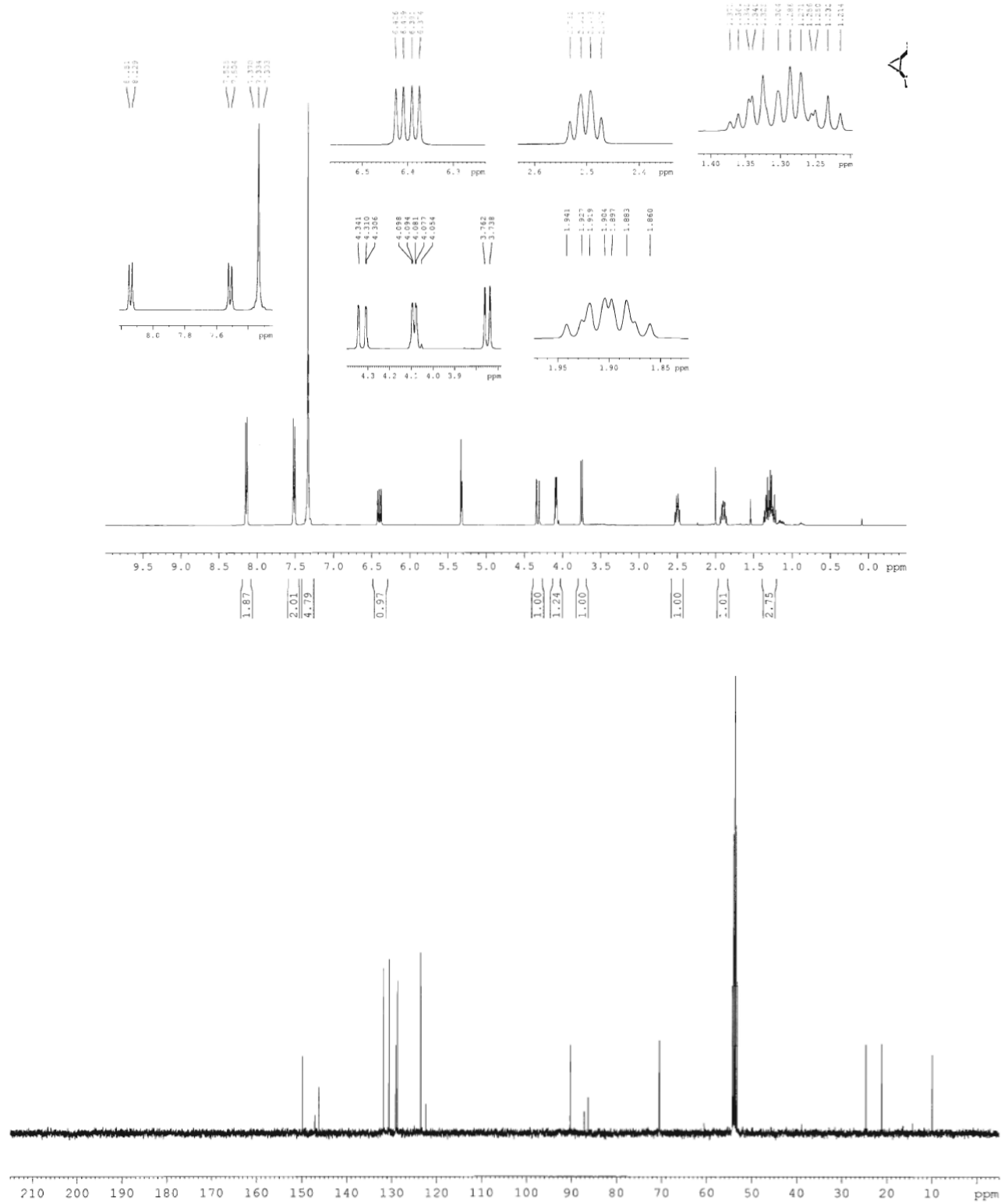
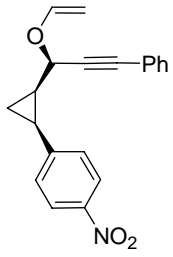


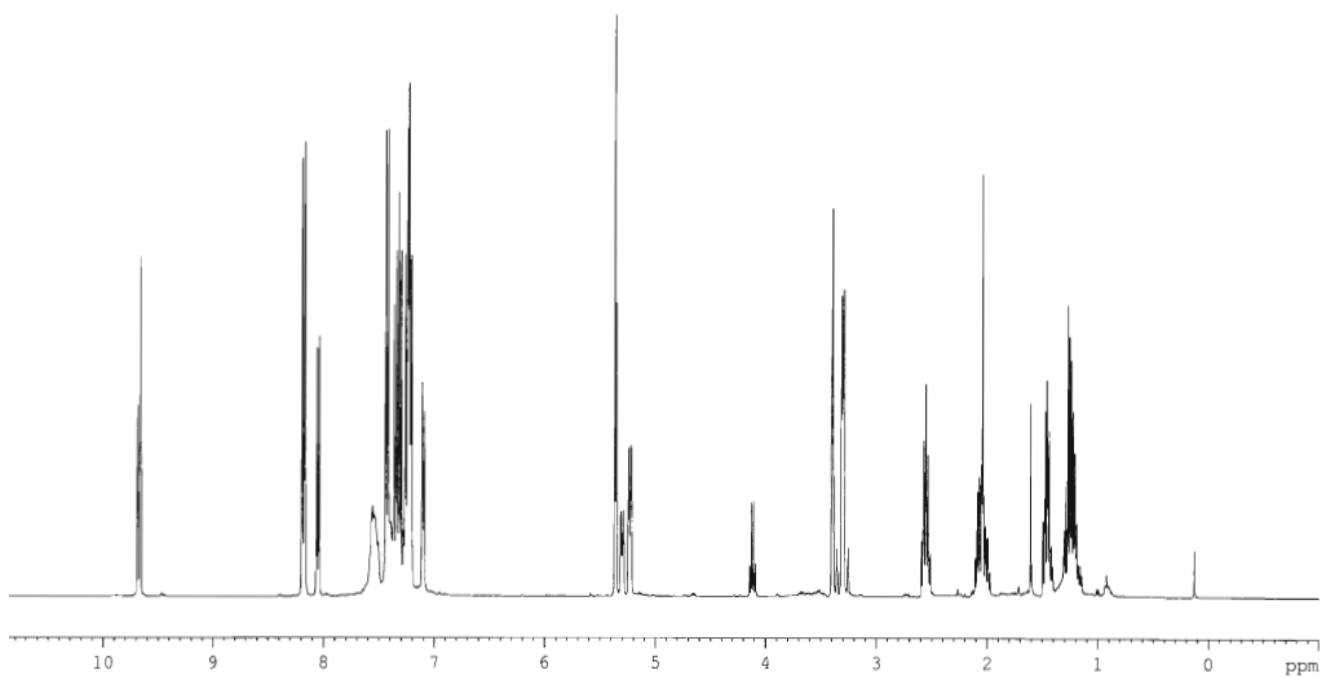
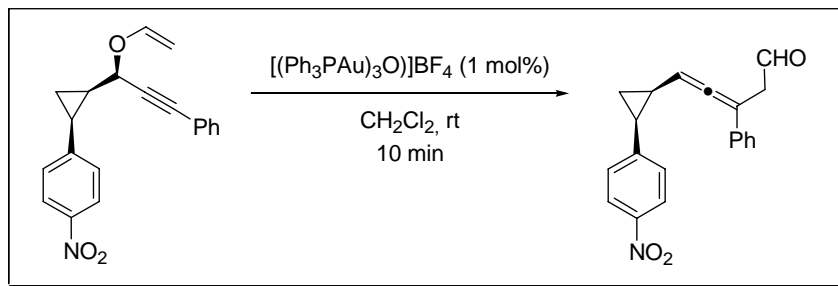


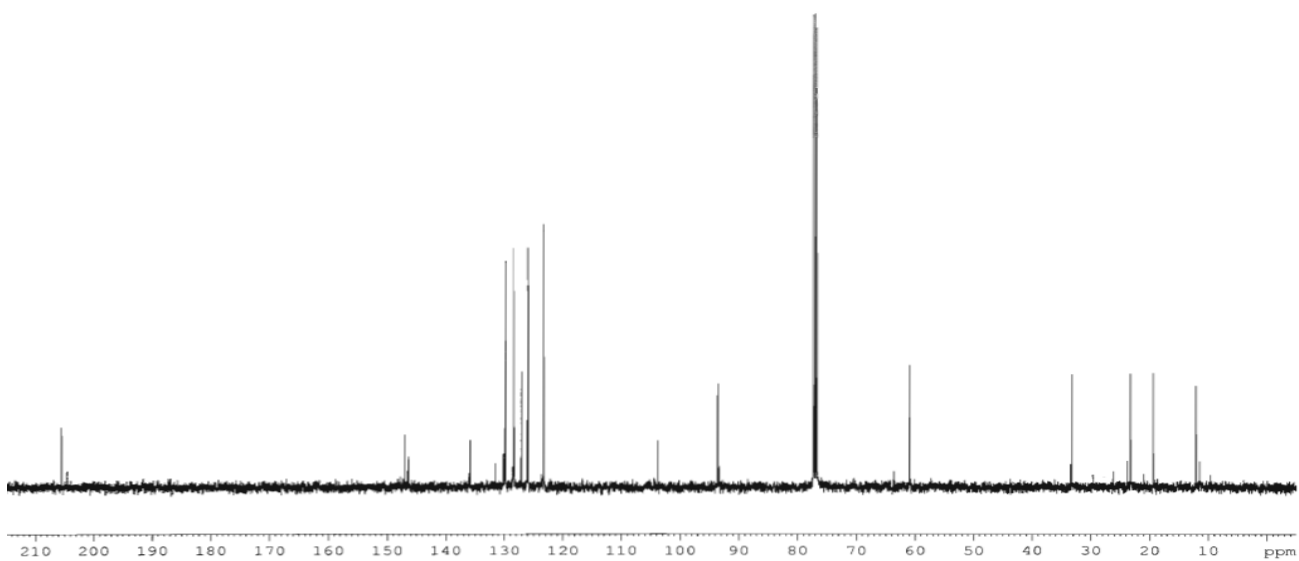
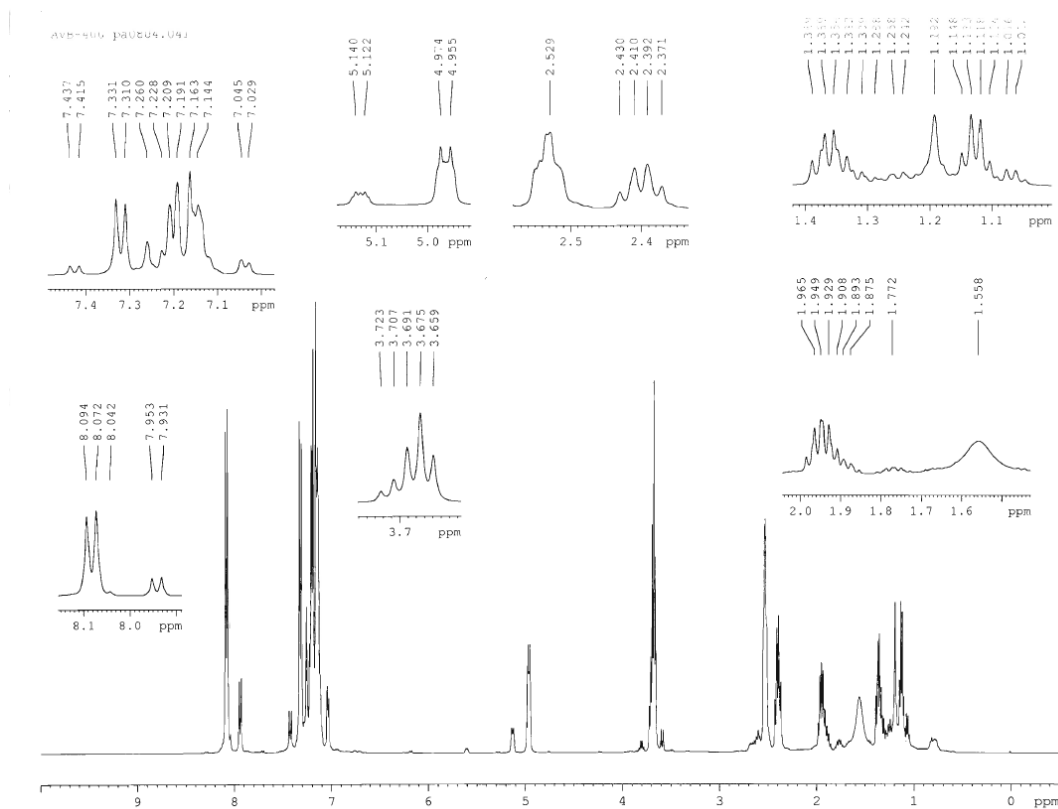
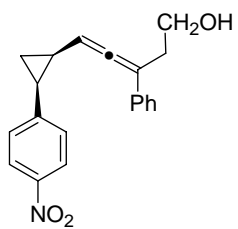
AVB- 400 pa0710.0:1

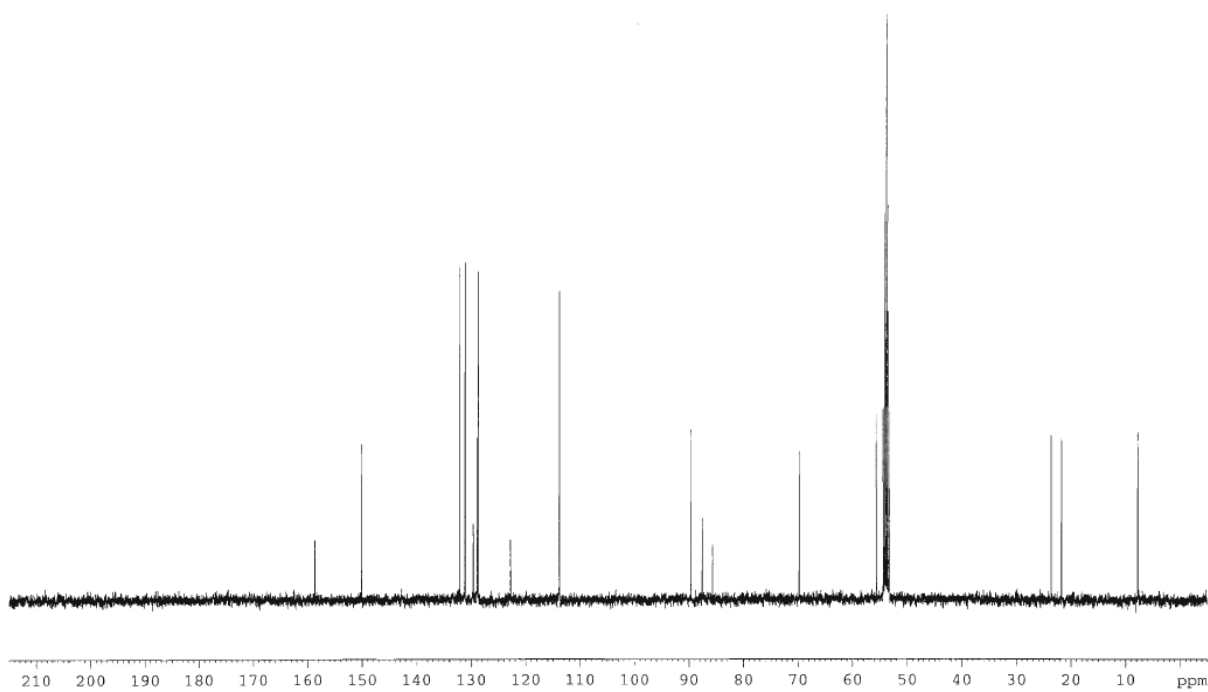
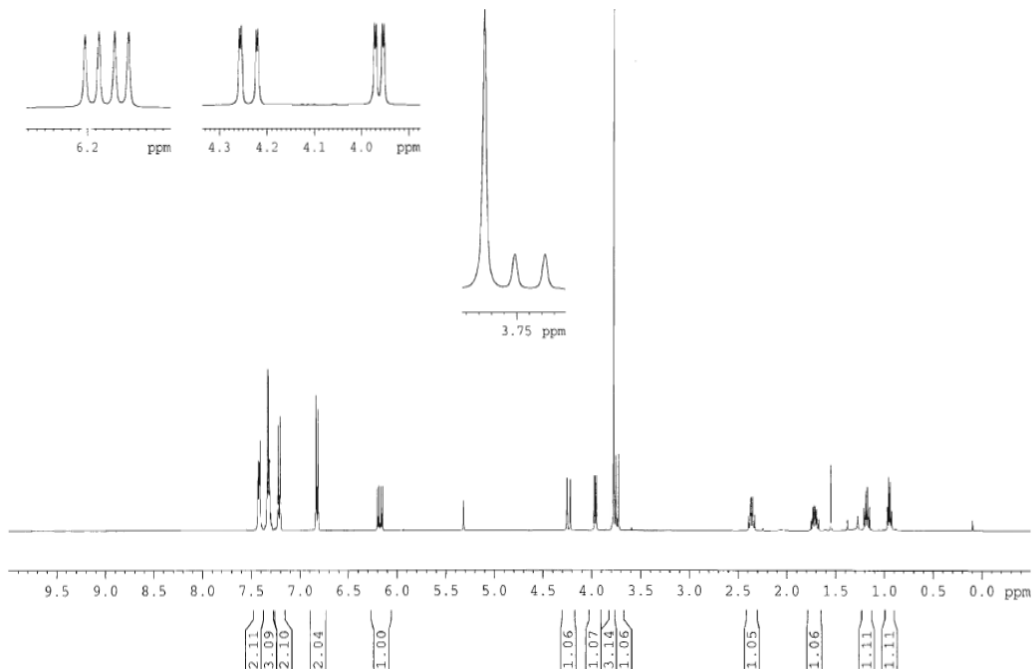
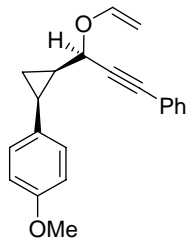


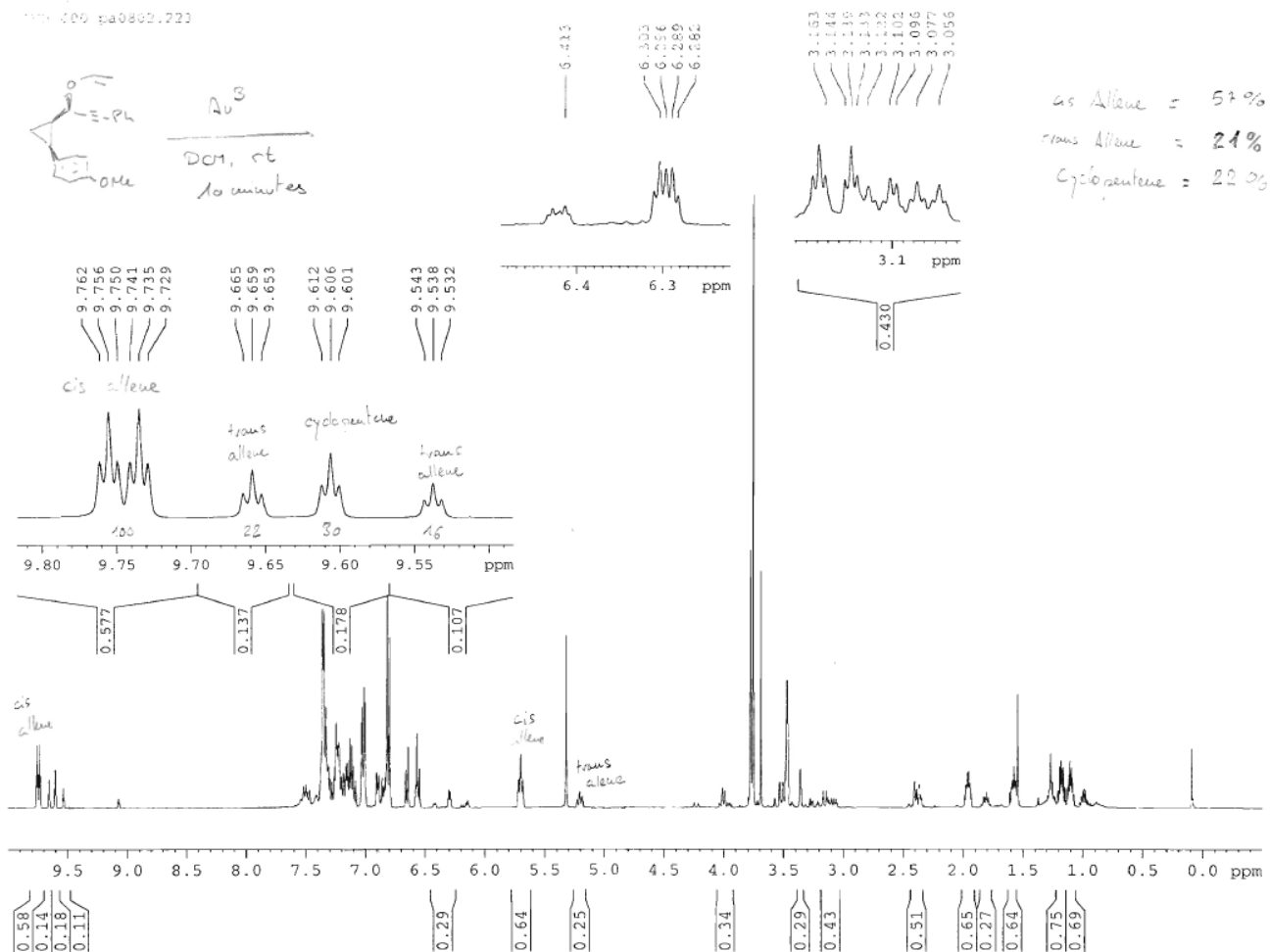
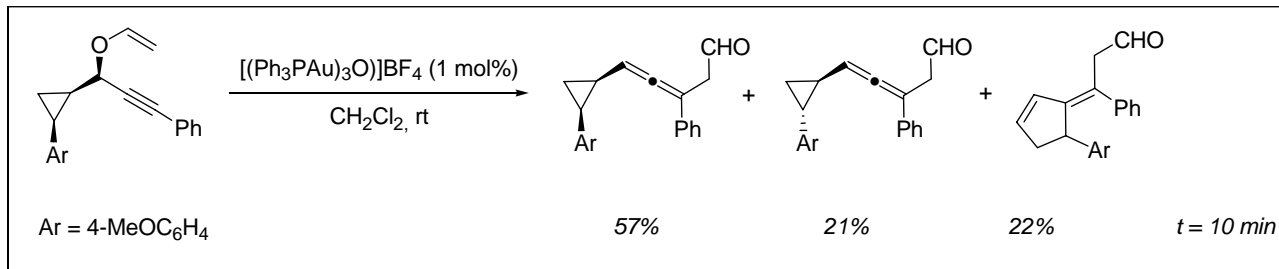


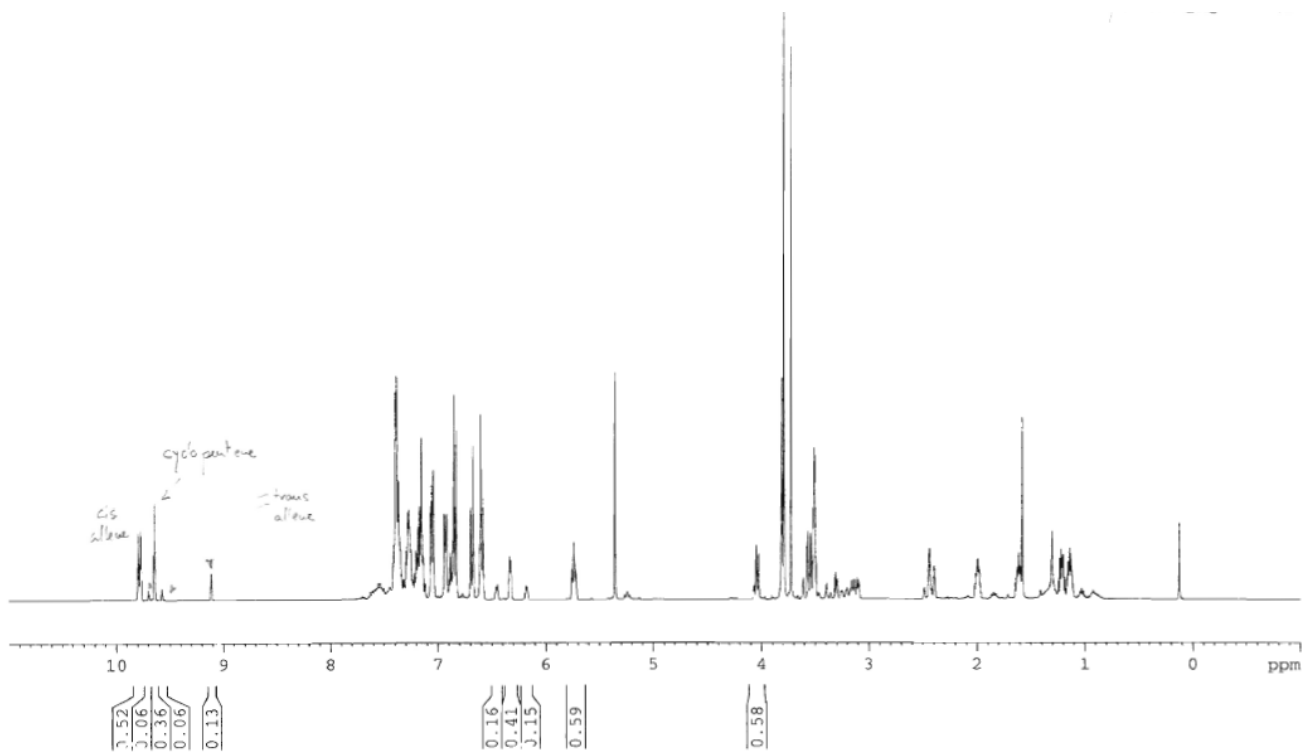
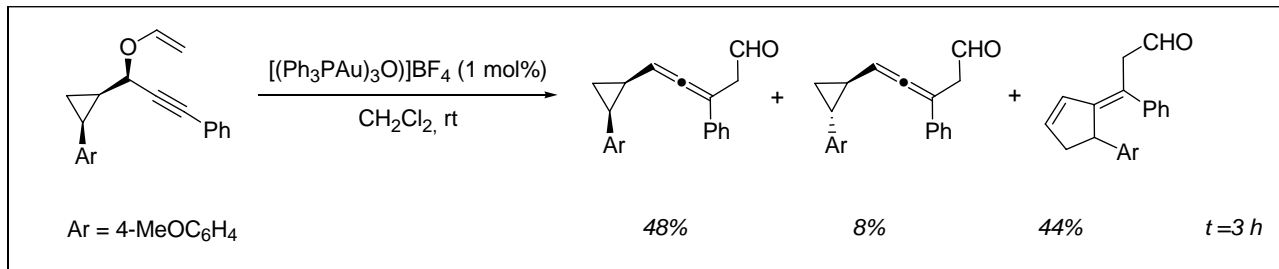


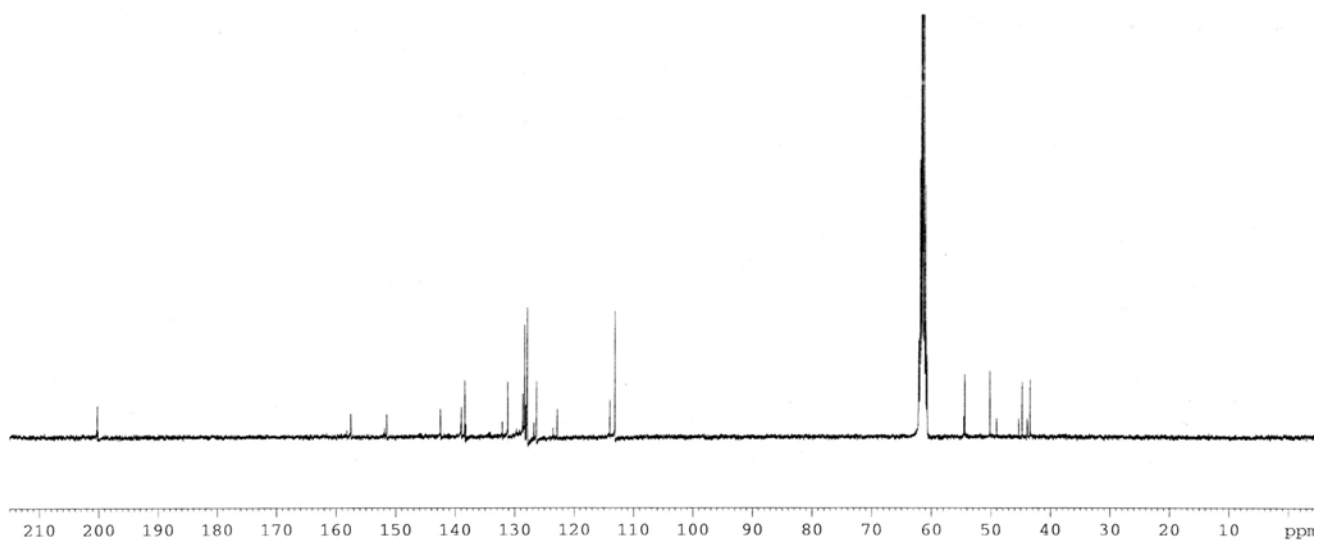
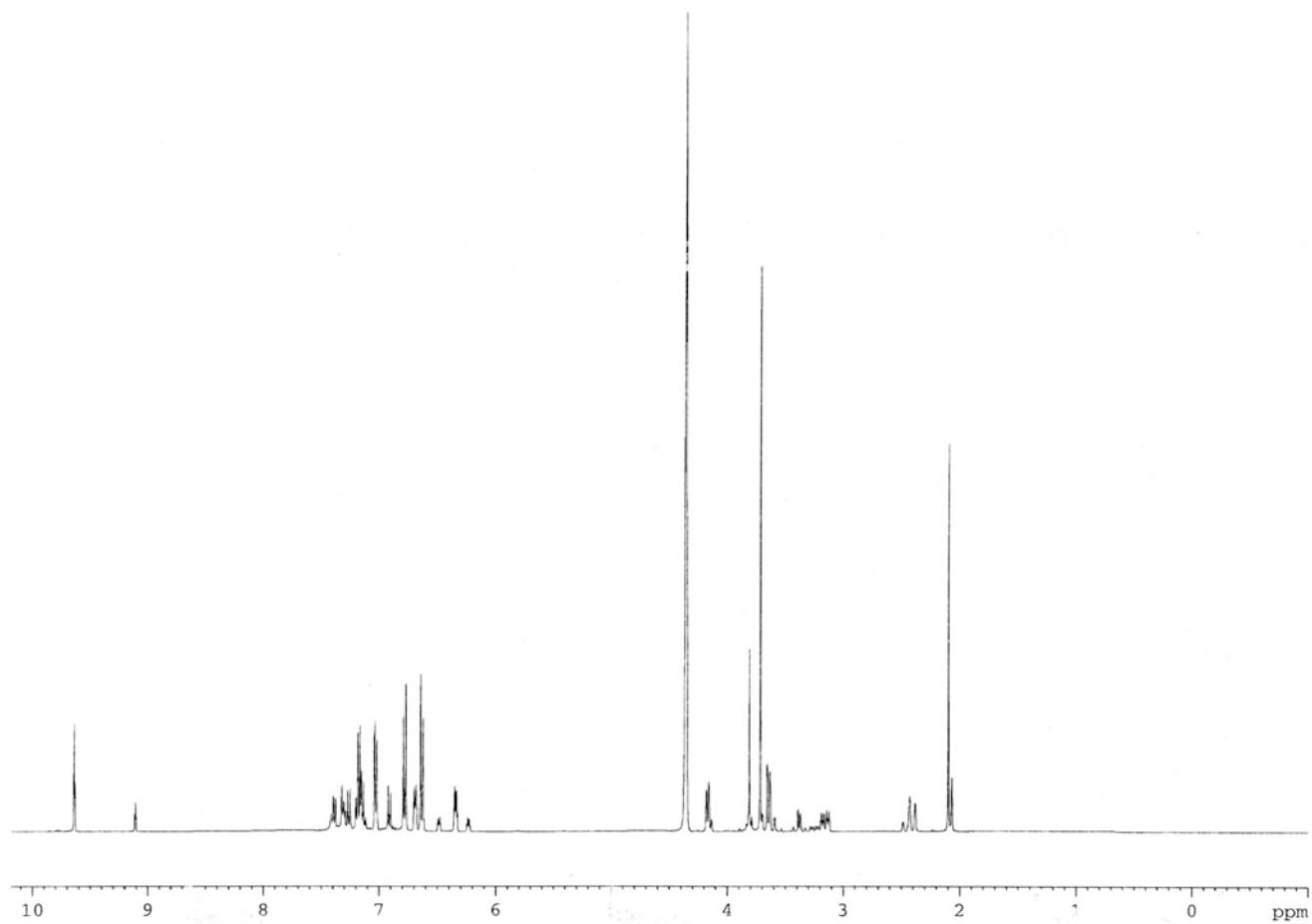
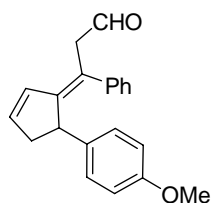


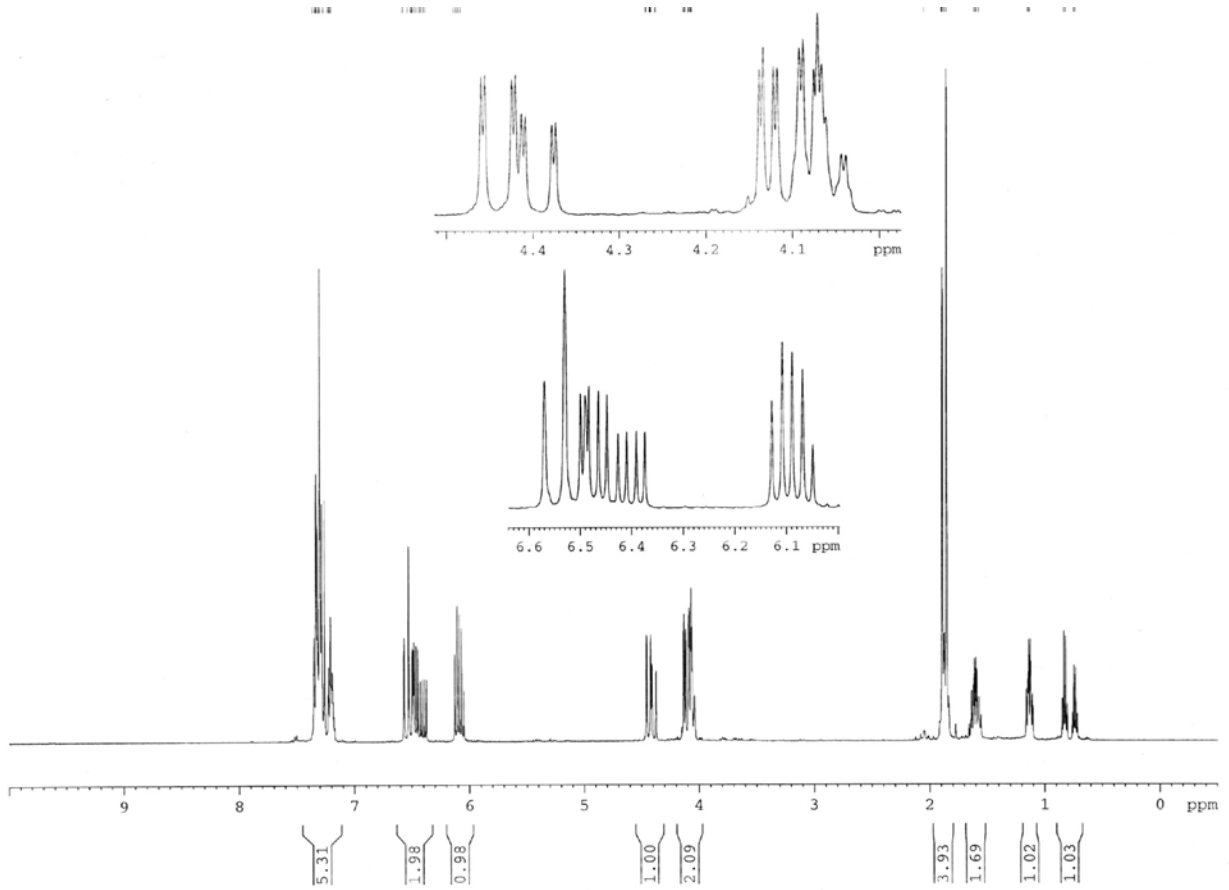
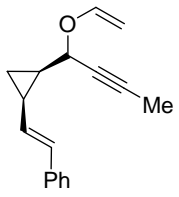


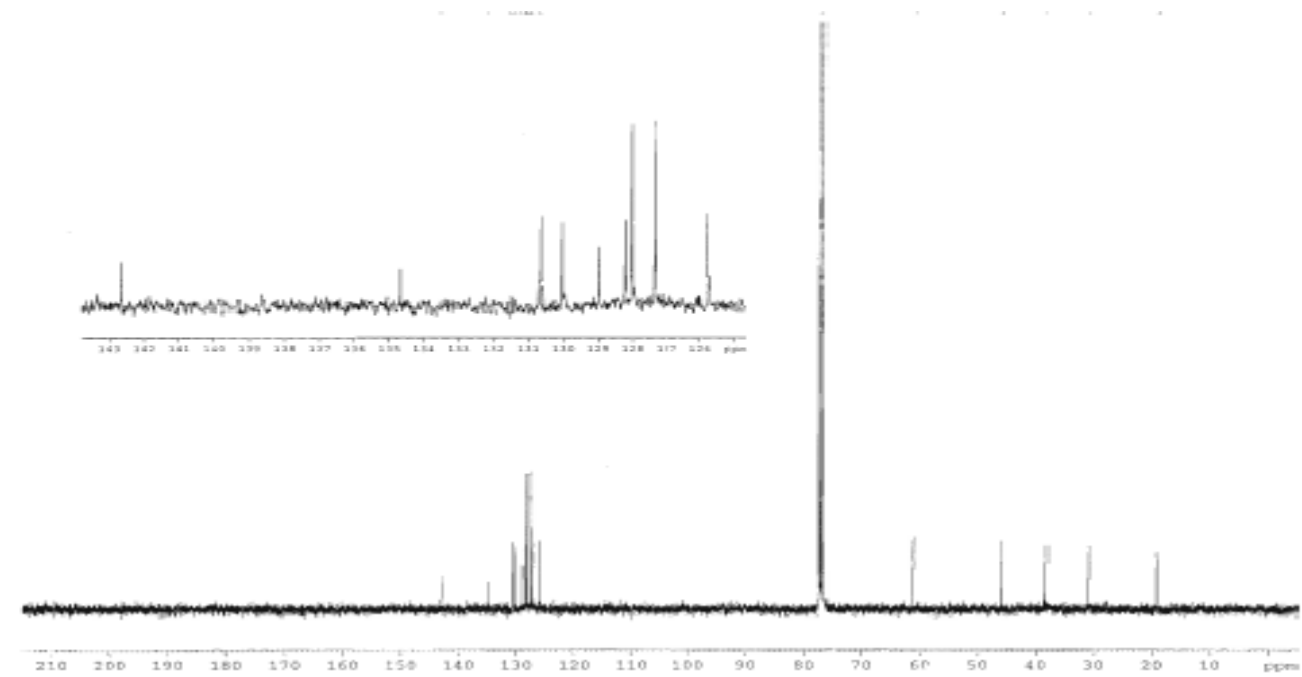
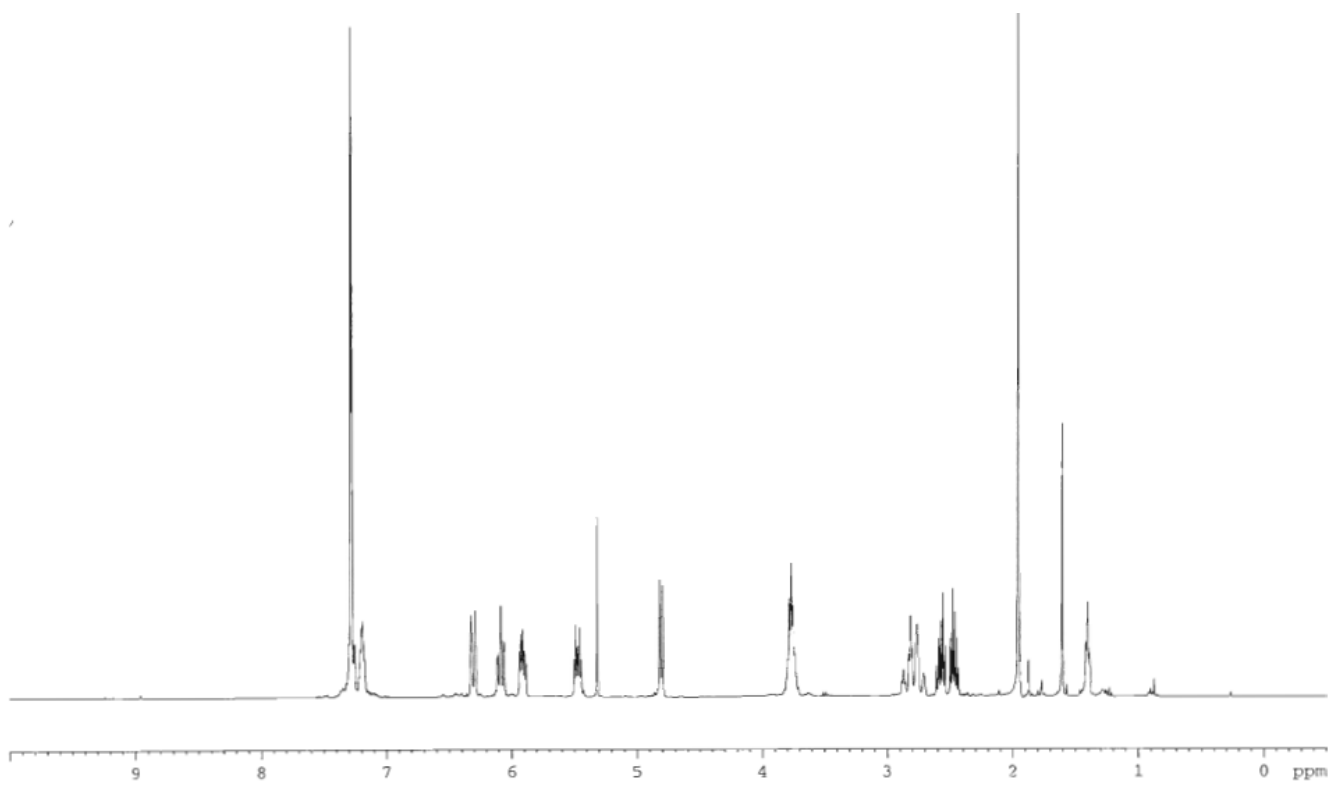
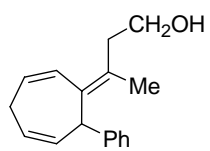


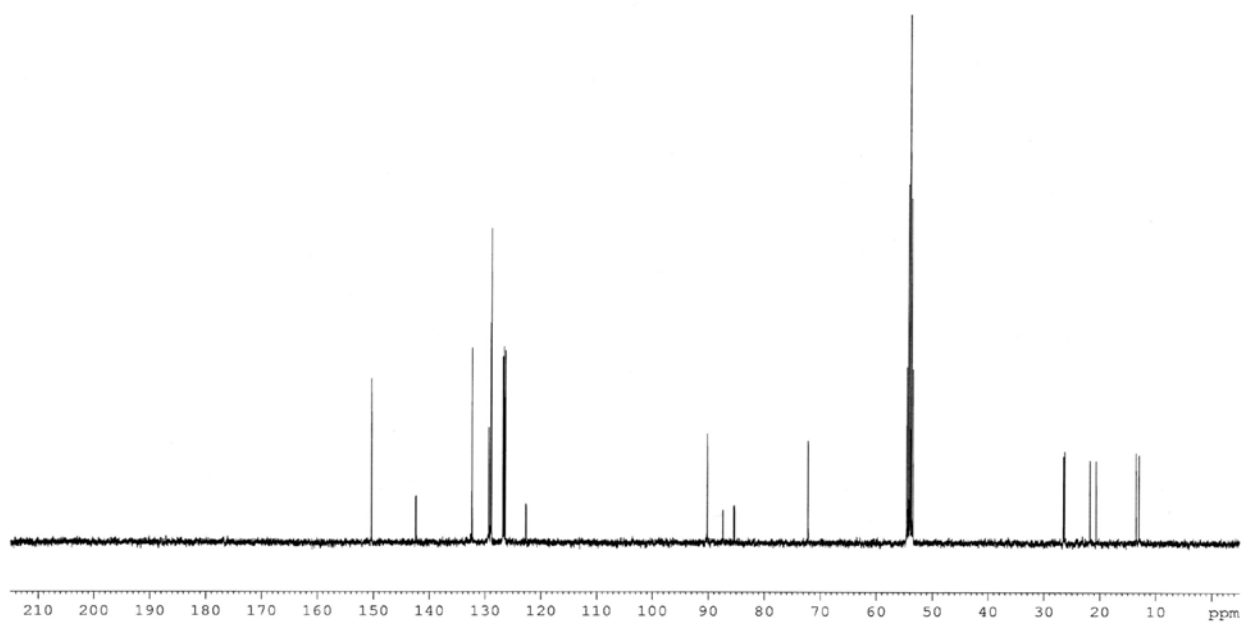
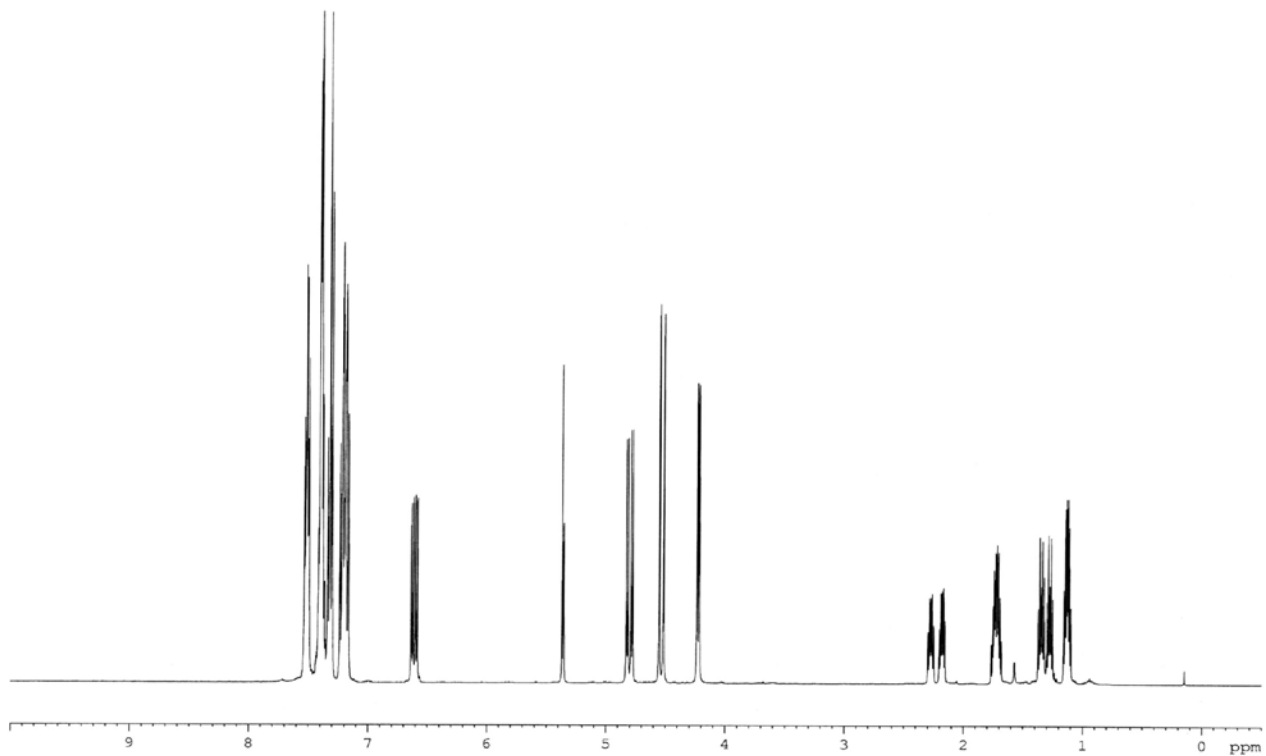
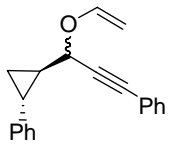


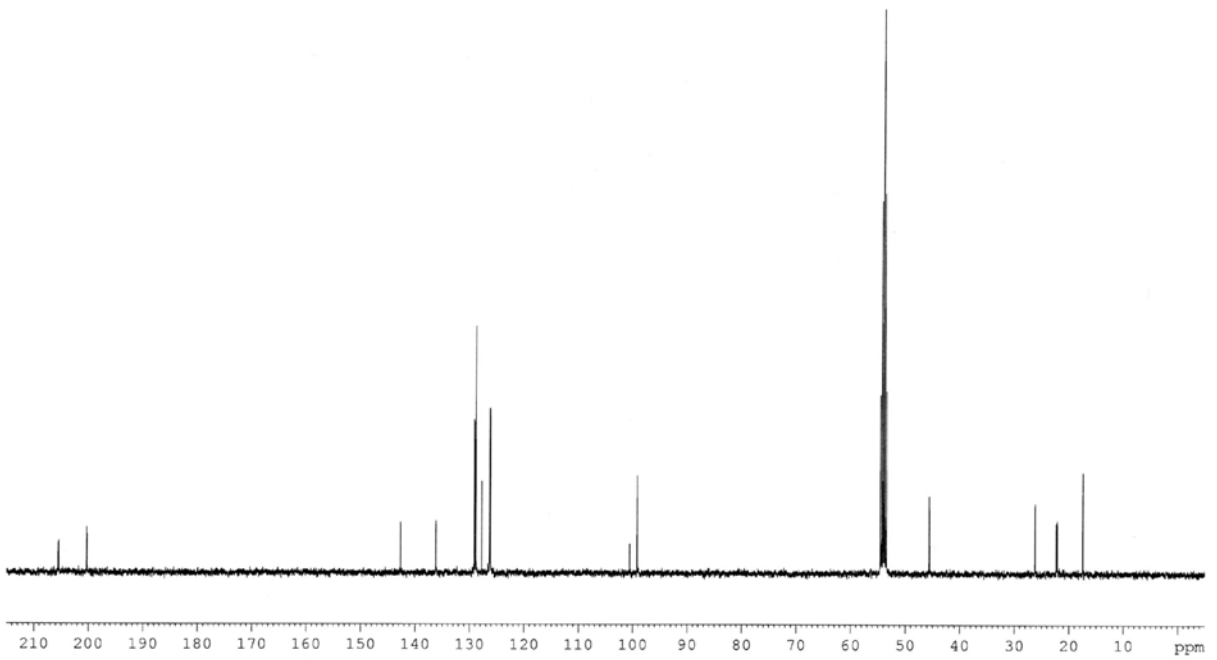
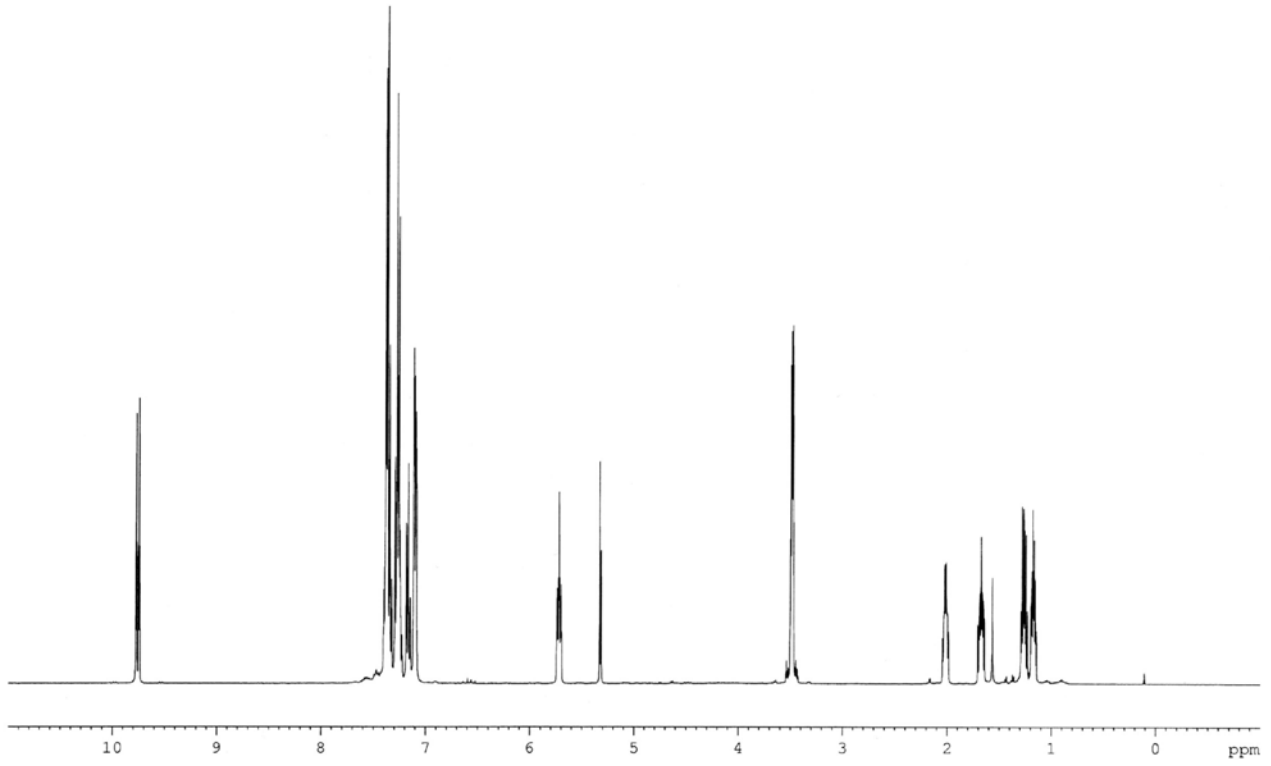
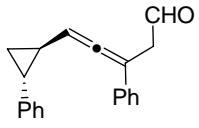


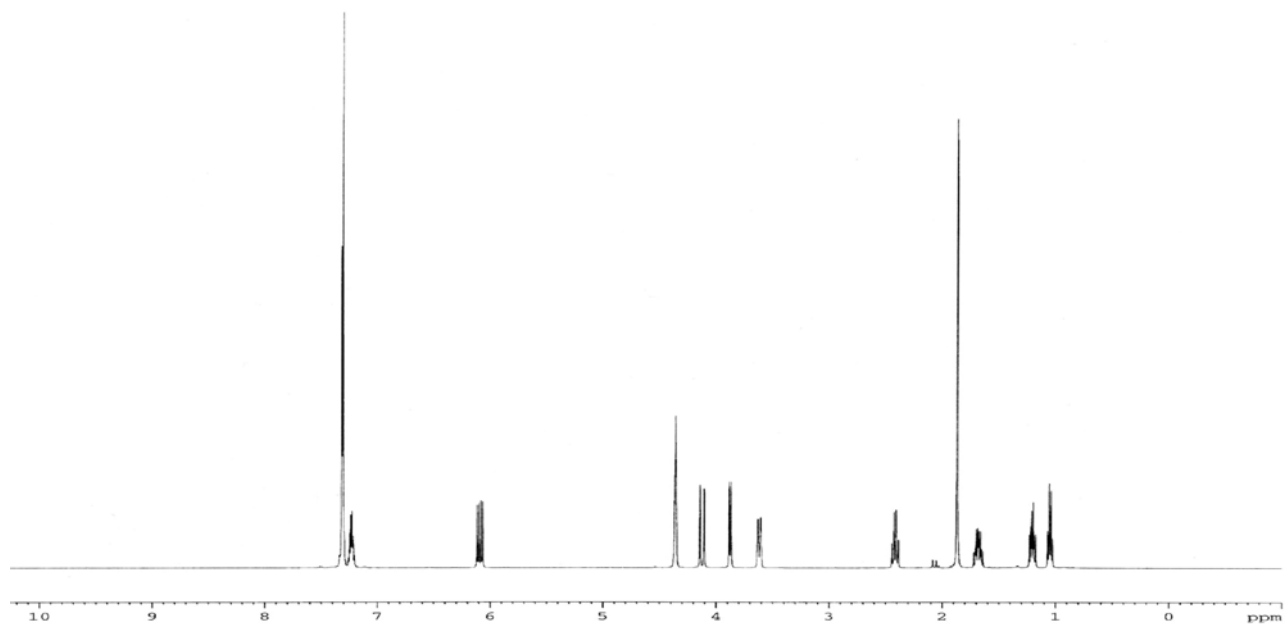
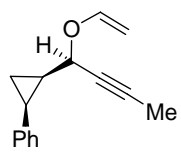


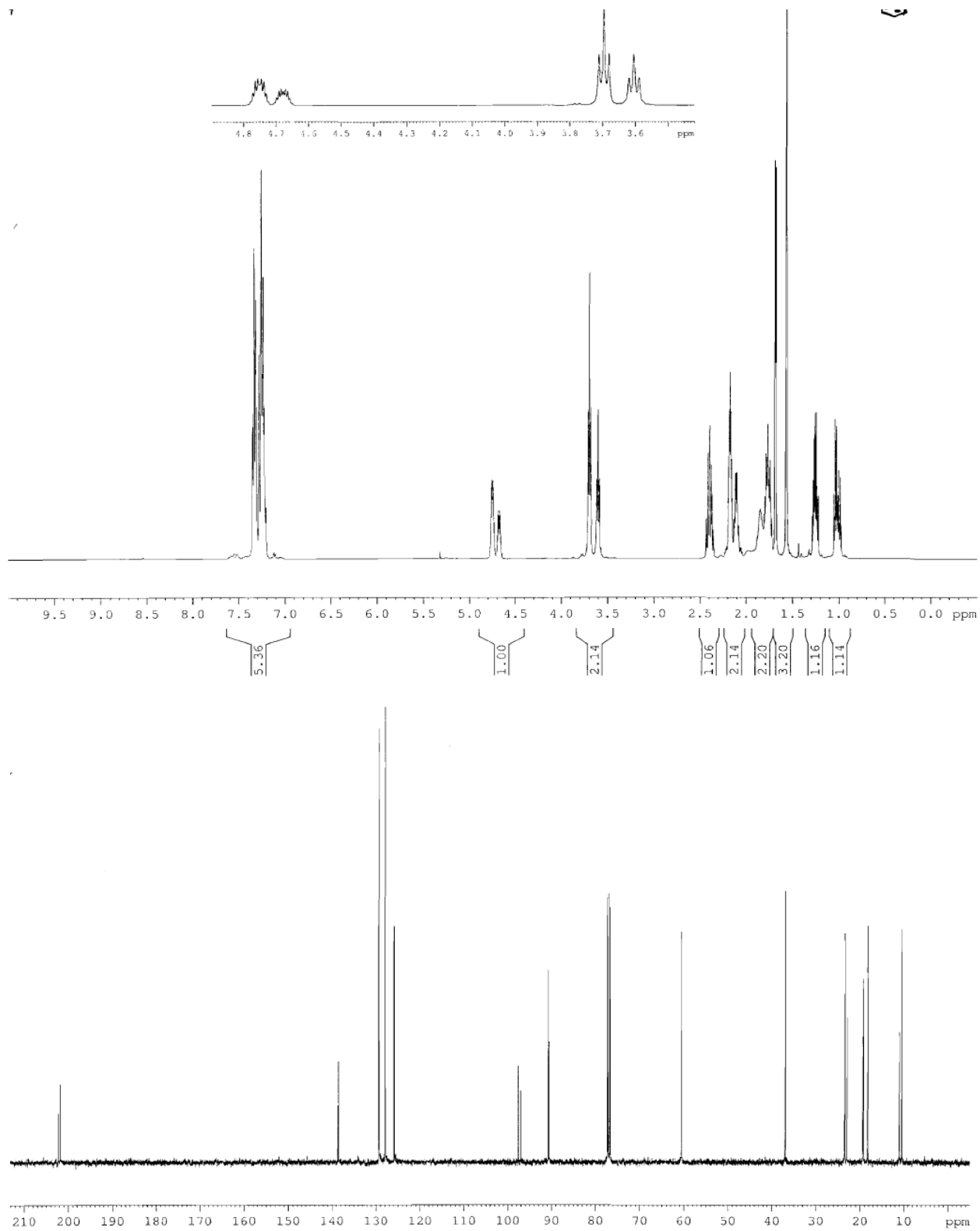
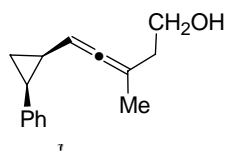


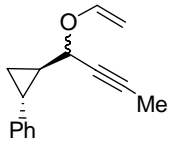




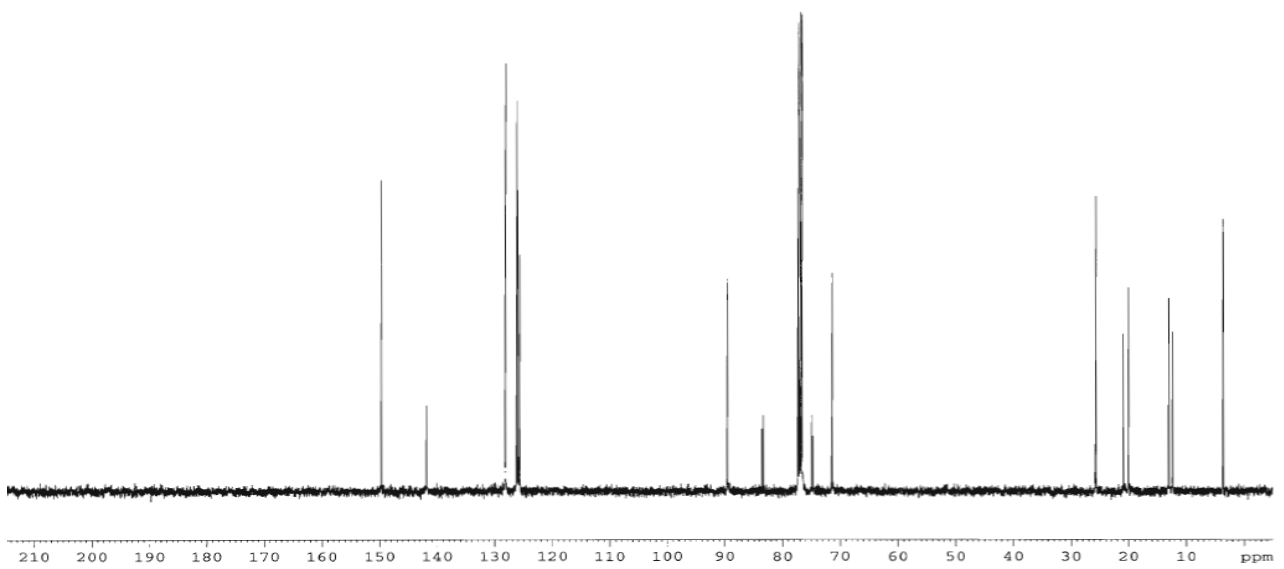
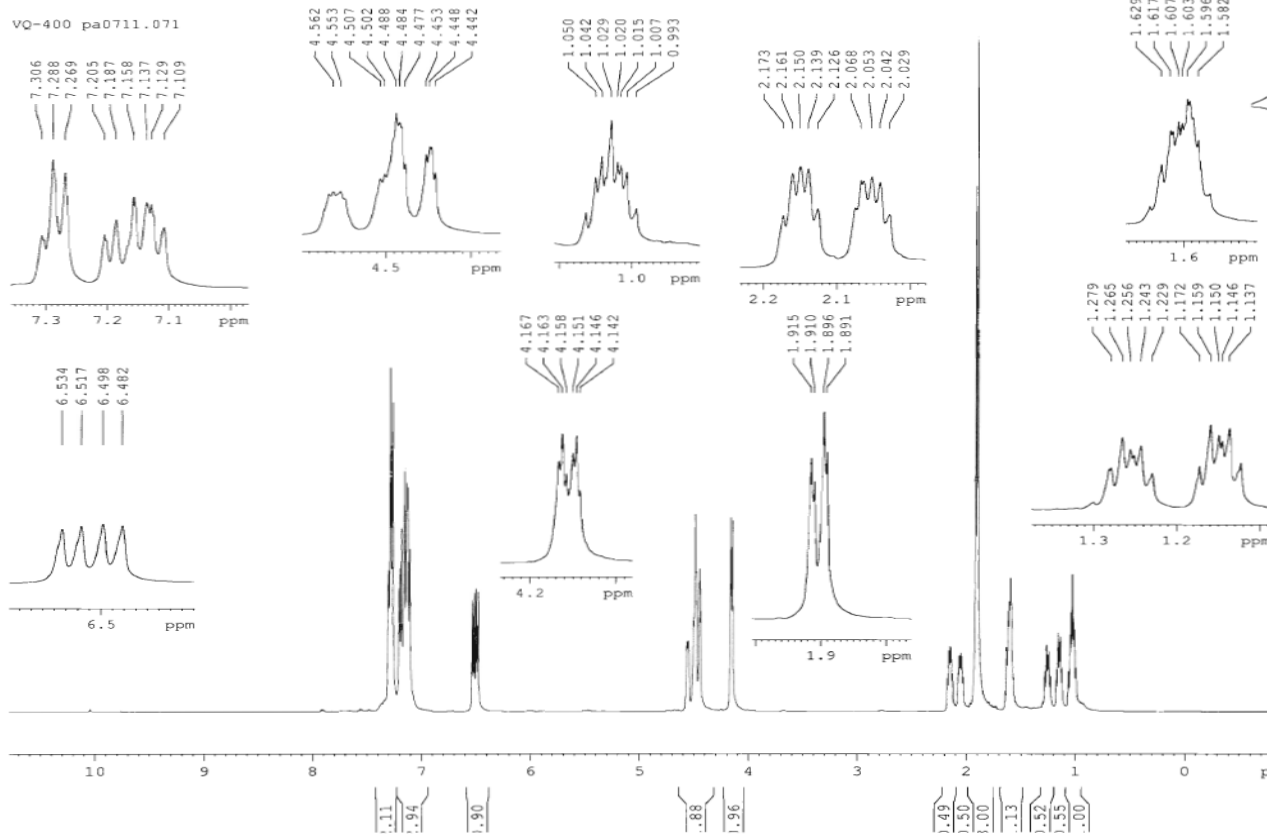


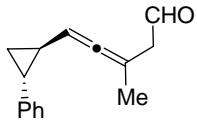




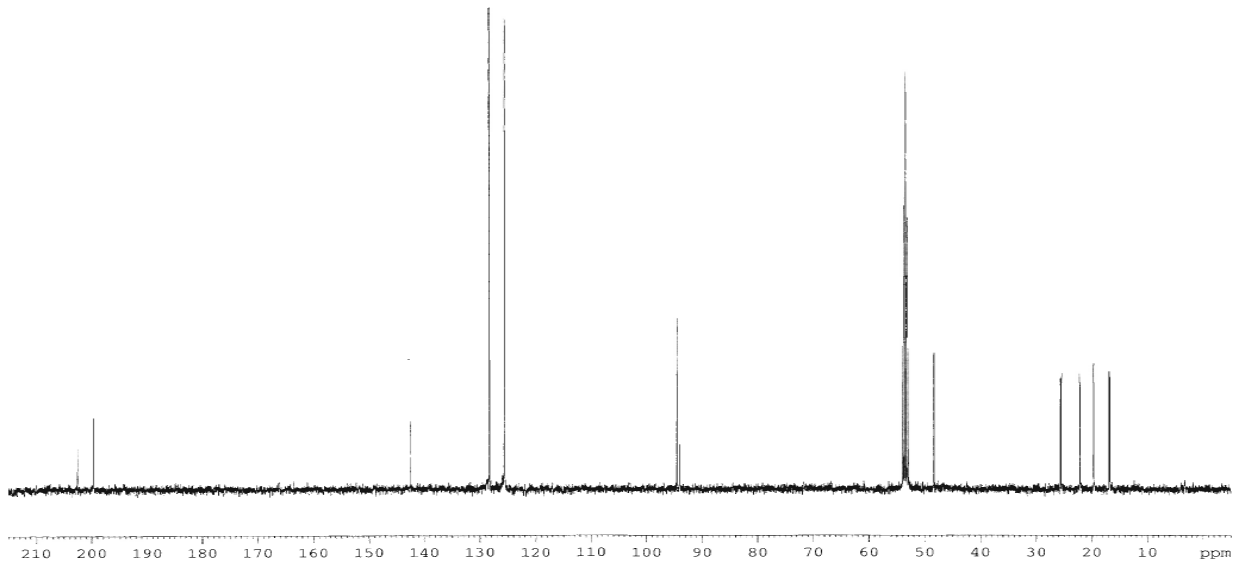
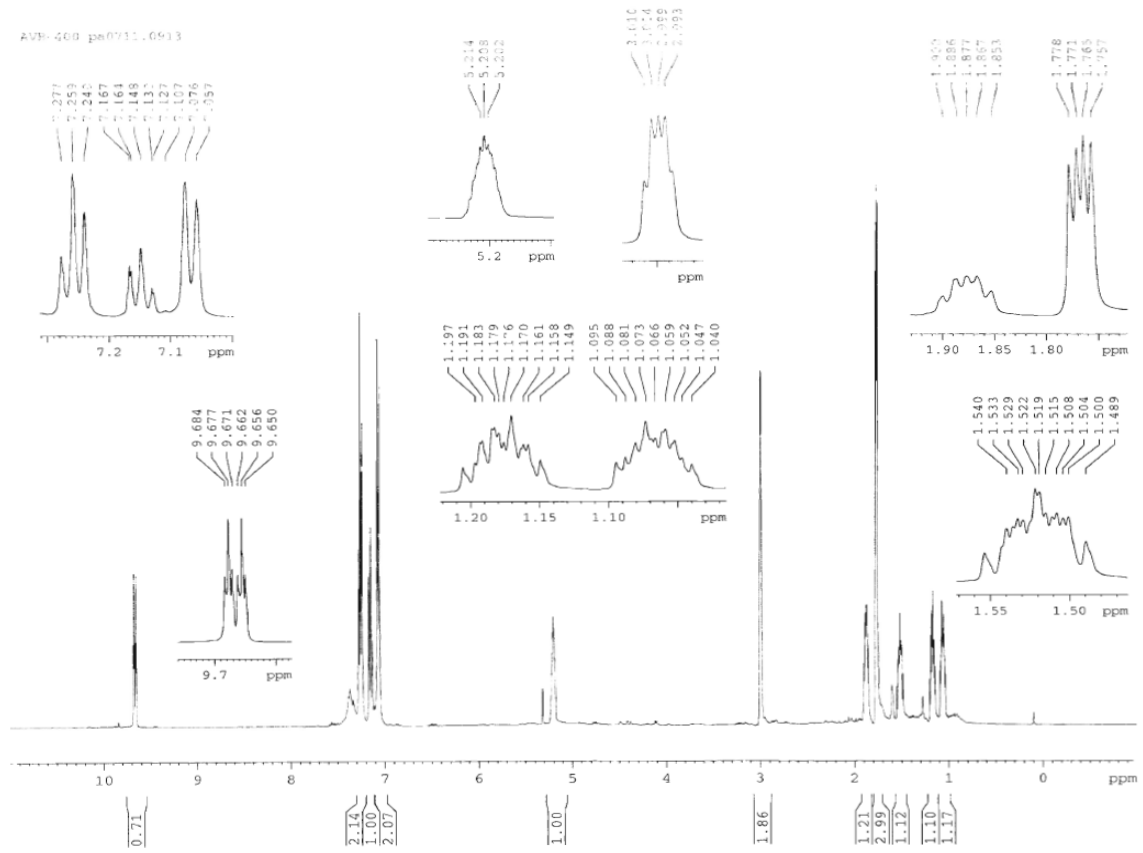


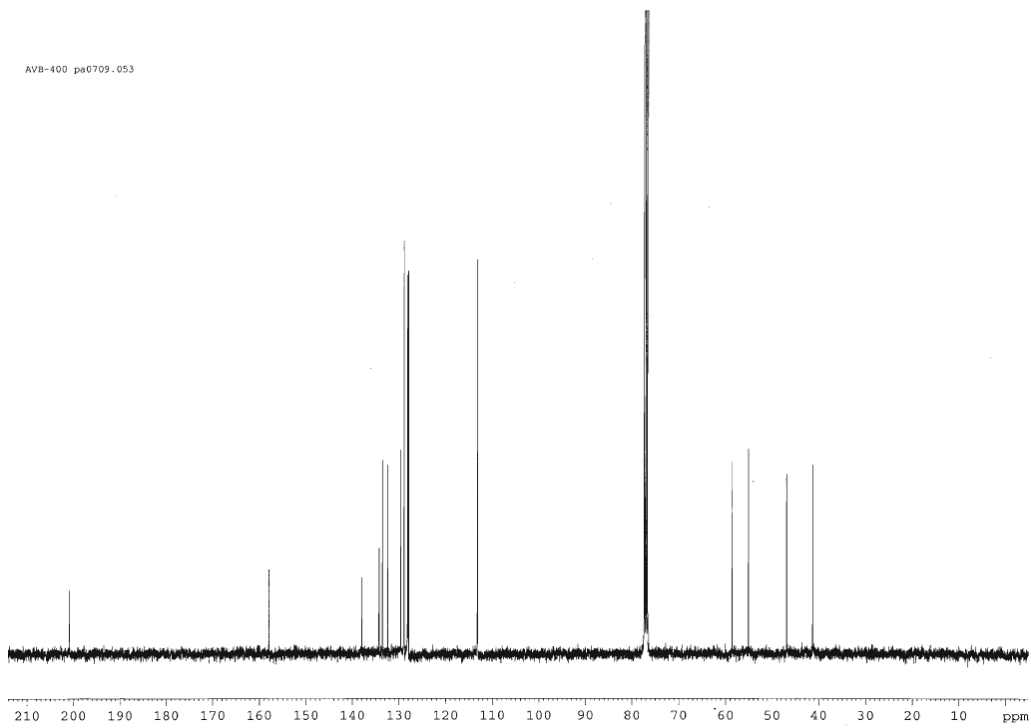
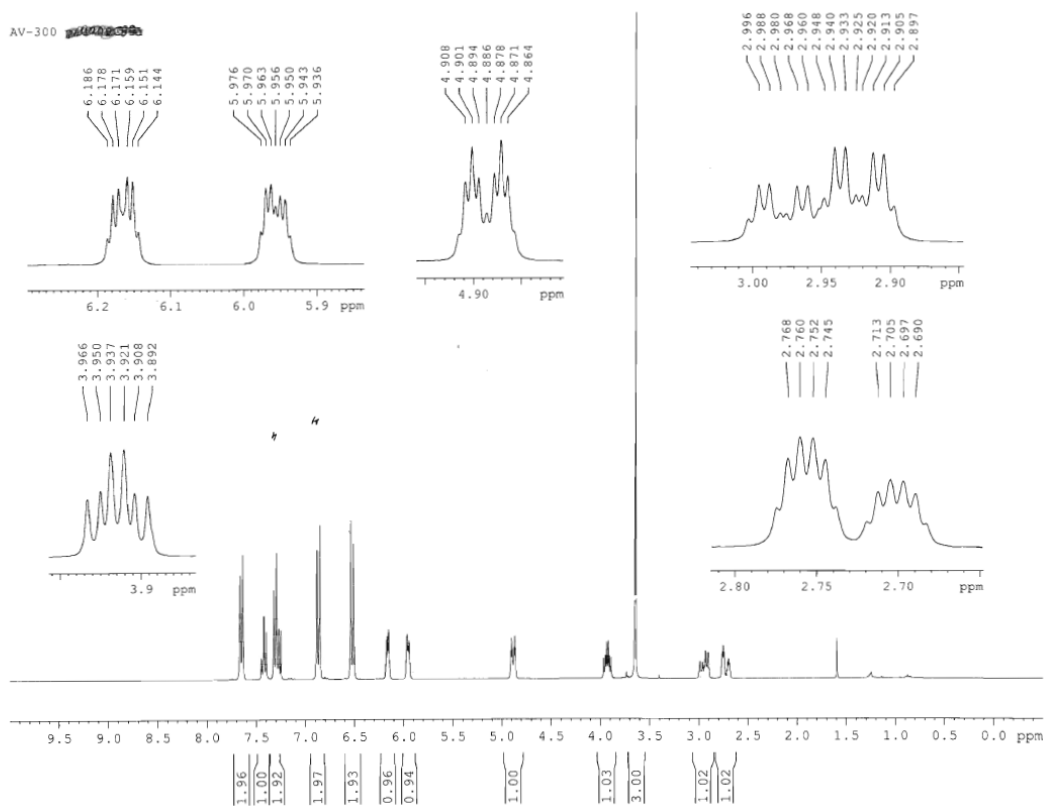
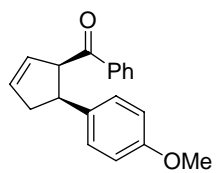
VQ-400 pa0711.071



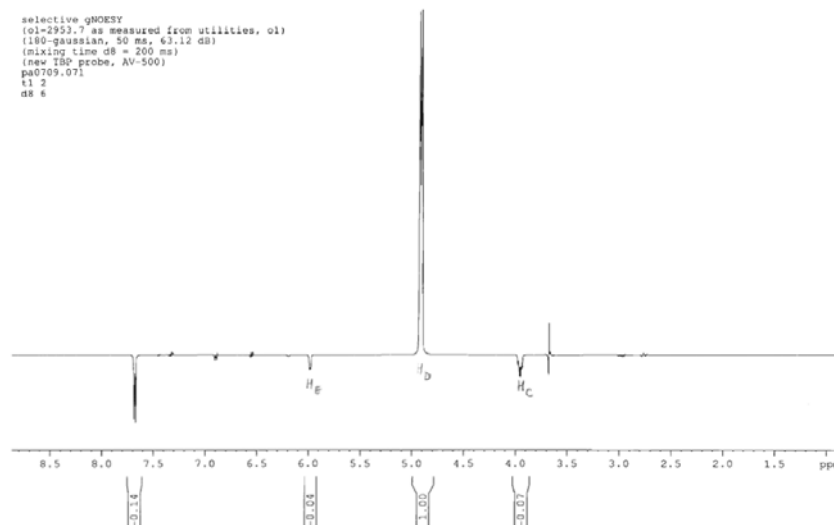
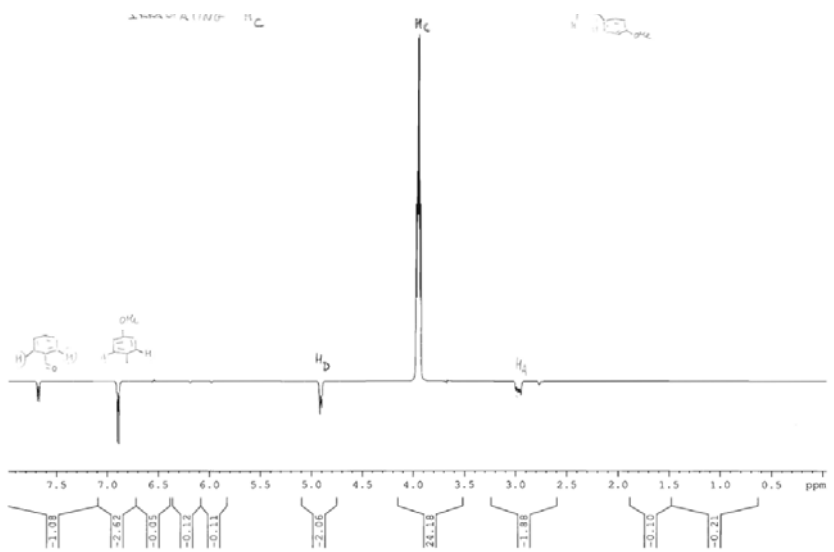
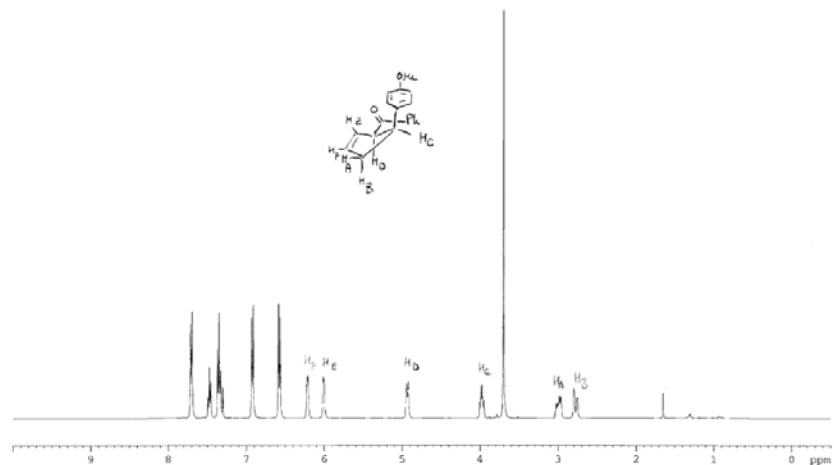
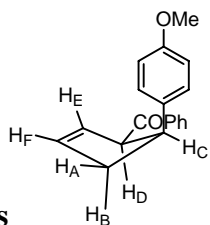


AVH-408 ps0711.0513

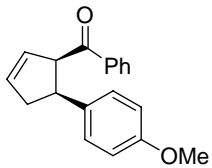




NOESY correlations

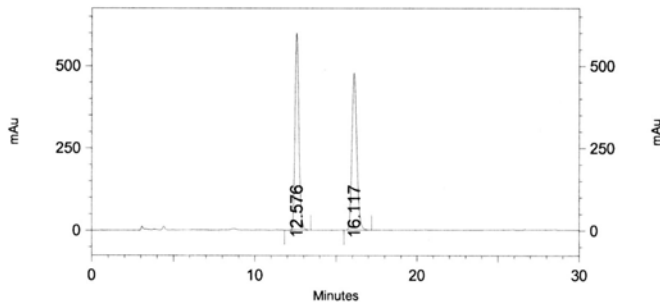


```
selective gNOESY
(ol)=2953.7 as measured from utilities, ol)
(100-gaussian, 50 ms, 63.12 dB)
(mixing time dB = 200 ms)
(new IBO probe, AV-500)
pa0709.071
t1 2
ds 6
```



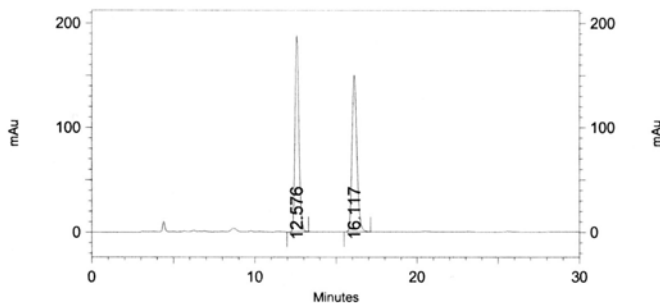
Sample ID: pa0709.081
Filename:
 C:\EZStart\Projects\Default\Data\Pablo\2007\pa0709.081AD9703IP.metBeach9-7-2
 007 8-55-33 PM.dat **Method:**
 C:\EZStart\Projects\Default\Method\AD\AD9703IP.met
Injection volume: 5 uL

Description: {Data Description}



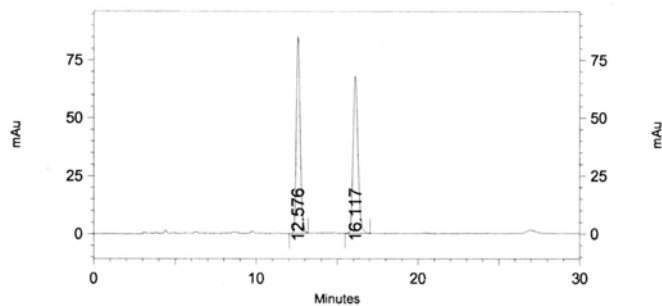
1: 230 nm, 4 nm Results

Retention Time	Area	Area Percent
12.576	9912233	49.915
16.117	9945909	50.085



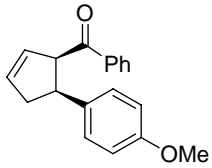
2: 254 nm, 4 nm Results

Retention Time	Area	Area Percent
12.576	3121421	49.990
16.117	3122714	50.010



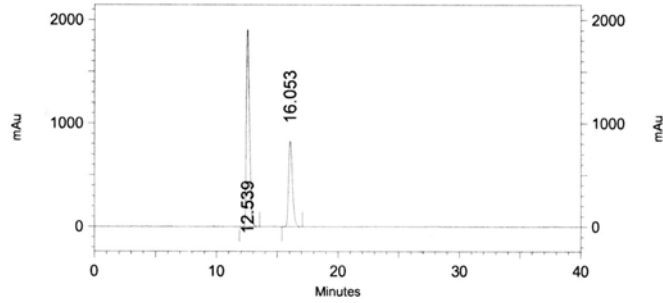
3: 280 nm, 4 nm Results

Retention Time	Area	Area Percent
12.576	1408537	49.978
16.117	1409757	50.022



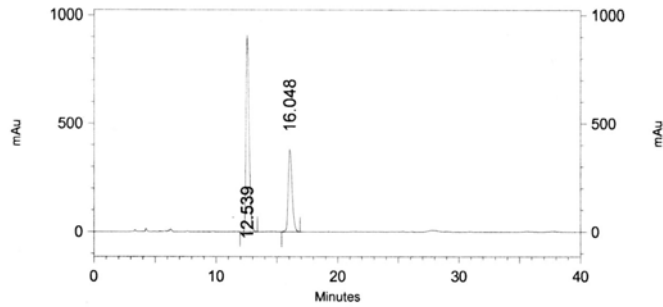
Sample ID: pa0709151
Filename:
 C:\EZStart\Projects\Default\Data\Pablo\2007\pa0709151AD9703IP40min.metBeach9
 -14-2007 11-48-54 PM.dat **Method:**
 C:\EZStart\Projects\Default\Method\Britt\AD9703IP40min.met
Injection volume: 5 uL

Description: {Data Description}



2: 254 nm, 4 nm Results

Retention Time	Area	Area Percent
12.539	35211258	66.063
16.053	18088312	33.937



3: 280 nm, 4 nm Results

Retention Time	Area	Area Percent
12.539	16428854	66.250
16.048	8369252	33.750

