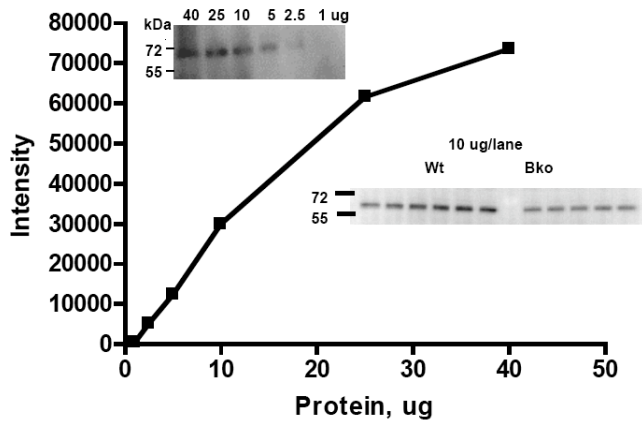
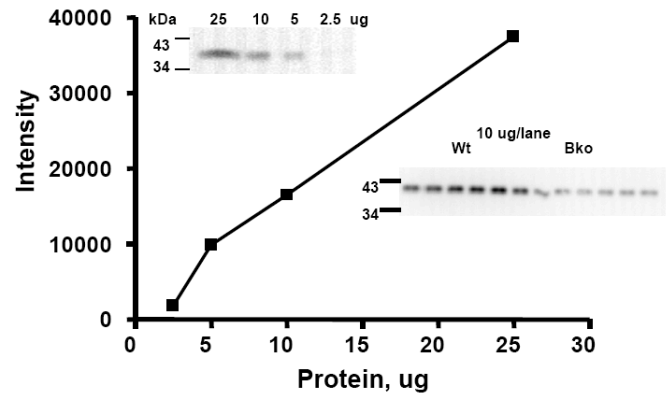


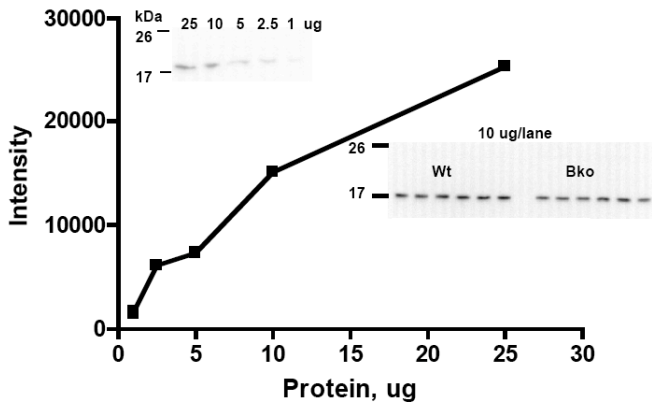
### Anti-Synaptotagmin 1 (p65) mAb



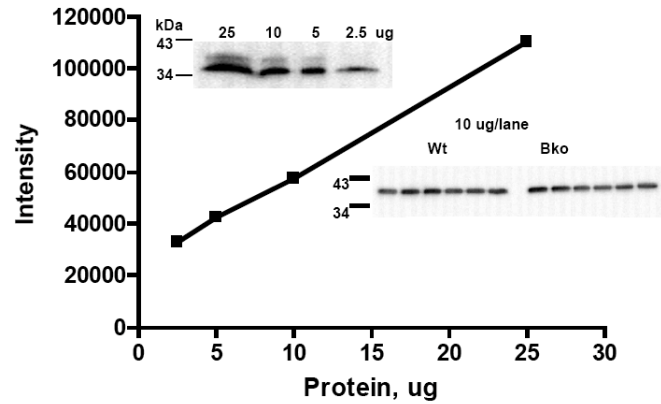
### Anti-Synaptophysin (p38) mAb



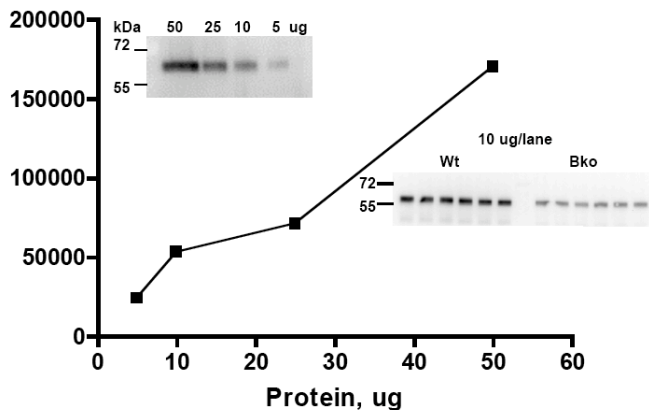
### Anti-Vamp2 mAb



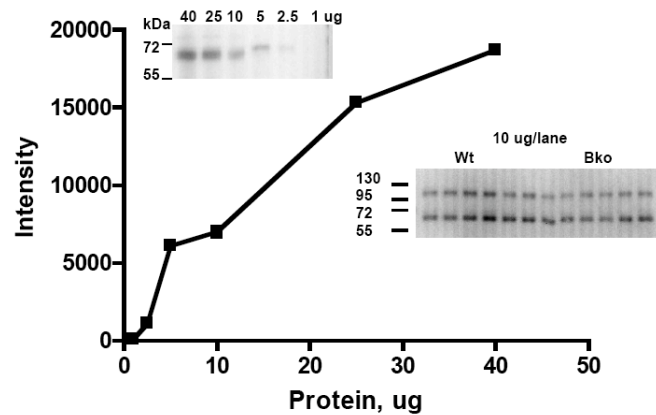
### Anti-GAPDH mAb



### Anti-Synaptotagmin (p65) pAb



### Anti-Vglut1 mAb



### Supplemental Figure 1: Calibration blots and Western data.

Shown are blots and graphs of the signal intensity obtained from increasing amounts of postnuclear supernatant from wild-type eye probed with the indicated antibody. Also shown are representative quantitative blots showing wild-type and SV2B KO sample replicates.