

Figure S1

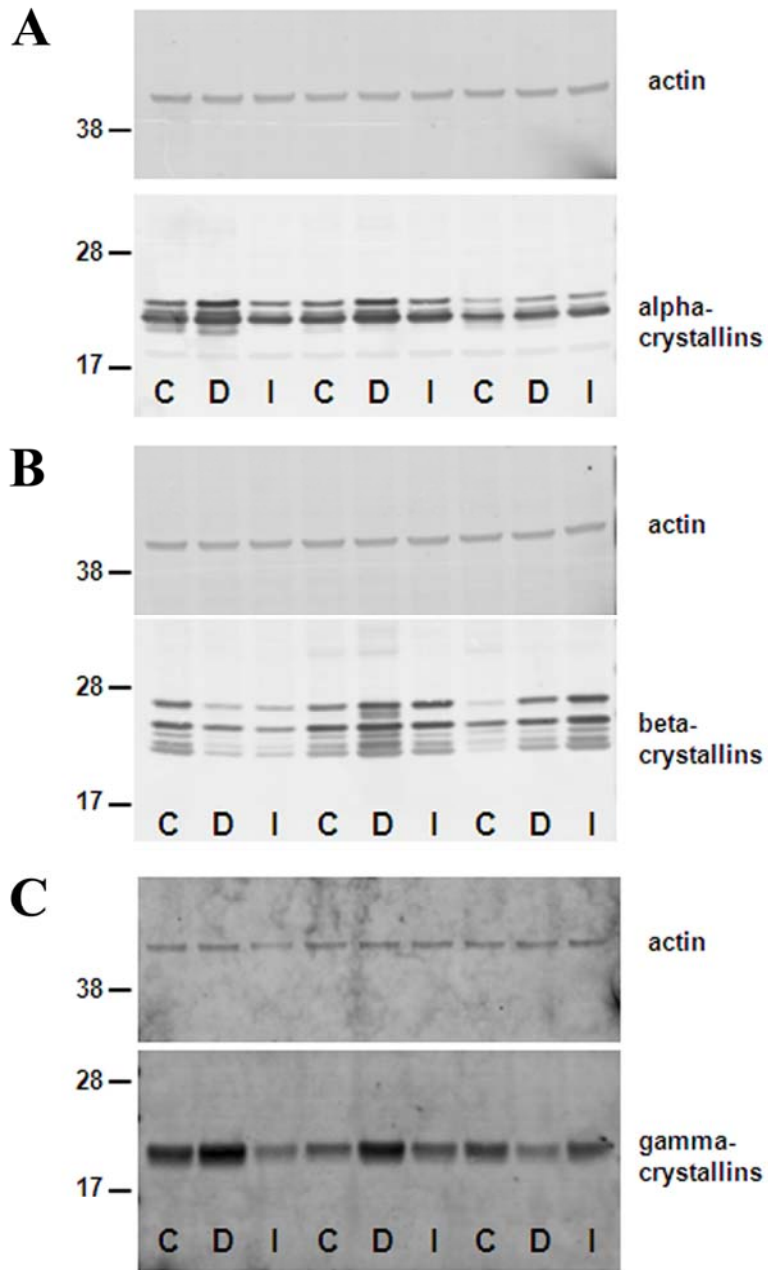


Figure S1: Western-blot confirmation of 2D proteomic. Representative immunoblot of alpha-crystallins (A), beta-crystallins (B) and gamma-crystallins (C) on retinal protein samples from control, diabetic and systemic insulin treated diabetic rats. The actin blot corresponding to each membrane and that was used to normalize is also presented. (C: control, D: diabetic, I: diabetic with systemic insulin)