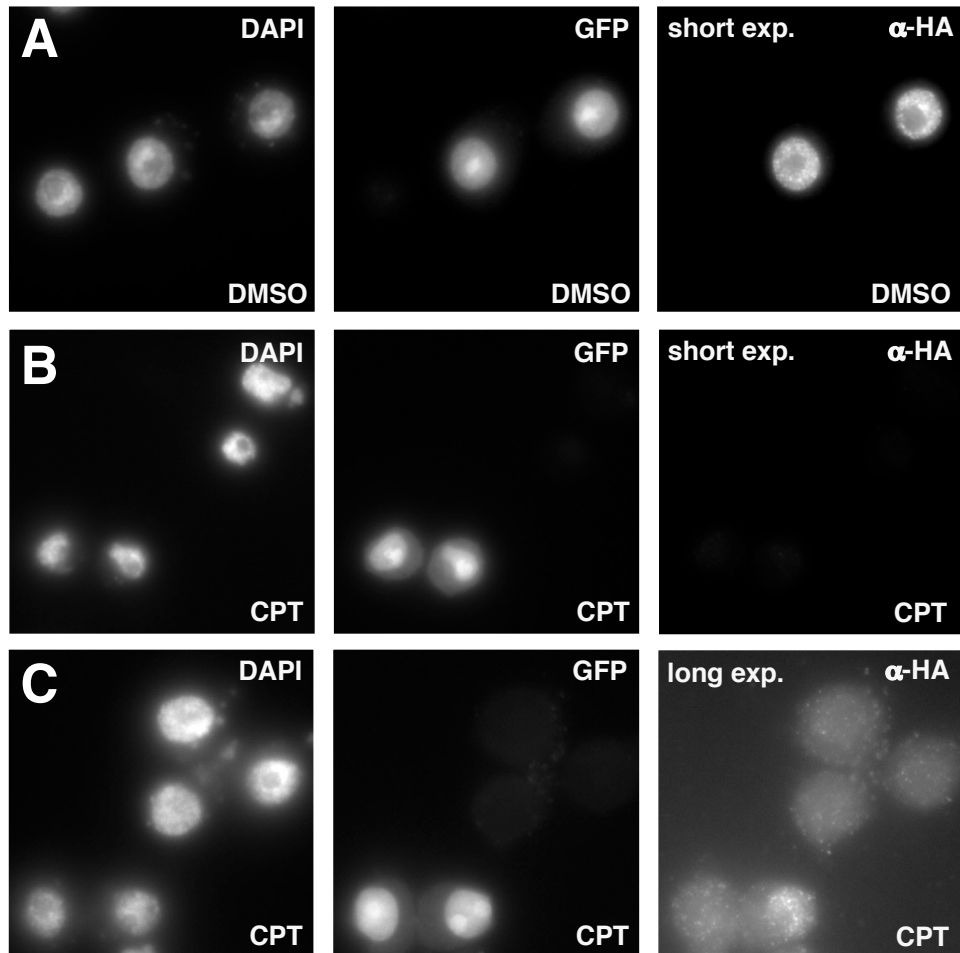
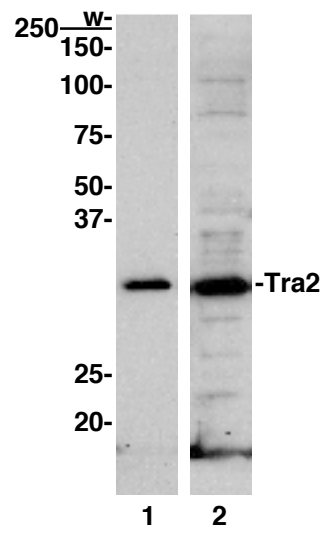


Supplemental Fig. 1. HA-Tra2 localization in S2 cells. (A) Images of DMSO-treated S2 cells transfected with plasmids expressing HA-Tra2 and GFP. DAPI staining of DNA identified cell nuclei, GFP fluorescence identified transfected cells, and α -HA antibody staining identified HA-Tra2. (B and C) Images of CPT-treated S2 cells transfected with plasmids expressing HA-Tra2 and GFP. The images are analogous to those described for panel A, except that the exposure time was increased for the α -HA image in panel C.

Supplemental Fig. 2. The Pan-Tra2 antibody predominantly recognizes endogenous Tra2 in a Western blot of *Drosophila* S2 whole cell extract. Lane 2 is a longer exposure of the blot shown in lane 1. The position of Tra2 is indicated on the right, positions of protein molecular mass markers (in kDa) and the well (w) are indicated on the left.



Supplemental Figure 1



Supplemental Figure 2