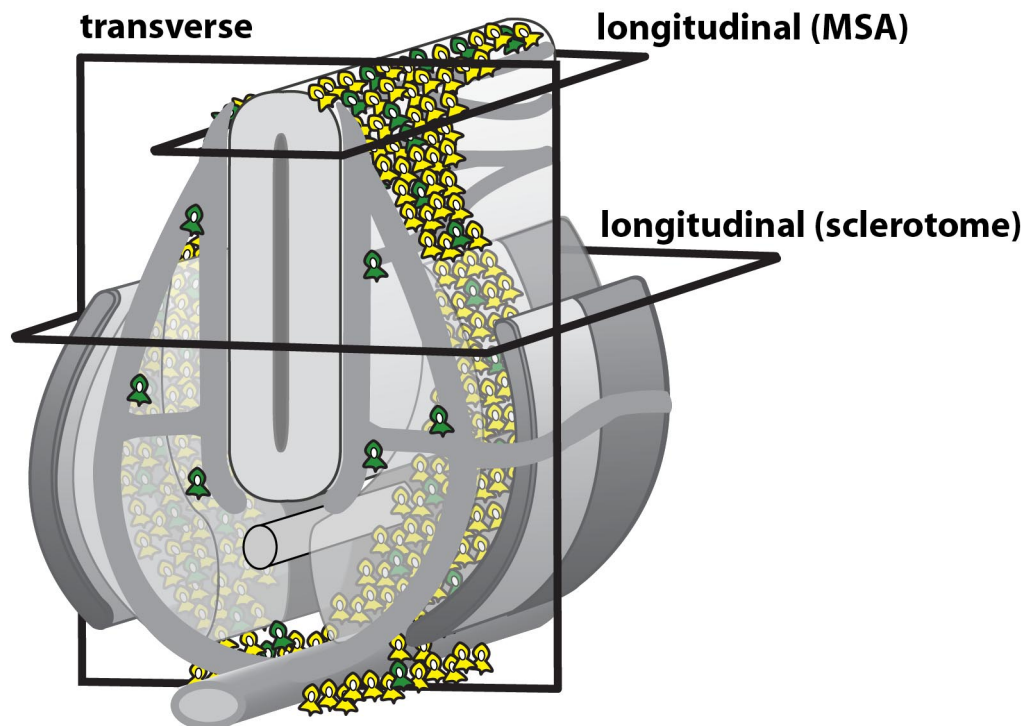


# Supporting Information

Schwarz et al. 10.1073/pnas.0811521106



**Fig. S1.** Schematic representation of the planes of sectioning used in this study. Transverse sections are shown in Figs. 2–6. Longitudinal sections are shown in Figs. 1 and 4; the longitudinal sections shown contained the sclerotome, with the exception of Fig. 1*B*, which shows a section through the migration staging area (MSA).