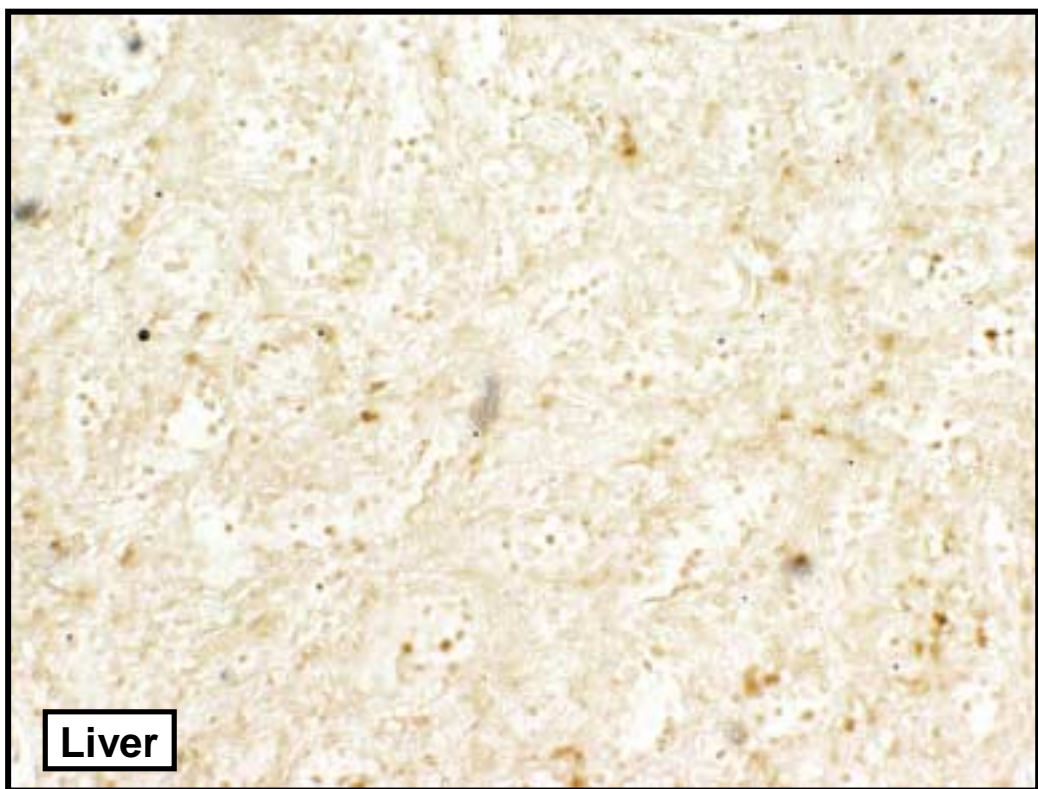
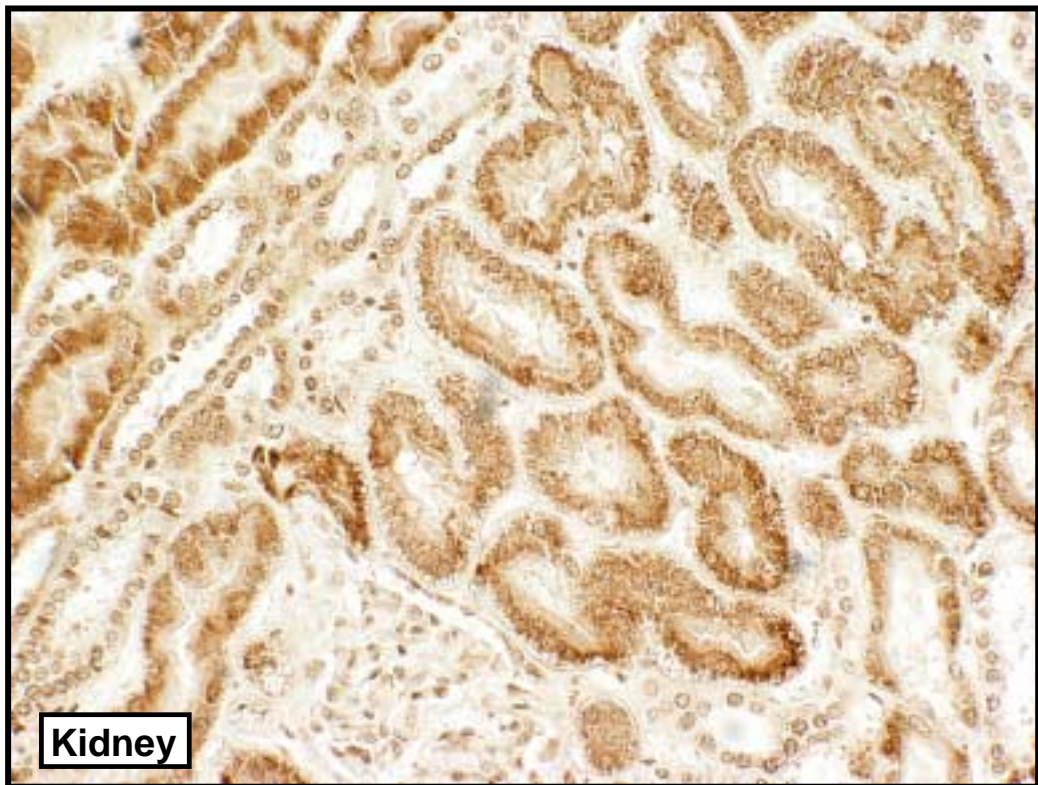


Supplementary Data - Figure 1



## **CAN-07-1315 Version 3**

Corresponding author: Alessandro Fatatis

afatatis@drexelmed.edu

### **Supplementary data 1**

Epithelial prostate cancer cells stain positive for CX3CR1 (**top**); the specificity of the primary antibody was validated using tissue cores of normal human heart tissue (**center**), which does not express CX3CR1 and lung tissue (**bottom**), which express the chemokine receptor.

### **Supplementary data 2**

The specificity of the primary antibody against human fractalkine was validated using tissue cores from kidney (**top**), which expresses fractalkine and liver (**bottom**), which does not express the chemokine.