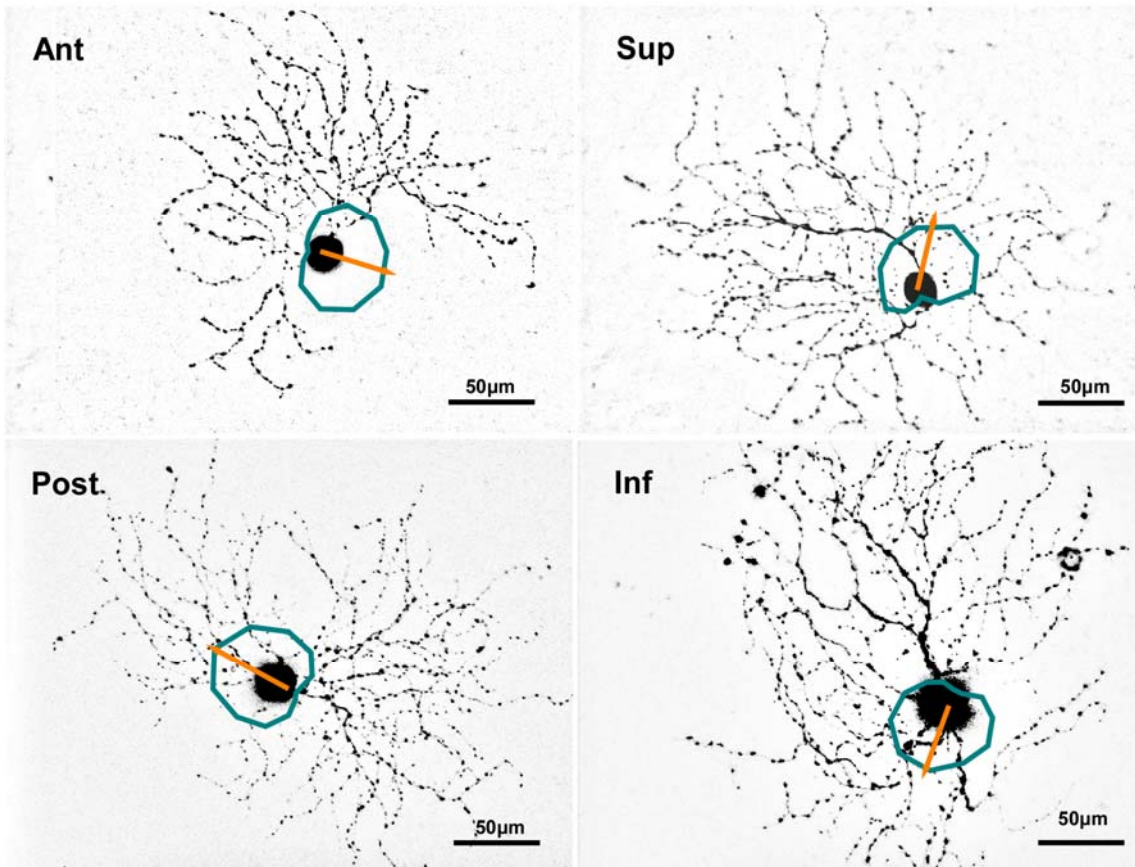


Suppl. Fig. 1. DSGCs respond to four cardinal directions. Polar plots of responses to bars drifting in 12 directions are superimposed on the dendritic morphology. Small arrows indicate the vector sum of the polar plot.

Suppl. Fig. 2. Effective dark-rearing. The percentage of the ON-OFF retinal ganglion cells was significantly increased in retinas dark reared to P30 when compared with age matched control retinas, consistent with previous reports. Numbers in brackets indicate number of ON-OFF cells versus all recorded cells ($p < 0.05$, average \pm SEM).

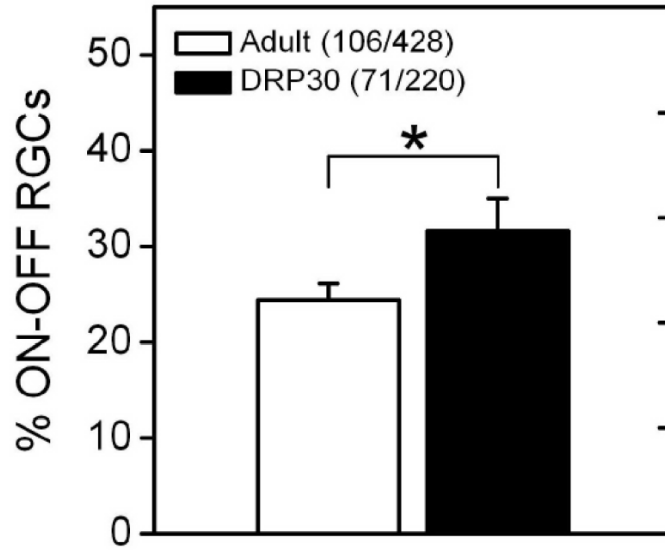
Suppl. Fig. 3. The ON-OFF DSGCs show characteristic morphological features as identified in mouse retina (Weng *et al.*, 2005) in both adult and dark-reared animals.

Suppl Figure 1



Development of direction selective circuitry in the retina

Suppl Figure 2



Suppl Figure 3

