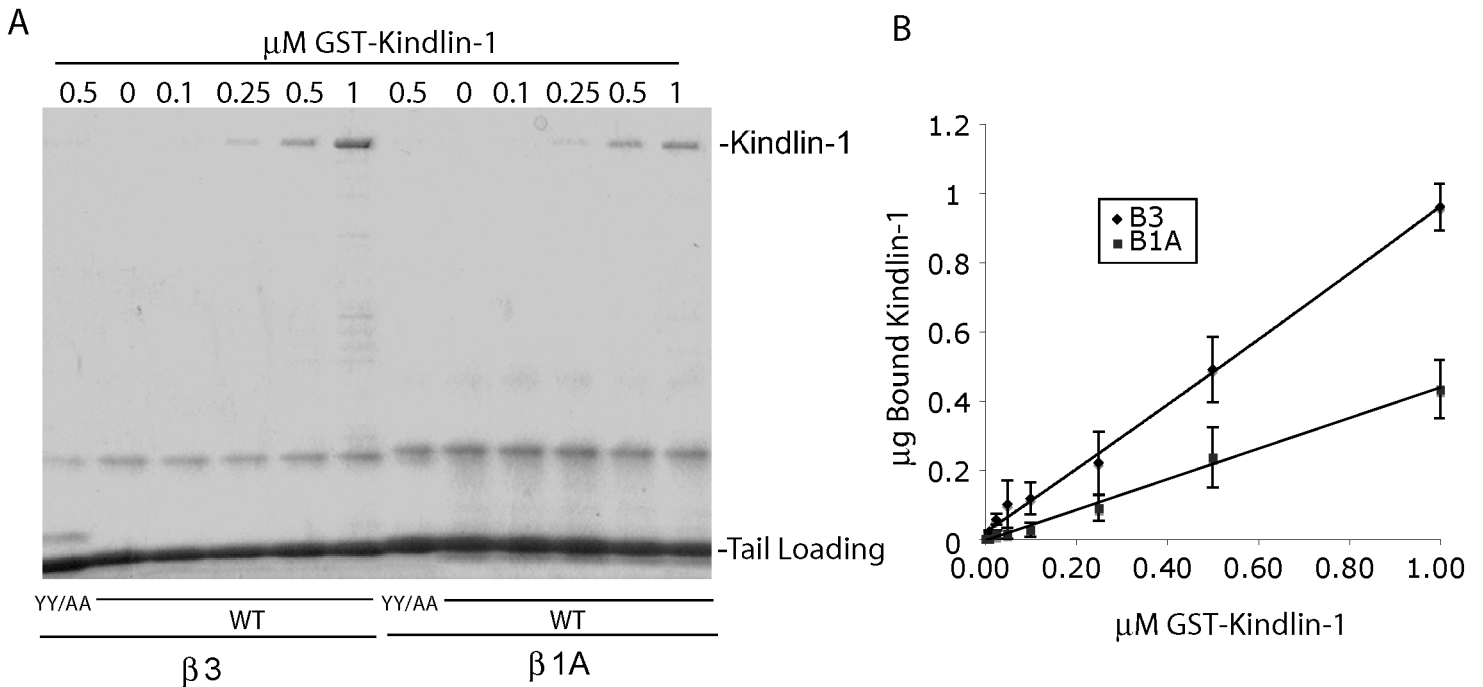
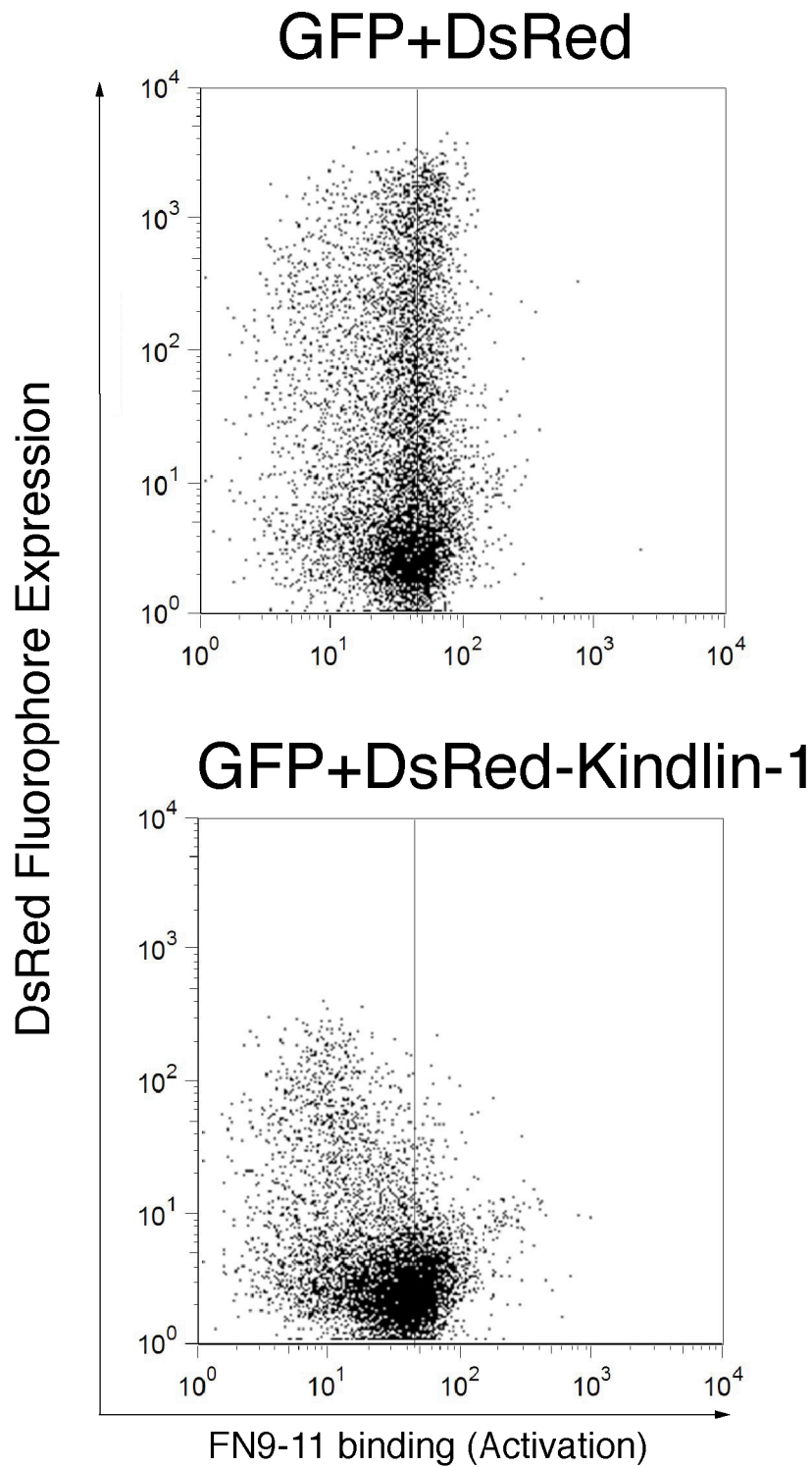


# Supplemental Figure 1.



**Supplemental Figure 1.** Kindlin-1 binds to integrin  $\beta 3$  and  $\beta 1A$  tails. (A)  $\beta 3$  and  $\beta 1A$  tail pull-down assays incorporating increasing concentrations of GST-tagged kindlin-1. (B) Analysis of quantification by densitometry of GST-kindlin-1 binding to  $\beta 3$  and  $\beta 1A$  (mean  $\pm$  SE,  $n=3$ ).

## Supplemental Figure 2.



**Supplemental Figure 2** . Kindlin-1 expression induces a concentration dependent inhibition of  $\alpha 5\beta 1$  activation. Representative dot-plot panels of FN9-11 binding to active  $\alpha 5\beta 1$  integrin from DsRed and DsRed-kindlin-1 transfected CHO cells. Cells were transfected with either DsRed-empty vector or DsRed-kindlin-1 cDNAs. 24 hours post transfection cells were detached and FN9-11 binding was carried out as described in Methods.