

Figure W1. RCAS/*tv-a* system allows generation of tumors in different locations of adult *Ntv-a* mice by overexpressing PDGFB. (A) Kaplan-Meier survival curve of mice injected with PDGF in different locations of *Ntv-a Ink4a-Arf*^{-/-} mice demonstrated a tumorigenic advantage of the SVZ and the right hemisphere *versus* the cerebellum. Statistical analysis was performed to compare all the groups to the cerebellar group. Statistical significance is represented by star. Statistical analysis shows significant advantage of the right hemisphere and SVZ compared with the cerebellum (**). (B) Table showing the number of mice injected and tumor incidence (%) by PDGFB overexpression in *Ntv-a Ink4a-Arf*^{-/-} background.

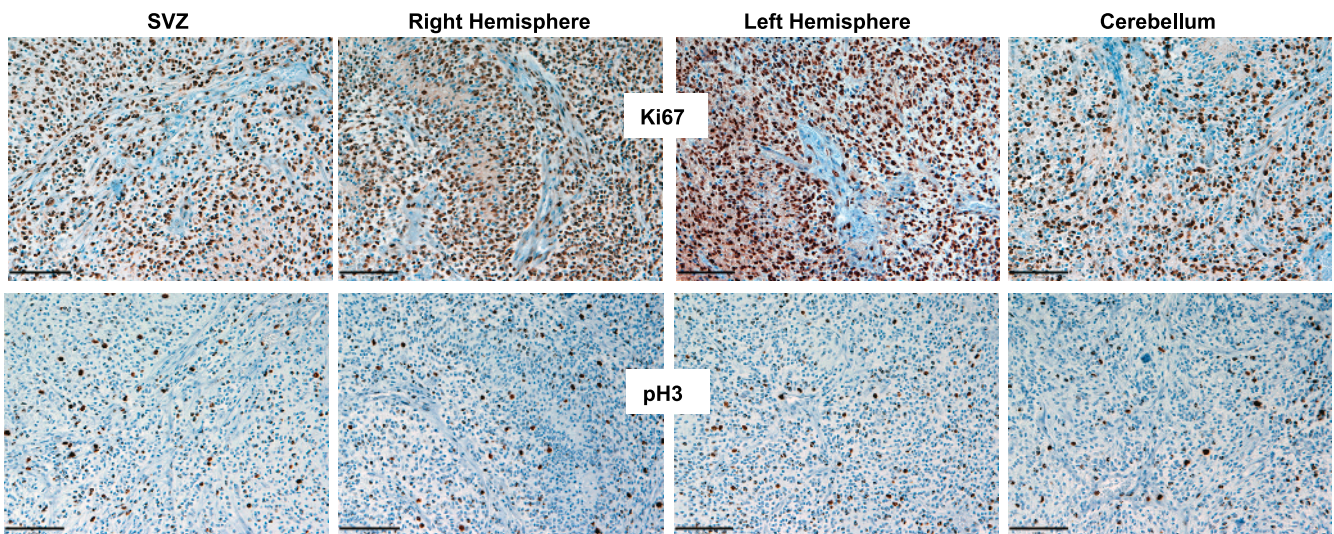


Figure W2. Tumors generated in different locations of adult *Ntv-a* mice overexpressing PDGFB in combination with *PTEN* loss show similar proliferative ability. Representative images of immunostaining for Ki67 and pH3 (Ser10) show similar level of positive cells in tumors generated by injecting PDGF in different locations of the brain. Scale bars, 74 μ m.